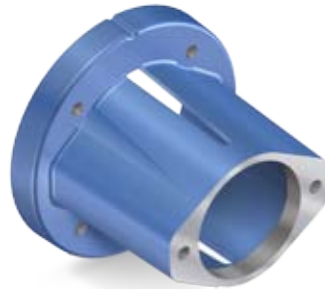


IEC MOTOR MOUNT

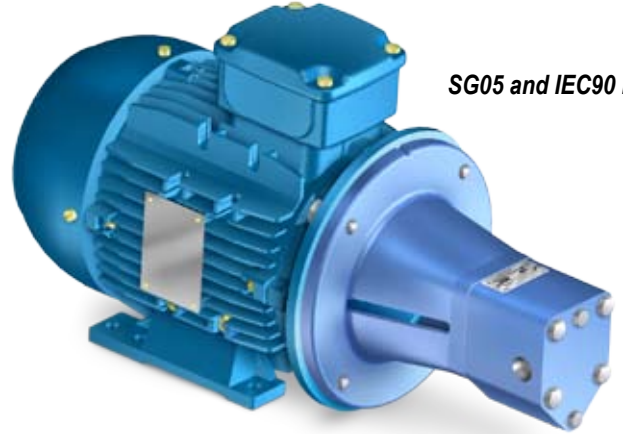
Spur Gear, LVP Vane & Motor Speed

Viking Pump's IEC (metric) motor brackets are used for running pumps at motor speed and provide the following advantages:

- Rigid, cast iron design
- Compact footprint
- Eliminates coupling guard
- Eliminates shaft alignment



**SG07 Bracket
for IEC 100-112 B14**



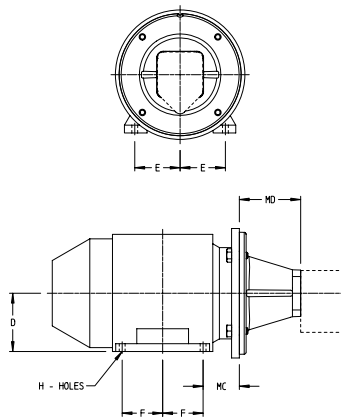
SG05 and IEC90 B5

motralec

4 rue Lavoisier . ZA Lavoisier . 95223 HERBLAY CEDEX
Tel. : 01.39.97.65.10 / Fax. : 01.39.97.68.48

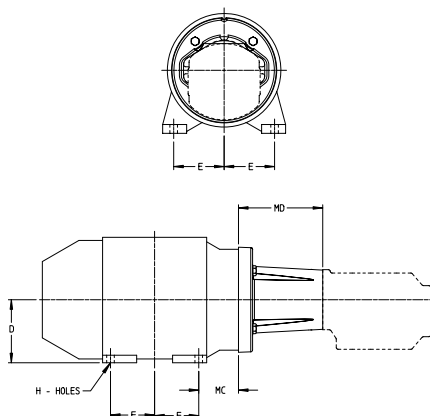
Demande de prix / e-mail : service-commercial@motralec.com

www.motralec.com



	MOTOR FRAME SIZE		D	E	F	H	MC	MD	Approx. drive weight (Lbs.) *
SG-04/05	IEC 80 B5 FLANGE	in	3.15	2.46	1.97	0.39	1.97	3.73	46
		mm	80	62.5	50	10	50	94.7	
SG-04/05	IEC 90 B5 FLANGE	in	3.54	2.76	S 1.97 / L 2.46	0.39	2.20	3.73	64
		mm	90	70	S 50 / L 62.5	10	56	94.7	

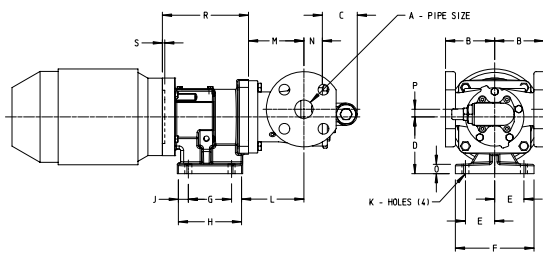
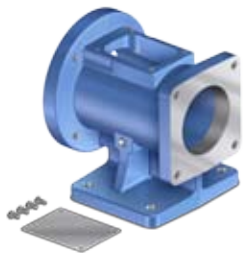
* Motor shipping weight listed is for a typical TEFC motor. (If a more accurate motor shipping weight is required, consult factory with complete motor specifications.)



	MOTOR FRAME SIZE		D	E	F	H	MC	MD	Approx. drive weight (Lbs.) *
SG-07	IEC 90 B5 FLANGE	in	3.54	2.76	S 1.97 / L 2.46	0.39	2.20	5.13	68
		mm	90	70	S 50 / L 62.5	10	56	130.3	
SG-07	IEC 100 B14 FACE	in	3.94	3.15	S 2.20 / L 2.76	0.47	2.48	5.26	114
		mm	100	80	S 56 / L 70	12	63	133.6	
SG-07	IEC 112 B14 FACE	in	4.41	3.74	S 2.24 / L 2.76	0.47	2.76	5.26	129
		mm	112	95	S 57 / L 70	12	70	133.6	

* Motor shipping weight listed is for a typical TEFC motor. (If a more accurate motor shipping weight is required, consult factory with complete motor specifications.)

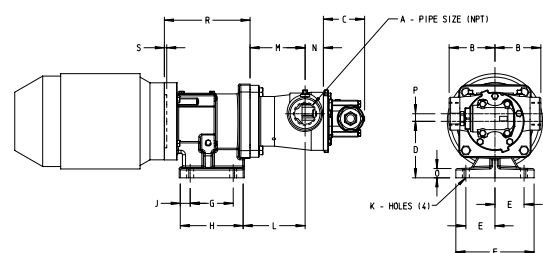
MODEL NO.		A	B	C	M	N	P	MOTOR FRAME	D	E	F	G	H	J	K	L	O	R	S
HJ493M HL493M	in	1.5	4.00	2.84	4.50	1.50	0.62	IEC 90	4.62	2.38	6.40	3.52	5.14	0.81	0.57	4.95	0.75	6.61	0.19
	mm	40	101.6	72.1	114.3	38.1	15.7	IEC 90	117.34	60.5	162.6	89.4	130.6	20.6	14.5	125.0	19.1	167.9	4.8
	in	1.5	4.00	2.84	4.50	1.50	0.62	IEC 100/112	4.62	2.38	6.40	3.52	5.14	0.81	0.57	4.98	0.75	7.01	0.19
	mm	40	101.6	72.1	114.3	38.1	15.7	IEC 100/112	117.34	60.5	162.6	89.4	130.6	20.6	14.5	128.8	19.1	178.1	4.8
	in	1.5	4.00	2.84	4.50	1.50	0.62	IEC 132	5.32	2.95	7.48	4.50	6.09	0.80	0.57	5.11	0.75	8.16	0.25
	mm	40	101.6	72.1	114.3	38.1	15.7	IEC 132	135.1	74.9	190.0	114.3	154.7	20.3	14.5	129.8	19.1	207.3	6.4



NOTES:

- Brackets are designed for IEC motors with a B14 mounting face.
- Jaw type coupling with straight jaws recommended to facilitate assembly of motor and pump to brackets.
- Coupling is guarded with a plate over the opening in the top of the bracket.

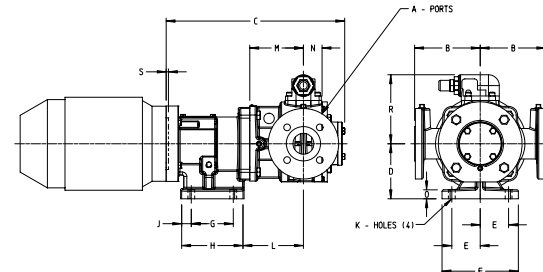
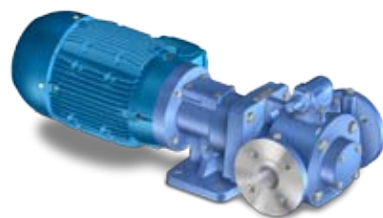
MODEL NO.		A	B	C	M	N	P	MOTOR FRAME	D	E	F	G	H	J	K	L	O	R	S
HJ495M HL495M	in	1.5	3.75	3.28	4.50	1.50	0.62	IEC 90	4.62	2.38	6.40	3.52	5.14	0.81	0.57	4.92	0.75	6.61	0.19
	mm	40	95.3	83.3	114.3	38.1	15.7	IEC 90	117.34	60.5	162.6	89.4	130.6	20.6	14.5	125.0	19.1	167.9	4.8
	in	1.5	3.75	3.28	4.50	1.50	0.62	IEC 100/112	4.62	2.38	6.40	3.52	5.14	0.81	0.57	5.07	0.75	7.01	0.19
	mm	40	95.3	83.3	114.3	38.1	15.7	IEC 100/112	117.34	60.5	162.6	89.4	130.6	20.6	14.5	128.8	19.1	178.1	4.8
	in	1.5	3.75	3.28	4.50	1.50	0.62	IEC 132	5.32	2.95	7.48	4.50	6.09	0.80	0.57	5.11	0.75	8.16	0.25
	mm	40	95.3	83.3	114.3	38.1	15.7	IEC 132	135.1	74.9	190.0	114.3	154.7	20.3	14.5	129.8	19.1	207.3	6.4



NOTES:

- Brackets are designed for IEC motors with a B14 mounting face.
- Jaw type coupling with straight jaws recommended to facilitate assembly of motor and pump to brackets.
- Coupling is guarded with a plate over the opening in the top of the bracket.

MODEL NO.		A	B	M	N	R	MOTOR FRAME	C	D	E	F	G	H	J	K	L	O	S
LVP40017-M LVP40027-M	in	1.5	5.50	4.50	1.56	5.79	IEC 90	14.57	4.62	2.38	6.40	3.52	5.14	0.81	0.57	4.83	0.75	0.19
	mm	40	139.7	114.3	39.6	147.1	IEC 90	370.08	117.34	60.5	162.6	89.4	130.6	20.6	14.5	122.68	19.1	4.8
	in	1.5	5.50	4.50	1.56	5.79	IEC 100/112	14.97	4.62	2.38	6.40	3.52	5.14	0.81	0.57	4.98	0.75	0.19
	mm	40	139.7	114.3	39.6	147.1	IEC 100/112	380.24	117.34	60.5	162.6	89.4	130.6	20.6	14.5	126.5	19.1	4.8
	in	1.5	5.50	4.50	1.56	5.79	IEC 132	16.12	5.32	2.95	7.48	4.50	6.09	0.80	0.57	5.00	0.75	0.25
	mm	40	139.7	114.3	39.6	147.1	IEC 132	409.4	135.1	74.9	190.0	114.3	154.7	20.3	14.5	127.0	19.1	6.4



NOTES:

- Brackets are designed for IEC motors with a B14 mounting face.
- Jaw type coupling with straight jaws recommended to facilitate assembly of motor and pump to brackets.
- Coupling is guarded with a plate over the opening in the top of the bracket.

motralec

4 rue Lavoisier . ZA Lavoisier . 95223 HERBLAY CEDEX
 Tel. : 01.39.97.65.10 / Fax. : 01.39.97.68.48
 Demande de prix / e-mail : service-commercial@motralec.com

www.motralec.com