

# TRAVAINI PUMPS USA

## TRHE 32

### Two Stage High Vacuum Pump

PERFORMANCE DATA	: From 25 Torr	CAPACITY:	8 – 35 cfm
FEATURES	: Two-stage rotating pump with externally located bearings grease lubricated.		
SHAFT SEALING	: Mechanical seal - Double mechanical seal.		
OPTIONS	: Bareshaft pump - Coupled to electric motor on baseplate – Monoblock with electric motor		



TECHNICAL DATA				
PUMP TYPE		TRHE 32-20	TRHE 32-45	TRHE 32-60
Speed	RPM	3500	3500	3500
Motor - installed power	HP	2	3	5
Average service liquid flow	GPM	1.5	1.5	3.5
Noise level at 60 Torr	dB(A)	69	69	69
Minimum suction pressure	Torr	30	30	25

Pumps are provided with threaded connections for service liquid, pump draining, anticavitation valve and companion flanges. Pumps are also provided, by request, with flanged air-liquid separator, tank, non return valve, ejector, vacuum relief valve, valve to control the flow of the liquid supply, vacuum gauges, pressure gauges and compound gauges. We can also provide information on our water sealed and oil sealed systems.

For more detailed information please contact our Sales Office.

Example for Model Designation	
<u>T R H E 32 – 45 / C - M / RZ</u>	
<b>T</b>	Travaini Pump USA construction
<b>R</b>	Liquid Ring Pump
<b>H</b>	Single impeller pump with valves for high vacuum
<b>E</b>	Design number
<b>32</b>	Flange size (mm)
<b>45</b>	Nominal capacity (m <sup>3</sup> /h)
<b>C</b>	Shaft sealing C = Mechanical seal C2 = Double mechanical seal
<b>M</b>	Closed-coupled construction with lantern (by request)
<b>RZ</b>	Materials of construction RZ-RA-A3 = See table

Standard Materials of Construction				
Part No.	Description	RZ	RA	A3
106	Suction casing	Cast Iron		
107	Discharge casing			
140	Port Plate			
210	Shaft	Stainless Steel AISI 420	Stainless Steel AISI 316	
147	Manifold	Steel		
357	Bearing housing mech. seal	Cast Iron		
230	Impeller	Stainless Steel AISI 316		

Special Materials Available Upon Request

Indicative table: for further information please consult our Sales Office

**motralec**

4 rue Lavoisier . ZA Lavoisier . 95223 HERBLAY CEDEX

Tel. : 01.39.97.65.10 / Fax. : 01.39.97.68.48

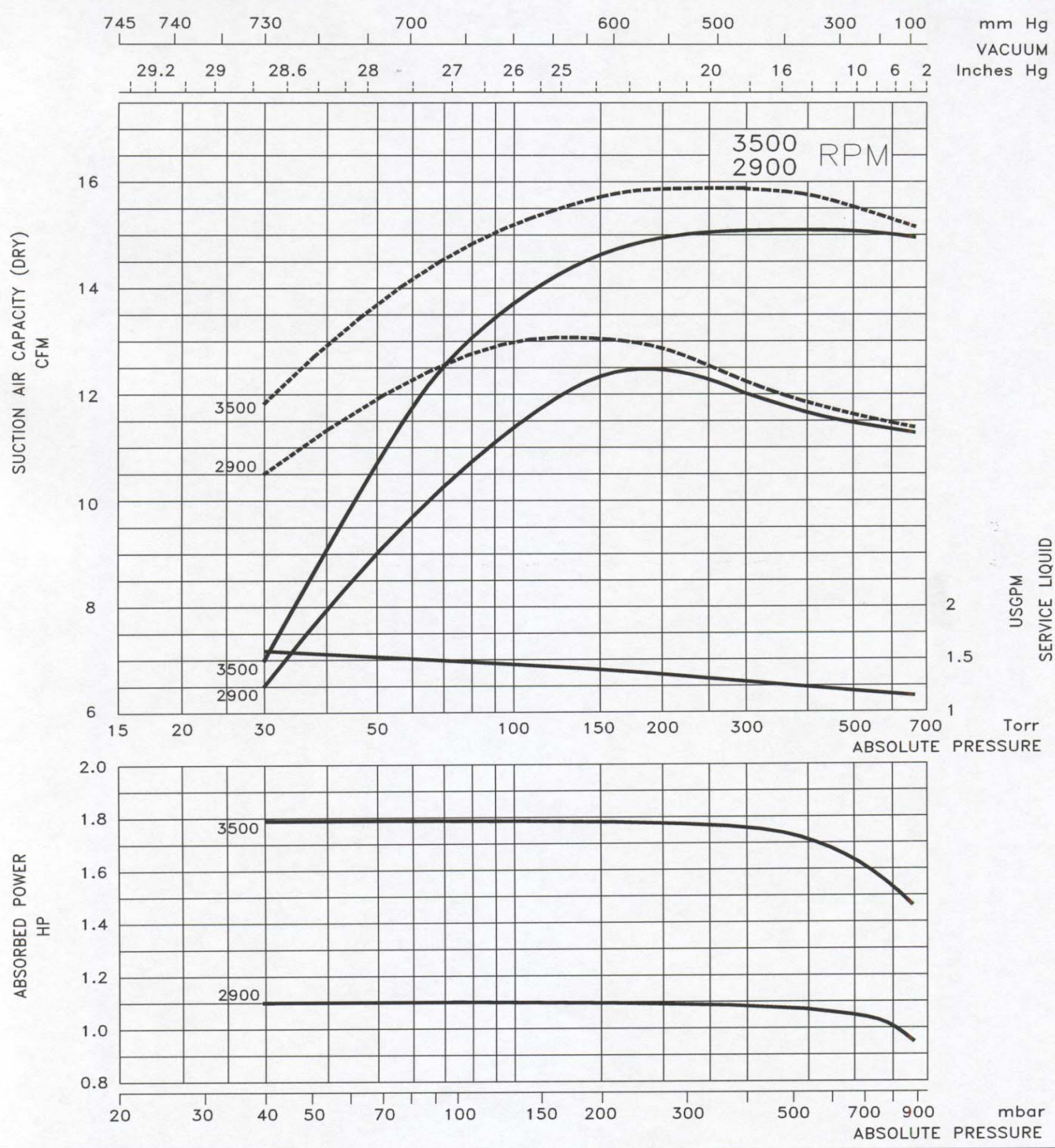
Demande de prix / e-mail : service-commercial@motralec.com

[www.motralec.com](http://www.motralec.com)

DATA BASED ON :  
 DRY AIR AT 68 °F - 20 °C  
 SATURATED AIR AT 68 °F - 20 °C  
 SERVICE LIQUID WATER  
 SERVICE LIQUID TEMPERATURE 59 °F - 15 °C  
 DISCHARGE PRESSURE 1013 mbar

S.S. PUMPS  
 CAPACITY : -10%  
 Tol.: 10%

PERFORMANCE DATA  
 LIQUID RING VACUUM PUMP  
 PUMP MODEL  
**TRHE 32-20**



DATE: APRIL 97

PAGE NO: 4-113



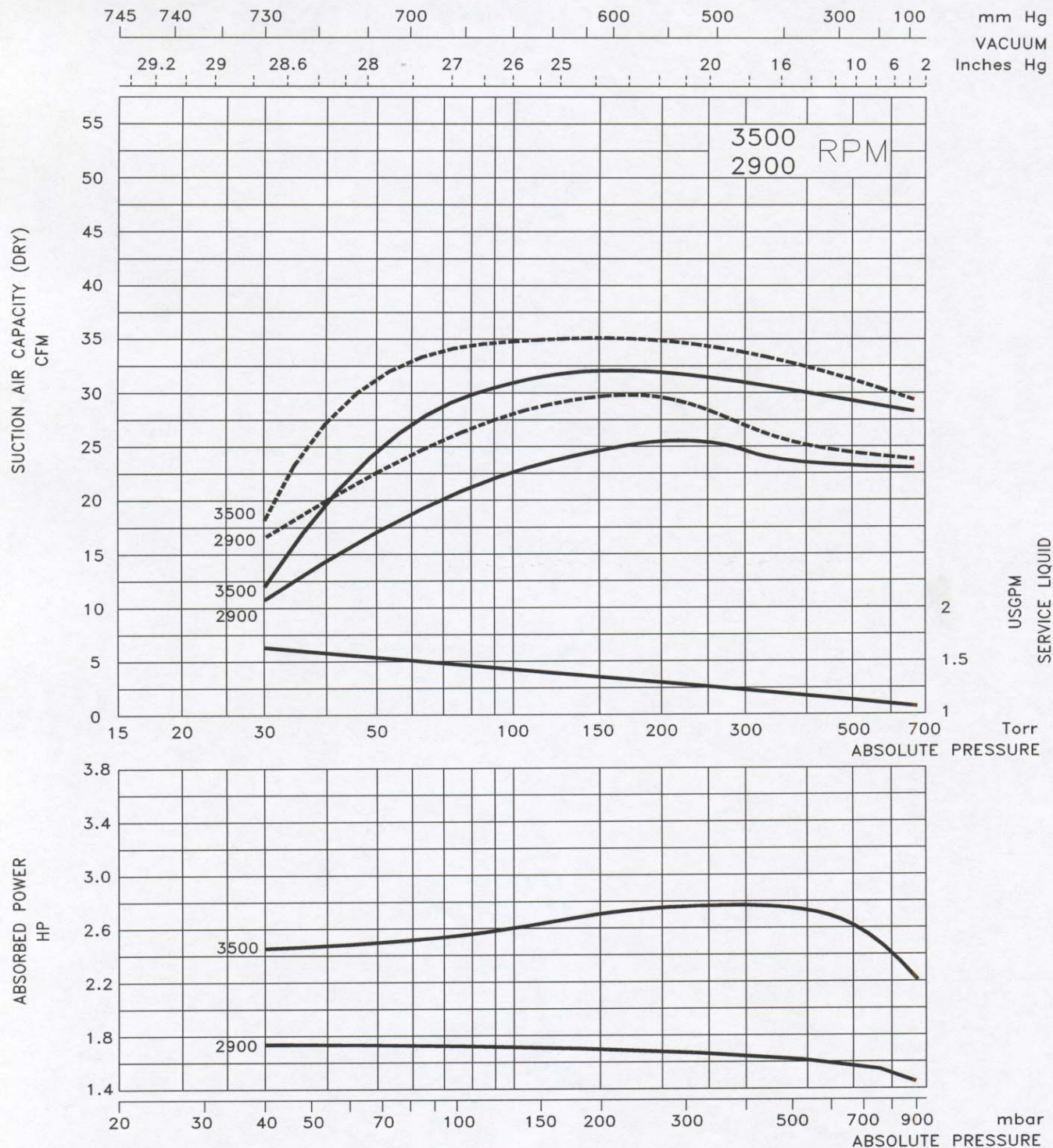
DATA BASED ON :  
 DRY AIR AT 68 °F - 20 °C  
 SATURATED AIR AT 68 °F - 20 °C  
 SERVICE LIQUID WATER  
 SERVICE LIQUID TEMPERATURE 59 °F - 15 °C  
 DISCHARGE PRESSURE 1013 mbar

S.S. PUMPS  
 CAPACITY : -10%

Tol.: 10%

PERFORMANCE DATA  
 LIQUID RING VACUUM PUMP  
 PUMP MODEL

**TRHE 32-45**

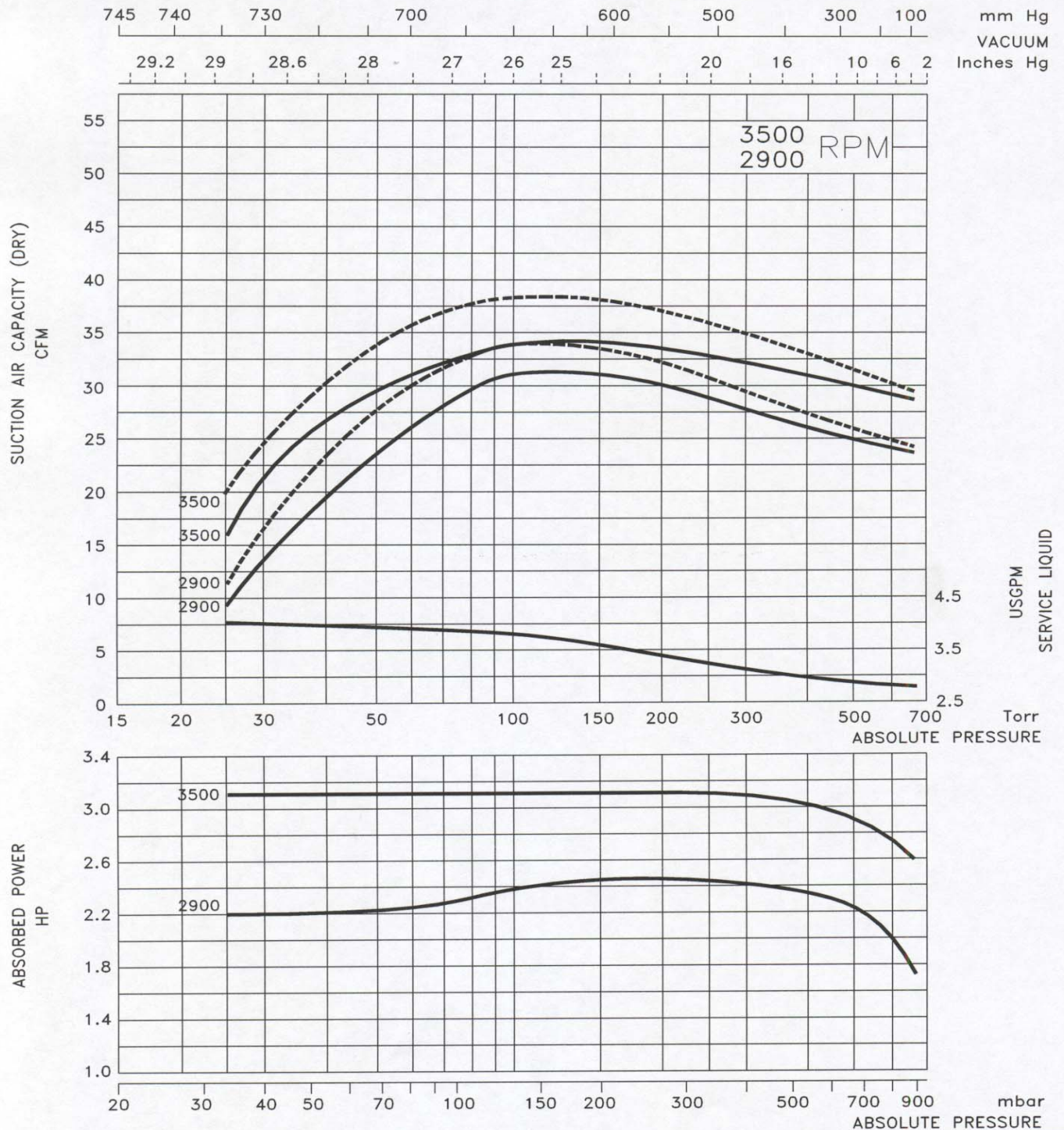


DATA BASED ON :  
 DRY AIR AT 68 °F - 20 °C  
 SATURATED AIR AT 68 °F - 20 °C  
 SERVICE LIQUID  
 SERVICE LIQUID TEMPERATURE 59 °F - 15 °C  
 DISCHARGE PRESSURE 1013 mbar

S.S. PUMPS  
 CAPACITY : -10%

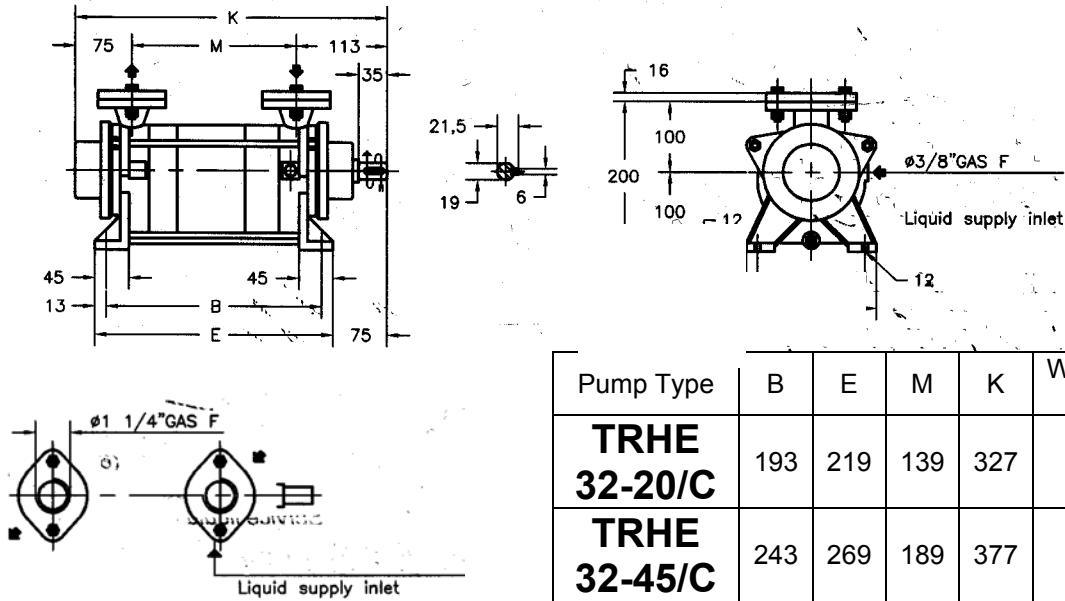
Tol.: 10%

PERFORMANCE DATA  
 LIQUID RING VACUUM PUMP  
 PUMP MODEL  
**TRHE 32-60**



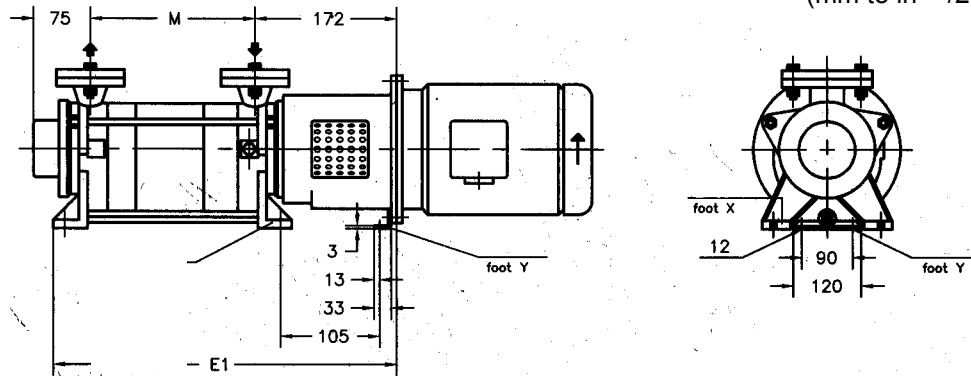
# TRHE 32 - 20/C, 45/C

## Bareshaft Construction with Mechanical Seal

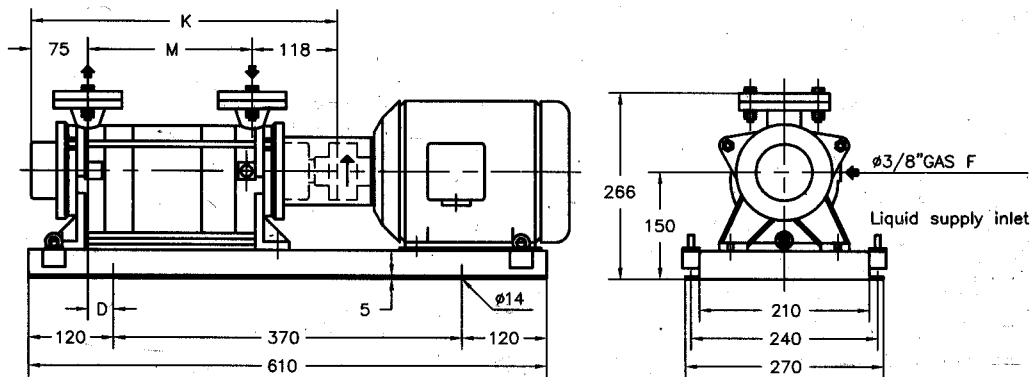


## Closed-Coupled Construction with Mechanical Seal

Note: Dimensions in mm.  
(mm to in = /25.4)



## Base-Mounted Construction (Baseplate-Coupling) with Mechanical Seal



Pump Type	2 Poles Motor HP	Base- plate	Pump				Weight <sup>1</sup> lbs	Weight <sup>2</sup> lbs
			D	K	L	N		
TRHE 32-20/C	2	902	45	332	139	351	50	75
	2		75	382	189	401	56	81
TRHE 32-50/C	3							

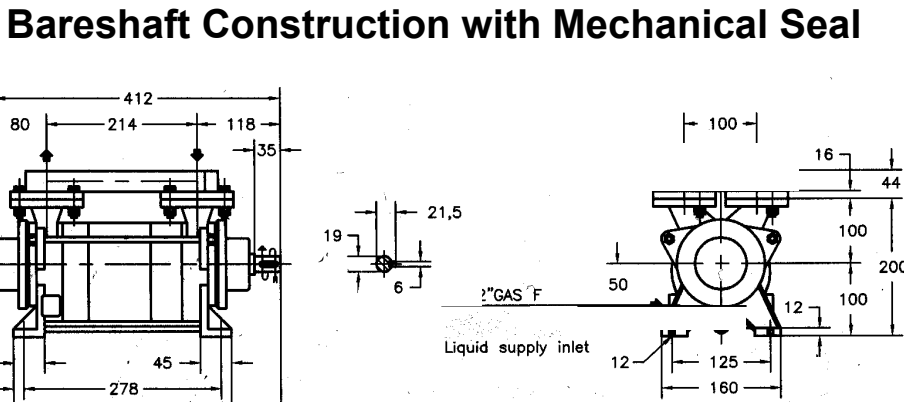
1 Weight without motor (closed-coupled)  
2 Weight without motor (baseplate-coupling)

Dimensions for reference only  
Please consult factory for

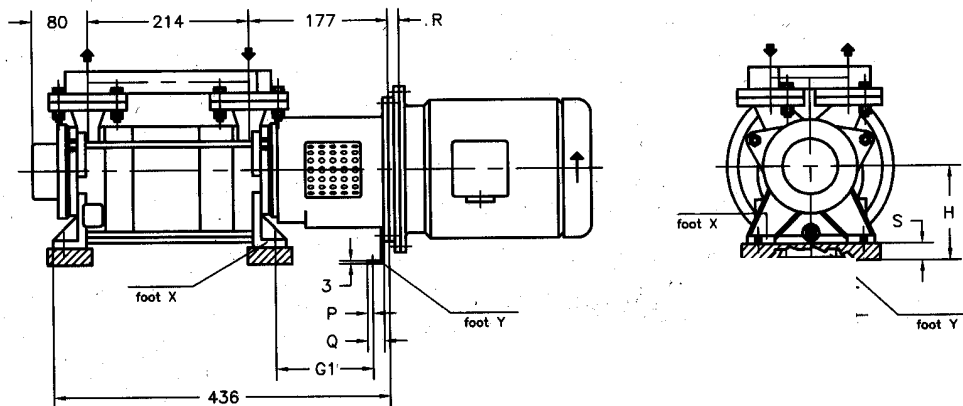
The weights refer to GH construction



**TRHE 32 - 60/C**

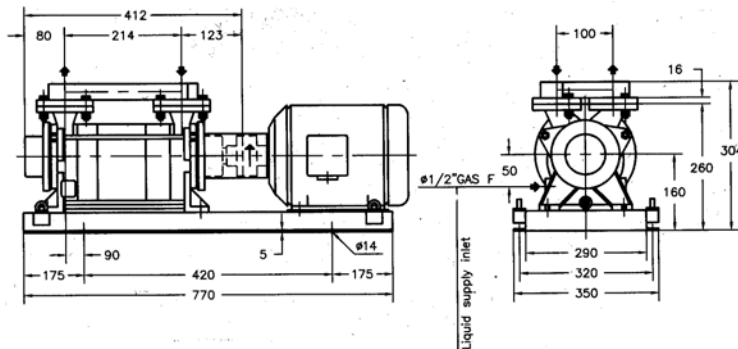


## Closed-Coupled Construction with Mechanical Seal



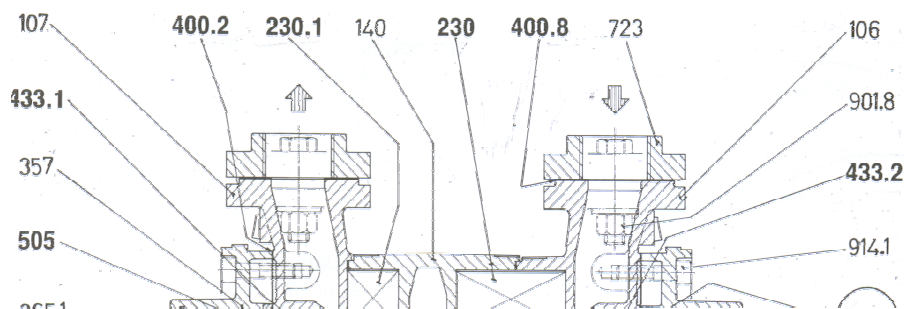
2 Poles Motor HP	Pump									Weight <sup>1</sup> lbs.
	G1	H	P	Q	R	S	T	U	V	
3	114	100	13	33	-	-	90	120	12	68
5	101	125	20	44	25	25	110	140	14	77

## Base-Mounted Construction (Baseplate-Coupling) with Mechanical Seal



2 Poles Motor HP	Base- plate	Weight <sup>1</sup> lbs.
3	901	95
5		

## Typical Cross Section



**motralec**

4 rue Lavoisier . ZA Lavoisier . 95223 HERBLAY CEDEX

Tel. : 01.39.97.65.10 / Fax. : 01.39.97.68.48

Demande de prix / e-mail : [service-commercial@motralec.com](mailto:service-commercial@motralec.com)

[www.motralec.com](http://www.motralec.com)