

VACUSYSTEM

MINI COLLECTION AND PUMPING STATIONS FOR WASTE WATER

The VACUSYSTEM 85 are pre-assembled ready-for-use automatic pumping stations, designed for the disposal of domestic waste water in houses and small blocks of flats. Particularly suitable when the water from skin drains, baths, washing machines (excluding that of WCs) etc. is collected at a lower level than the main sewer. The standard pumping station consists of DRENOX submersible pump.



Electric pump motor

- Dry motor
- Single phase power supply with capacitor permanently activated and thermal protection built into the motor winding
- Level of protection IP68
- Class F insulation
- Speed of rotation 2850 rpm
- Completely insulated cable connection chamber
- 10 m H07 RN-F power supply cable with plug

Usage limitations

- Type of liquid: partially effluent and dirty clear water, with suspended solids of a maximum dimension of 6 mm, non-aggressive liquids
- Maximum liquid temperature 40°C

Design features

- The standard pumping station consists of:
 - **Tank**
In polyethylene with a capacity of 85 litres with corrosion and wear resistant sand filter bowl and grid. Three possible types of 40 Ø pipe inlet.
 - Flexible pipe 1 1/4" helically wound complete with a sleeve for the connection of the delivery pipe for both right-hand and left-hand connection
 - Non return valve
 - **Plug**
with built in thermal protection and switch for manual/automatic operation.
 - DRENOX automatic submersible pump

motralec

4 rue Lavoisier . ZA Lavoisier . 95223 HERBLAY CEDEX
Tel. : 01.39.97.65.10 / Fax. : 01.39.97.68.48

Demande de prix / e-mail : service-commercial@motralec.com

www.motralec.com

Accessories (only on request)

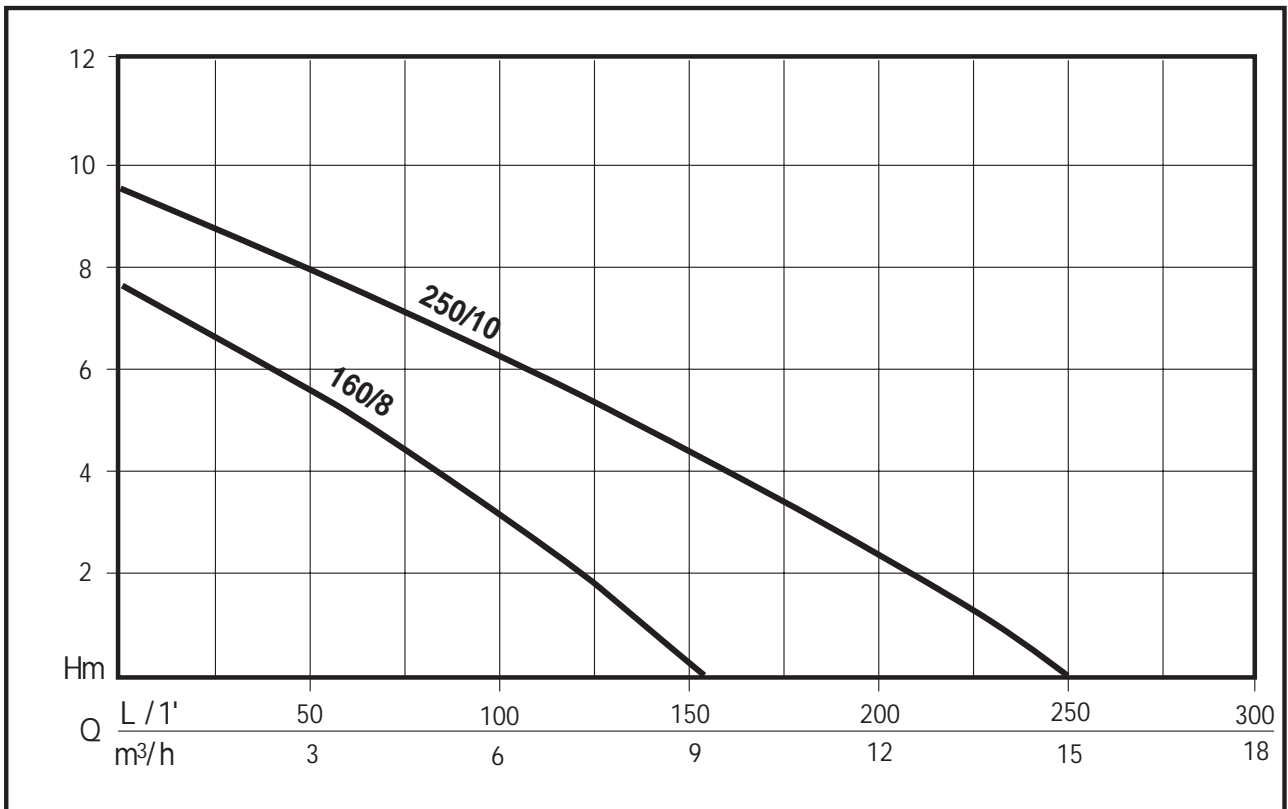
- Sealing lid to be fitted in place of the grid (Art. ZA008290)



DRENOX DESIGN FEATURES

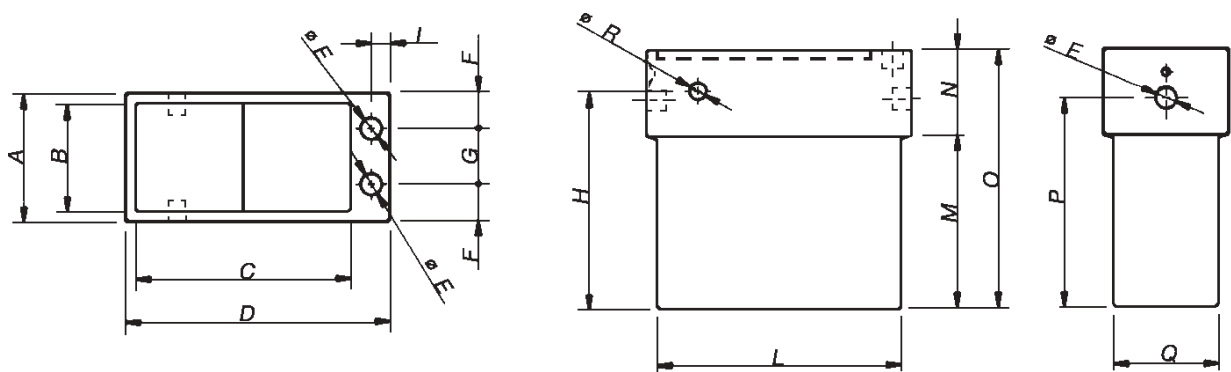
Component	Material
Pump body	X 5 CrNi 1810 (AISI 304) Stainless steel
Suction grid	X 5 CrNi 1810 (AISI 304) Stainless steel
Impeller	X 5 CrNi 1810 (AISI 304) Cast stainless steel
Power cable	10 m H07 RN-F with plug
Motor shaft	Stainless steel seal with a ceramic facing at the points of seal wear
Seal	Fixed double NBR 70 rubber seal with special V-ring sand guard.

TABLE OF HYDRAULIC PERFORMANCE



PUMP PERFORMANCE

CODE	MODEL	Nominal power		Absorbed power		VOLTAGE	Amp.	μF.	Q	Discharge head in meters					
		HP	kW	HP	kW					L/1'	10	40	60	80	120
N2141000	VS 85-D 160	0,5	0,37	0,6	0,45	1 - 220 + 240 V	2,2	8	7	5,8	5	4,1	2,2		
N2141010	VS 85-D 250	0,75	0,55	1,2	0,9	1 - 220 + 240 V	4,5	10	9,4	8,5	7,6	7,2	5,1	4,1	



DIMENSIONS AND WEIGHTS

Model	Dimensions mm.																Weight kg
	A	B	C	D	E	F	G	H	I	L	M	N	O	P	Q	R	
VS 85-D 160	300	250	503	620	50	85	130	505	45	570	400	200	600	485	250	40	21,4
VS 85-D 250	300	250	503	620	50	85	130	505	45	570	400	200	600	485	250	40	22,5

VACUSYSTEM

COLLECTION AND PUMPING STATIONS FOR DIRTY WATER

The VACUSYSTEM 200 are pre-assembled ready-for-use automatic pumping stations. Particularly suitable when the water from drains is collected at a lower level than the main sewer.
The standard pumping station consists of PRIOX submersible pump.



Electric pump motor

- Dry motor
- Level of protection IP68
- Class F insulation
- Single phase power supply with capacitor permanently activated and thermal protection built into the motor winding
- Completely insulated cable connection chamber
- Speed of rotation 2850 rpm
- Self lubricating ball bearings

Usage limitations

- Type of liquid: water with suspended solids of a maximum dimension of 40 mm
- Maximum liquid temperature 40°C
- Minimum drainage level 60 mm

Design features

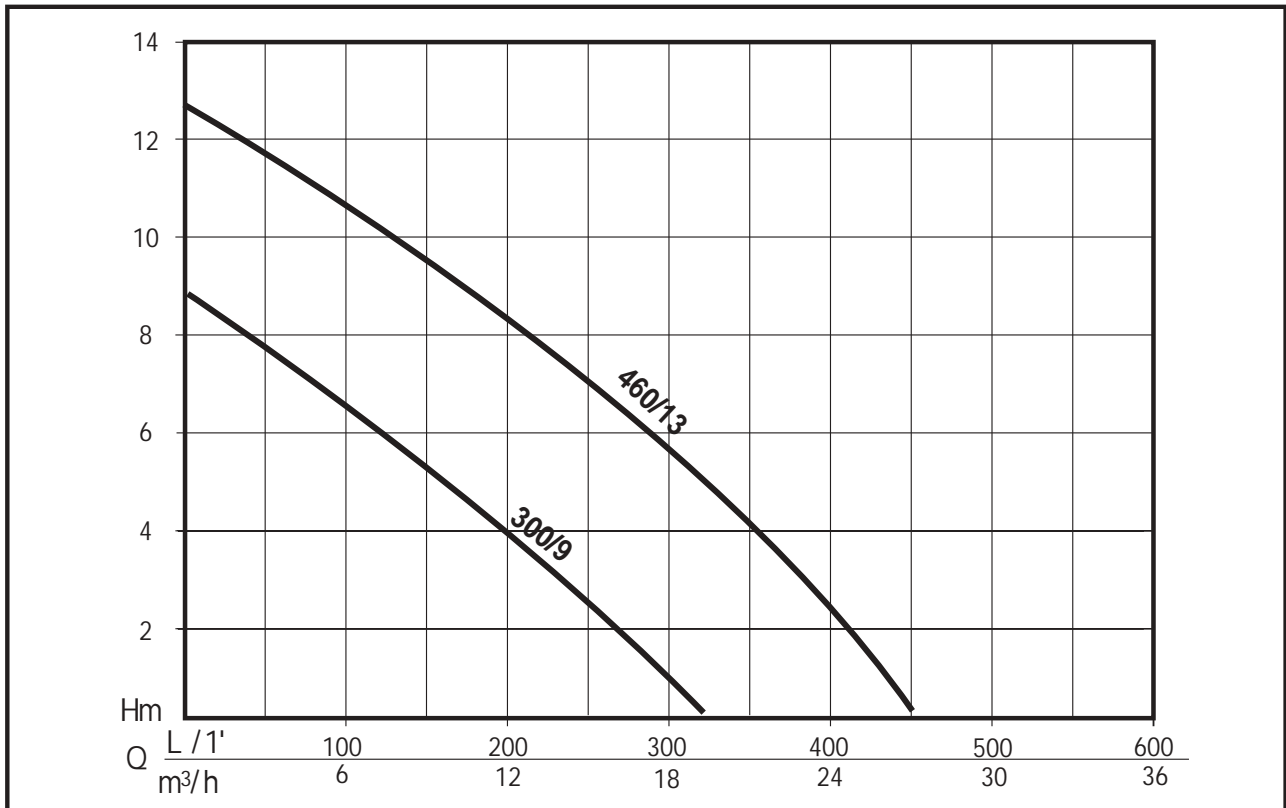
The standard pumping station consists of:

- **Tank**
in polyethylene with a capacity of 175 l.
The closing lid is supplied with O-ring.
It warrants liquid seal and possible gas locks.
- DN 110 inlet, 2" outlet and DN 50 vent connection
- **Plug**
With thermal protection and test-push button
- PRIOX 300/9 AUT, PRIOX 460/13 M AUT submersible pump

PRIOX DESIGN FEATURES

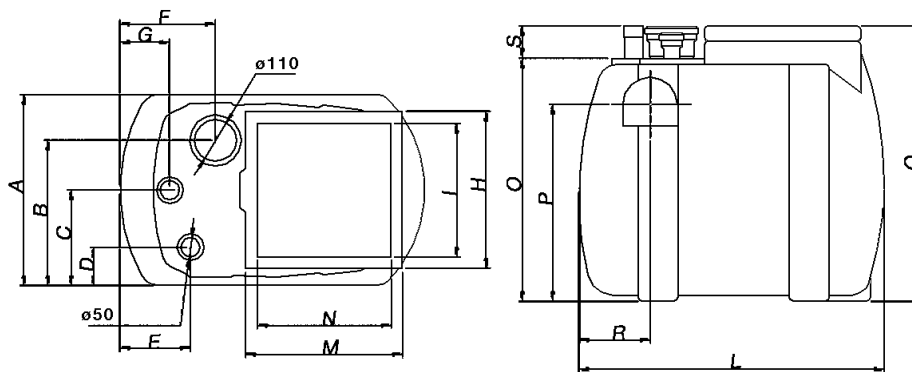
Component	Material	
Pump casing	X 5 CrNi 1810 (AISI 304) Stainless steel	
Suction base	X 5 CrNi 1810 (AISI 304) Stainless steel	
Impeller	X 5 CrNi 1810 (AISI 304) Cast stainless steel	
Power cable	10 m H07 RN-F	
Motor shaft	X 12 CrNi 1809 (AISI 416) Stainless steel	
Mechanical seal	Silicum carbide	Oil chamber for seal lubrication
Counterface	Silicum carbide	
Secondary seal	NBR rubber lip seal	
V-ring sand protection	NBR rubber	

TABLE OF HYDRAULIC PERFORMANCE



PUMP PERFORMANCE

CODE	MODEL	Nominal power		Absorbed power		VOLTAGE	Amp.	μF.	Q	Discharge head in meters							
		HP	kW	HP	kW					L/1'	50	100	150	200	250	300	400
									m³/h	3	6	9	12	15	18	24	
N2141140	VS 200 - P 300 M	0,8	0,6	1,2	0,9	1 - 230 V	4,1	12,5		7,7	6,4	5	3,8	2,3	1		
N2141150	VS 200 - P 460 M	1,4	1	2,2	1,6	1 - 230 V	7,2	20		11,8	10,8	9,8	8,5	7	5,5	2	



DIMENSIONS AND WEIGHTS

Model	Dimensions mm.																	Weight kg
	A	B	C	D	E	F	G	H	I	L	M	N	O	P	Q	R	S	
VS 200 - P 300 M	500	380	250	100	185	250	130	410	350	800	410	350	635	515	720	185	85	27
VS 200 - P 460 M	500	380	250	100	185	250	130	410	350	800	410	350	635	515	720	185	85	29,2

VACUSYSTEM

COLLECTION AND PUMPING STATIONS FOR DIRTY WATER

The VACUSYSTEM 200S are pre-assembled ready-for-use automatic pumping stations. Particularly suitable when the water from drains is collected at a lower level than the main sewer.
The standard pumping station consists of PRIOX submersible pump.

• CONNECTING FOOT



Electric pump motor

- Dry motor
- Level of protection IP68
- Class F insulation
- Single-phase power supply with capacitor permanently activated and thermal protection built into the motor winding
- Completely insulated cable connection chamber
- Self lubricating ball bearings
- Speed of rotation 2850 rpm

Usage limitations

- Type of liquid: water with suspended solids of a maximum dimension of 40 mm
- Maximum liquid temperature 40°C
- Minimum drainage level 60 mm

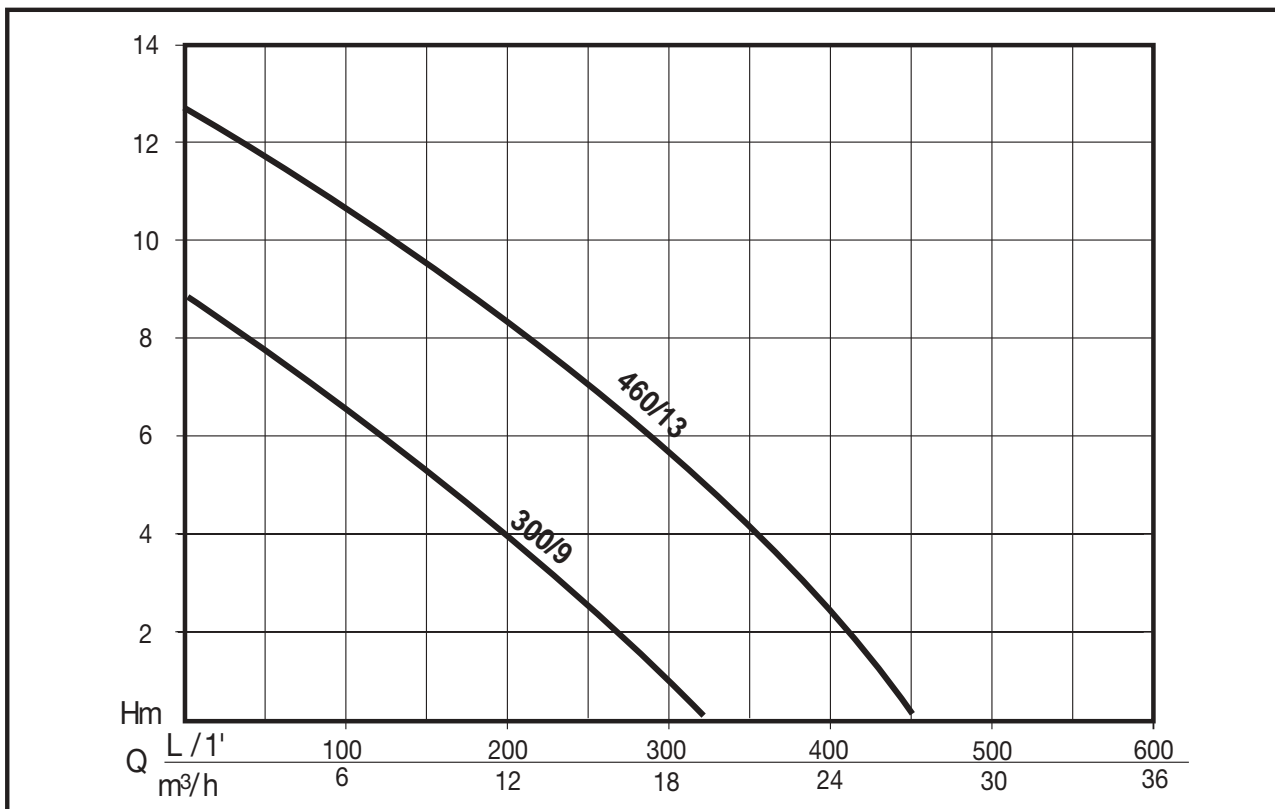
Design features

- The standard pumping station consists of:
 - **Tank**
in polyethylene with a capacity of 175 l.
The closing lid is supplied with O-ring.
It warrants liquid seal and possible gas locks.
 - DN 110 inlet, 2" outlet and DN 50 vent connection
 - **Connecting foot**
 - **Plug**
With thermal protection and test-push button (single-phase pumps)
 - **Electric panel**
for the control and protection of three-phase electric pumps.
 - **Float switch**
with 10 m of 3 x 1 H07 RN-F cable (for three-phase pumps)
 - **PRIOX Submersible Pump**
Models:
 - PrioX 300/9 M AUT, PrioX 300/9 T
 - PrioX 460/13 M AUT, PrioX 460/13 T

PRIOX DESIGN FEATURES

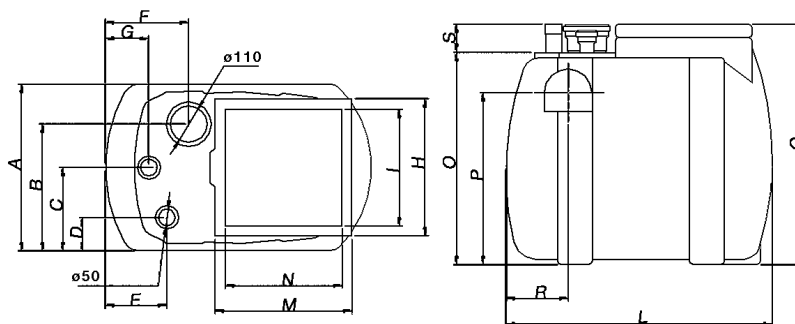
Component	Material	
Pump casing	X 5 CrNi 1810 (AISI 304) Stainless steel	
Suction base	X 5 CrNi 1810 (AISI 304) Stainless steel	
Impeller	X 5 CrNi 1810 (AISI 304) Cast stainless steel	
Power cable	10 m H07 RN-F	
Motor shaft	X 12 CrNi 1809 (AISI 416) Stainless steel	
Mechanical seal	Silicium carbide	Oil chamber for seal lubrication
Counterface	Silicium carbide	
Secondary seal	NBR rubber lip seal	
V-ring sand protection	NBR rubber	

TABLE OF HYDRAULIC PERFORMANCE



PUMP PERFORMANCE

CODE	MODEL	Nominal power		Absorbed power		VOLTAGE	Amp.	μF.	Q	Discharge head in meters								
		HP	kW	HP	kW					L/1'	50	100	150	200	250	300	400	
									m³/h	3	6	9	12	15	18	24		
N2141160	VS 200 S - P 300 M	0,8	0,6	1,2	0,9	1 ~ 230 V	4,1	12,5	Discharge head in meters	7,7	6,4	5	3,8	2,3	1			
N2141170	VS 200 S - P 300 T	0,8	0,6	1,2	0,9	3 ~ 400 V	1,55			11,8	10,8	9,8	8,5	7	5,5	2		
N2141180	VS 200 S - P 460 M	1,4	1	2,2	1,6	1 ~ 230 V	7,2	20										
N2141190	VS 200 S - P 460 T	1,4	1	2	1,45	3 ~ 400 V	2,4											



DIMENSIONS AND WEIGHTS

Model	Dimensions mm.																	Weight kg
	A	B	C	D	E	F	G	H	I	L	M	N	O	P	Q	R	S	
VS 200 S - P 300 M	500	380	250	100	185	250	130	410	350	800	410	350	635	515	720	185	85	37
VS 200 S - P 300 T	500	380	250	100	185	250	130	410	350	800	410	350	635	515	720	185	85	39
VS 200 S - P 460 M	500	380	250	100	185	250	130	410	350	800	410	350	635	515	720	185	85	38,8
VS 200 S - P 460 T	500	380	250	100	185	250	130	410	350	800	410	350	635	515	720	185	85	40,6

VACUSYSTEM

COLLECTION AND PUMPING STATIONS FOR DIRTY WATER

The VACUSYSTEM 500 are pre-assembled ready-for-use automatic pumping stations. Particularly suitable when the water from drains is collected at a lower level than the main sewer.

The standard pumping station consists of PRIOX submersible pump.

- 2 SUBMERSIBLE PUMPS
- 2 CONNECTING FEET
- ELECTRIC PANEL FOR CONTROL AND PROTECTION



Motor

- Dry motor
- Level of protection IP68
- Class F insulation
- Single-phase power supply with capacitor permanently activated and thermal protection built into the motor winding
- Completely insulated cable connection chamber
- Speed of rotation 2850 rpm
- Self lubricating ball bearings

Usage limitations

- Type of liquid: water with suspended solids of a maximum dimension of 40 mm
- Maximum liquid temperature 40°C
- Minimum drainage level 60 mm

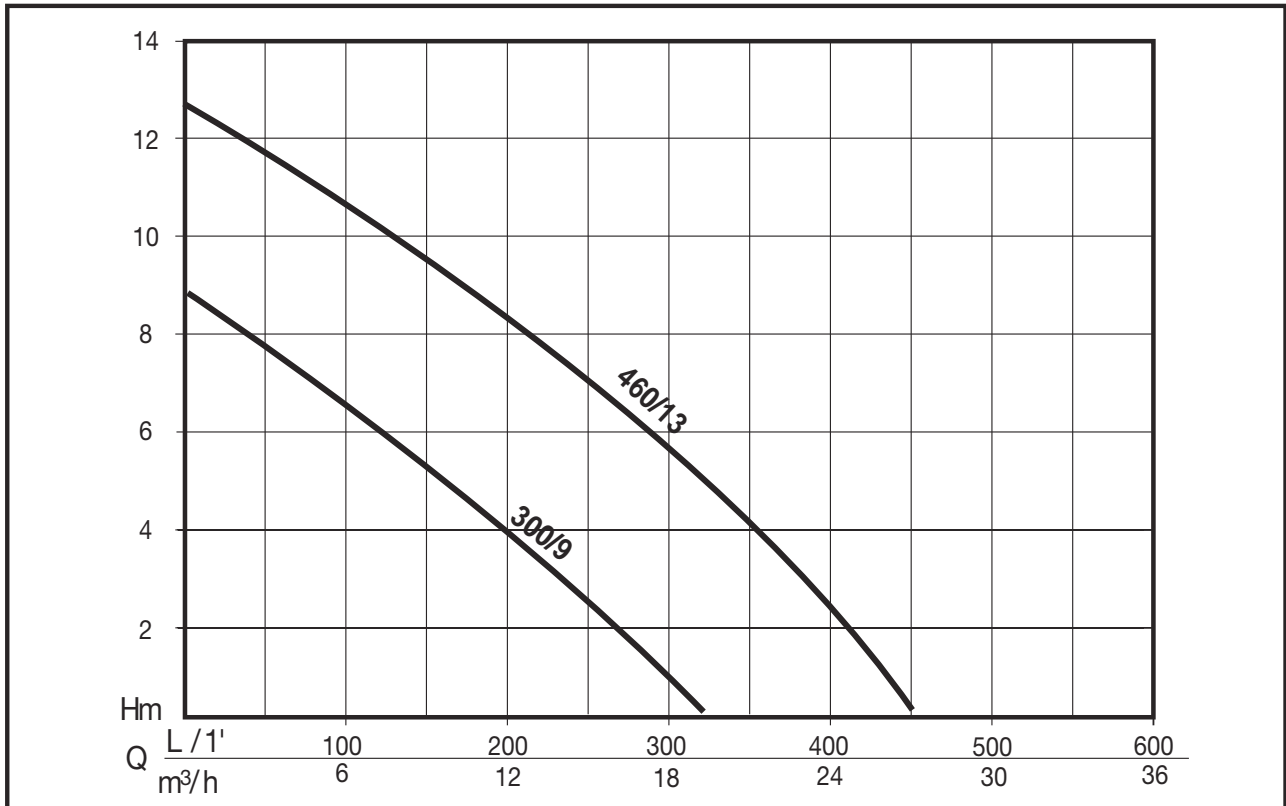
Design features

- The standard pumping station consists of:
 - **Tank**
In polyethylene with a capacity of 550 l.
The closing lid is supplied with O-ring.
It warrants liquid seal and possible gas locks.
 - Two DN 110 inlet, two 2" outlet and DN 50 vent connection
 - **Two connecting feet**
 - **Electric panel**
for the control and protection of 2 single phase or three phase electric pumps
 - **Two float switches**
with 10 m of 3 x 1 H07 RN-F cable
 - **Pair of PRIOX Submersible Pumps**
Models:
- Priox 300/9 M, Priox 300/9 T
- Priox 460/13 M, Priox 460/13 T

PRIOX DESIGN FEATURES

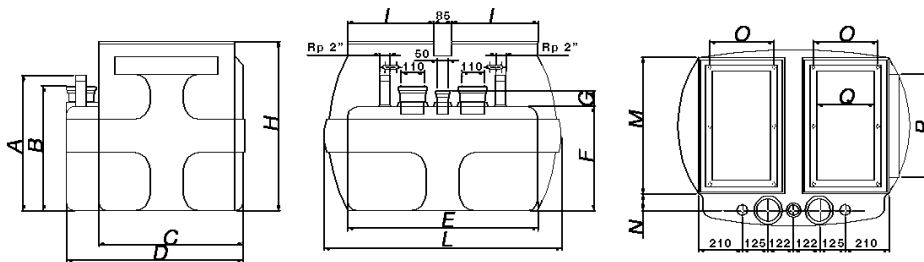
Component	Material	
Pump casing	X 5 CrNi 1810 (AISI 304) Stainless steel	
Suction base	X 5 CrNi 1810 (AISI 304) Stainless steel	
Impeller	X 5 CrNi 1810 (AISI 304) Cast stainless steel	
Power cable	10 m H07 RN-F	
Motor shaft	X 12 CrNi 1809 (AISI 416) Stainless steel	
Mechanical seal	Silicum carbide	Oil chamber for seal lubrication
Counterface	Silicum carbide	
Secondary seal	NBR rubber lip seal	
V-ring sand protection	NBR rubber	

TABLE OF HYDRAULIC PERFORMANCE OF A SINGLE PUMP



PUMP PERFORMANCE

CODE	MODEL	Nominal power		Absorbed power		VOLTAGE	Amp.	μF.	Q	50	100	150	200	250	300	400	
		HP	kW	HP	kW					L/1'	3	6	9	12	15	18	24
N2141200	VS 500 TWIN - P 300 M	0,8	0,6	1,2	0,9	1 ~ 230 V	4,1	12,5	Discharge head in meters	7,7	6,4	5	3,8	2,3	1		
N2141210	VS 500 TWIN - P 300 T	0,8	0,6	1,2	0,9	3 ~ 400 V	1,55										
N2141220	VS 500 TWIN - P 460 M	1,4	1	2,2	1,6	1 ~ 230 V	7,2	20		11,8	10,8	9,8	8,5	7	5,5	2	
N2141230	VS 500 TWIN - P 460 T	1,4	1	2	1,45	3 ~ 400 V	2,4										



DIMENSIONS AND WEIGHTS

Model	Dimensions mm.															Weight kg
	A	B	C	D	E	F	G	H	I	L	M	N	O	P	Q	
VS 500 TWIN - P 300 M	650	600	695	850	915	500	80	815	415	1140	655	77,5	310	495	280	89,4
VS 500 TWIN - P 300 T	650	600	695	850	915	500	80	815	415	1140	655	77,5	310	495	280	89,4
VS 500 TWIN - P 460 M	650	600	695	850	915	500	80	815	415	1140	655	77,5	310	495	280	93,8
VS 500 TWIN - P 460 T	650	600	695	850	915	500	80	815	415	1140	655	77,5	310	495	280	93,8