



SBC

Heating/Cooling

1" x 1" Hose Connections

MP Pump's SBC pump is designed specifically for the school bus market. Pumping engine cooling water to heat the inside of the coach, the SBC keeps our most valued passengers warm and the windows defrosted. Constructed of all die cast aluminum components, the new SBC offers superior strength. Additionally, the new SBC has a ball bearing motor construction.

For hassle-free, easy installation, the SBC was designed as a drop-in replacement for many current installations. It's completely interchangeable with most existing pumps and last upwards of 7500 hours—just take out the old and drop in the new—no hassles.

CHECK THESE FEATURES:

- Aluminum construction
- Nickel steel impeller
- Buna N / carbon / ceramic seal
- Permanent magnet motors, 12 & 24 volt
- 7500 hours life
- 1" x 1" hose connections
- Drop-in replacement for many current installations

12 and 24 Volt DC Permanent Magnet

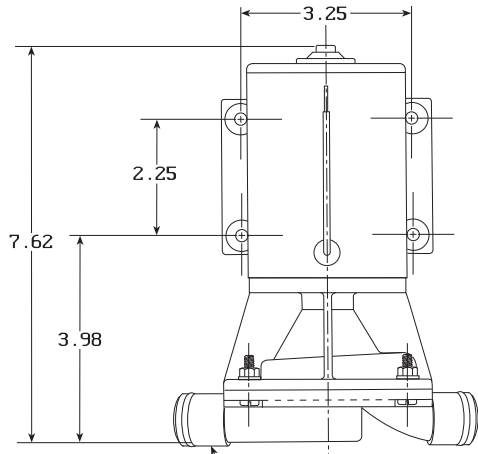
motralec

4 rue Lavoisier . ZA Lavoisier . 95223 HERBLAY CEDEX

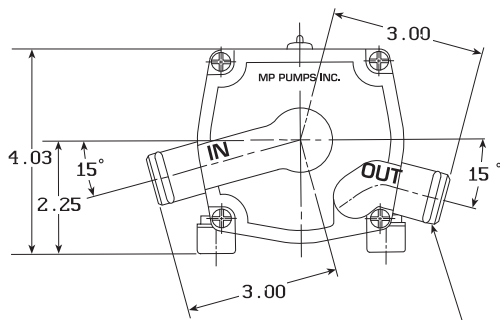
Tel. : 01.39.97.65.10 / Fax. : 01.39.97.68.48

Demande de prix / e-mail : service-commercial@motralec.com

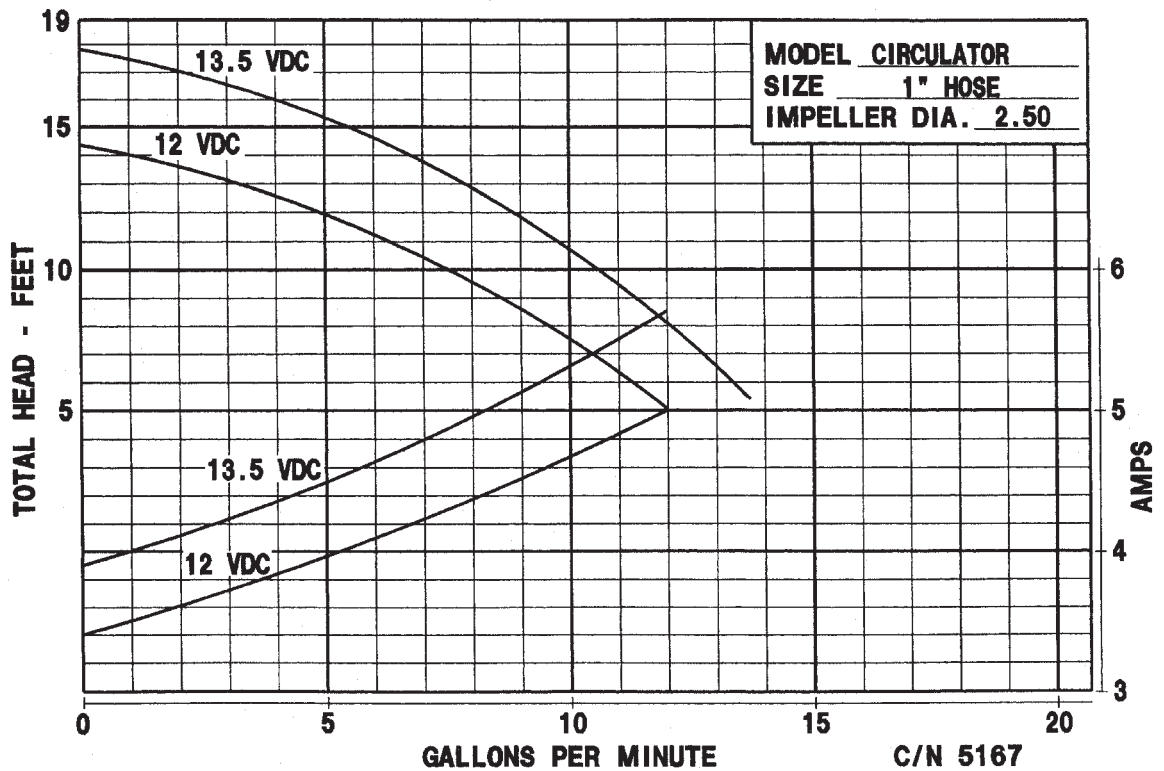
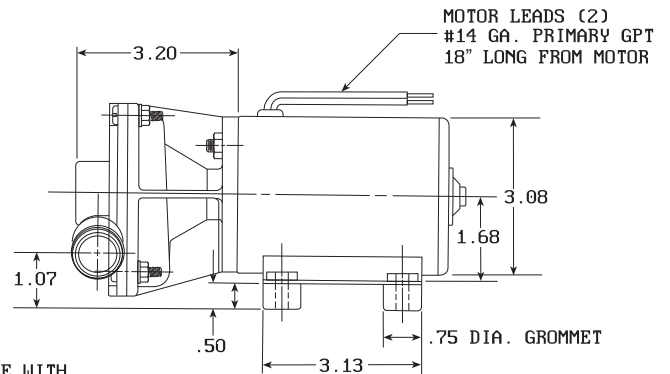
www.motralec.com



SIZED FOR USE WITH
1" I.D. HOSE



SIZED FOR USE WITH
1" I.D. HOSE



motralec

4 rue Lavoisier . ZA Lavoisier . 95223 HERBLAY CEDEX

Tel. : 01.39.97.65.10 / Fax. : 01.39.97.68.48

Demande de prix / e-mail : service-commercial@motralec.com

www.motralec.com