



HYDRASUB 20 is a compact, lightweight, hydraulically driven submersible pump with high flow capabilities. This self-priming pump is made with a high strength aluminum alloy that is anodized for corrosion resistance. This pump features a stainless steel impeller, ball bearing, and a gerotor type hydraulic motor.

SPECIFICATIONS

Capacity..... Up to 300 gpm (1,136 lpm)
 System..... Open and Closed Center

Hydraulic Ports..... 3/4-16 SAE O-RING
 Oil Flow Range..... 5-9 gpm (19-34 lpm)
 Max Oil Pressure..... 2000 psi (13,790 kPa)
 Max Back Pressure..... 100 psi (690 kPa)

Pump Outlet Port..... 2" A-Type Cam and Groove
 Max Solids..... Up to 1/2"

Pumps down to 3/4 " from bottom

Weight..... 13 lbs (4.85 kg)
 Height..... 11.5 " Over Handle (29.2 cm)
 Width..... 9.5" diameter (24.13 cm)

HYDRASUB 20 2"

- **SUBMERSIBLE**
- **HIGH FLOW**
- **HYDRAULIC DRIVEN**
- **COMPACT DESIGN**

FLOW RATES UP TO 300 GPM

STAINLESS STEEL IMPELLER

CORROSION
RESISTANT

ANODIZED ALUMINUM
ALLOY BODY

STAINLESS STEEL
COMPONENTS

SELF-PRIMING,
CAN RUN DRY
WITHOUT DAMAGE

QUIET OPERATION
WITH GEROTOR
MOTOR

COMPACT,
LIGHTWEIGHT
DESIGN

CARRYING
HANDLE

motralec

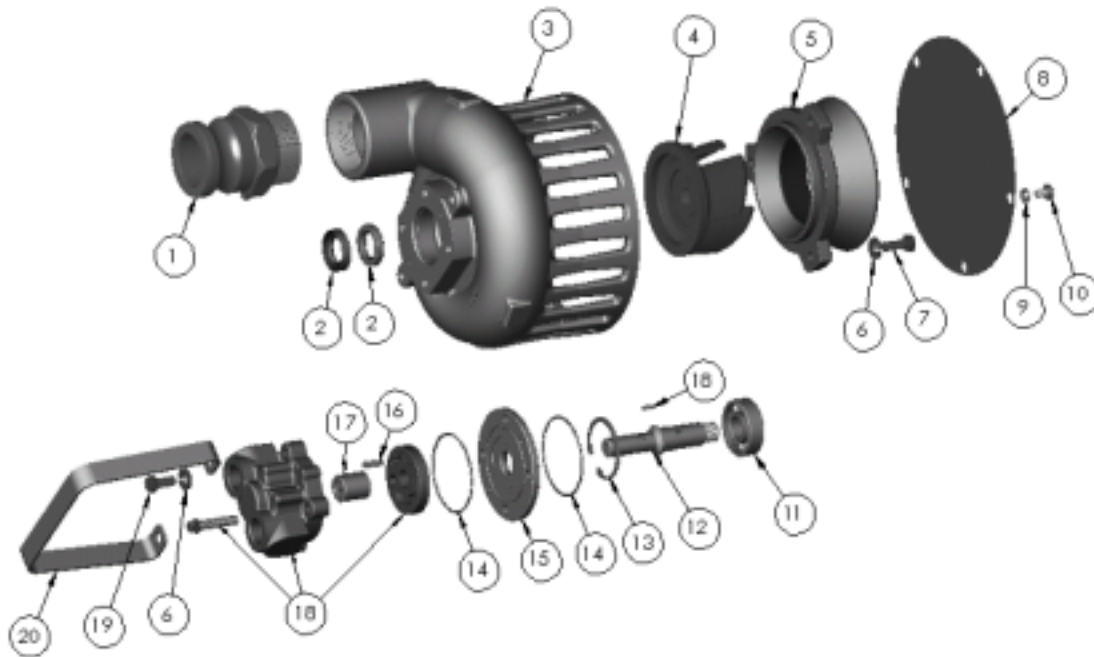
4 rue Lavoisier . ZA Lavoisier . 95223 HERBLAY CEDEX

Tel. : 01.39.97.65.10 / Fax. : 01.39.97.68.48

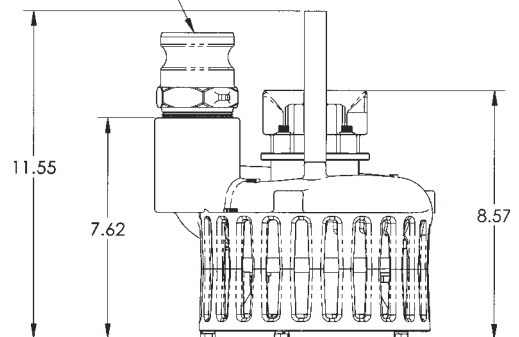
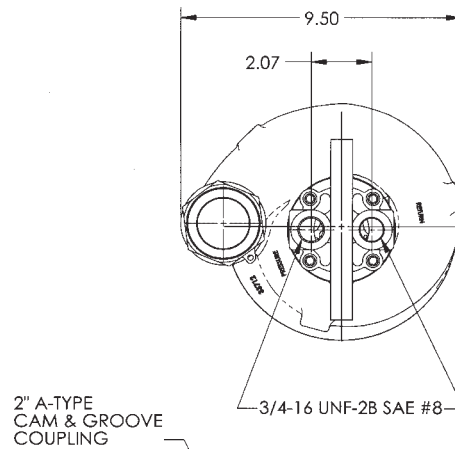
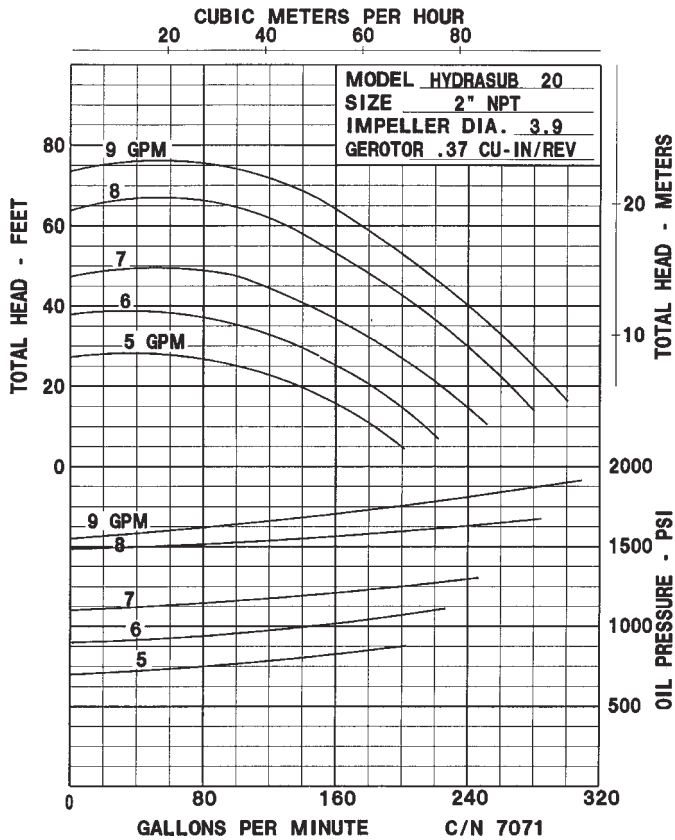
Demande de prix / e-mail : service-commercial@motralec.com

www.motralec.com

Form 8107A (05/04)



ITEM	PRT. NO.	QTY.	DESCRIPTION	ITEM	PRT. NO.	QTY.	DESCRIPTION	ITEM	PRT. NO.	QTY.	DESCRIPTION
1	34622	1	2" COUPLING	8	33736	1	COVER PLATE	15	33724	1	THRUST PLATE
2	33718	2	LIP SEAL	9	33584	5	W" LOCKWASHER	16	33748	2	DOVEL PIN
3	33713	1	HOUSING	10	30951	5	W-20 X 3/8" CAPSCREW	17	25046	1	NEEDLE BEARING
4	30718	1	IMPELLER SS	11	27556	1	BALL BEARING	18	20857	1	HYD. MOTOR
5	33715	1	SUCTION FLANGE	12	33728	1	SHAFT	19	30028	2	5/16-18 X 1/2" CAPSCREW
6	21238	5	5/16" LOCKWASHER	13	33742	1	RETAINING RING	20	33778	1	HANDLE
7	20242	3	5/16-18 X 7/16" CAPSCREW	14	34854	2	QUAD RING				



motralec

4 rue Lavoisier . ZA Lavoisier . 95223 HERBLAY CEDEX
 Tel. : 01.39.97.65.10 / Fax. : 01.39.97.68.48
 Demande de prix / e-mail : service-commercial@motralec.com

www.motralec.com