

# MP PUMPS, INC.

## FRX75 SP HYD

### Hydraulic Driven Centrifugal Pump

Model FRX75-SP HYD is a high performance self-priming 316 stainless steel centrifugal pump close coupled to a hydraulic motor. The pump is ideal for marine, agricultural, and industrial applications where suction lift is required.

The FRX75-SP HYD model features all 316 stainless steel components for superior corrosion resistance when pumping chemical compounds. A carbon/ceramic/viton bellows shaft seal is standard. Ports are 3/4" NPT with a 1/8" NPT fill port. The check valve flapper design enhances the self-priming capability to 12 foot suction lift.

The hydraulic motor is designed with SAE #6 ports for the tank side while the pressure side has SAE # 4 ports. Maximum Pressure is 1000 PSI. Maximum Oil Flow is 3 GPM.



### SPECIFICATIONS:

<b>Housing</b> . . . . .	<b>316 Stainless Steel (Investment Cast)</b>
<b>Cover</b> . . . . .	<b>316 Stainless Steel (Investment Cast)</b>
<b>Impeller</b> . . . . .	<b>316 Stainless Steel Semi-Open (Sintered PM)</b>
<b>Wear Plate</b> . . . . .	<b>316 Stainless Steel</b>
<b>Mechanical Seal</b> . . .	<b>Carbon/Ceramic/Viton Bellows 150 PSI Special Seals Upon Request</b>
<b>O-ring/Flapper</b> . . . .	<b>Viton</b>
<b>Hydraulic Motor</b> . . . .	<b>Iron, Gerotor Type, .08 Cu. In. Displacement</b>
<b>Weight</b> . . . . .	<b>12 lbs.</b>

### COMPATIBLE FOR:

#### Application:

- Marine
- Agricultural
- Industrial

#### Construction

- 316 Stainless Steel Investment Cast

#### Hydraulic Motor

- .08 cu. in displacement
- Max. Oil Flow: 3 GPM
- Max. Pressure: 1000 PSI

#### Hyd. Motor Port Sizes:

- SAE # 4 Pressure
- SAE # 6 Tank

#### Port Sizes:

- 3/4" NPT
- 1/8" NPT Fill Port

#### Mechanical Seal

- Carbon/Ceramic/Viton

**motralec**

4 rue Lavoisier . ZA Lavoisier . 95223 HERBLAY CEDEX

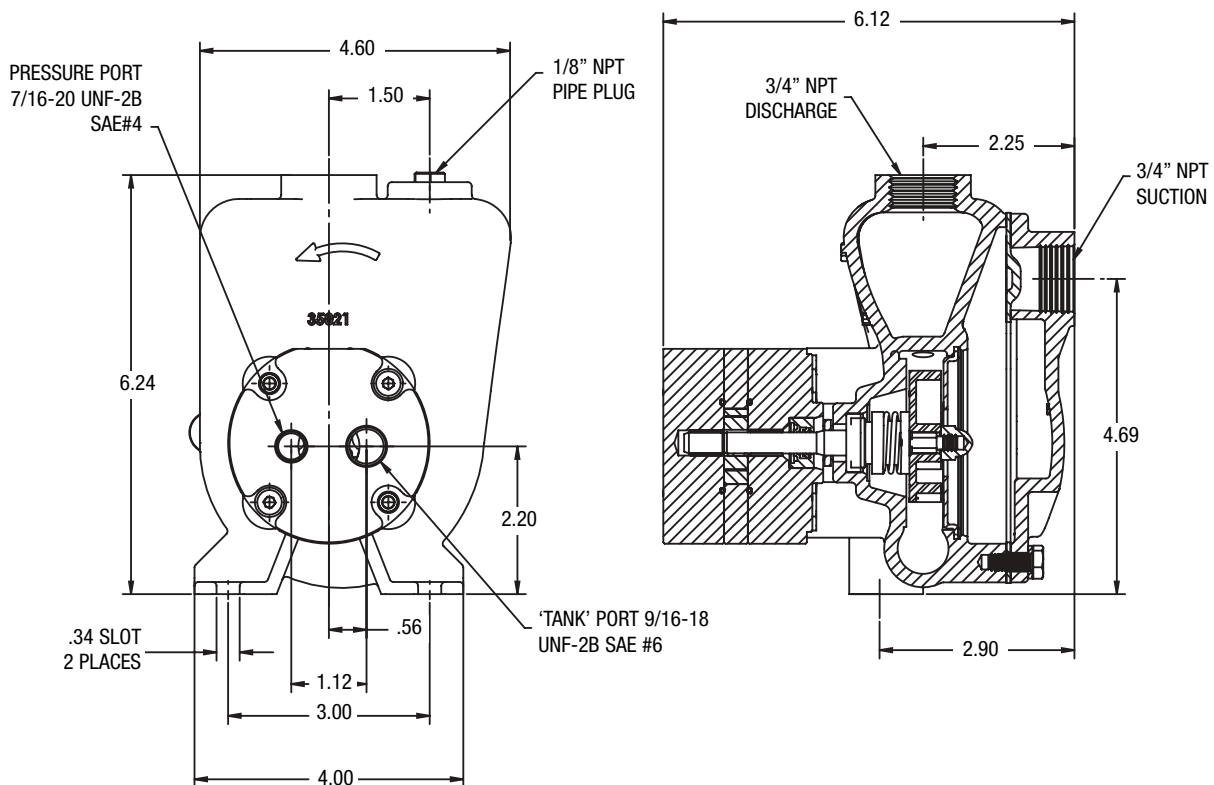
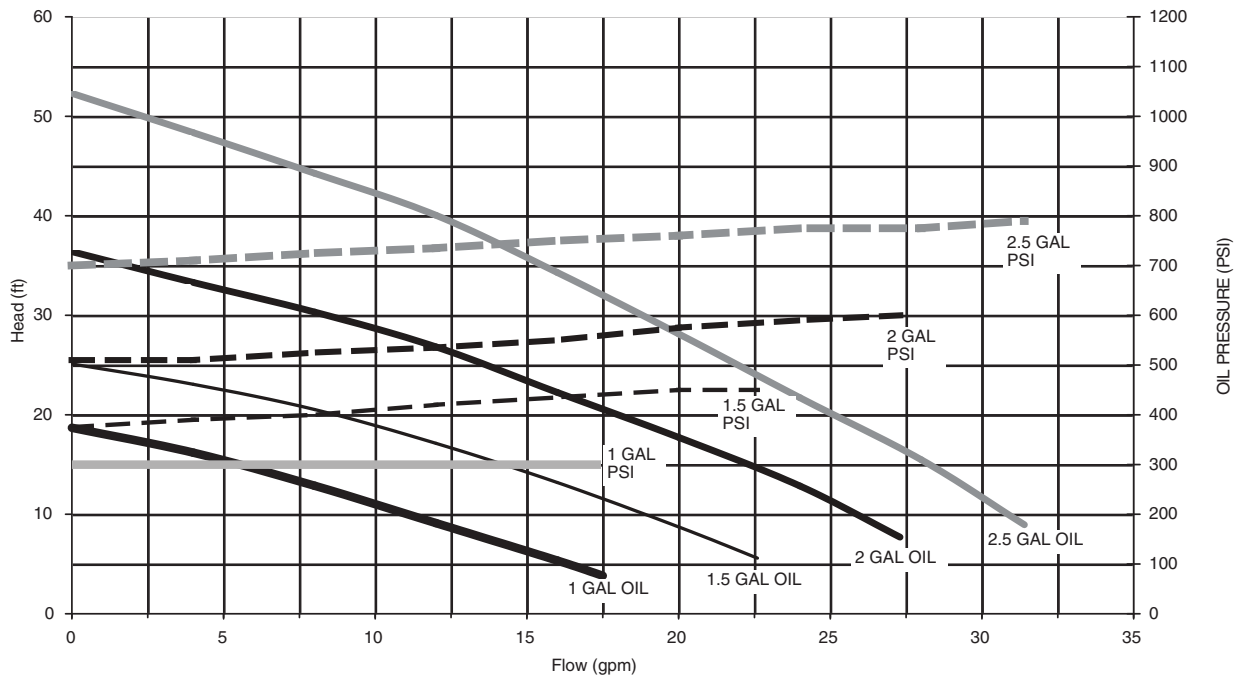
Tel. : 01.39.97.65.10 / Fax. : 01.39.97.68.48

Demande de prix / e-mail : [service-commercial@motralec.com](mailto:service-commercial@motralec.com)

[www.motralec.com](http://www.motralec.com)

## Hydraulic Motor Drive

### Flow vs. Head/Pressure



**motralec**

4 rue Lavoisier . ZA Lavoisier . 95223 HERBLAY CEDEX  
 Tel. : 01.39.97.65.10 / Fax. : 01.39.97.68.48  
 Demande de prix / e-mail : service-commercial@motralec.com  
[www.motralec.com](http://www.motralec.com)