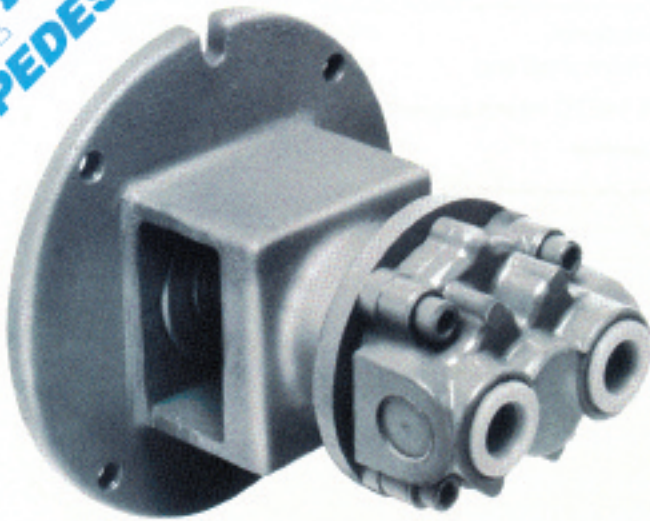


HY SPEED HYDRAULIC PEDESTAL



Increase your pump performance with MP's new high speed pedestal designed for long life and limited space where Hy pressures are required. Each unit mounts to 6 different MP models all with a wide range of materials of construction, elastomers and options.

Features include:

- Rugged bearing frame design with high speed gerotor motor for continuous duty.
- Less noise than gear motors.
- Compact and easy to service.
- Compatible with all MP pumps designed for NEMA 145TC mounting.
- Rear port hydraulic connections for limited space requirements.
- SAE 8 (3/4-16 U.N.F.) ports

MATERIALS

Shaft	8620 Alloy Steel
Housing	Cast Iron, Class 30
Motor Body	Aluminum
Gerotor Set	Sintered Steel
Bearings	5304 Double Row, 6305 Single, 1016 Needle
Shaft Seal	Buna Double-Lip

Hy SPEED HYDRAULIC PEDESTAL

FOR USE ON ALL MP PUMPS
DESIGNED FOR
NEMA 145TC MOUNTING

FLOMAX 5

FLOMAX 8

SERIES 60

SERIES 80

SERIES 110

SERIES 130

motralec

4 rue Lavoisier . ZA Lavoisier . 95223 HERBLAY CEDEX
Tel. : 01.39.97.65.10 / Fax. : 01.39.97.68.48
Demande de prix / e-mail : service-commercial@motralec.com

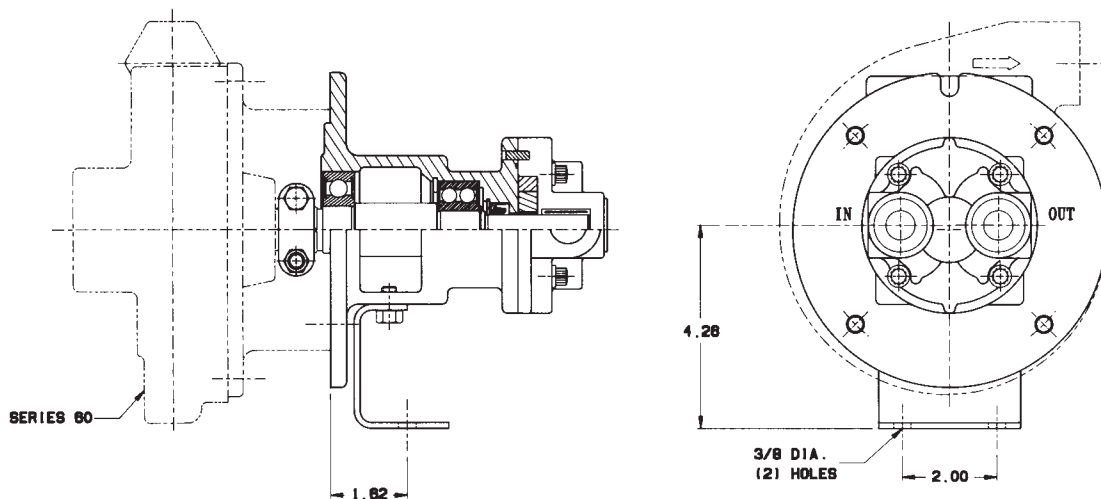
www.motralec.com

GEROTOR MOTOR

SPEEDS TO 5000 RPM
OIL FLOWS TO 9GPM

HY SPEED HYDRAULIC PEDESTAL

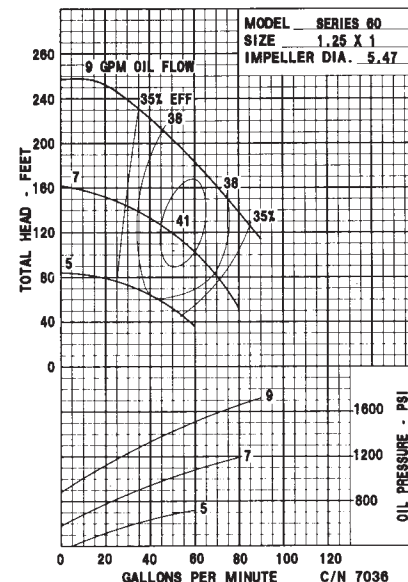
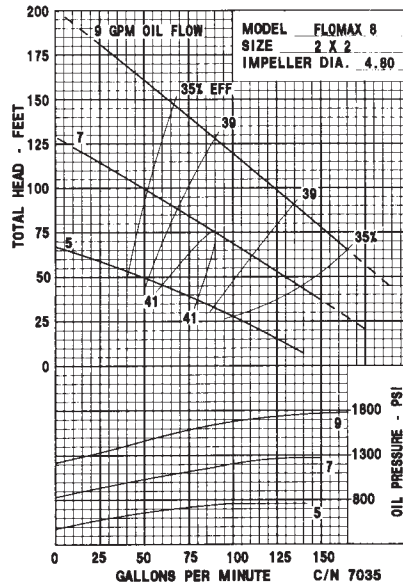
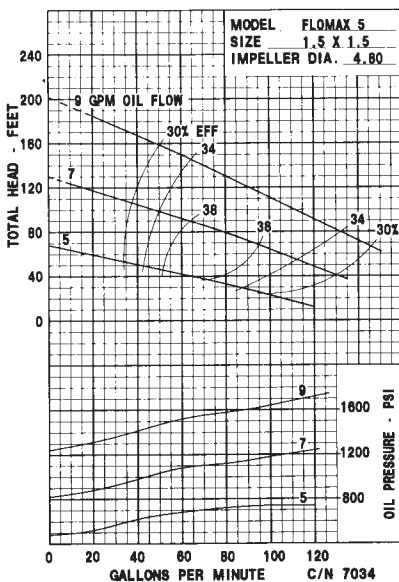
CHARACTERISTICS	SPECIFICATIONS
Rotation	Uni-directional, CCW from shaft end
Mounting Face	NEMA 145TC interchangeable
Output Shaft	7/8 diameter
Displacement372 cu. in. per rev.
Oil Flow	9 gpm max. continuous
Pressure	2000 psi max. continuous 2500 psi max. intermittent
Back Pressure	70 psi max.
Temperature	160°F max.
Viscosity	60-150 ssu
Output Power	8.2 hp max @ 2000 psi, 5000 rpm
Starting Torque	60 in.-lbs. @ 1500 psi 72 in.-lbs. @ 2000 psi



FLOMAX 5

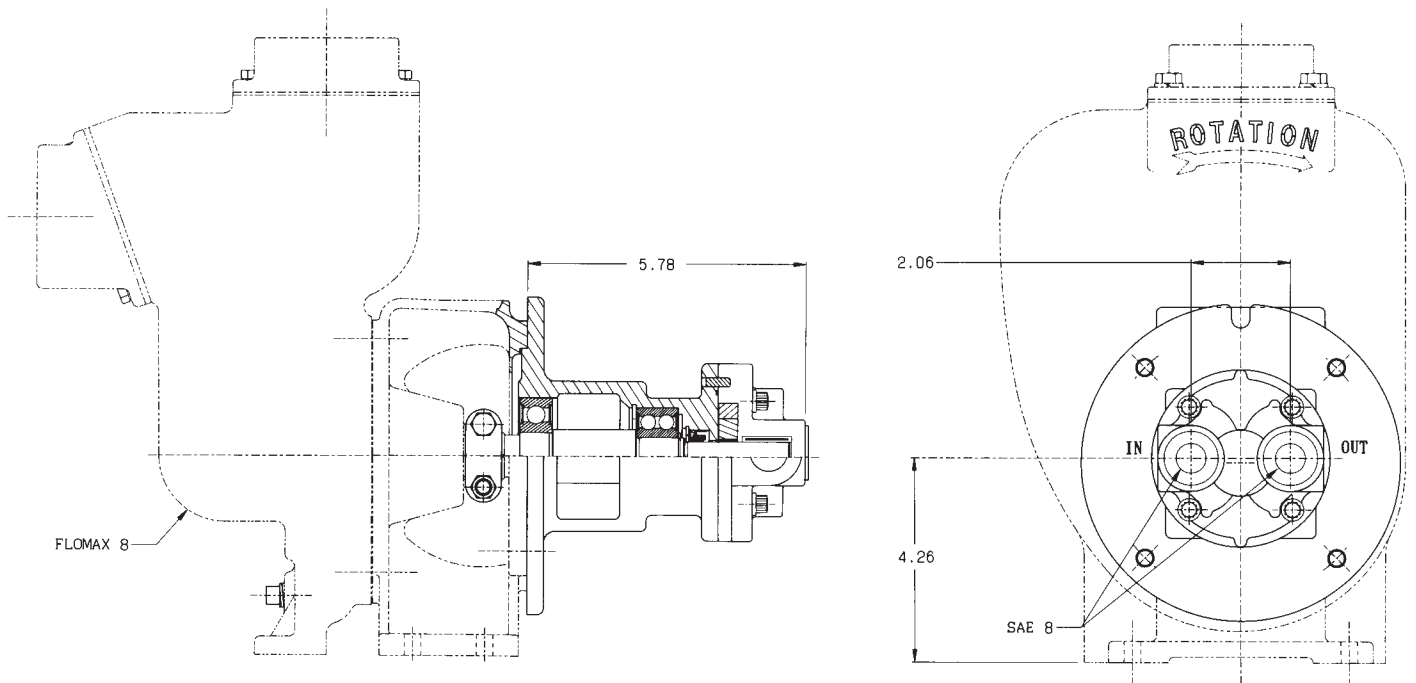
FLOMAX 8

SERIES 60

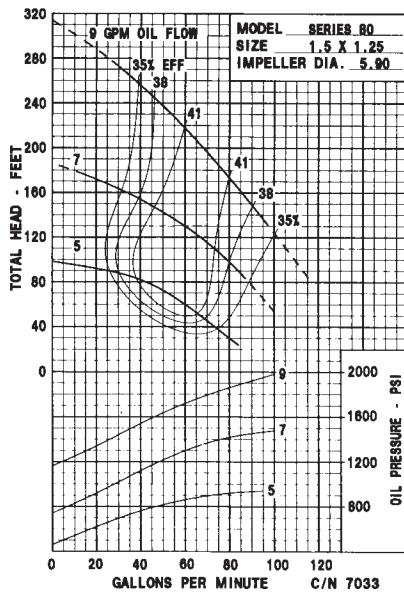


PERFORMANCE CURVE TEST CONDITIONS

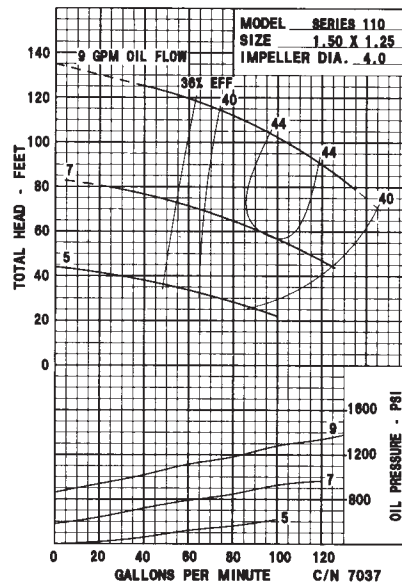
- 10 wt. industrial oil
- Oil temperature 100-120°F
- 1 foot flooded suction at pump, reduced flow rates may occur from lift suction conditions, see other static lift performance curves.
- Efficiency is combined motor and pump efficiency to show best operating conditions.
- Broken line represents intermittent duty, not intended for continuous use.
- When pumping liquids heavier than water, oil pressure must not exceed 2000 psi.



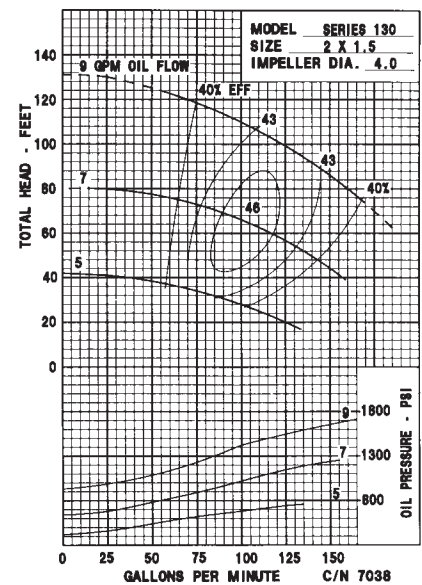
SERIES 80



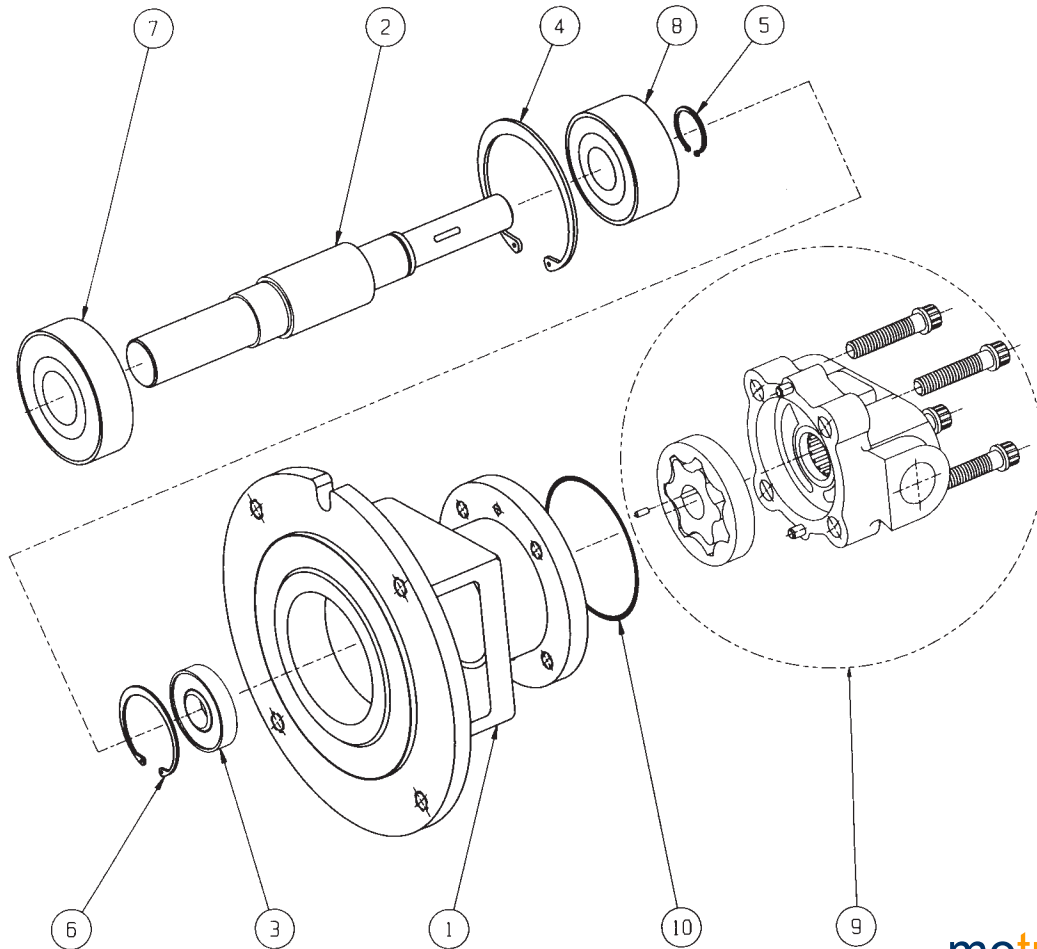
SERIES 110



SERIES 130



HY SPEED HYDRAULIC PEDESTAL



motralec

4 rue Lavoisier . ZA Lavoisier . 95223 HERBLAY CEDEX

Tel. : 01.39.97.65.10 / Fax. : 01.39.97.68.48

Demande de prix / e-mail : service-commercial@motralec.com

www.motralec.com

ITEM	PART NO.	DESCRIPTION	QTY	ITEM	PART NO.	DESCRIPTION	QTY
HIGH SPEED ASSEMBLY							
	29014	HIGH SPEED ASSY. - ITEMS #1 THRU 10	1	8	29024	DOUBLE ROW BALL BEARING	1
	29139	HIGH SPEED ASSY. W/BASE (NOT SHOWN)	1	9	29138	MOTOR PARTS SERVICE	1
1	29016	BEARING HOUSING	1	10	29026	O-RING	1
2	29017	SHAFT	1	11	29022	BASE (OPTIONAL - NOT SHOWN)	1
3	29018	LIP SEAL	1	12	41239	HEX HEAD CAPSCREW	
4	29019	SNAP RING INTERNAL	1			(OPTIONAL NOT - SHOWN)	2
5	29020	SNAP RING EXTERNAL	1	13	41383	LOCKWASHER (OPTIONAL - NOT SHOWN)	2
6	29021	SNAP RING INTERNAL	1				
7	29023	SINGLE ROW BALL BEARING	1				



MP PUMPS, INC.
TECUMSEH PRODUCTS COMPANY

34800 BENNETT DRIVE • FRASER, MI 48026-1686
(810) 293-8240 • FAX (810) 293-8469
800 563-8006

CONSULT FACTORY FOR CHEMICAL COMPATIBILITY.

LITHO IN U.S.A.