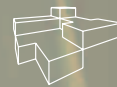




DEPURBOX Series
Domestic sewage
treatment systems



DEPURBOX SERIES

ADVANTAGES:

- Extremely high purification efficiency, for safe discharge into surface waters or ground.
- Highly resistant and compact system (quick to install, very small dimensions).

MARKET SECTORS

RESIDENTIAL



Example of installation

APPLICATIONS

- Disposal of domestic sewage where a public sewer system is not accessible.

SPECIFICATIONS

- Depurbox is a range of compact, **activated sludge** treatment systems that enable discharge of domestic sewage in accordance with EEC Directive 91/271. The treated effluent can thus be discharged directly into the **sewer system** or into **surface waters** or **ground** (with an optional tertiary treatment).
- The system consists of:
 - a one-piece basin made of **fibreglass-reinforced polyester resin**, featuring three separate chambers corresponding to the three stages of the treatment process: **primary settlement, oxygenation** and **secondary settlement**;
 - a **Domo 7 VX single-phase electric pump** with Vortex impeller for effluent handling and oxygenation;
 - a **Venturi** oxygenation system which, together with the electric pump, ensures a typical treatment efficiency of **90%**;

a **timer** for setting the required operating cycles; DN 100 inlet and outlet piping.

- Three sizes available:
 - Depurbox Base**, up to 5 population equivalent;
 - Depurbox Maxi**, featuring a separate primary settlement tank;
 - Depurbox Duo**, with separate double tank and primary settler.
- **Quick and easy installation**: just prepare the excavation, position Depurbox, make the hydraulic and electrical connections (single-phase), then complete the burial by positioning the external air intake and inspection accesses.
- **Easy maintenance**: just check the condition of the sludge at periodic intervals and, if necessary, empty out the basin.

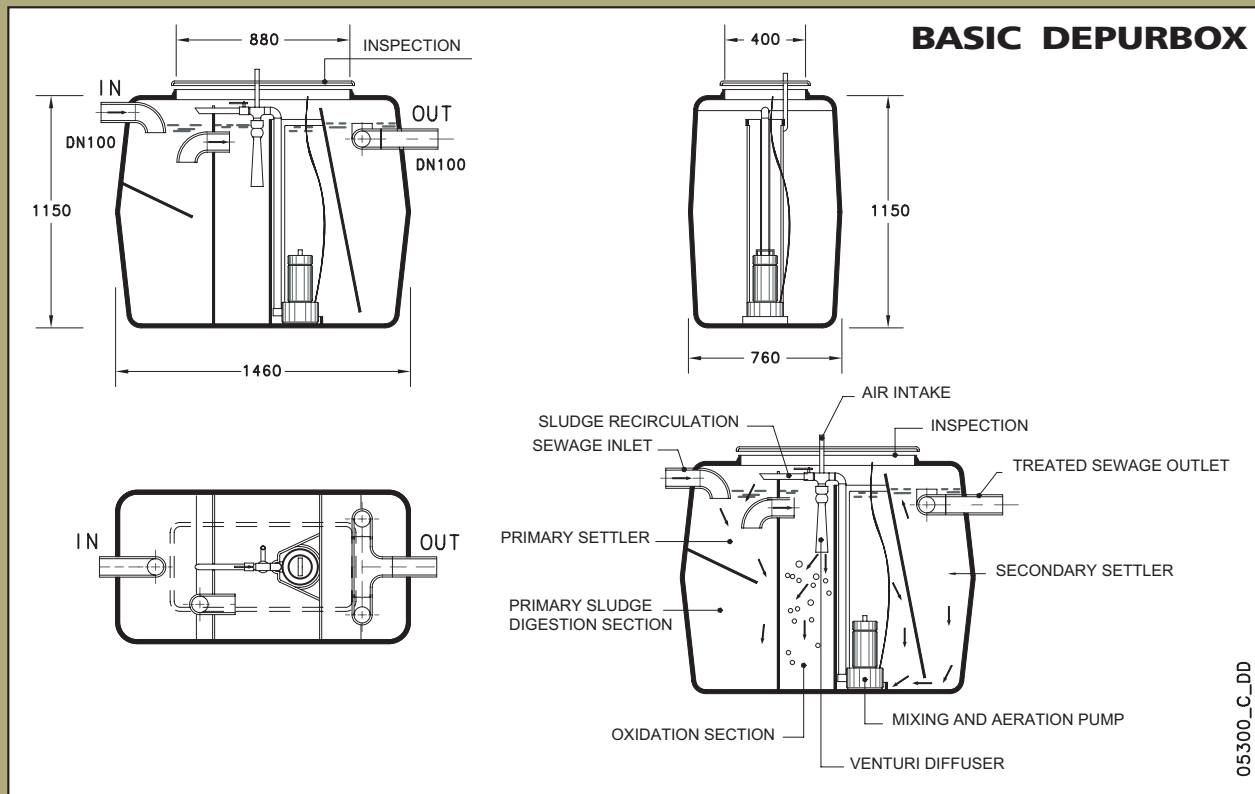
DEPURBOX TABLE

OPERATING PARAMETERS	Unit of measurement	MODEL		
		BASIC	MAXI	DUO
Type of premises		RESIDENTIAL		
Number of inhabitants (Population Equivalent)	up to	5	10	20
Per capita water supply	litres/head/day	200		
Daily discharge volume	m ³	1	2	4
Total useful volume	litres	1150	2050	3770
Primary settlement volume	litres	200	900	1470
Oxidation-nitrification volume	litres	750	950	1900
Secondary settlement volume	litres	200	200	400
Primary settlement time	hours	~ 1	~ 2	~ 2
Secondary settlement time	hours	> 2		
Settlement rising speed	m/h	0,3		
Average flow per hour	l/h	60	125	250
Maximum flow per hour	l/h	120	250	500
Pump power	W	550	550	1100
Daily organic load	kgBOD ₅ /day	0,3	0,6	1,2
Volumetric organic load	kgBOD ₅ /m ³ day	0,4	0,63	0,63
Supplied oxygen factor	kgO ₂ /kgBOD ₅	> 2,5		
Organic pollution	gBOD ₅ /head/day	60		
BOD ₅ concentration (outlet)	mg/l	< 30		
Treatment efficiency	%	90		

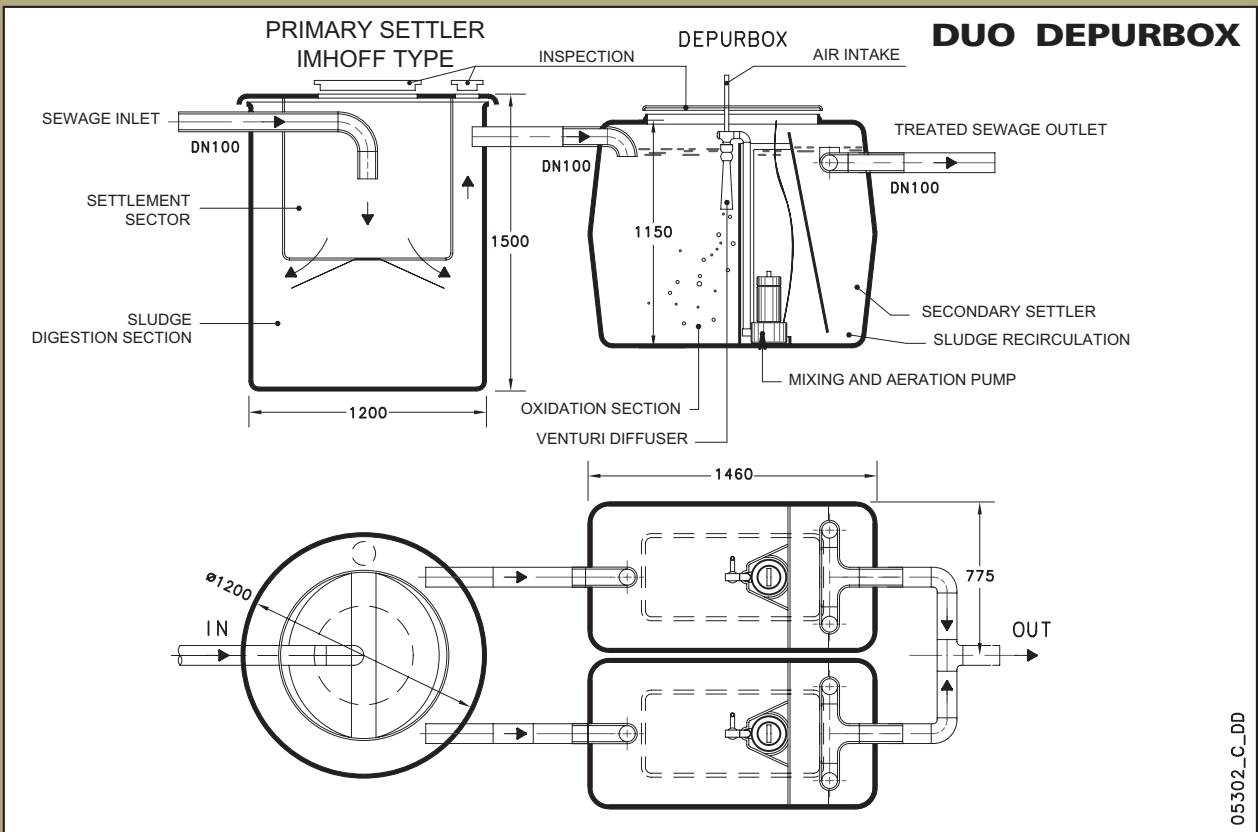
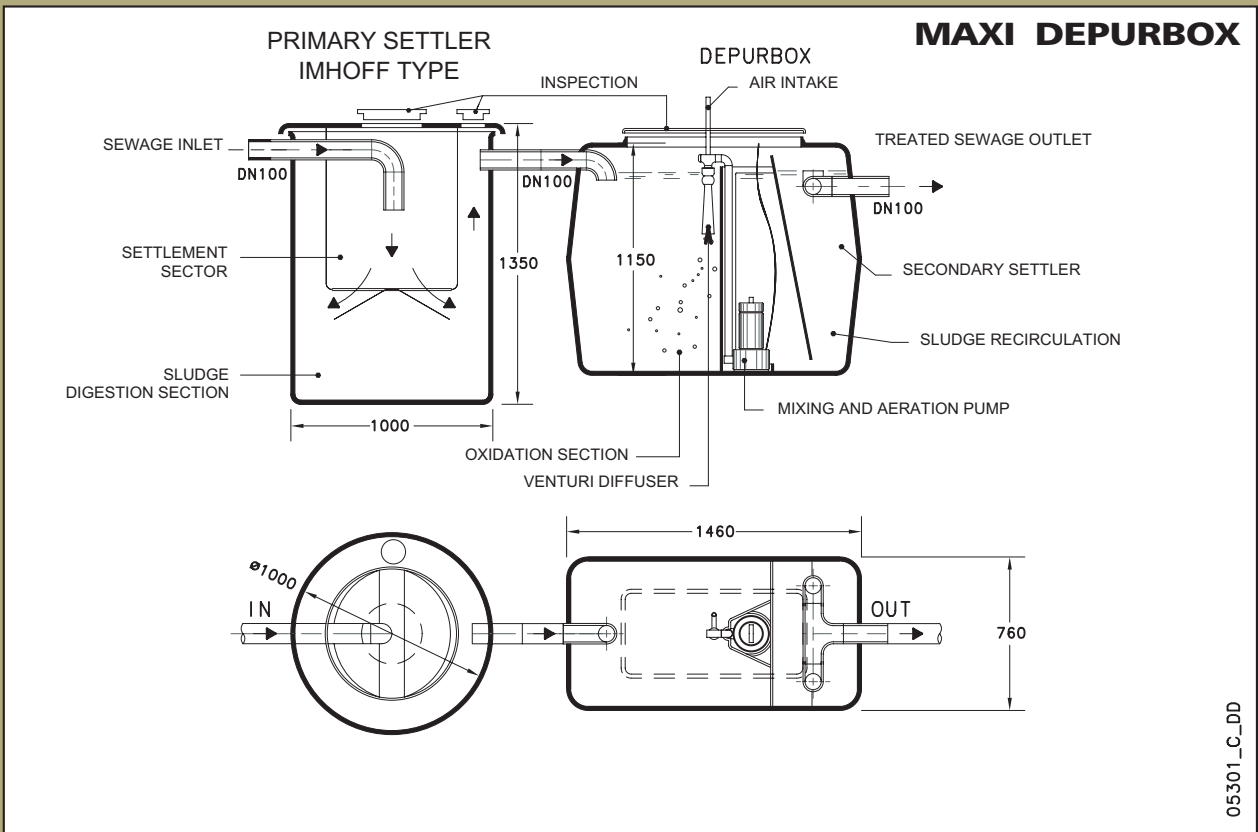
SUBSTANCE	MAXIMUM ADMISSIBLE CONCENTRATION IN WASTEWATER	
Ammonia nitrogen	mg/l	25
Nitric nitrogen	mg/l	25
Inlet BOD ₅ concentration	mg/l	300
Inlet COD concentration	mg/l	600
Phosphorus	mg/l	10
Fats	mg/l	20÷30
pH	-	6 - 8
Total suspended solids	mg/l	300
Total surface-active agents	mg/l	10

dpbx_dati-tec_d_sc

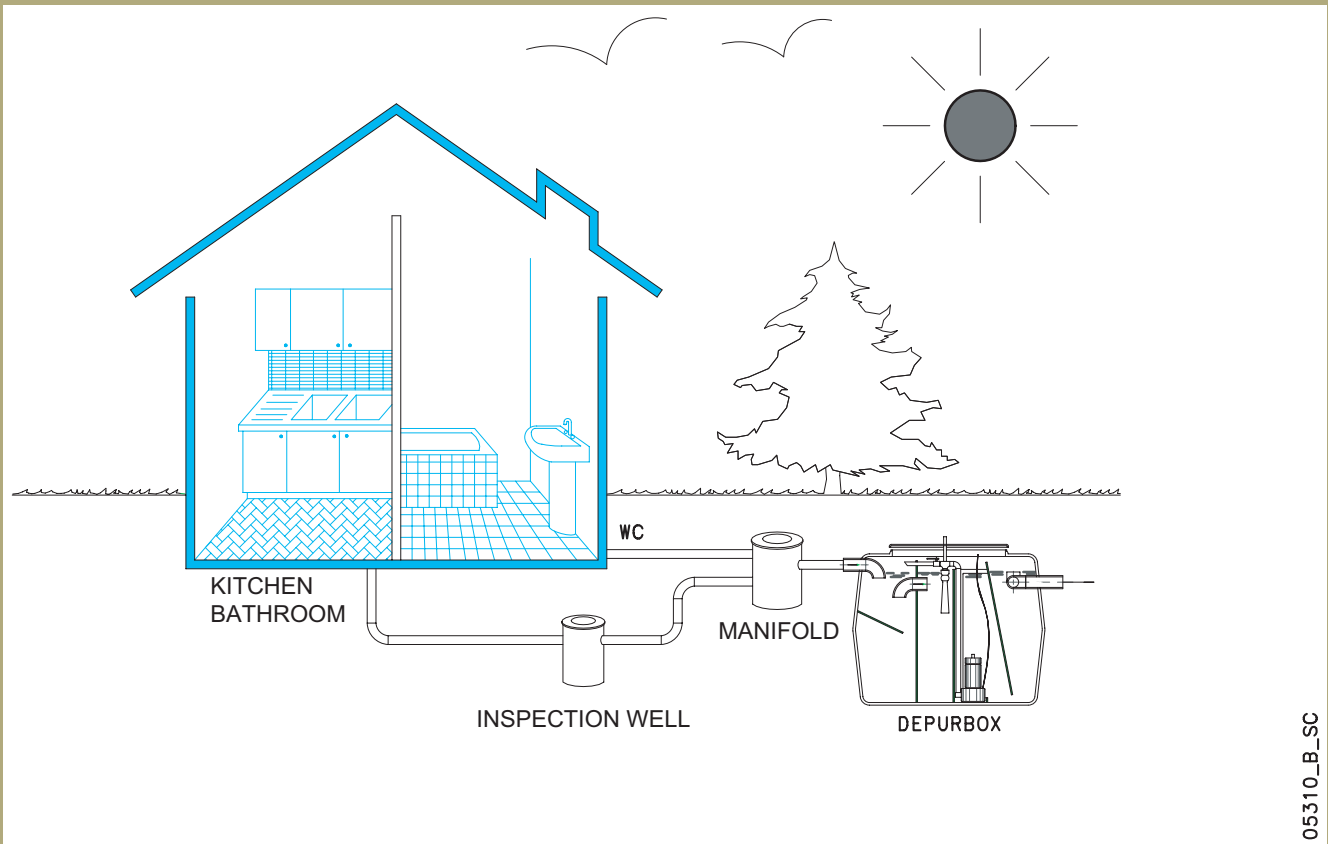
DIMENSIONS AND VERSIONS



DIMENSIONS AND VERSIONS



INSTALLATION EXAMPLE



NOTES:

- Adequate housing must be provided if the installation is to withstand foot traffic.
- If necessary, a Singlebox or Doublebox-type lifting station can be installed downstream or upstream of the system.



motralec

4 rue Lavoisier . ZA Lavoisier . 95223 HERBLAY CEDEX
Tel. : 01.39.97.65.10 / Fax. : 01.39.97.68.48
Demande de prix / E-mail : service-commercial@motralec.com
www.motralec.com