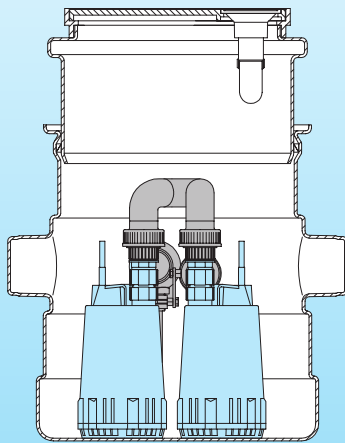
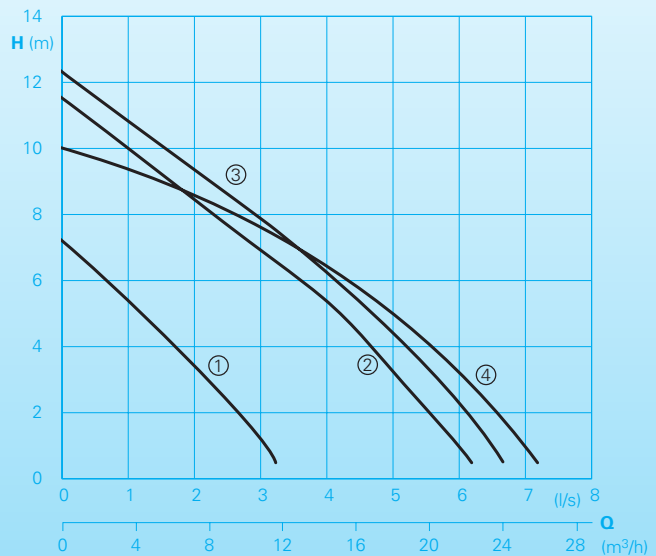


Domestic waste water disposal unit - twin pump station with under-floor collecting tank.

Saniquick UFT



Performances



Application

HOMA Saniquick UFT is used for removal of waste water from hand basins, washing machines, showers or bath and cellar de-watering in rooms below the sewer level. Installation as a collecting tank for rainwater in cellars, basements, baths and garages.

Installation: Collecting tank for under-floor installation with adjustable access cover.

Pumped liquid: Clear water and drainage water. Max. liquid temperature: 35°C, short term up to 60°C.

Design

Waste water disposal twin pump station for under-floor installation consisting of:

Collecting tank: Plastic tank fixed to prevent lifting, volume 40 l, with 3 inlets DN 100. Connecting piece DN 70 for air vent and cable duct. Frame with adjustable height to adapt the cover plate to the floor level. Odour tight cover plate with floor drain. The cover plate can be used as a gutter or a tile frame. Both frame and plate are adjustable in height and capable of being turned through 360°, for adjustment to the floor level and direction of tiles after the tiles have been laid.

Discharge connector and pipe for the pump are fitted in the tank, including a non-return valve in the pipework.

Technical Data

Curve No.	Pump type	Motor input P ₁ (kW)	Motor output P ₂ (kW)	Voltage 50 Hz (V)	Nominal current (A)	Discharge	Weight (kg)
①	C 235 W	0,35	0,18	230/1Ph	1,8	BSP 1 1/4" F	4,6
②	C 290 W	1,20	0,91	230/1Ph	5,0	BSP 1 1/4" F	8,3
③	C 290 D	1,10	0,86	400/3Ph	2,0	BSP 1 1/4" F	8,3
④	TP 28 V W	1,10	0,90	230/1Ph	5,6	BSP 1 1/2" F	22,0

Speed: 2900 rpm

Pump/Motor: Two single stage centrifugal submersible drainage pumps. Open multi-channel impeller, spherical clearance 10 mm dia.

Models C235-C290 with open multi-channel impeller, spherical clearance 10 mm. Pressure tight electric motor, jacket cooled. Insulation class F. Degree of protection IP68.

Model TP28V with Vortex impeller, spherical clearance 28 mm dia., pressure tight electric motor, insulation class F, degree of protection IP68.

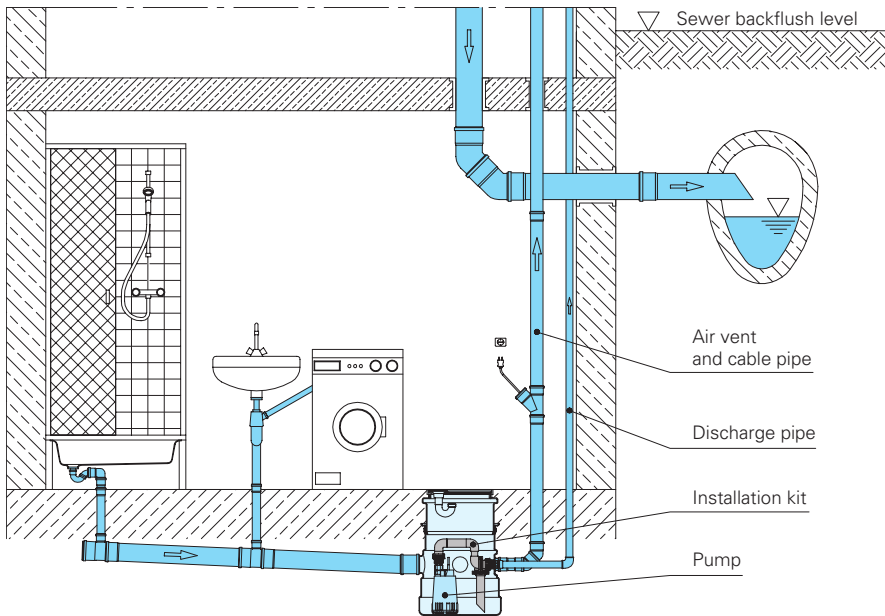
Control box: Electronic control box for control and monitoring of all important functions. Pneumatic level control with pressure operation. Auto-change over after each pump cycle. Operation of both pumps at high flow. In the event of failure automatic change over to the second pump. Motor protection relay. Optical failure alarm. Acoustic alarm by buzzer. Volt free contact for remote signal. Control in-

dication for direction of rotation. Connection for ServCom controller (see accessories). Mains-independent alarm by installing a 9V battery (see accessories).

Materials:

Collecting tank	Polyethylene
Installation kit	PVC
Pump housing	Composite (C 235 - C 290) Cast iron GG25/EN-GJL-250 (TP 28 V)
Motor housing	Stainless steel (C 235 - C 290) Cast iron GG25/EN-GJL-250 (TP 28 V)
Impeller	Composite (C 235 - C 290) Cast iron GG25/EN-GJL-250 (TP 28 V)
Rotor shaft, screws	Stainless steel
Seal kit	Perbonane

Installations

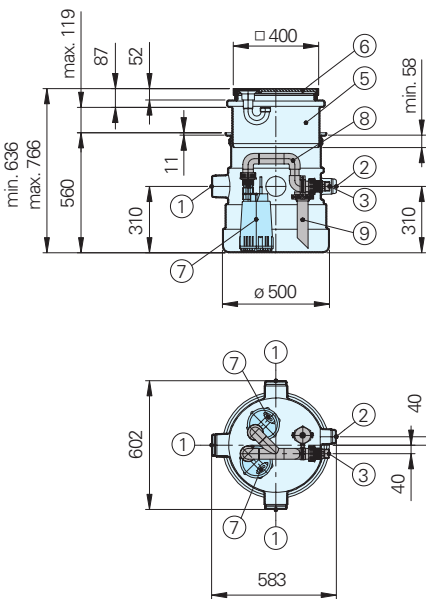


Equipment supplied / Accessories

Part Description	Part No.
Saniquick UFT collecting tank with cover frame and cover plate, 2 pumps with non-return-valve and discharge pipe, control panel with pneumatic level control and alarm device.	
Models:	
Saniquick UFT – C235W	9804050
Saniquick UFT – C290W	9804052
Saniquick UFT – C290D	9804054
Saniquick UFT – TP28V W	9804056
Extension kit for collecting tank	73351731
HOMA 2 Poles earth leakage circuit breaker Fi 16/0,03 A	1561160
Battery for mains-independent operation	1952214
ServCom controller for monitoring of operation data (hours, no. of starts, failures etc.) and adjustment of pump liquid levels in the tank	1964450

Dimensions

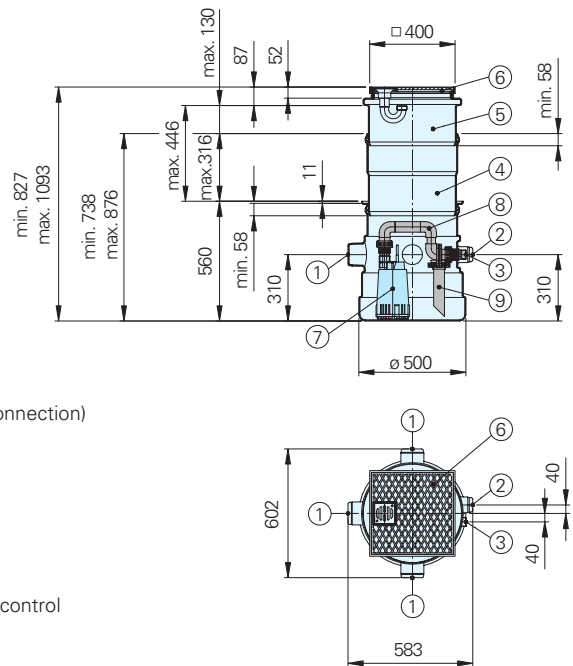
Saniquick UFT (Chromatic C235W)



- ① (3x) Inlet DN 100 horizontal
- ② DN70 (Air vent and cable duct)
- ③ BSP 1¹/₄" F (Pump discharge connection)
- ④ Extension kit
- ⑤ Adjustable frame
- ⑥ Access cover with floor drain
- ⑦ Pump (2x)
- ⑧ Installation kit
- ⑨ Connection for pneumatic level control

all dimensions in mm

Saniquick UFT (Chromatic C235W) with installation kit



motralec

4 rue Lavoisier . ZA Lavoisier . 95223 HERBLAY CEDEX
Tel. : 01.39.97.65.10 / Fax. : 01.39.97.68.48

Demande de prix / e-mail : service-commercial@motralec.com

www.motralec.com

HOMA
P U M P T E C H N O L O G Y