

# omni GRIND™ CENTRIFUGAL GRINDER PUMPS *plus*<sup>+</sup>

The Omni Grind Plus provides heads up to 200' and flows to 28gpm. With the high head capabilities of a progressive cavity pump and the long life of Barnes centrifugal grinder pumps, the Omni Grind Plus is truly a universal grinder pump for single family residents.

## Superior Performance

- Two stage pump design provides high head capability
- Installed with the Barnes ESPS, (Environmentally Sealed Pressure Switch) problems with grease build up are nonexistent
- Start and run capacitors are located in the motor housing so no expensive control panel required
- UL and CSA listed to assure quality and electrical safety
- 1 1/4" NPT vertical connection in removable discharge flange makes installation a breeze

## Long Life

- Centrifugal grinder pumps recognized for reliable and trouble free operation
- Recessed impeller creates a vortex action for minimal component wear
- Two stage design allows pump to run continuously at high or low heads
- 100,000 hour L-10 rated angular contact bearing easily handles any pump load
- Silicon carbide, single mechanical seals hold up to damaging grit
- Oil filled motor for superior cooling
- Built in, automatic resetting overload protection extends motor life
- Exclusive Slicerator has superior grinding action which eliminates jams



## Efficient

- Hydraulic performance superior to 1hp PC pump  
WITH COMPARABLE POWER CONSUMPTION



Manual

Automatic with  
integral check valve  
& anti-siphon valve

U.S. Patent 7,357,341    
E81854 C US

**motralec**

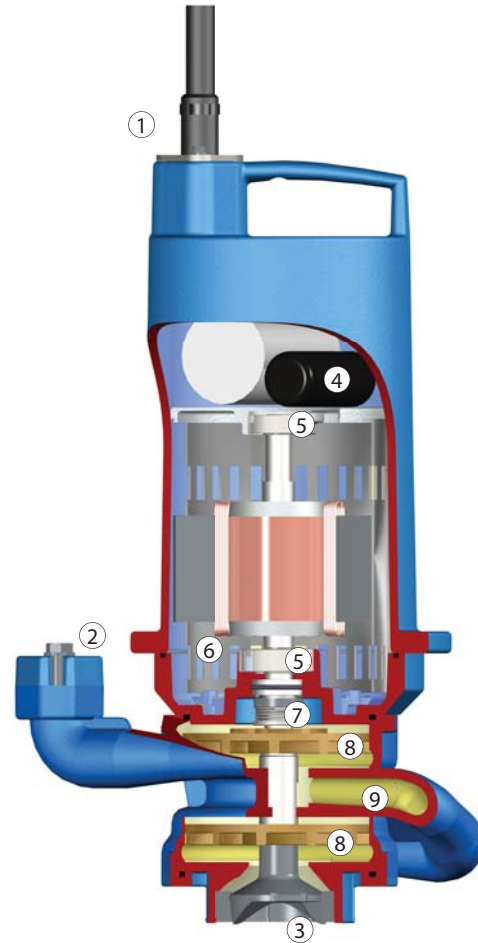
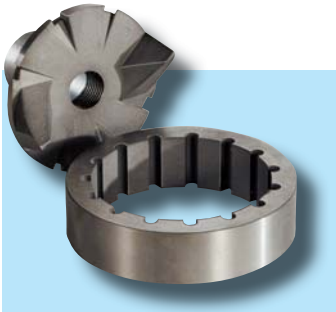
4 rue Lavoisier . ZA Lavoisier . 95223 HERBLAY CEDEX  
Tel. : 01.39.97.65.10 / Fax. : 01.39.97.68.48  
Demande de prix / e-mail : service-commercial@motralec.com

[www.motralec.com](http://www.motralec.com)

**CRANE** PUMPS & SYSTEMS

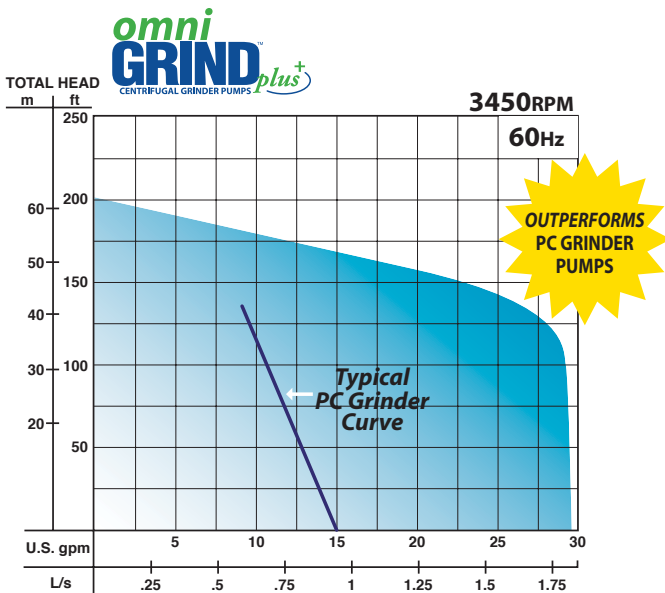
**Exclusive Slicerator™**

The staggered slicing action of the grinder radial cutter dramatically reduces the torque requirement of the motor, cuts with less horsepower, and increases the unit's efficiency. Eliminates clogging with particularly troublesome objects such as plastic, rubber, sanitary napkins, disposable diapers and cloth items.



**Omni Grind Plus Features**

1. Quick disconnect cord
2. Threaded discharge flange
3. Exclusive Slicerator
4. Integral capacitors for start and run
5. Angular contact bearings 100,000 hour L-10 rating
6. Oil filled motor with overload protection
7. Silicon carbide mechanical seal for long life
8. Vortex impellers for solids handling
9. Interstage passage



**CRANE** PUMPS & SYSTEMS

**motralec**

4 rue Lavoisier . ZA Lavoisier . 95223 HERBLAY CEDEX  
Tel. : 01.39.97.65.10 / Fax. : 01.39.97.68.48  
Demande de prix / e-mail : service-commercial@motralec.com

[www.motralec.com](http://www.motralec.com)