

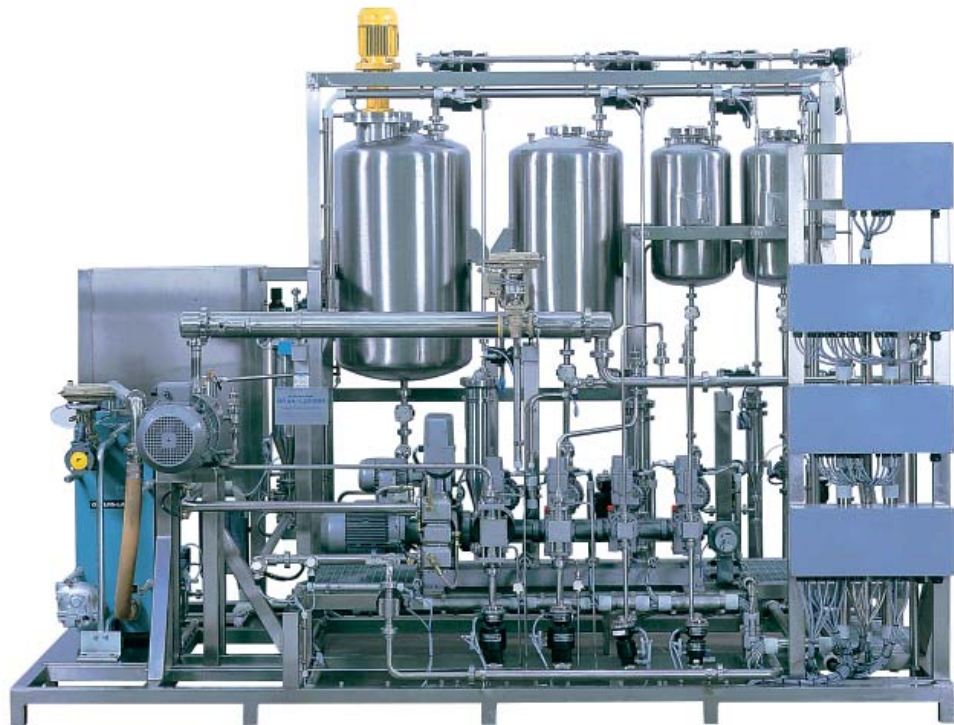


AutoBlend Systems

Body Lotion Production

Advantages

- Continuous production enables sterile operation and direct transfer to the filling station.
- No air introduction to finished product.
- Constant product quality.
- Flow-through cleaning and sterilization with automatic CIP-system.



motralec

4 rue Lavoisier . ZA Lavoisier . 95223 HERBLAY CEDEX
Tel. : 01.39.97.65.10 / Fax. : 01.39.97.68.48

Demande de prix / e-mail : service-commercial@motralec.com

www.motralec.com

SPX®

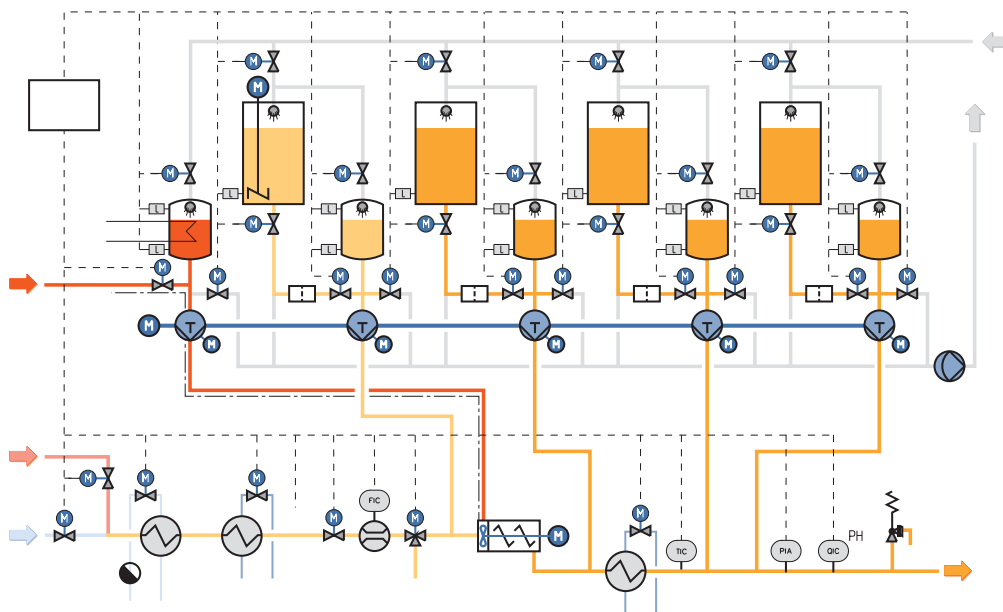
Continuous production of high quality body lotion is achieved using a Bran+Luebbe metering and mixing system, incorporating emulsification with a Bran+Luebbe PENTAX mixer.

The end-product is cooled in a tube heat exchanger. The computer-controlled system uses both mass flowmeters and LIV stream monitoring. The aseptic design includes a CIP cleaning system.

Components

- 1 Type KH metering pump with electric delivery volume control, plunger pump head.
- 4 Type P metering pumps with electric delivery volume control, 4 plunger pump heads (1 pump head heated).
- 1 PENTEX dynamic mixer.

Simplified process diagram



- 3 pipe heat exchanger in sanitary design.
- 1 online mass flowmeter.
- 1 online pH-analyzer.
- 1 online viscosity analyzer.
- Automatic valves.

Automation

- Fully automatic process control.
- Recipe and product management with data report.
- Automatic product monitoring with control loop.
- Automatic shut down if any ingredient runs out.

SPX[®]
WHERE IDEAS MEET INDUSTRY



motralec

4 rue Lavoisier . ZA Lavoisier . 95223 HERBLAY CEDEX
Tel. : 01.39.97.65.10 / Fax. : 01.39.97.68.48
Demande de prix / e-mail : service-commercial@motralec.com
www.motralec.com