



**SPX** Process Equipment

# Sanitary Markets

Metering Pumps and  
Process Systems

**motralec**

4 rue Lavoisier . ZA Lavoisier . 95223 HERBLAY CEDEX

Tel. : 01.39.97.65.10 / Fax. : 01.39.97.68.48

Demande de prix / e-mail : [service-commercial@motralec.com](mailto:service-commercial@motralec.com)

[www.motralec.com](http://www.motralec.com)



# BRAN+LUEBBE

## Offers Your Company The Complete Solution!

*Bran+Luebbe isn't simply an equipment supplier - we are an equipment manufacturer, an engineering resource, an experienced fabricator and a strongly committed aftermarket service provider.*

*We are a supply partner with virtually all major corporations.*



### ENGINEERING DESIGN

- Staff engineers work in unison with designers to ensure comprehensive design and support level documentation and detailed drawing packages.
- 3-D modeling utilized to guarantee the best results.
- Constantly aware of changes in technologies, Bran+Luebbe engineers are positioned to offer clients the most complete and cost-effective solutions to the most complex situations.



### PROJECT MANAGEMENT

- From inception to completion, Bran+Luebbe Project Engineers thoroughly manage project milestones on each job and assure that every phase is brought to a successful conclusion.



### MANUFACTURING

- With single-source responsibility fabrication, welding and finishing, we guarantee that both our equipment and packaged systems are delivered with the highest industry standards.
- ISO-9001 certified, Bran+Luebbe controls the purchase and receipt of all buy-out equipment to ensure compliance with all applicable specifications, requisite standards and systems compatibility.



### TESTING & AFTERMARKET SUPPORT

- Our equipment and skid packages are subjected to both in-house hydrostatic and functional, performance testing.
- Worldwide manufacturing & warehousing in:
  - Delavan, Wisconsin - Hqt.
  - Rochester, New York
  - Norderstedt, Germany
  - Baton Rouge, Louisiana
  - Brixworth, England
  - Singapore, Malaysia
  - Houston, Texas
  - Sao Paulo, Brazil

B+L maintains an inventory of more than 40,000 standard components. Most of these locations include factory trained, field-service personnel.

**...from start to finish, we are your partner in success.**

# Unparalleled Experience and Dedication Worldwide

Bran+Luebbe's powerful presence dominates the Sanitary Market. Globally, our installed base is equally strong – and a testimony to the competence of our engineering, the depth of our experience, the reliability of our machinery, and our commitment to aftermarket service and support.

These factors have led us to become one of the most respected and reliable suppliers in these markets.

## Demanding Applications Require Process System Solutions

FOOD & BEVERAGE APPLICATIONS	PERSONAL CARE APPLICATIONS
<ul style="list-style-type: none"> <li>■ Alcohol Dilution</li> <li>■ Applesauce Blending</li> <li>■ Beer Finings Injection</li> <li>■ Candy Flavor and Color Proportioning</li> <li>■ Canned Fruit and Vegetable Liquors</li> <li>■ Cheese Whey</li> <li>■ Continuous Bourbon Blending</li> <li>■ Continuous Brandy Production</li> <li>■ Cottage Cheese Color Injection</li> <li>■ Cough Drop Premix</li> <li>■ Diced Tomato Metering</li> <li>■ Diluted Hops Addition to Beer</li> <li>■ Fruit Juice Blending</li> <li>■ High-Fructose Corn Syrup Dilution</li> <li>■ Ice Cream Blending</li> <li>■ Jam/Jelly Blending</li> <li>■ Ketchup, Sauce, Salsa Blending</li> <li>■ Maple Syrup Dilution</li> <li>■ Margarine Blending</li> <li>■ Mayonnaise/Salad Dressing Blending</li> <li>■ Milk Metering</li> <li>■ Milkshake Syrup Blending</li> <li>■ Oils and Shortening</li> <li>■ Orange Juice Blending</li> <li>■ Pet Food Additive Injection</li> <li>■ Pickle Juice Blending</li> <li>■ Pizza Sauce Blending</li> <li>■ Preparation of Champagne for Secondary Fermentation</li> <li>■ Soft Drink Production</li> <li>■ Snack Food Additive Injection</li> <li>■ Spaghetti Sauce Blending</li> <li>■ Sports Drink Dosing and Mixing</li> <li>■ Tomato Paste and Puree Production</li> <li>■ Whipping Cream Proportioning</li> <li>■ Yogurt Blending</li> </ul>	<ul style="list-style-type: none"> <li>■ Baby Oil</li> <li>■ Bar Soap Manufacturing</li> <li>■ Cologne</li> <li>■ Custom Pilot Systems</li> <li>■ Deodorant/Anti-Perspirants</li> <li>■ Disinfectants</li> <li>■ Fabric Softener</li> <li>■ Gel Shave Cream</li> <li>■ Hair Conditioner</li> <li>■ Hair Setting Gel</li> <li>■ Hairspray</li> <li>■ Intravenous Emulsions</li> <li>■ Liquid Cosmetics</li> <li>■ Liquid Household Cleaners</li> <li>■ Mouthwash</li> <li>■ Pill Coating Slurry</li> <li>■ Prescription Tablet Coatings</li> <li>■ Shampoo</li> <li>■ Skin Care Lotions</li> <li>■ Soap Additives</li> <li>■ Surfactant Dilution</li> <li>■ Transdermal Patches</li> </ul>
<div style="background-color: #0056b3; color: white; padding: 2px 5px; display: inline-block; font-weight: bold;">FEATURE</div> <div style="background-color: #0056b3; color: white; padding: 5px 10px; display: inline-block; font-weight: bold; margin-left: 5px;">LIQUID INGREDIENT INJECTION</div>	
<ul style="list-style-type: none"> <li style="width: 50%;">■ Colors</li> <li style="width: 50%;">■ Proteins</li> <li style="width: 50%;">■ Fragrances</li> <li style="width: 50%;">■ Chelants</li> <li style="width: 50%;">■ Flavors</li> <li style="width: 50%;">■ Preservatives</li> <li style="width: 50%;">■ Opacifiers</li> <li style="width: 50%;">■ Miscellaneous Additives</li> <li style="width: 50%;">■ Brighteners</li> <li style="width: 50%;">■ Vitamins</li> </ul>	
	



# WHY SPX PROCESS

## With SPX Process Equipment As



**LIQUID INGREDIENT INJECTION**

- A system that will accurately meter small quantities of liquid ingredients into a pipeline or batch tank. The system is ideal for addition of colors, flavors and other ingredients.



**WAUKESHA CHERRY-BURRELL**

- WCB's traditional "Can-Do Pump". Versatile in application, its reliability has made it the industry standard worldwide for over 50 years. Easy cleaning in both CIP and COP models with pressures up to 500 psi. In addition, pumps can be remanufactured. WCB also offers a wide range of centrifugal pumps, valves, fittings, heat exchangers and dispersion equipment.

- A Bran+Luebbe yogurt/whole fruit blending system proportions the fruit accurately, and blends it thoroughly into the yogurt base. Less fruit is required to achieve the same consistency produced by batch mixing methods.



**YOGURT BLENDING SYSTEM**

- World Class Fluid Handling
- System Design and D
- Turnkey Project Management ar



**PROCESS SYSTEM DESI**

- A Bran+Luebbe continuous mayonnaise/salad dressing processing systems eliminate complex valve and pipe arrangements, and the large process tank areas associated with batch processing. The system reduces both cost and waste by producing accurate and consistent finished products.

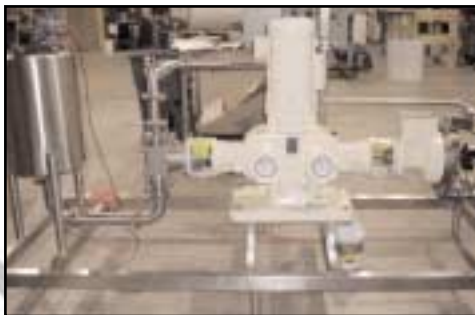


**MAYO/SALAD DRESSING PROCESSING**

# ESS EQUIPMENT?

Your Partner, You Have Access To:

ing and Mixing Equipment  
Development Expertise  
nd Aftersales Support - Worldwide



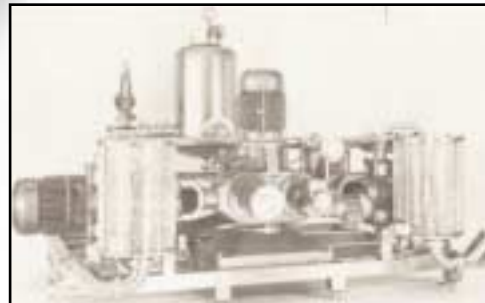
SHAVING GEL  
HYDROCARBON BLENDING

- Utilizing an in-line system for hydrocarbon/gel proportioning and blending, in a sealed environment, eliminates foaming and maximizes hydrocarbon yield.



GN AND FABRICATION

- Our in depth processing knowledge and state-of-the-art design tools are used to combine quality components into fully featured packages that provide our customers with security, value for money and ultimately a more consistent and controllable process.



HIGH-ACTIVE  
SURFACTANT DILUTION

- High active material may be easily processed to a homogeneous low active solution on demand with a field proven dilution system. Advantages include stable high active storage, no gelling, fish-eyes or aeration, lower material purchase and transport cost.



LIGHTNIN

- LIGHTNIN SR Sanitary Mixers. Low-headroom, right angle drive with low center of gravity - tanks can be easily moved with the mixer in place. Smaller footprint for restricted head geometries on tanks ranging from 100 to 30,000 liters.



BRAN+LUEBBE USA



- Bran+Luebbe sets the standard for accuracy and reliability. 3A-Quick Release design pump heads for packed plunger and sealless double diaphragm pumps.

**Global Headquarters:**

**SPX Process Equipment, Delavan, WI USA**

**motralec**

4 rue Lavoisier . ZA Lavoisier . 95223 HERBLAY CEDEX

Tel. : 01.39.97.65.10 / Fax. : 01.39.97.68.48

Demande de prix / e-mail : [service-commercial@motralec.com](mailto:service-commercial@motralec.com)

**[www.motralec.com](http://www.motralec.com)**