

motralec

4 rue Lavoisier . ZA Lavoisier . 95223 HERBLAY CEDEX
Tel. : 01.39.97.65.10 / Fax. : 01.39.97.68.48
Demande de prix / e-mail : service-commercial@motralec.com
www.motralec.com

Chemical Injection for Oil & Gas



Metering & Process Pumps

Bran+Luebbe is the world's leading supplier of chemical dosing pumps and systems to aid the recovery of oil and gas, both off-shore and onshore.

With over 30 years' experience in the supply, installation and maintenance of these systems, Bran+Luebbe can offer a level of expertise unrivalled within today's world-wide industry.

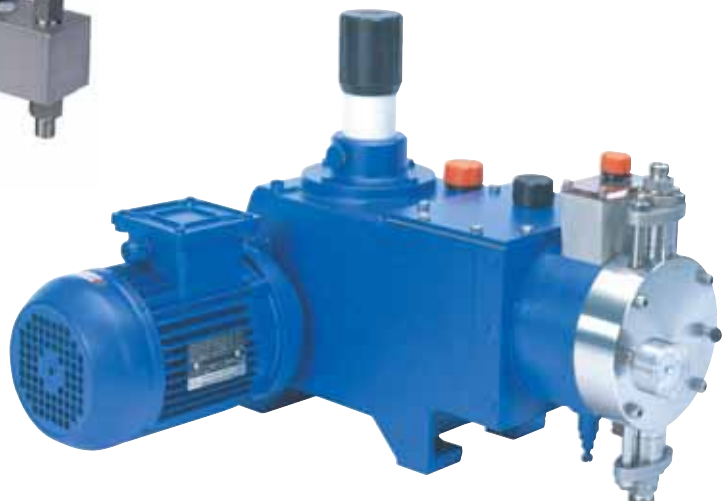
Bran+Luebbe metering pumps

Bran+Luebbe can offer metering pumps in a wide variety of design configurations and operating features such as :

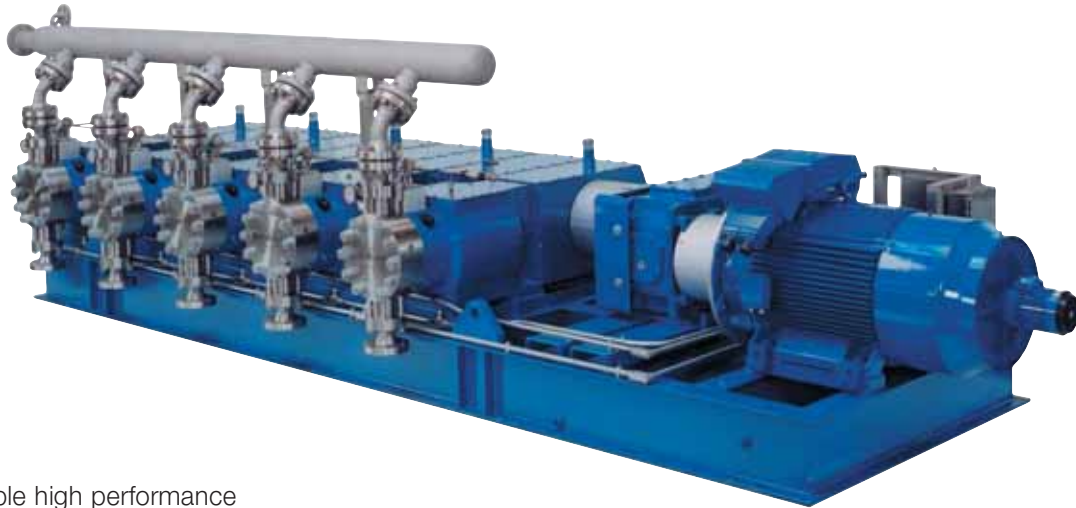
- Standard Plunger Pumps
- Leak Free Double Diaphragm Pumps
- Fixed or Variable Speed Drive
- Manual, Electric or Pneumatic Flowrate Control Options
- Horizontal and Vertical Combinations
- Simplex and Multiplex Range
- Modular Design Concept Permits Future Expansion
- High Accuracy



- High Repeatability
- Robustness and Durability
- Space Efficiency
- Low and High Pressure Capability up to 1000 Bar

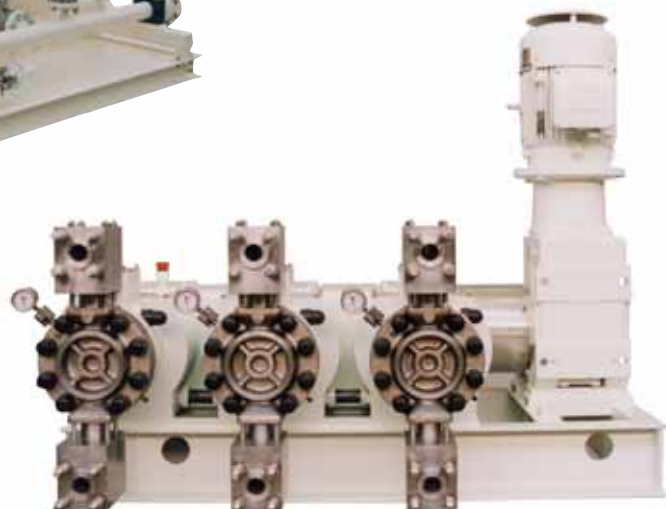


Bran+Luebbe NOVAPLEX Process Pumps



- Flexible high performance double diaphragm fixed stroke length process pumps
- Technology offers leak-free operation whilst providing benefits of high reliability, operating integrity and easy maintenance
- Modular construction allowing a combination of up to seven pumpheads on a single unit

- Ideal for toxic or chemically aggressive liquids and slurries
- Exclusive use of anti-friction bearings reduces energy consumption to almost theoretical minimum giving minimised life cycle costs
- Low and high pressure capability up to 1000 bar
- Wide Operating Capacity up to 100 m³/hr



Chemical Injection Units

Within the Oil and Gas Industry, the requirements for Chemical Injection Packages are very diverse depending on the application, location, number of chemicals, multi-point injection,

increases in production output and changes in production conditions.

By utilising its wealth of experience and expertise, Bran+Luebbe is capable of

designing, manufacturing, testing and certifying chemical injection systems to meet the specific customer and industry needs.

Examples of the types of packages which demonstrate the flexibility and versatility of Bran+Luebbe equipment are :



Basic injection packages.

Single chemical/single injection point.

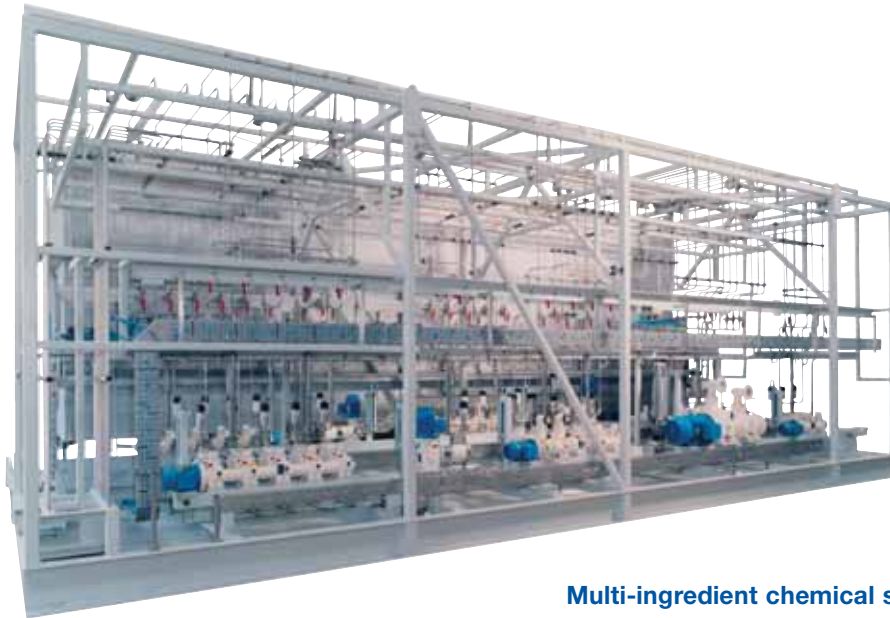
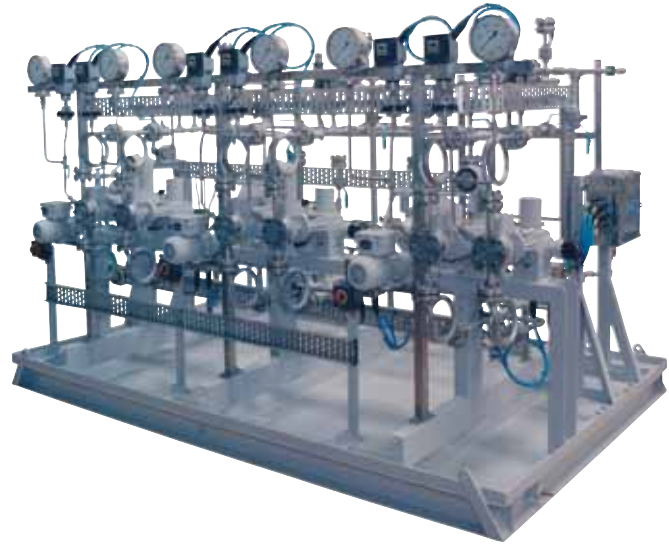


Multi-pumphead skids.

More than one chemical/injection point.

Multi-pump systems.

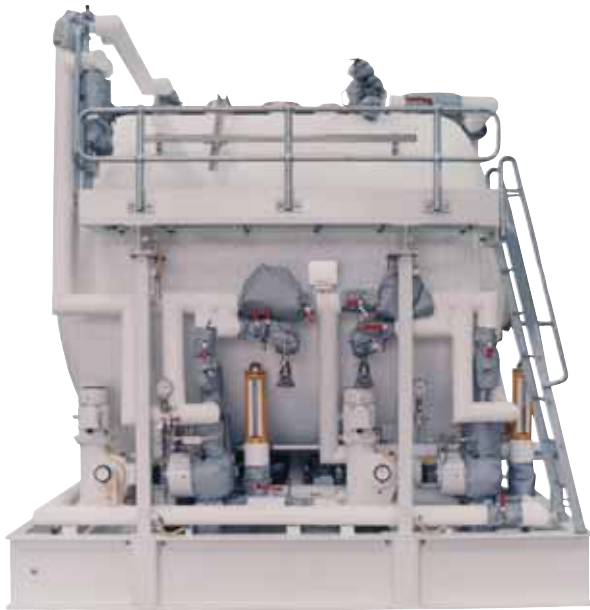
Similar to multi-pumphead skids, with facility of one or more additional pumps.



Multi-ingredient chemical storage and pumping packages

Major Clients

- | | | | |
|-----------------|-------------------|----------------|------------------|
| ■ ABB | ■ BP | ■ Kerr McGee | ■ Shell |
| ■ ADCO | ■ British Gas | ■ Marathon | ■ SLP |
| ■ ADMA-OPCO | ■ Chevron Texaco | ■ NIOC | ■ Statoil |
| ■ AIOC | ■ Conoco Phillips | ■ Norsk Hydro | ■ Talisman |
| ■ Aker Kvaerner | ■ Exxon Mobil | ■ NPCC | ■ ZADCO |
| ■ Amec | ■ Halliburton | ■ QGPC | ■ Total Fina Elf |
| ■ Amerada Hess | ■ Hamilton Oil | ■ Saudi ARAMCO | ■ Wood Group |



The benefits of Bran+Luebbe's package approach

- Single source - single accountability
- Purpose designed
- Space efficient
- Minimise on-site installation
- Fast and easy to operate and maintain
- Fully tested, proven and certified before installation
- Long term service support
- Peace of mind, dealing with the most professional company in the business

First Point Assessment

Bran+Luebbe strives to obtain industry approvals for its products and services, which is why it is proud to highlight its registration on the First Point Assessment database.

First Point Assessment Limited (FPAL) was established by the international oil and gas industry with the prime objective of identifying opportunities for cost reduction and performance improvement throughout the supply chain.

Bran+Luebbe's Oil and Gas Department has an established system that has been providing FPAL with performance feedback for several years.

In addition to this, the Company has now successfully completed a capability profile that is available to subscribers, which include the likes of BP, Shell, Amec, Halliburton, Statoil and many others, on the FPAL website.



Applications

- | | |
|------------------------|-----------------------------|
| ■ Biocides | ■ Oxygen Scavenging |
| ■ Chemical Dilutants | ■ Polyelectrolytes |
| ■ Corrosion Inhibitors | ■ Pour Point Depressants |
| ■ Demulsifiers | ■ Scale Inhibitors |
| ■ Glycol | ■ Water Treatment Chemicals |
| ■ Hypochlorite | ■ Wax Inhibitors |
| ■ Methanol | |



Solar Powered Packages

- Completely self contained including solar panels and battery back-up
- Typical power consumption of motor for 15 l/hr x 250 bar operating pressure will only be 160 watts



- Minimum friction losses giving:
 - High reliability, high efficiency
 - Low maintenance/ low life cycle costs
- Environmentally friendly
- Typical applications :
 - Remote wellhead locations (Onshore & Offshore)
 - Water treatment plants

Flow Control Valve Panels

- Flow distribution panels using self regulating injection metering valves
- Multi-injection points, each individually adjustable with either a dedicated or common flow meter
- More than one chemical can be accommodated
- Duty/standby pumps recommended per chemical on main package
- Panels supplied as stand-alone or incorporated onto the main injection package



**Global Headquarters: SPX Process Equipment,
Delavan, WI USA**

Your local contact

motralec

4 rue Lavoisier . ZA Lavoisier . 95223 HERBLAY CEDEX

Tel. : 01.39.97.65.10 / Fax. : 01.39.97.68.48

Demande de prix / e-mail : service-commercial@motralec.com

www.motralec.com