

Fiche produit Motralec Ziehl Abegg RD S Eclblue RD13S 4IP - fiche technique | Motralec

■ DEMANDE DE PRIX RAPIDE : <https://www.motralec.com/demandeContact>

www.motralec.com / service-commercial@motralec.com / 01.39.97.65.10

# RD..S-ECblue

for single phase alternating current, 200-240 V

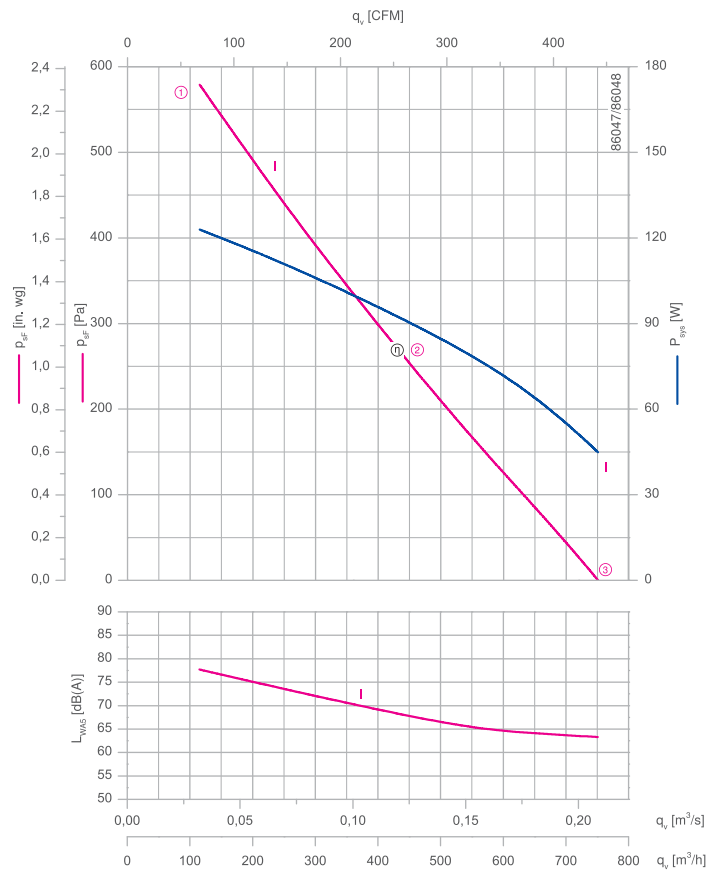
RD13S-4IP



### Description

Motor technology: EC  
 Rated voltage  $U_N$ : 1-200-240 V\*  
 Rated frequency  $f_N$ : 50/60 Hz\*  
 Input power  $P_{sys}$ : 150 W\*  
 Rated current  $I_N$ : 1.70-1.40 A\*  
 Rated speed  $n_N$ : 3400 min<sup>-1</sup>\*  
 Thermal class: THCL155\*  
 Min. permitted ambient temperature  $t_{a, min}$ : -30 °C\*\*\*  
 Max. permitted ambient temperature  $t_{a, max}$  at  $n_N$ : 60 °C  
 Electrical connection: Integrated controller with variable cable  
 Balancing quality: G 6,3  
 Degree of protection : IP54  
 Motor protection: integrated active temperaturemanagement  
 Impeller : Galvanized sheet metal, uncoated  
 Conformity: CE, UL  
**ErP-data**  
 Not subject to the regulations of ErP directive ( $P_i < 125$  W)  
 \*Rated data  
 \*\*\* Continuous operation with occasional starts (S1) according to DIN EN 60034-1:2011-02. Occasional starting between -30 °C and -25 °C is permissible. Continuous operation below -25 °C only with special bearings for refrigeration applications on request.

Characteristic curve

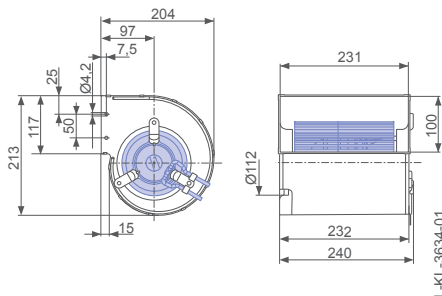


Measured in housing from ZIEHL-ABEGG.

Connection diagram 1360-404 Page 251  
 Airflow direction A

### Dimensions mm

Fan with housing double inlet, without flange, in installation position H



L-KL-3634-01

Type	Characteristic curve	Speed	Operating point	Current	Input power	Suction side sound power level
		n min <sup>-1</sup>		I A	P <sub>sys</sub> W	L <sub>WA5</sub> dB(A)
RD13S-4IP.Z8.2R	I	3200	①	1.15	120	78
		2270	②	0.86	90	68
		1040	③	0.46	44	63

Current values determined at 230V

## Fan ordering information

Design RD (without flange)

Fitting position H



Type **RD13S-4IP.Z8.2R**

Article no. **175578**

Weight kg 3.00

Information

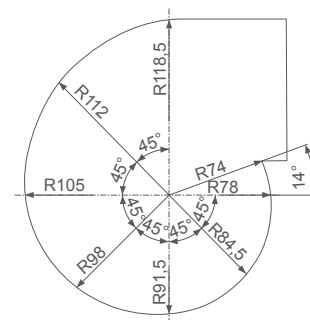
Oil transformer cooling

Dry transformer cooling

System components

Control technology

Appendix



L-KL-2950-26

ziehl-abegg.com



181

Fiche produit Motralec Ziehl Abegg RD S Eclue RD13S 4IP - fiche technique | Motralec

■ **DEMANDE DE PRIX RAPIDE** : <https://www.motralec.com/demandeContact>

## Besoin d'un prix ou d'un conseil technique ?

Ventilateur Ziehl Abegg RD S ECBLUE RD13S 4IP



4,7/5 . +600 avis Google

- Devis rapide et conseil technique par nos spécialistes
- Plus de 200 000 références et 30 marques distribuées
- Vente, réparation, bobinage et SAV en atelier
- Livraison partout en France, accompagnement avant et après-vente

Voir la gamme Ziehl Abegg sur notre site :

[www.motralec.com/.../ziehl-abegg](http://www.motralec.com/.../ziehl-abegg)

**DEMANDER UN PRIX >**