

Fiche produit Motralec Ziehl Abegg N Series RH50N 4D - fiche technique | Motralec

■ **DEMANDE DE PRIX RAPIDE** : <https://www.motralec.com/demandeContact>

www.motralec.com / service-commercial@motralec.com / 01.39.97.65.10

N-series AC technology
Type 50

Fans for railroad engineering
Type 20

N-series

for three phase alternating current, 4 pole

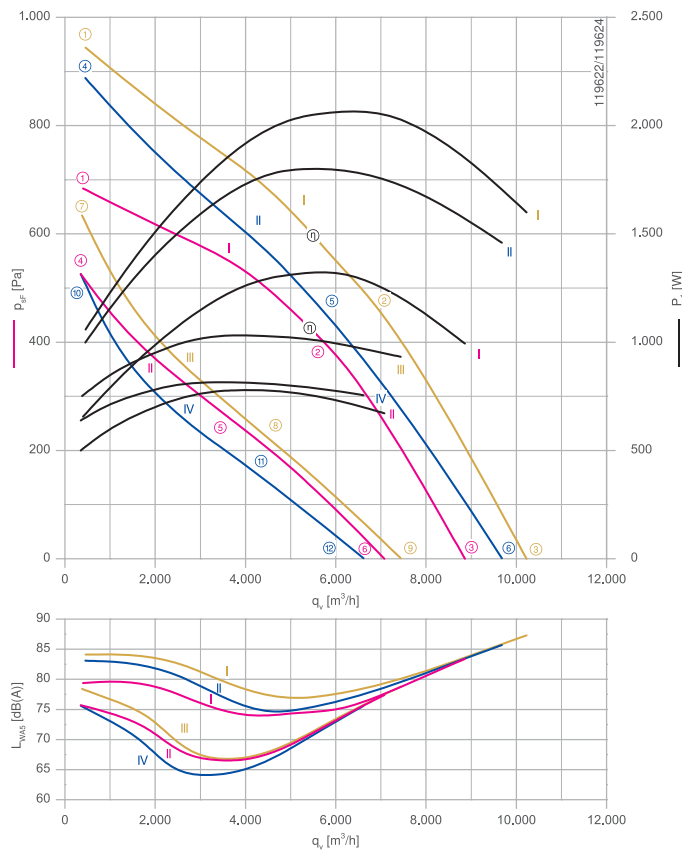
RH50N-4D



Description

Motor technology: AC
 Rated voltage U_N :
3- 230/400 V (Δ/Y) | 3-230/400 V (Δ/Y) | 3-265/460 V (Δ/Y) *
 Rated frequency f_N : **50 Hz | 60 Hz | 60 Hz***
 Input power P_i :
1.30 kW | 1.80 kW | 2.10 kW*
 Rated current I_N :
4.50/2.60 A | 5.70/3.30 A | 5.90/3.40 A*
 Rated speed n_N :
1300 min⁻¹ | 1360 min⁻¹ | 1460 min⁻¹*
 Starting current I_A : **16.00/9,50 A | 14,00/8,00 A | 17,00/9,50 A**
 Current increase ΔI : **5 % | 0 % | 0 %**
 Thermal class: THCL155*
 Min. permitted ambient temperature $t_{R(min)}$: **-40 °C*****
 Max. permitted ambient temperature $t_{R(max)}$:
70 °C | 55 °C | 55 °C
 Electrical connection: Supply cable side, 105cm
 Degree of protection : IP54
 Motor protection: thermal contact
 Impeller : aluminium, unpainted
 Motor: Aluminium, 1 coat paint, pebble grey
 Conformity: CE
 * Rated data
 *** Continuous operation with occasional starts (S1) according to DIN EN 60034-1:2011-02. Occasional starting between -40 °C and -25 °C is permissible. Continuous operation below -25 °C only with special bearings for refrigeration applications on request.

Characteristic curve

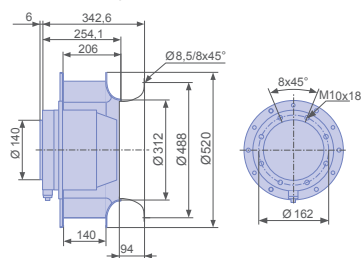


Measured with inlet ring, without guard grille according to ISO 5801

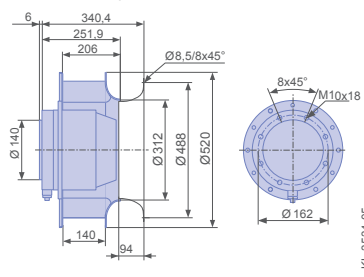
Inlet ring	00411857	RAL 7032 (pebble grey)	Page 302
Inlet ring	00411850	unpainted	
Connection diagram	1360-106XA		Page 327

Dimensions mm

Free-running motorized impeller RH in installation position H/Vu





Free-running motorized impeller RH in installation position H/Vo



Type	Characteristic curve	Voltage	Frequency	Operating point	Current	Input power	Speed	Suction side sound power level
		U V	f Hz		I A	P _i W	n min ⁻¹	L _{WAS} dB(A)
RH50N-4DK.6K.AR	I	400	50	①	1.75	660	1410	79
		400*		②	2.60*	1300*	1300*	75
		400		③	2.20	1000	1360	83
		230		④	1.60	500	1240	76
		230		⑤	2.50	780	970	67
		230		⑥	2.10	680	1090	77
	II	460	60	①	2.00	1050	1670	84
		460*		②	3.40*	2100*	1460*	79
		460		③	2.70	1600	1570	87
		400		④	1.95	1000	1620	83
		400*		⑤	3.30*	1800*	1360*	76
		400		⑥	2.70	1450	1480	86
III	265		⑦	2.10	760	1360	78	
	265		⑧	2.90	1050	990	67	
	265		⑨	2.60	940	1150	79	
IV	230		⑩	2.10	640	1240	76	
	230		⑪	2.70	820	880	65	
	230		⑫	2.50	760	1020	76	

*rated data

Fan ordering information

Design	RH*	RH*
Installation position	H/Vu	H/Vo
		
Type	RH50N-4DK.6K.AR	RH50N-4DK.6K.AR
Article no.	172507	175800
Weight kg	20.90	20.90
* inlet ring not included		

ziehl-abegg.com



189

Fiche produit Motralec Ziehl Abegg N Series RH50N 4D - fiche technique | Motralec

■ DEMANDE DE PRIX RAPIDE : <https://www.motralec.com/demandeContact>

Besoin d'un prix ou d'un conseil technique ?

Ventilateur Ziehl Abegg N SERIES RH50N 4D



4,7/5 . +600 avis Google

- Devis rapide et conseil technique par nos spécialistes
- Plus de 200 000 références et 30 marques distribuées
- Vente, réparation, bobinage et SAV en atelier
- Livraison partout en France, accompagnement avant et après-vente

Voir la gamme Ziehl Abegg sur notre site :

www.motralec.com/.../ziehl-abegg

DEMANDER UN PRIX >