

Fiche produit Motralec Ziehl Abegg M Series RH28M 4D - fiche technique | Motralec

■ **DEMANDE DE PRIX RAPIDE** : <https://www.motralec.com/demandeContact>

M-series AC technology
Size 280

Fans for railroad engineering
01/2017

M-series

for three phase alternating current, 4 pole

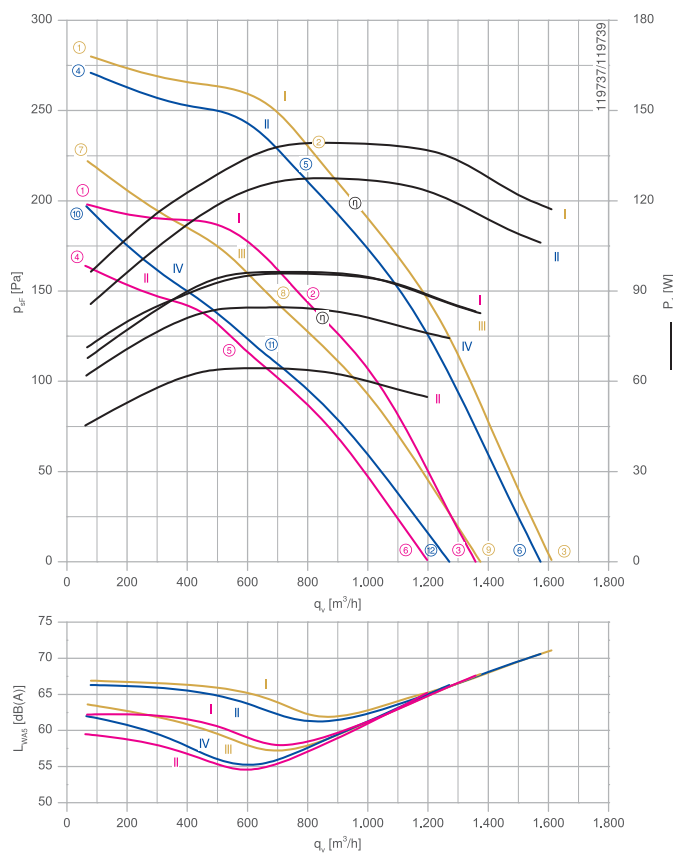
RH28M-4D



Description

Motor technology: AC
 Rated voltage U_N :
3- 230/400 V (Δ/Y) | 3-230/400 V (Δ/Y) | 3-265/460 V (Δ/Y) *
 Rated frequency f_N : **50 Hz | 60 Hz | 60 Hz***
 Input power P_i :
95 W | 130 W | 140 W*
 Rated current I_N :
0.42/0.24 A | 0.42/0.24 A | 0.44/0.25 A*
 Rated speed n_N :
1380 min⁻¹ | 1580 min⁻¹ | 1630 min⁻¹*
 Starting current I_A : **1.30/0.75 A | 1.20/0.70 A | 1.40/0.80 A**
 Current increase ΔI : **0 % | 0 % | 0 %**
 Thermal class: THCL155*
 Min. permitted ambient temperature $t_{R(min)}$: **-40 °C*****
 Max. permitted ambient temperature $t_{R(max)}$:
70 °C | 70 °C | 70 °C
 Electrical connection: Supply cable side, 105cm
 Degree of protection : IP54Z
 Motor protection: thermal contact
 Impeller : aluminium, unpainted
 Motor: Aluminium, 1 coat paint, pebble grey
 Conformity: CE
 * Rated data
 *** Continuous operation with occasional starts (S1) according to DIN EN 60034-1:2011-02. Occasional starting between -40 °C and -25 °C is permissible. Continuous operation below -25 °C only with special bearings for refrigeration applications on request.

Characteristic curve

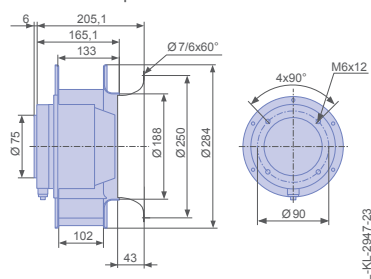


Measured with inlet ring, without guard grille according to ISO 5801

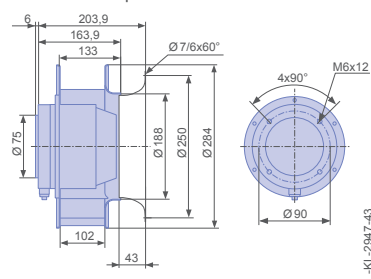
Inlet ring	00280734	RAL 7032	Page 303
		(pebble grey)	
Inlet ring	00275848	unpainted	
Connection diagram	1360-106XA		Page 327

Dimensions mm

Free-running motorized impeller RH in installation position H/Vu



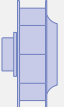

Free-running motorized impeller RH in installation position H/Vo



Type	Characteristic curve	Voltage	Frequency	Operating point	Current	Input power	Speed	Suction side sound power level	
		U V	f Hz		I A	P _i W	n min ⁻¹	L _{WAS} dB(A)	
RH28M-4DK.2A.1R	I	400	50	①	0.23	70	1430	62	
		400*		②	0.24*	95*	1380*	58	
		400		③	0.24	85	1410	68	
		230		④	0.15	46	1310	60	
		230		⑤	0.18	65	1180	55	
		230		⑥	0.16	55	1250	65	
	II	I	460	60	①	0.22	95	1700	67
			460*		②	0.25*	140*	1630*	62
			460		③	0.24	120	1670	71
		II	400		④	0.19	85	1680	66
			400*		⑤	0.24*	130*	1580*	62
			400		⑥	0.21	110	1630	71
III	265	⑦	0.17	70	1510	64			
	265	⑧	0.23	95	1330	57			
	265	⑨	0.20	85	1430	68			
IV	230	⑩	0.17	60	1430	62			
	230	⑪	0.23	85	1210	57			
	230	⑫	0.21	75	1320	66			

*rated data

Fan ordering information

Design	RH*	RH*
Installation position	H/Vu	H/Vo
		
Type	RH28M-4DK.2A.1R	RH28M-4DK.2A.1R
Article no.	172142	175229
Weight kg	3.30	3.30
* inlet ring not included		

Information

ZArail

Cpro-ECblue

C-ECblue

C series

N series

M series

FE2owlet

www.motralec.com / service-commercial@motralec.com / 01.39.97.65.10 221

Fiche produit Motralec Ziehl Abegg M Series RH28M 4D - fiche technique | Motralec

■ **DEMANDE DE PRIX RAPIDE** : <https://www.motralec.com/demandeContact>

Besoin d'un prix ou d'un conseil technique ?

Ventilateur Ziehl Abegg M SERIES RH28M 4D



4,7/5 . +600 avis Google

- Devis rapide et conseil technique par nos spécialistes
- Plus de 200 000 références et 30 marques distribuées
- Vente, réparation, bobinage et SAV en atelier
- Livraison partout en France, accompagnement avant et après-vente

Voir la gamme Ziehl Abegg sur notre site :

www.motralec.com/.../ziehl-abegg

DEMANDER UN PRIX >