

Fiche produit Motralec Ziehl Abegg M Series RH28M 2D - fiche technique | Motralec

■ **DEMANDE DE PRIX RAPIDE** : <https://www.motralec.com/demandeContact>

M-series AC technology  
Size 280

Fans for railroad engineering  
01/2017

# M-series

for three phase alternating current, 2 pole

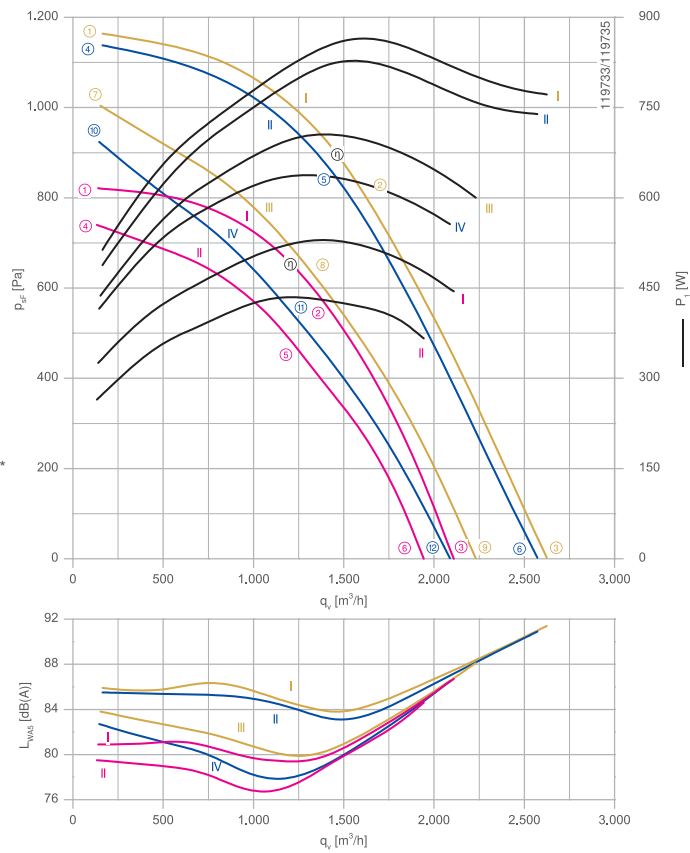
RH28M-2D



### Description

Motor technology: AC  
 Rated voltage  $U_N$ :  
**3- 230/400 V ( $\Delta/Y$ ) | 3-230/400 V ( $\Delta/Y$ ) | 3-265/460 V ( $\Delta/Y$ ) \***  
 Rated frequency  $f_N$ : **50 Hz | 60 Hz | 60 Hz\***  
 Input power  $P_i$ :  
**520 W | 820 W | 860 W\***  
 Rated current  $I_N$ :  
**1.90/1.10 A | 2.30/1.35 A | 2.30/1.35 A\***  
 Rated speed  $n_N$ :  
**2860 min<sup>-1</sup> | 3310 min<sup>-1</sup> | 3380 min<sup>-1</sup>\***  
 Starting current  $I_A$ : **13,00/7,50 A | 12,00/7,00 A | 14,00/8,00 A**  
 Current increase  $\Delta I$ : **20 % | 30 % | 30 %**  
 Thermal class: THCL155\*  
 Min. permitted ambient temperature  $t_{R(min)}$ : **-40 °C\*\*\***  
 Max. permitted ambient temperature  $t_{R(max)}$ :  
**70 °C | 70 °C | 70 °C**  
 Electrical connection: Supply cable side, 105cm  
 Degree of protection : IP54  
 Motor protection: thermal contact  
 Impeller : aluminium, unpainted  
 Motor: Aluminium, 1 coat paint, pebble grey  
 Conformity: CE  
 \* Rated data  
 \*\*\* Continuous operation with occasional starts (S1) according to DIN EN 60034-1:2011-02. Occasional starting between -40 °C and -25 °C is permissible. Continuous operation below -25 °C only with special bearings for refrigeration applications on request.

Characteristic curve

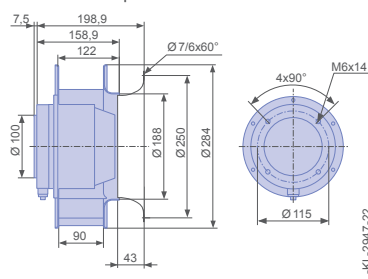


Measured with inlet ring, without guard grille according to ISO 5801

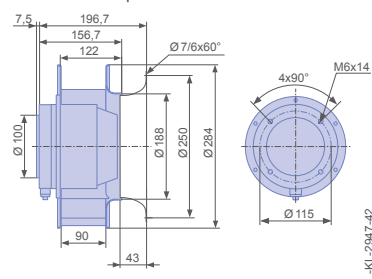
Inlet ring	00280734	RAL 7032	Page 303
		(pebble grey)	
Inlet ring	00275848	unpainted	
Connection diagram	1360-106XA		Page 327

### Dimensions mm

Free-running motorized impeller RH in installation position H/Vu



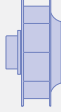

Free-running motorized impeller RH in installation position H/Vo



Type	Characteristic curve	Voltage	Frequency	Operating point	Current	Input power	Speed	Suction side sound power level
		U V	f Hz		I A	P <sub>i</sub> W	n min <sup>-1</sup>	L <sub>WAS</sub> dB(A)
RH28M-2DK.3I.2R	I	400	50	①	0.96	330	2920	81
		400*		②	1.10*	520*	2860*	80
		400		③	1.05	440	2890	87
	II	230		④	0.76	260	2780	80
		230		⑤	1.20	440	2590	78
		230		⑥	1.00	370	2670	85
	I	460	60	①	0.98	520	3490	86
		460*		②	1.35*	860*	3380*	84
		460		③	1.25	780	3410	91
	II	400		④	0.90	480	3450	86
		400*		⑤	1.35*	820*	3310*	83
		400		⑥	1.25	740	3340	91
III	265	⑦	1.05	440	3240	84		
	265	⑧	1.65	700	2920	80		
	265	⑨	1.40	600	3060	88		
IV	230	⑩	1.15	420	3110	83		
	230	⑪	1.75	640	2700	78		
	230	⑫	1.50	560	2870	87		

\*rated data

### Fan ordering information

Design	RH*	RH*
Installation position	H/Vu	H/Vo
		
Type	<b>RH28M-2DK.3I.2R</b>	<b>RH28M-2DK.3I.2R</b>
Article no.	<b>172141</b>	<b>175228</b>
Weight kg	9.00	9.00
* inlet ring not included		

Information

ZArail

Cpro-ECblue

C-ECblue

C series

N series

M series

FE2owllet

[www.motralec.com](http://www.motralec.com) / [service-commercial@motralec.com](mailto:service-commercial@motralec.com) / 01.39.97.65.10  219

Fiche produit Motralec Ziehl Abegg M Series RH28M 2D - fiche technique | Motralec

■ **DEMANDE DE PRIX RAPIDE** : <https://www.motralec.com/demandeContact>

## Besoin d'un prix ou d'un conseil technique ?

Ventilateur Ziehl Abegg M SERIES RH28M 2D



4,7/5 . +600 avis Google

- Devis rapide et conseil technique par nos spécialistes
- Plus de 200 000 références et 30 marques distribuées
- Vente, réparation, bobinage et SAV en atelier
- Livraison partout en France, accompagnement avant et après-vente

Voir la gamme Ziehl Abegg sur notre site :

[www.motralec.com/.../ziehl-abegg](http://www.motralec.com/.../ziehl-abegg)

**DEMANDER UN PRIX >**