

Fiche produit Motralec Ziehl Abegg Fe2Owlet FN080 SD 1 - fiche technique | Motralec

■ DEMANDE DE PRIX RAPIDE : <https://www.motralec.com/demandeContact>

Oil transformer cooling Fans for transformer cooling
www.motralec.com / service-commercial@motralec.com / 01.39.97.65.10

FE2owlet

for three phase alternating current, 6-6 pole

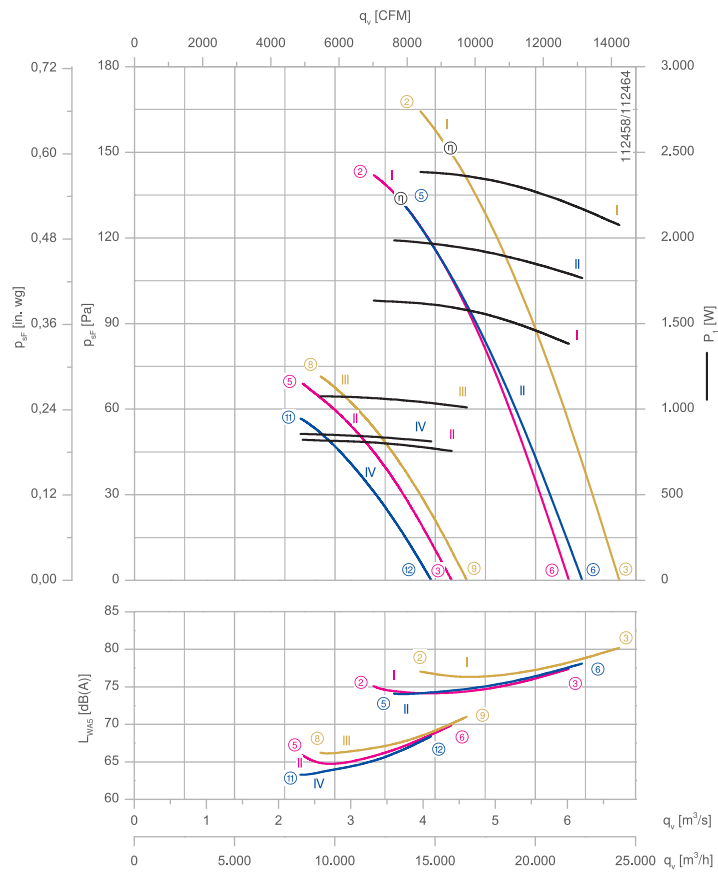
FN080-SD



Description

Motor technology: AC
 Rated voltage $U_N \pm 10\%$:
 3- 400 V (Δ/Y) | 3-400 V (Δ/Y) | 3-460 V (Δ/Y) *
 Rated frequency f_N : 50 Hz | 60 Hz | 60 Hz*
 Input power P_i :
 1.65/0.82 kW | 2.00/0.86 kW | 2.40/1.10 kW*
 Rated current I_N :
 3.50/1.55 A | 3.80/1.60 A | 4.00/1.75 A*
 Rated speed n_N :
 800/560 min⁻¹ | 800/520 min⁻¹ | 880/580 min⁻¹*
 Speed n at $p_{stat} = 0$ Pa:
 850/620 min⁻¹ | 870/580 min⁻¹ | 940/650 min⁻¹*
 Motor input power P at $p_{stat} = 0$ Pa:
 1400/760 W | 1750/820 W | 2100/1000 W*
 Air flow q_a at $p_{stat} = 0$ Pa:
 6.0/4.4 m³/s | 6.2/4.1 m³/s | 6.7/4.6 m³/s*
 Starting current I_A : 9.5/3.0 A | 8.5/2.6 A | 10/3.2 A
 Current increase ΔI : 0 % | 0 % | 0 %
 Thermal class: THCL155*
 Min. permitted ambient temperature $t_{R(min)}$: -40 °C***
 Max. permitted ambient temperature $t_{R(max)}$:
 70 °C | 50 °C | 40 °C
 Electrical connection: Terminal box
 Number of blades: 7
 Degree of protection : IP54
 Motor protection: thermal contact
 Blades: Aluminium, 2 coat paint, RAL 9006 (white aluminium)
 Rotor: Aluminium, 2 coat paint, RAL 9006 (white aluminium)
 * Rated data

Characteristic curve



Measured with nozzle for transformer cooling and guard grille on suction side in installation type A according to ISO 5801.

*** Continuous operation with occasional starts (S1) according to DIN EN 60034-1:2011-02. Occasional starting between -40 °C and -25 °C is permissible. Continuous operation below -25 °C only with special bearings for refrigeration applications on request.

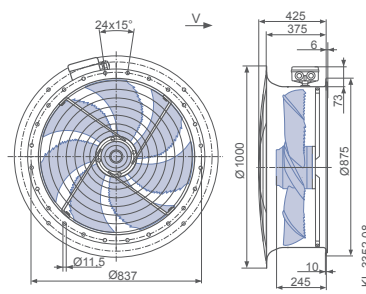
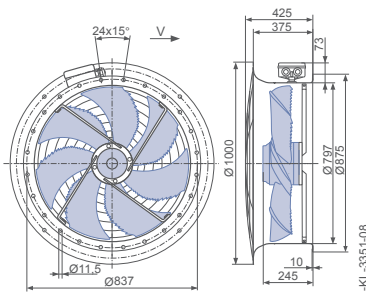
Connection diagram Page 252
 1360-108XA
 System components Page 184

Dimensions mm

Airflow direction

Design L - round full bell mouth, guard grille suction side with connection box


Design L - round full bell mouth, guard grille two-sided with connection box





Type	Connection	Characteristic curve	Voltage	Frequency	Operating point	Current	Input power	Speed	Suction side sound power level
			U V	f Hz		I A	P _i W	n min ⁻¹	L _{WAS} dB(A)
FN080-SDL.6N.V7P5	Δ	I	400*	50	②	3.50*	1650*	800*	75
					③	3.10*	1400*	850*	77
					⑤	1.55*	820*	560*	66
	Y	II	400*	60	⑥	1.45*	760*	620*	70
					②	4.20*	2400*	880*	77
					③	3.70*	2100*	940*	80
	Δ	I	460*	60	⑤	3.80*	2000*	800*	74
					⑥	3.40*	1750*	870*	78
					⑧	1.75*	1050*	580*	66
	Y	III	460*	60	⑨	1.65*	1000*	650*	71
					⑪	1.60*	860*	520*	63
					⑫	1.50*	820*	580*	68

*rated data

Fan ordering information

Airflow direction 

Design	L (guard grille suction side)	L (guard grille two-sided)
		
Type	FN080-SDL.6N.V7P5	FN080-SDL.6N.V7P5
Article no.	168895/10K1	168895/10K3
Weight kg	59.80	63.30

Control technology

Frequency inverters Fcontrol 3~	Motor protection units 3~	Electronic voltage controllers 3~
		
Page 208	Page 206	Page 218

ziehl-abegg.com

Fiche produit Motralec Ziehl Abegg Fe2Owlet FN080 SD 1 - fiche technique | Motralec

■ **DEMANDE DE PRIX RAPIDE** : <https://www.motralec.com/demandeContact>

Besoin d'un prix ou d'un conseil technique ?

Ventilateur Ziehl Abegg FE2OWLET FN080 SD 1



4,7/5 . +600 avis Google

- Devis rapide et conseil technique par nos spécialistes
- Plus de 200 000 références et 30 marques distribuées
- Vente, réparation, bobinage et SAV en atelier
- Livraison partout en France, accompagnement avant et après-vente

Voir la gamme Ziehl Abegg sur notre site :

www.motralec.com/.../ziehl-abegg

DEMANDER UN PRIX >