

Fiche produit Motralec Ziehl Abegg Fe2Owlet FN080 ND - fiche technique | Motralec

■ DEMANDE DE PRIX RAPIDE : <https://www.motralec.com/demandeContact>

Oil transformer cooling Fans for transformer cooling  
[www.motralec.com](http://www.motralec.com) / [service-commercial@motralec.com](mailto:service-commercial@motralec.com) / 01.39.97.65.10

# FE2owlet

for three phase alternating current, 12-12 pole

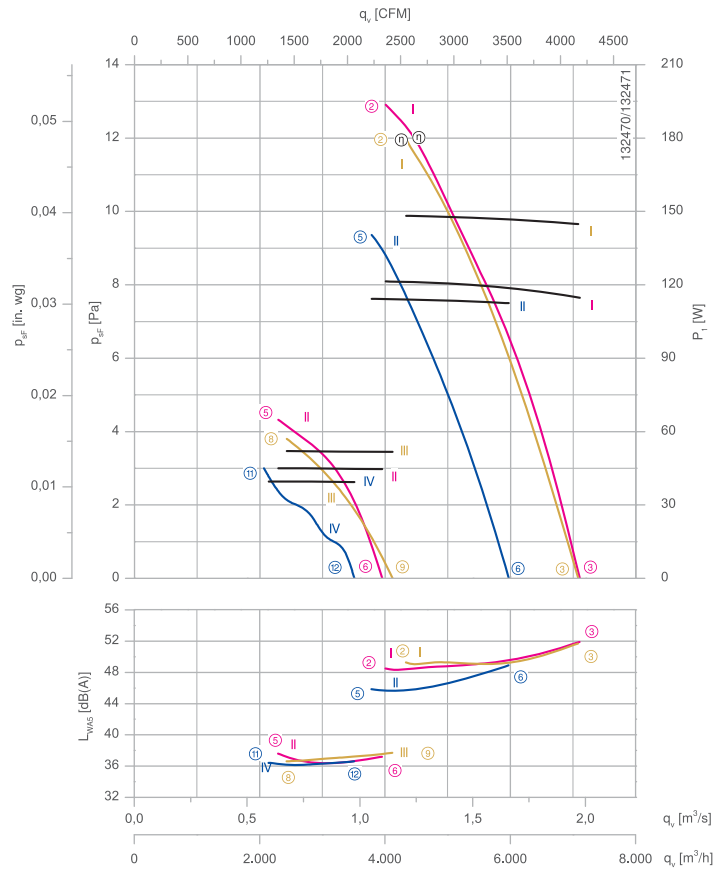
FN080-ND



### Description

Motor technology: AC  
 Rated voltage  $U_N \pm 10\%$  :  
 3~400 V ( $\Delta/Y$ ) | 3~400 V ( $\Delta/Y$ ) | 3~460 V ( $\Delta/Y$ ) \*  
 Rated frequency  $f_N$ : 50 Hz | 60 Hz | 60 Hz\*  
 Input power  $P_i$  :  
 120/45 W | 110/40 W | 150/50 W\*  
 Rated current  $I_N$  :  
 0.24/0.09 A | 0.24/0.09 A | 0.27/0.10 A\*  
 Rated speed  $n_N$  :  
 250/150 min<sup>-1</sup> | 210/120 min<sup>-1</sup> | 250/140 min<sup>-1</sup>\*  
 Speed n at  $p_{stat} = 0$  Pa:  
 290/160 min<sup>-1</sup> | 240/140 min<sup>-1</sup> | 280/160 min<sup>-1</sup>\*  
 Motor input power P at  $p_{stat} = 0$  Pa:  
 110/45 W | 110/40 W | 140/50 W\*  
 Air flow  $q_a$  at  $p_{stat} = 0$  Pa:  
 2.0/1.1 m<sup>3</sup>/s | 1.7/1.0 m<sup>3</sup>/s | 2.0/1.1 m<sup>3</sup>/s\*  
 Starting current  $I_A$ : 0.3/0.1 A | 0.26/0.09 A | 0.3/0.1 A  
 Current increase  $\Delta I$ : 0 % | 0 % | 0 %  
 Thermal class: THCL155\*  
 Min. permitted ambient temperature  $t_{R(min)}$ : -40 °C\*\*\*  
 Max. permitted ambient temperature  $t_{R(max)}$  :  
 70 °C | 70 °C | 70 °C  
 Electrical connection: Terminal box  
 Number of blades: 7  
 Degree of protection : IP54  
 Motor protection: thermal contact  
 Blades: Aluminium, 2 coat paint,  
 RAL 9006 (white aluminium)  
 Rotor: Aluminium, 2 coat paint,  
 RAL 9006 (white aluminium)  
 Conformity: CE  
**ErP-data**  
 Not subject to the regulations of ErP directive ( $P_i < 125$  W)  
 \* Rated data

### Characteristic curve



Measured with nozzle for transformer cooling and guard grille on suction side in installation type A according to ISO 5801.

\*\*\* Continuous operation with occasional starts (S1) according to DIN EN 60034-1:2011-02. Occasional starting between -40 °C and -25 °C is permissible. Continuous operation below -25 °C only with special bearings for refrigeration applications on request.

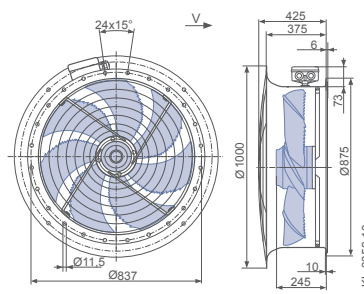
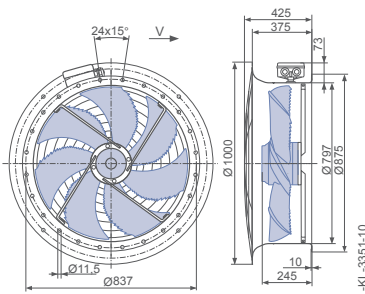
Connection diagram Page 252  
 1360-108XA  
 System components Page 184

### Dimensions mm

#### Airflow direction

Design L - round full bell mouth, guard grille suction side with connection box


Design L - round full bell mouth, guard grille two-sided with connection box





Type	Connection	Characteristic curve	Voltage	Frequency	Operating point	Current	Input power	Speed	Suction side sound power level			
			U V	f Hz		I A	P <sub>i</sub> W	n min <sup>-1</sup>	L <sub>WAS</sub> dB(A)			
FN080-NDL.6N.V7P5	Δ	I	400*	50	②	0.24*	120*	250*	49			
					③	0.23*	110*	290*	52			
					⑤	0.09*	46*	140*	37			
		Y			II	⑥	0.09*	44*	160*	37		
						Δ	I	②	0.27*	150*	250*	49
								③	0.26*	140*	280*	52
	Y	II	400*	⑤	0.24*	110*	210*	46				
				⑥	0.24*	110*	240*	49				
				III	460*	⑧	0.10*	50*	140*	37		
		⑨	0.10*			50*	160*	38				
		IV	400*			⑪	0.09*	40*	120*	36		
				⑫	0.09*	40*	140*	37				

\*rated data

## Fan ordering information

**Airflow direction** 

Design	L (guard grille suction side)	L (guard grille two-sided)
		
<b>Type</b>	FN080-NDL.6N.V7P5	FN080-NDL.6N.V7P5
<b>Article no.</b>	174933/10K1	174933/10K3
<b>Weight kg</b>	59.80	63.30

## Control technology

Frequency inverters Fcontrol 3~	Motor protection units 3~	Electronic voltage controllers 3~
		
Page 208	Page 206	Page 218

ziehl-abegg.com

Fiche produit Motralec Ziehl Abegg Fe2Owlet FN080 ND - fiche technique | Motralec

■ **DEMANDE DE PRIX RAPIDE** : <https://www.motralec.com/demandeContact>

## Besoin d'un prix ou d'un conseil technique ?

Ventilateur Ziehl Abegg FE2OWLET FN080 ND



4,7/5 . +600 avis Google

- Devis rapide et conseil technique par nos spécialistes
- Plus de 200 000 références et 30 marques distribuées
- Vente, réparation, bobinage et SAV en atelier
- Livraison partout en France, accompagnement avant et après-vente

Voir la gamme Ziehl Abegg sur notre site :

[www.motralec.com/.../ziehl-abegg](http://www.motralec.com/.../ziehl-abegg)

**DEMANDER UN PRIX >**