

Fiche produit Motralec Ziehl Abegg Fe2Owlet FN080 AD - fiche technique | Motralec

■ DEMANDE DE PRIX RAPIDE : <https://www.motralec.com/demandeContact>

Oil transformer cooling Fans for transformer cooling  
[www.motralec.com](http://www.motralec.com) / [service-commercial@motralec.com](mailto:service-commercial@motralec.com) / 01.39.97.65.10

# FE2owlet

for three phase alternating current, 8-8 pole

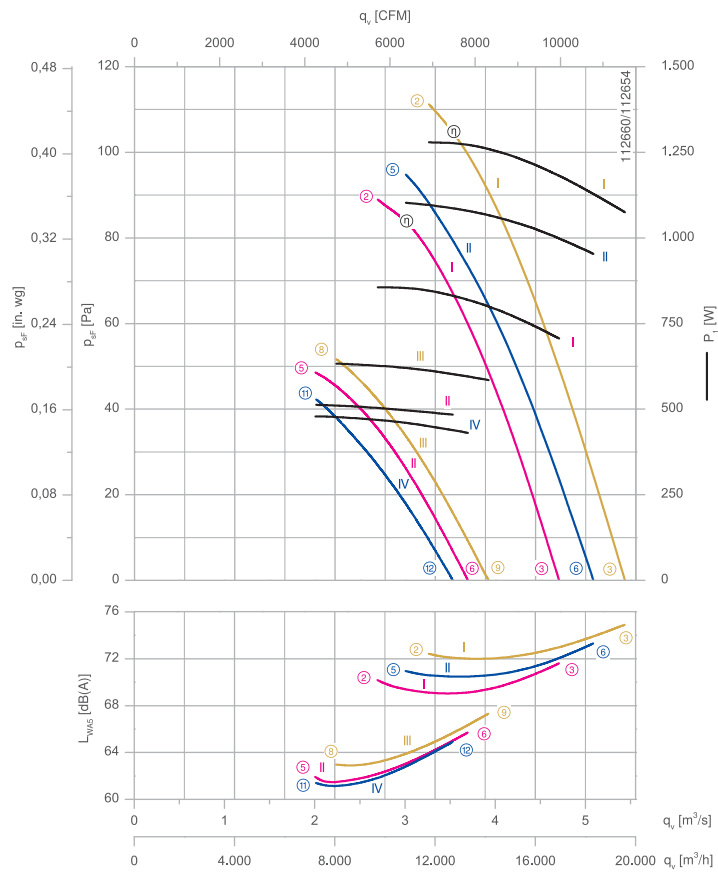
FN080-AD



### Description

Motor technology: AC  
 Rated voltage  $U_N \pm 10\%$  :  
 3- 400 V ( $\Delta/Y$ ) | 3-400 V ( $\Delta/Y$ ) | 3-460 V ( $\Delta/Y$ ) \*  
 Rated frequency  $f_N$ : 50 Hz | 60 Hz | 60 Hz\*  
 Input power  $P_i$  :  
 860/480 W | 1.10/0.52 kW | 1.30/0.64 kW\*  
 Rated current  $I_N$  :  
 2.10/0.98 A | 2.30/1.00 A | 2.50/1.10 A\*  
 Rated speed  $n_N$  :  
 650/490 min<sup>-1</sup> | 680/460 min<sup>-1</sup> | 740/510 min<sup>-1</sup>\*  
 Speed n at  $p_{stat} = 0$  Pa:  
 680/530 min<sup>-1</sup> | 730/510 min<sup>-1</sup> | 780/570 min<sup>-1</sup>\*  
 Motor input power P at  $p_{stat} = 0$  Pa:  
 700/440 W | 960/480 W | 1100/580 W\*  
 Air flow  $q_v$  at  $p_{stat} = 0$  Pa:  
 4.7/3.7 m<sup>3</sup>/s | 5.1/3.5 m<sup>3</sup>/s | 5.4/3.9 m<sup>3</sup>/s\*  
 Starting current  $I_A$ : 5.5/1.6 A | 4.6/1.4 A | 5.5/1.7 A  
 Current increase  $\Delta I$ : 0 % | 0 % | 0 %  
 Thermal class: THCL155\*  
 Min. permitted ambient temperature  $t_{R(min)}$ : -40 °C\*\*\*  
 Max. permitted ambient temperature  $t_{R(max)}$  :  
 70 °C | 70 °C | 65 °C  
 Electrical connection: Terminal box  
 Number of blades: 7  
 Degree of protection : IP54  
 Motor protection: thermal contact  
 Blades: Aluminium, 2 coat paint,  
 RAL 9006 (white aluminium)  
 Rotor: Aluminium, 2 coat paint,  
 RAL 9006 (white aluminium)  
 Conformity: ErP 2015, CE  
**ErP-data**  
 Efficiency  $\eta_{rated}$ : 33.5 %  
 Efficiency:  $N_{actual} = 40.3 / N_{target} = 40$ \*\*  
 \* Rated data  
 \*\*ErP 2015

### Characteristic curve



Measured with nozzle for transformer cooling and guard grille on suction side in installation type A according to ISO 5801.

\*\*\* Continuous operation with occasional starts (S1) according to DIN EN 60034-1:2011-02. Occasional starting between -40 °C and -25 °C is permissible. Continuous operation below -25 °C only with special bearings for refrigeration applications on request.

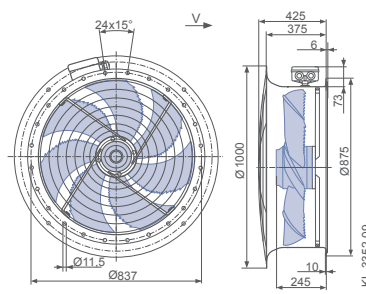
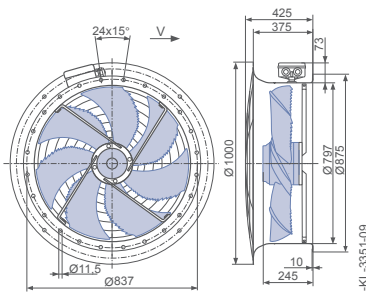
Connection diagram Page 252  
 1360-108XA  
 System components Page 184

### Dimensions mm

#### Airflow direction

Design L - round full bell mouth, guard grille suction side with connection box


Design L - round full bell mouth, guard grille two-sided with connection box





Type	Connection	Characteristic curve	Voltage	Frequency	Operating point	Current	Input power	Speed	Suction side sound power level			
			U V	f Hz		I A	P <sub>i</sub> W	n min <sup>-1</sup>	L <sub>WAS</sub> dB(A)			
FN080-ADL.6N.V7P5	Δ	I	400*	50	②	2.10*	860*	650*	70			
					③	1.90*	700*	680*	72			
					⑤	0.96*	480*	480*	62			
		Y			II	⑥	0.90*	440*	530*	66		
						Δ	I	②	2.50*	1300*	740*	73
								③	2.20*	1100*	780*	75
	Y	II	400*	⑤	2.30*	1100*	680*	71				
				⑥	2.10*	960*	730*	73				
				⑧	1.10*	640*	510*	63				
		III	460*	⑨	1.00*	580*	570*	67				
				IV	400*	⑪	1.00*	520*	460*	62		
						⑫	0.96*	480*	510*	65		

\*rated data

## Fan ordering information

**Airflow direction** 

Design	L (guard grille suction side)	L (guard grille two-sided)
		
<b>Type</b>	FN080-ADL.6N.V7P5	FN080-ADL.6N.V7P5
<b>Article no.</b>	168903/10K1	168903/10K3
<b>Weight kg</b>	59.80	63.30

## Control technology

Frequency inverters	Motor protection units	Electronic voltage controllers
Fcontrol 3~	3~	3~
		
Page 208	Page 206	Page 218

ziehl-abegg.com

Fiche produit Motralec Ziehl Abegg Fe2Owlet FN080 AD - fiche technique | Motralec

■ **DEMANDE DE PRIX RAPIDE** : <https://www.motralec.com/demandeContact>

## Besoin d'un prix ou d'un conseil technique ?

Ventilateur Ziehl Abegg FE2OWLET FN080 AD



4,7/5 . +600 avis Google

- Devis rapide et conseil technique par nos spécialistes
- Plus de 200 000 références et 30 marques distribuées
- Vente, réparation, bobinage et SAV en atelier
- Livraison partout en France, accompagnement avant et après-vente

Voir la gamme Ziehl Abegg sur notre site :

[www.motralec.com/.../ziehl-abegg](http://www.motralec.com/.../ziehl-abegg)

**DEMANDER UN PRIX >**