

Fiche produit Motralec Ziehl Abegg C Series RH35C 4D - fiche technique | Motralec

■ DEMANDE DE PRIX RAPIDE : <https://www.motralec.com/demandeContact>

www.motralec.com / service-commercial@motralec.com / 01.39.97.65.10

C-series AC technology
7/4/3/1

Fans for railroad engineering
7/4/3/1

C-series

for three phase alternating current, 4 pole

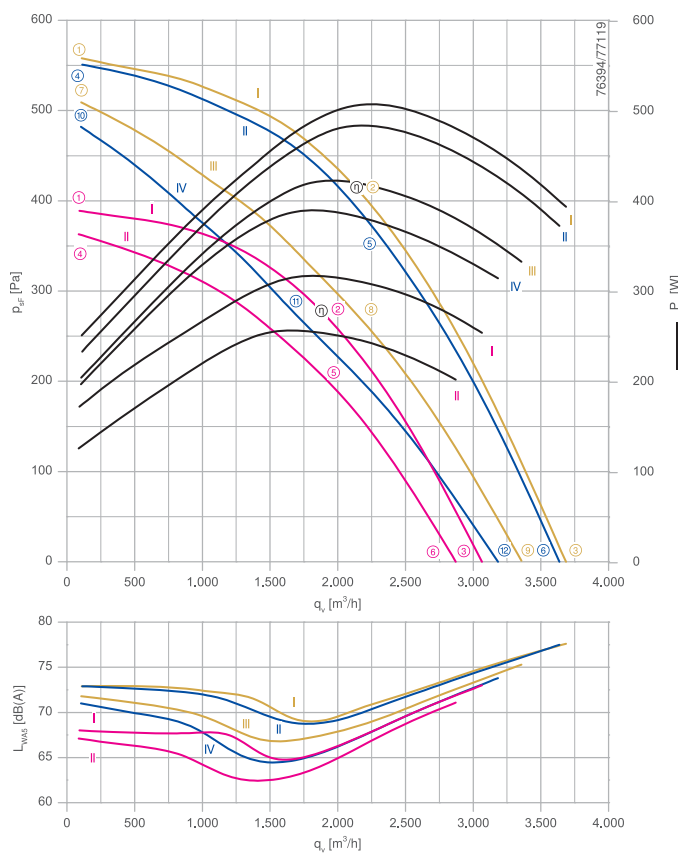
RH35C-4D



Description

Motor technology: AC
 Rated voltage U_N :
 3- 230/400 V (Δ/Y) | 3-230/400 V (Δ/Y) | 3-265/460 V (Δ/Y) *
 Rated frequency f_N : 50 Hz | 60 Hz | 60 Hz*
 Input power P_i :
 320 W | 480 W | 500 W*
 Rated current I_N :
 1.40/0.82 A | 1.50/0.88 A | 1.55/0.90 A*
 Rated speed n_N :
 1440 min⁻¹ | 1680 min⁻¹ | 1710 min⁻¹*
 Starting current I_A : 8,00/4,60 A | 7,00/4,00 A | 8,50/4,80 A
 Current increase ΔI : 10 % | 30 % | 30 %
 Thermal class: THCL155*
 Min. permitted ambient temperature $t_{R(min)}$: -40 °C***
 Max. permitted ambient temperature $t_{R(max)}$:
 60 °C | 60 °C | 60 °C
 Electrical connection: Supply cable side, 105cm
 Degree of protection : IP54
 Motor protection: thermal contact
 Impeller : aluminium, unpainted
 Motor: Aluminium, 1 coat paint, pebble grey
 Conformity: CE
 * Rated data
 *** Continuous operation with occasional starts (S1) according to DIN EN 60034-1:2011-02. Occasional starting between -40 °C and -25 °C is permissible. Continuous operation below -25 °C only with special bearings for refrigeration applications on request.

Characteristic curve

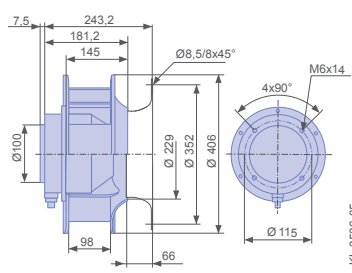


Measured with inlet ring, without guard grille according to ISO 5801

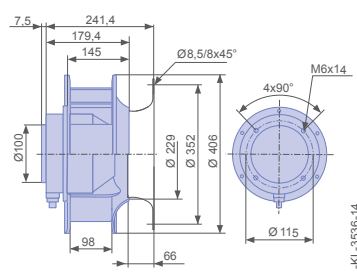
Inlet ring	00411854	RAL 7032 (pebble grey)	Page 302
Inlet ring	00411847	unpainted	
Connection diagram	1360-106XA		Page 327

Dimensions mm

Free-running motorized impeller RH in installation position H/Vu





Free-running motorized impeller RH in installation position H/Vo



Type	Characteristic curve	Voltage	Frequency	Operating point	Current	Input power	Speed	Suction side sound power level
		U V	f Hz		I A	P _i W	n min ⁻¹	L _{WAS} dB(A)
RH35C-4DK.4F.1R	I	400	50	①	0.76	170	1470	68
		400*		②	0.82*	320*	1440*	66
		400		③	0.78	250	1450	73
		230		④	0.44	130	1420	67
		230		⑤	0.74	260	1320	64
		230		⑥	0.60	200	1360	71
	II	460	60	①	0.72	250	1770	73
		460*		②	0.90*	500*	1710*	70
		460		③	0.80	390	1740	78
		400		④	0.60	230	1760	73
		400*		⑤	0.88*	480*	1680*	71
		400		⑥	0.74	370	1710	78
III	265		⑦	0.54	210	1690	72	
	265		⑧	1.05	420	1500	69	
	265		⑨	0.84	330	1580	75	
IV	230		⑩	0.58	200	1640	71	
	230		⑪	1.10	390	1380	65	
	230		⑫	0.90	320	1500	74	

*rated data

Fan ordering information

Design	RH*	RH*
Installation position	H/Vu	H/Vo
		
Type	RH35C-4DK.4F.1R	RH35C-4DK.4F.1R
Article no.	172176	175263
Weight kg	9.00	9.00
* inlet ring not included		

ziehl-abegg.com



Fiche produit Motralec Ziehl Abegg C Series RH35C 4D - fiche technique | Motralec

■ **DEMANDE DE PRIX RAPIDE** : <https://www.motralec.com/demandeContact>

Besoin d'un prix ou d'un conseil technique ?

Ventilateur Ziehl Abegg C SERIES RH35C 4D



4,7/5 . +600 avis Google

- Devis rapide et conseil technique par nos spécialistes
- Plus de 200 000 références et 30 marques distribuées
- Vente, réparation, bobinage et SAV en atelier
- Livraison partout en France, accompagnement avant et après-vente

Voir la gamme Ziehl Abegg sur notre site :

www.motralec.com/.../ziehl-abegg

DEMANDER UN PRIX >