

Fiche produit Motralec Ziehl Abegg C Series RH35C 2D - fiche technique | Motralec

■ **DEMANDE DE PRIX RAPIDE** : <https://www.motralec.com/demandeContact>

[www.motralec.com](http://www.motralec.com) / [service-commercial@motralec.com](mailto:service-commercial@motralec.com) / 01.39.97.65.10

# C-series

for three phase alternating current, 2 pole

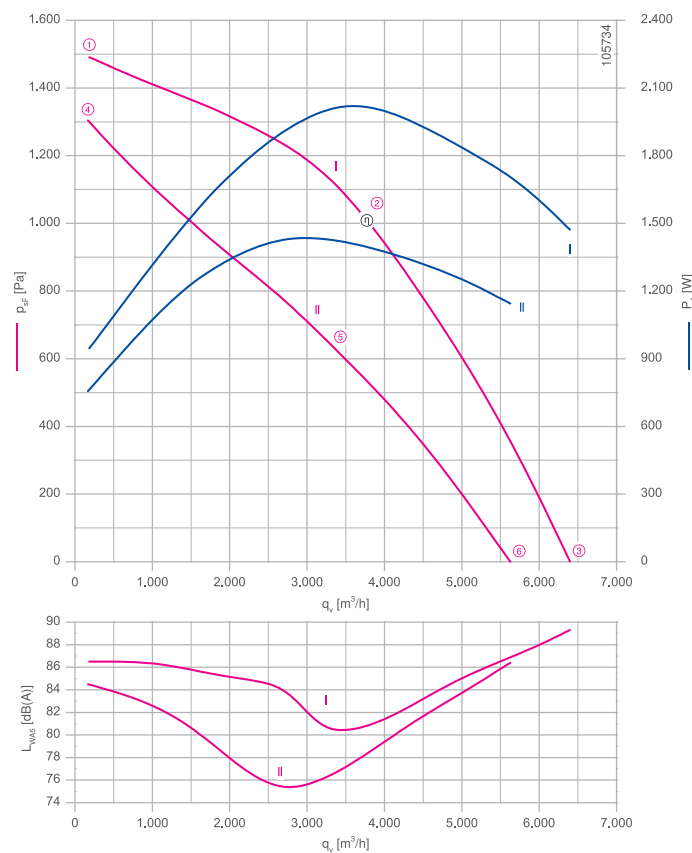
RH35C-2D



### Description

Motor technology: AC  
 Rated voltage  $U_N$ : 3~ 230/400 V ( $\Delta/Y$ )\*  
 Rated frequency  $f_N$ : 50 Hz\*  
 Input power  $P_i$ : 2.00 kW\*  
 Rated current  $I_N$ : 6.60/3.80 A\*  
 Rated speed  $n_N$ : 2750 min<sup>-1</sup>\*  
 Current increase  $\Delta I$ : 10 %  
 Thermal class: THCL155\*  
 Min. permitted ambient temperature  $t_{R(min)}$ : -40 °C\*\*\*  
 Max. permitted ambient temperature  $t_{R(max)}$ : 60 °C  
 Electrical connection: Supply cable side, 105cm  
 Degree of protection : IP54  
 Motor protection: thermal contact  
 Impeller : aluminium, unpainted  
 Motor: Aluminium, 1 coat paint, pebble grey  
 Conformity: CE  
 \* Rated data  
 \*\*\* Continuous operation with occasional starts (S1) according to DIN EN 60034-1:2011-02. Occasional starting between -40 °C and -25 °C is permissible. Continuous operation below -25 °C only with special bearings for refrigeration applications on request.

Characteristic curve

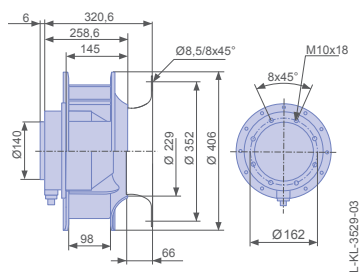


Measured with inlet ring, without guard grille according to ISO 5801

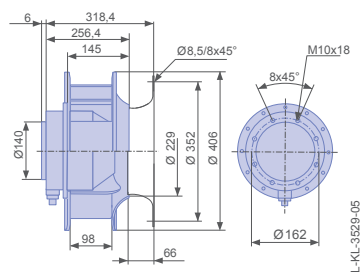
Inlet ring	00411854	RAL 7032 (pebble grey)	Page 302
Inlet ring	00411847	unpainted	
Connection diagram	1360-106XA		Page 327

### Dimensions mm

Free-running motorized impeller RH in installation position H/Vu



Free-running motorized impeller RH in installation position H/Vo



Type	Characteristic curve	Voltage	Operating point	Current	Input power	Speed	Suction side sound power level
		U V		I A	P <sub>1</sub> W	n min <sup>-1</sup>	L <sub>WA5</sub> dB(A)
RH35C-2DD.6K.1R	I	400	①	2.60	940	2900	87
		400*	②	3.80*	2000*	2750*	81
		400	③	3.10	1450	2830	89

\*rated data

### Fan ordering information

Design	RH*	RH*
Installation position	H/Vu	H/Vo
		
<b>Type</b>	<b>RH35C-2DD.6K.1R</b>	<b>RH35C-2DD.6K.1R</b>
<b>Article no.</b>	<b>172175</b>	<b>175262</b>
Weight kg	19.00	19.00
* inlet ring not included		

Information

ZArail

Cpro-ECblue

C-ECblue

C series

N series

M series

FEZowlet

ziehl-abegg.com



Fiche produit Motralec Ziehl Abegg C Series RH35C 2D - fiche technique | Motralec

■ **DEMANDE DE PRIX RAPIDE** : <https://www.motralec.com/demandeContact>

## Besoin d'un prix ou d'un conseil technique ?

Ventilateur Ziehl Abegg C SERIES RH35C 2D



4,7/5 . +600 avis Google

- Devis rapide et conseil technique par nos spécialistes
- Plus de 200 000 références et 30 marques distribuées
- Vente, réparation, bobinage et SAV en atelier
- Livraison partout en France, accompagnement avant et après-vente

Voir la gamme Ziehl Abegg sur notre site :

[www.motralec.com/.../ziehl-abegg](http://www.motralec.com/.../ziehl-abegg)

**DEMANDER UN PRIX >**