

Fiche produit Motralec Ziehl Abegg C Series RH31C 4D - fiche technique | Motralec

■ **DEMANDE DE PRIX RAPIDE** : <https://www.motralec.com/demandeContact>

www.motralec.com / service-commercial@motralec.com / 01.39.97.65.10

C-series

for three phase alternating current, 4 pole

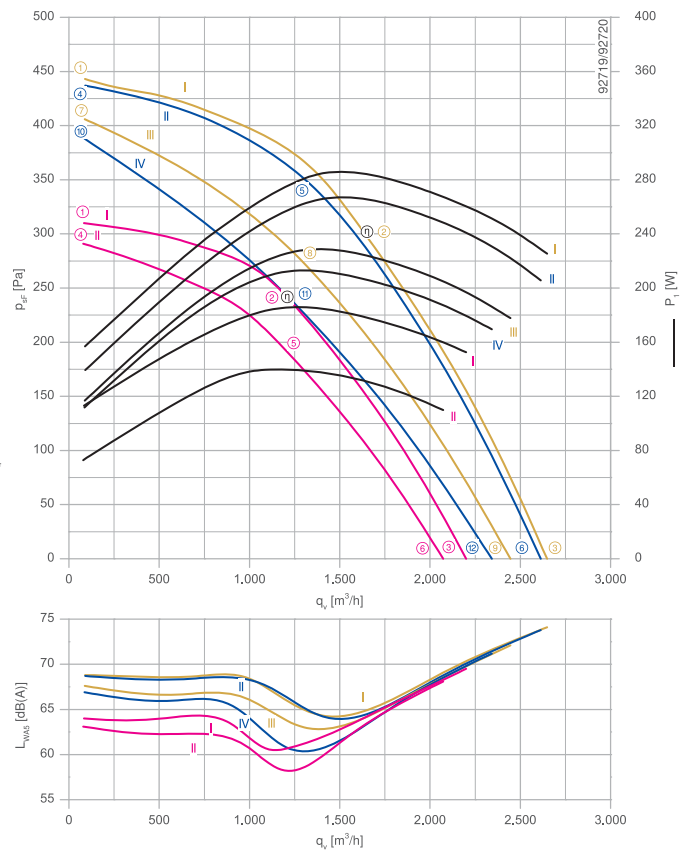
RH31C-4D



Description

Motor technology: AC
 Rated voltage U_N :
 3- 230/400 V (Δ/Y) | 3~230/400 V (Δ/Y) | 3~265/460 V (Δ/Y) *
 Rated frequency f_N : 50 Hz | 60 Hz | 60 Hz*
 Input power P_i :
 190 W | 270 W | 290 W*
 Rated current I_N :
 0.94/0.54 A | 0.90/0.52 A | 0.96/0.56 A*
 Rated speed n_N :
 1440 min⁻¹ | 1690 min⁻¹ | 1720 min⁻¹**
 Starting current I_s : 4.0/2.80 A | 4.40/2.60 A | 5.00/3.00 A
 Current increase ΔI : 0 % | 0 % | 0 %
 Thermal class: THCL155*
 Min. permitted ambient temperature $t_{R(min)}$: -40 °C***
 Max. permitted ambient temperature $t_{R(max)}$:
 70 °C | 70 °C | 70 °C
 Electrical connection: Supply cable side, 105cm
 Degree of protection : IP54
 Motor protection: thermal contact
 Impeller : aluminium, unpainted
 Motor: Aluminium, 1 coat paint, pebble grey
 Conformity: CE
 * Rated data
 *** Continuous operation with occasional starts (S1) according to DIN EN 60034-1:2011-02. Occasional starting between -40 °C and -25 °C is permissible. Continuous operation below -25 °C only with special bearings for refrigeration applications on request.

Characteristic curve

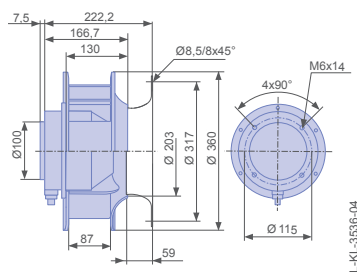


Measured with inlet ring, without guard grille according to ISO 5801

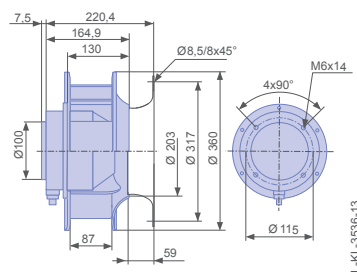
Inlet ring	00411853	RAL 7032 (pebble grey)	Page 302
Inlet ring	00411846	unpainted	
Connection diagram	1360-106XA		Page 327

Dimensions mm

Free-running motorized impeller RH in installation position H/Vu





Free-running motorized impeller RH in installation position H/Vo



Type	Characteristic curve	Voltage	Frequency	Operating point	Current	Input power	Speed	Suction side sound power level
		U V	f Hz		I A	P _i W	n min ⁻¹	L _{WAS} dB(A)
RH31C-4DK.4C.1R	I	400	50	①	0.50	110	1470	64
		400*		②	0.54*	190*	1440*	61
		400		③	0.52	150	1460	70
		230		④	0.27	75	1430	63
		230		⑤	0.42	140	1340	58
		230		⑥	0.34	110	1380	68
	II	460	60	①	0.46	160	1770	69
		460*		②	0.56*	290*	1720*	65
		460		③	0.52	230	1740	74
		400		④	0.38	140	1750	69
		400*		⑤	0.52*	270*	1690*	64
		400		⑥	0.44	210	1720	74
III	265		⑦	0.32	120	1690	68	
	265		⑧	0.56	230	1540	63	
	265		⑨	0.44	180	1610	72	
IV	230		⑩	0.33	110	1650	67	
	230		⑪	0.60	210	1440	61	
	230		⑫	0.48	170	1550	71	

*rated data

Fan ordering information

Design	RH*	RH*
Installation position	H/Vu	H/Vo
		
Type	RH31C-4DK.4C.1R	RH31C-4DK.4C.1R
Article no.	172173	175260
Weight kg	7.00	7.00
* inlet ring not included		

ziehl-abegg.com



171

Fiche produit Motralec Ziehl Abegg C Series RH31C 4D - fiche technique | Motralec

■ **DEMANDE DE PRIX RAPIDE** : <https://www.motralec.com/demandeContact>

Besoin d'un prix ou d'un conseil technique ?

Ventilateur Ziehl Abegg C SERIES RH31C 4D



4,7/5 . +600 avis Google

- Devis rapide et conseil technique par nos spécialistes
- Plus de 200 000 références et 30 marques distribuées
- Vente, réparation, bobinage et SAV en atelier
- Livraison partout en France, accompagnement avant et après-vente

Voir la gamme Ziehl Abegg sur notre site :

www.motralec.com/.../ziehl-abegg

DEMANDER UN PRIX >