

Fiche produit Motralec Ziehl Abegg C Series RH31C 2D - fiche technique | Motralec

■ **DEMANDE DE PRIX RAPIDE** : <https://www.motralec.com/demandeContact>

www.motralec.com / service-commercial@motralec.com / 01.39.97.65.10

# C-series

for three phase alternating current, 2 pole

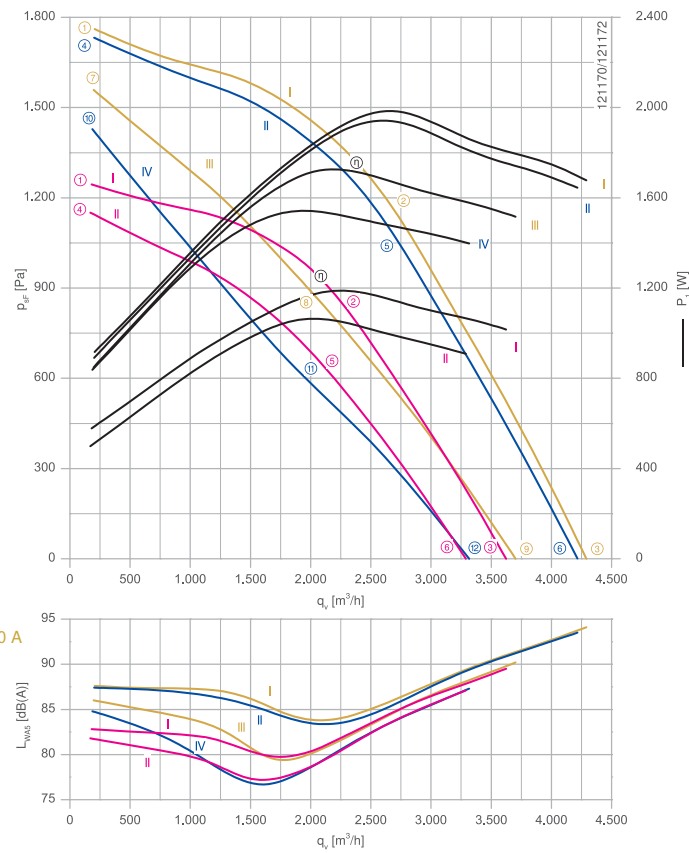
RH31C-2D



### Description

Motor technology: AC  
 Rated voltage  $U_N$ :  
 3- 230/400 V ( $\Delta/Y$ ) | 3-230/400 V ( $\Delta/Y$ ) | 3-265/460 V ( $\Delta/Y$ ) \*  
 Rated frequency  $f_N$ : 50 Hz | 60 Hz | 60 Hz\*  
 Input power  $P_i$ :  
 1.20 kW | 1.95 kW | 2.00 kW\*  
 Rated current  $I_N$ :  
 3.50/2.00 A | 5.20/3.00 A | 4.70/2.70 A\*  
 Rated speed  $n_N$ :  
 2870 min<sup>-1</sup> | 3320 min<sup>-1</sup> | 3390 min<sup>-1</sup>\*  
 Starting current  $I_A$ : 26,00/15,00 A | 24,00/14,00 A | 28,00/17,00 A  
 Thermal class: THCL155\*  
 Min. permitted ambient temperature  $t_{R(min)}$ : -20 °C  
 Max. permitted ambient temperature  $t_{R(max)}$ :  
 70 °C | 60 °C | 60 °C  
 Electrical connection: Supply cable side, 105cm  
 Degree of protection : IP54  
 Motor protection: thermal contact  
 Impeller : bright sheet metal, powder-coated, ultramarine blue  
 Motor: Aluminium, 1 coat paint, pebble grey  
 Conformity: CE  
 \* Rated data

Characteristic curve

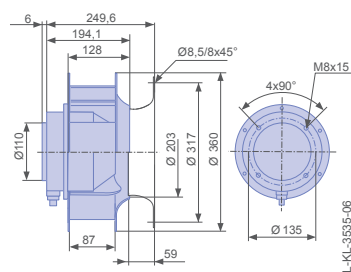


Measured with inlet ring, without guard grille according to ISO 5801  
 Not 60Hz voltage controllable fan.

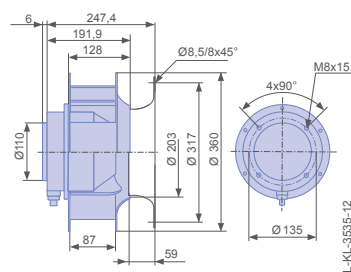
Inlet ring	00411853	RAL 7032	Page 302
Inlet ring	00411846	(pebble grey) unpainted	
Connection diagram	1360-106XA		Page 327

### Dimensions mm

Free-running motorized impeller RH in installation position H/Vu





Free-running motorized impeller RH in installation position H/Vo



Type	Characteristic curve	Voltage	Frequency	Operating point	Current	Input power	Speed	Suction side sound power level
		U V	f Hz		I A	P <sub>i</sub> W	n min <sup>-1</sup>	L <sub>WAS</sub> dB(A)
RH31C-2DD.5L.1R	I	400	50	①	1.35	580	2950	83
		400*		②	2.00*	1200*	2870*	82
		400		③	1.85	1000	2900	90
		230		④	1.35	500	2840	82
		230		⑤	2.80	1050	2570	79
		230		⑥	2.40	900	2660	87
	II	460	60	①	1.50	920	3520	88
		460*		②	2.70*	2000*	3390*	86
		460		③	2.40	1700	3430	94
		400		④	1.50	900	3490	87
		400*		⑤	3.00*	1950*	3320*	86
		400		⑥	2.60	1650	3370	94
III	265		⑦	1.95	840	3320	86	
	265		⑧	4.00	1700	2800	80	
	265		⑨	3.60	1500	2970	90	
IV	230		⑩	2.20	840	3180	85	
	230		⑪	4.20	1550	2450	78	
	230		⑫	3.80	1400	2690	87	

\*rated data

### Fan ordering information

Design	RH*	RH*
Installation position	H/Vu	H/Vo
		
<b>Type</b>	<b>RH31C-2DD.5L.1R</b>	<b>RH31C-2DD.5L.1R</b>
<b>Article no.</b>	<b>172172</b>	<b>175259</b>
Weight kg	19.00	19.00
* inlet ring not included		

ziehl-abegg.com



169

Fiche produit Motralec Ziehl Abegg C Series RH31C 2D - fiche technique | Motralec

■ **DEMANDE DE PRIX RAPIDE** : <https://www.motralec.com/demandeContact>

## Besoin d'un prix ou d'un conseil technique ?

Ventilateur Ziehl Abegg C SERIES RH31C 2D



4,7/5 . +600 avis Google

- Devis rapide et conseil technique par nos spécialistes
- Plus de 200 000 références et 30 marques distribuées
- Vente, réparation, bobinage et SAV en atelier
- Livraison partout en France, accompagnement avant et après-vente

Voir la gamme Ziehl Abegg sur notre site :

[www.motralec.com/.../ziehl-abegg](http://www.motralec.com/.../ziehl-abegg)

**DEMANDER UN PRIX >**