

Fiche produit Motralec Ziehl Abegg C Series RH28C 2D - fiche technique | Motralec

■ **DEMANDE DE PRIX RAPIDE** : <https://www.motralec.com/demandeContact>

www.motralec.com / service-commercial@motralec.com / 01.39.97.65.10

C-series

for three phase alternating current, 2 pole

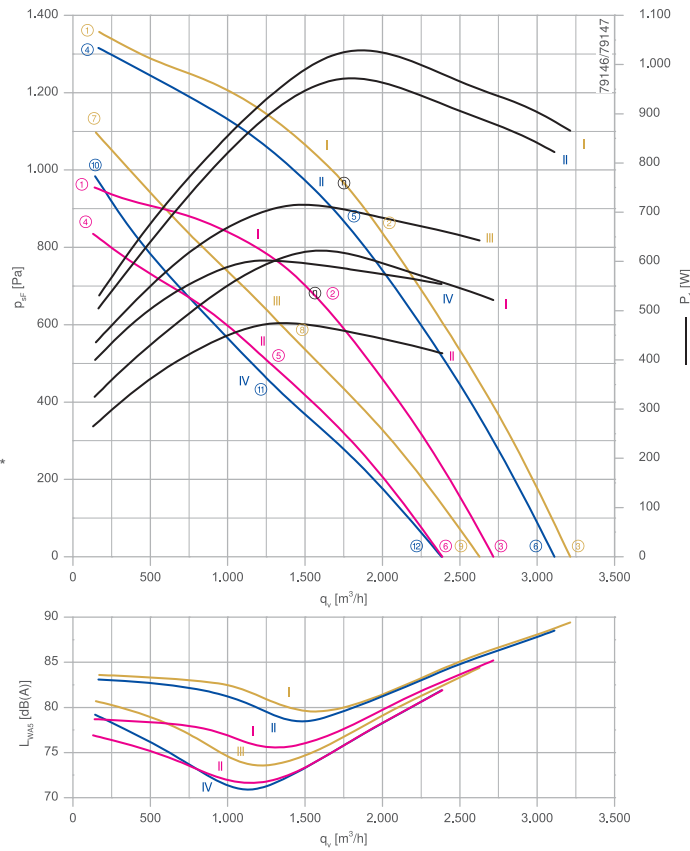
RH28C-2D



Description

Motor technology: AC
 Rated voltage U_N :
3- 230/400 V (Δ/Y) | 3-230/400 V (Δ/Y) | 3-265/460 V (Δ/Y) *
 Rated frequency f_N : **50 Hz | 60 Hz | 60 Hz***
 Input power P_i :
620 W | 980 W | 1.05 kW*
 Rated current I_N :
2.10/1.20 A | 2.80/1.60 A | 2.70/1.55 A*
 Rated speed n_N :
2790 min⁻¹ | 3150 min⁻¹ | 3270 min⁻¹*
 Starting current I_A : **11.00/6.50 A | 10.00/6.00 A | 12.00/7.00 A**
 Current increase ΔI : **15 % | 10 % | 15 %**
 Thermal class: THCL155*
 Min. permitted ambient temperature $t_{R(min)}$: **-40 °C*****
 Max. permitted ambient temperature $t_{R(max)}$:
70 °C | 65 °C | 65 °C
 Electrical connection: Supply cable side, 105cm
 Degree of protection : IP54
 Motor protection: thermal contact
 Impeller : aluminium, unpainted
 Motor: Aluminium, 1 coat paint, pebble grey
 Conformity: CE
 * Rated data
 *** Continuous operation with occasional starts (S1) according to DIN EN 60034-1:2011-02. Occasional starting between -40 °C and -25 °C is permissible. Continuous operation below -25 °C only with special bearings for refrigeration applications on request.

Characteristic curve

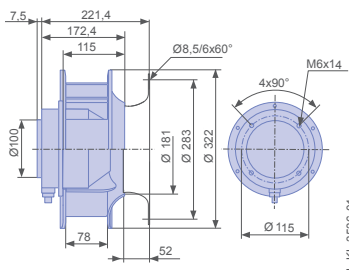


Measured with inlet ring, without guard grille according to ISO 5801

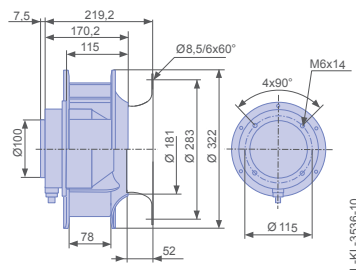
Inlet ring	00401778	RAL 7032 (pebble grey)	Page 302
Inlet ring	00400804	unpainted	
Connection diagram	1360-106XA		Page 327

Dimensions mm

Free-running motorized impeller RH in installation position H/Vu





Free-running motorized impeller RH in installation position H/Vo



Type	Characteristic curve	Voltage	Frequency	Operating point	Current	Input power	Speed	Suction side sound power level
		U V	f Hz		I A	P _i W	n min ⁻¹	L _{WAS} dB(A)
RH28C-2DD.3I.1R	I	400	50	①	0.92	320	2910	79
		400*		②	1.20*	620*	2790*	76
		400		③	1.10	520	2830	85
		230		④	0.78	260	2710	77
		230		⑤	1.35	480	2380	72
		230		⑥	1.20	420	2490	82
	II	460	60	①	0.98	540	3460	84
		460*		②	1.55*	1050*	3270*	81
		460		③	1.35	860	3340	89
		400		④	0.94	500	3410	83
		400*		⑤	1.60*	980*	3150*	80
		400		⑥	1.40	820	3240	89
III	265		⑦	1.10	440	3120	81	
	265		⑧	1.80	720	2560	74	
	265		⑨	1.60	640	2740	84	
IV	230		⑩	1.15	400	2950	79	
	230		⑪	1.75	600	2300	72	
	230		⑫	1.60	560	2490	82	

*rated data

Fan ordering information

Design	RH*	RH*
Installation position	H/Vu	H/Vo
		
Type	RH28C-2DD.3I.1R	RH28C-2DD.3I.1R
Article no.	172168	175255
Weight kg	10.00	10.00
* inlet ring not included		

ziehl-abegg.com



161

Fiche produit Motralec Ziehl Abegg C Series RH28C 2D - fiche technique | Motralec

■ **DEMANDE DE PRIX RAPIDE** : <https://www.motralec.com/demandeContact>

Besoin d'un prix ou d'un conseil technique ?

Ventilateur Ziehl Abegg C SERIES RH28C 2D



4,7/5 . +600 avis Google

- Devis rapide et conseil technique par nos spécialistes
- Plus de 200 000 références et 30 marques distribuées
- Vente, réparation, bobinage et SAV en atelier
- Livraison partout en France, accompagnement avant et après-vente

Voir la gamme Ziehl Abegg sur notre site :

www.motralec.com/.../ziehl-abegg

DEMANDER UN PRIX >