

C-series

for three phase alternating current, 2 pole

RH25C-2D



Description

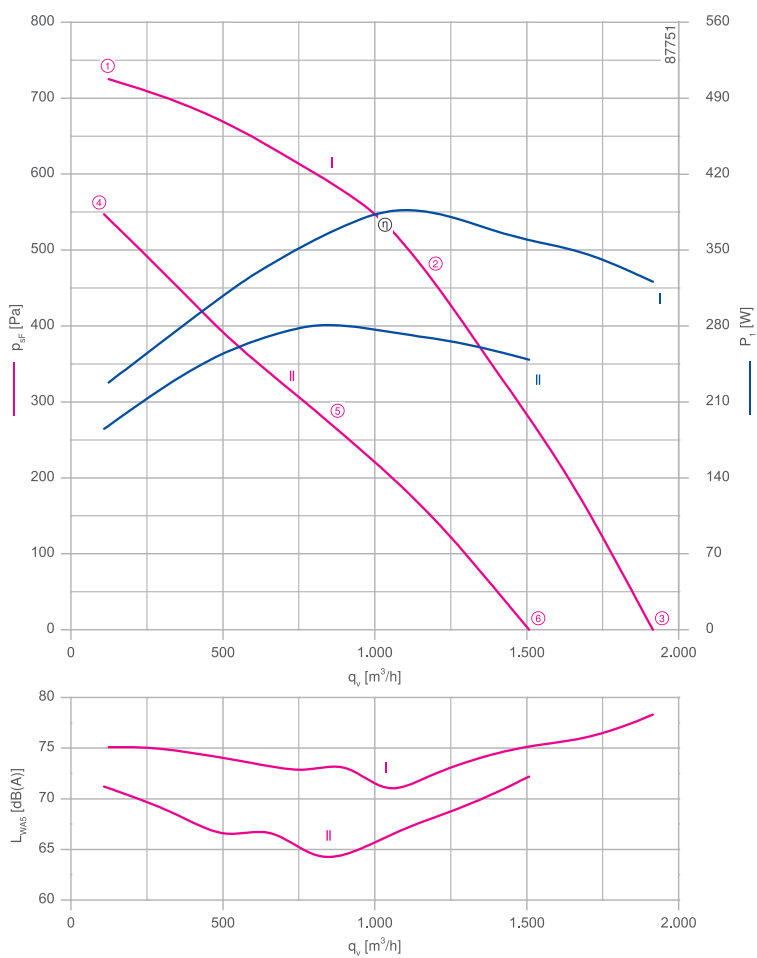
Motor technology: AC
 Rated voltage U_N : 3~ 230/400 V (Δ/Y)*
 Rated frequency f_N : 50 Hz*
 Input power P_i : 390 W*
 Rated current I_N : 1.10/0.64 A*
 Rated speed n_N : 2690 min⁻¹*
 Starting current I_A : 4.00/2.20 A
 Current increase ΔI : 15 %
 Thermal class: THCL155*
 Min. permitted ambient temperature $t_{R(min)}$: -40 °C***
 Max. permitted ambient temperature $t_{R(max)}$: 70 °C

Electrical connection: Supply cable side, 105cm
 Degree of protection : IP54Z
 Motor protection: thermal contact
 Impeller : aluminium, unpainted
 Motor: Aluminium, 1 coat paint, pebble grey
 Conformity: CE

* Rated data

*** Continuous operation with occasional starts (S1) according to DIN EN 60034-1:2011-02. Occasional starting between -40 °C and -25 °C is permissible. Continuous operation below -25 °C only with special bearings for refrigeration applications on request.

Characteristic curve

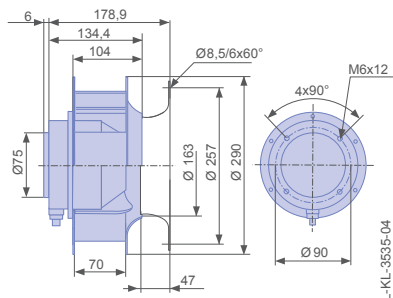


Measured with inlet ring, without guard grille according to ISO 5801

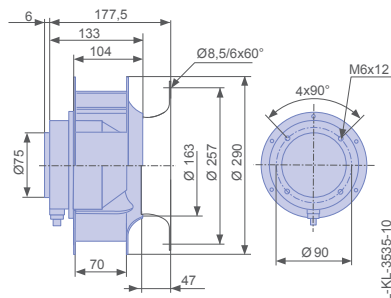
Inlet ring	00401777	RAL 7032 (pebble grey)	Page 302
Inlet ring	00400803	unpainted	
Connection diagram	1360-106XA		Page 327

Dimensions mm

Free-running motorized impeller RH
 in installation position H/Vu





Free-running motorized impeller RH
 in installation position H/Vo



Type	Characteristic curve	Voltage	Operating point	Current	Input power	Speed	Suction side sound power level L_{WAS} dB(A)
		U V		I A	P_1 W	n min ⁻¹	
RH25C-2DK.1E.1R	I	400	①	0.46	230	2840	75
		400*	②	0.64*	390*	2690*	72
		400	③	0.56	320	2750	78
	II	230	④	0.50	190	2460	71
		230	⑤	0.74	280	2000	64
		230	⑥	0.66	250	2200	72

*rated data

Fan ordering information

Design	RH*	RH*
Installation position	H/Vu	H/Vo
		
Type	RH25C-2DK.1E.1R	RH25C-2DK.1E.1R
Article no.	172166	175253
Weight kg	4.40	4.40
* inlet ring not included		