

SAER[®]

ELETTROPOMPE



BRIO 2000-M

ELECTRONIC DEVICE
FOR ELECTRIC PUMP CONTROL
AND PROTECTION

BRIO 2000-M



GENERAL FEATURES

- It automatizes the start and stop operations of single-phase electric pumps up to 2HP (12A)
- It replaces completely the traditional water system set up consisting on pressure switch and pressure tank
- It starts the electric pump after a pressure decrease (taps opening) and stops it when the fluid flow interrupts at the maximum pressure level of the electric pump (taps closing)
- It protects against the dry running
- Starting pressure is adjustable during installation
- Standard 1" G (Male) hydraulic connections
- Installation in any position - both vertical and horizontal according to the flow direction
- Easily replaceable electronic printed circuit board
- No maintenance needed



TECHNICAL FEATURES

Supply	115-220Vac $\pm 10\%$ 50/60Hz
Maximum current	12A
Intervention pressure range	1-3,5 bar
Maximum allowable pressure	10 bar
Maximum flow	10 m ³ /h
Degree of protection	IP 65
Maximum liquid temperature	35°C
Maximum ambient temperature	45°C
Hydraulic connections	1" G (Male)

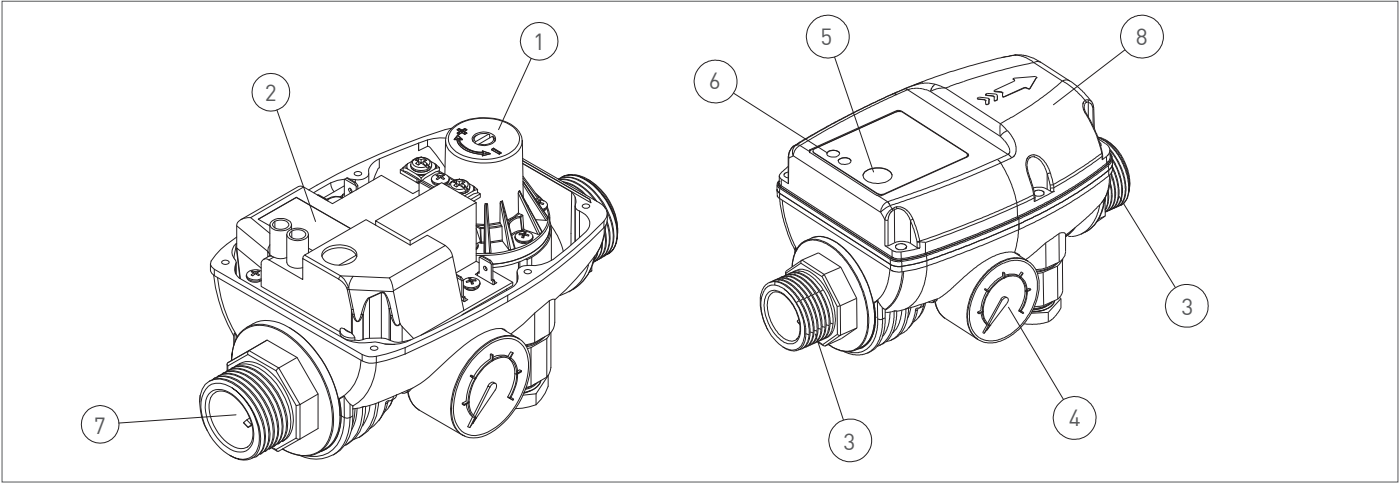
OPTIONALS AND SPECIAL VERSIONS

- Automatic reset after a stop caused by dry running
- Version with electrical cables for motor and line connection (with Schuko plug)
- Hydraulic connections with revolving nut 1" G (Female) for pipe union
- Versions for 24 V



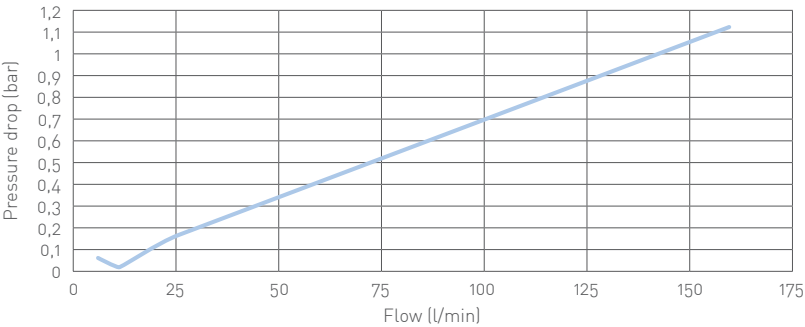
It complies with:
Low voltage Directive 2014/35/EU
Electromagnetic compatibility - EMC Directive 2014/30/EU
RoHS Directive 2011/65/EU - 2015/863/EU

CONSTRUCTION FEATURES

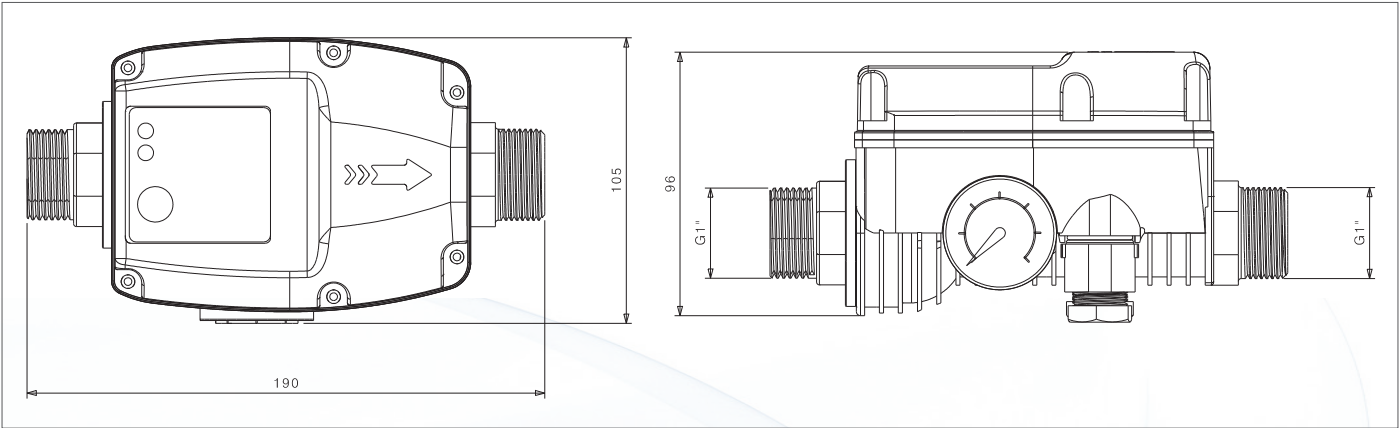


1	Pressure regulation	5	Reset button
2	Electronic printed circuit board	6	Nr. 2 signaling LEDs
3	In-line threaded connections	7	Integrated non-return valve
4	Manometer	8	Casing in thermoplastic material

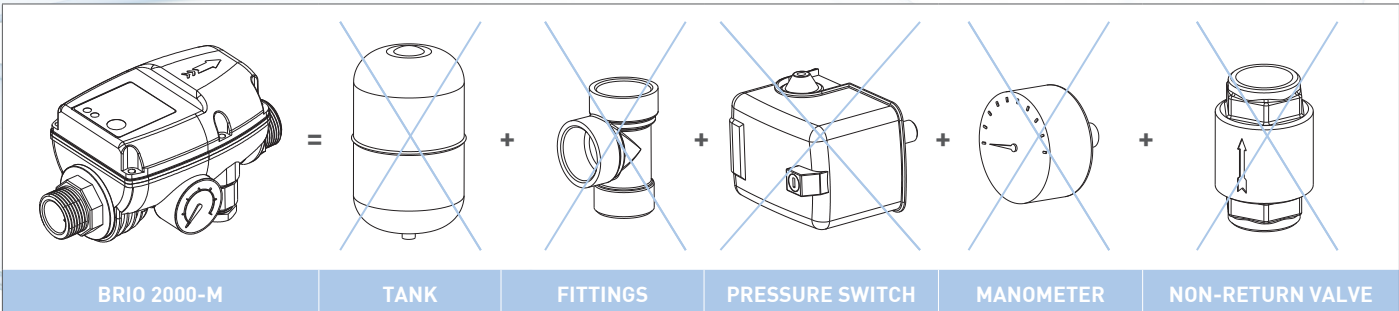
PRESSURE DROP



DIMENSIONS



IT REPLACES



BRIO 2000-M

MADE IN ITALY

COMPACT AND RELIABLE
SIMPLE INSTALLATION AND USE
ONLY ONE DEVICE INSTEAD A LOT OF ACCESSORIES

- It replaces completely the traditional water system set up consisting on pressure switch, pressure tank, manometer and junctions
- Easy and immediate installation, simple adjustment, no maintenance
- Integrated non-return valve
- Integrated protection against dry running
- Adjustable intervention pressure
- Limited load losses to safeguard system efficiency.
- IP65 protection rating and robust construction
- Multiple applications: self-priming and non-priming surface pumps, submerged pumps.



SAER
ELETTROPOMPE

SAER ELETTROPOMPE S.p.A.

Via Circonvallazione, 22 - 42016 Guastalla (RE)
Italy Tel. +39 0522 830941 - Fax +39 0522 826948
E-mail: info@saer.it - www.saerelettropompe.com

SAER.Elettropompe - @saerelettropompe - Saer Elettropompe - Saer Elettropompe

SAER Pump Selector Available on the App Store Google play



SAER is an ISO 9001:2015
Certified Company
Certificate N. 501003317

