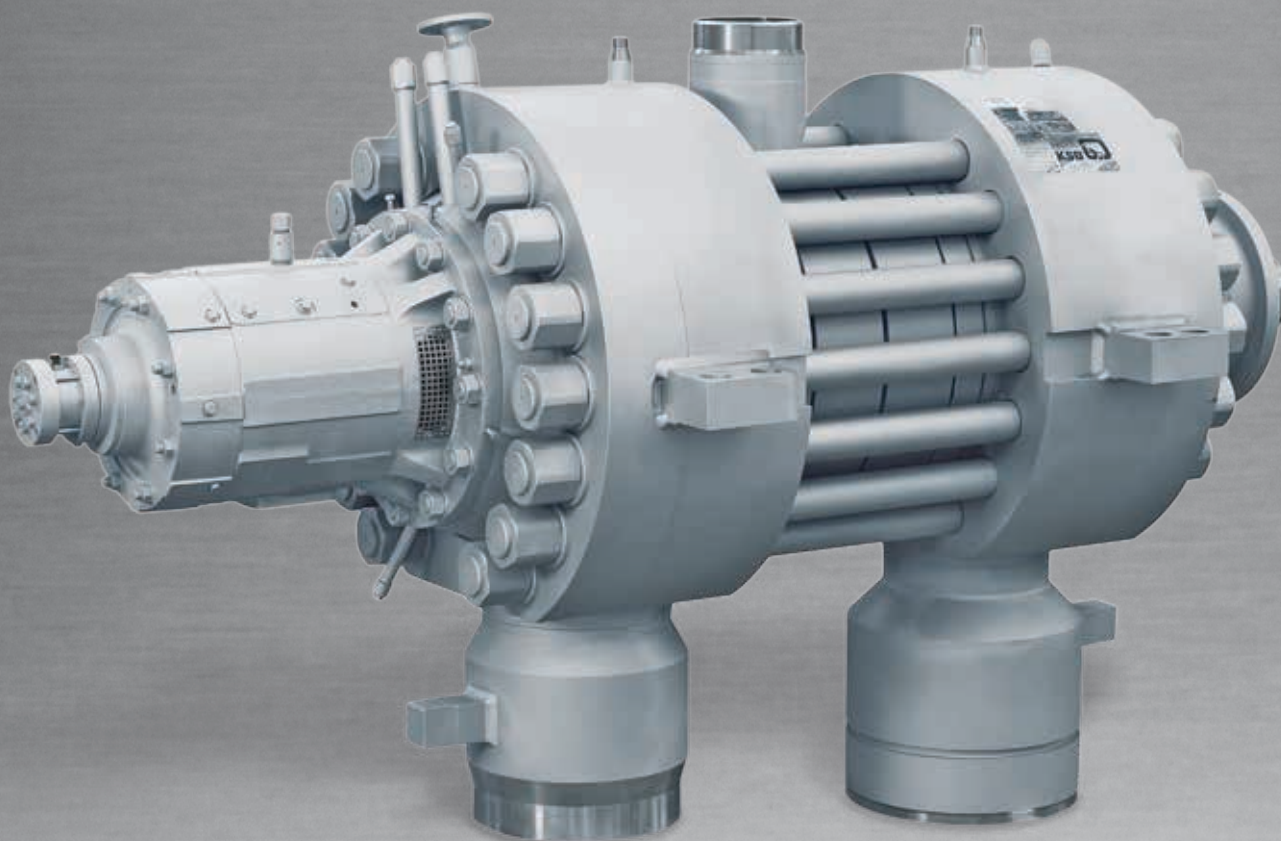


► Our technology. Your success.

Pumps • Valves • Service



HGD – Boiler feed pump

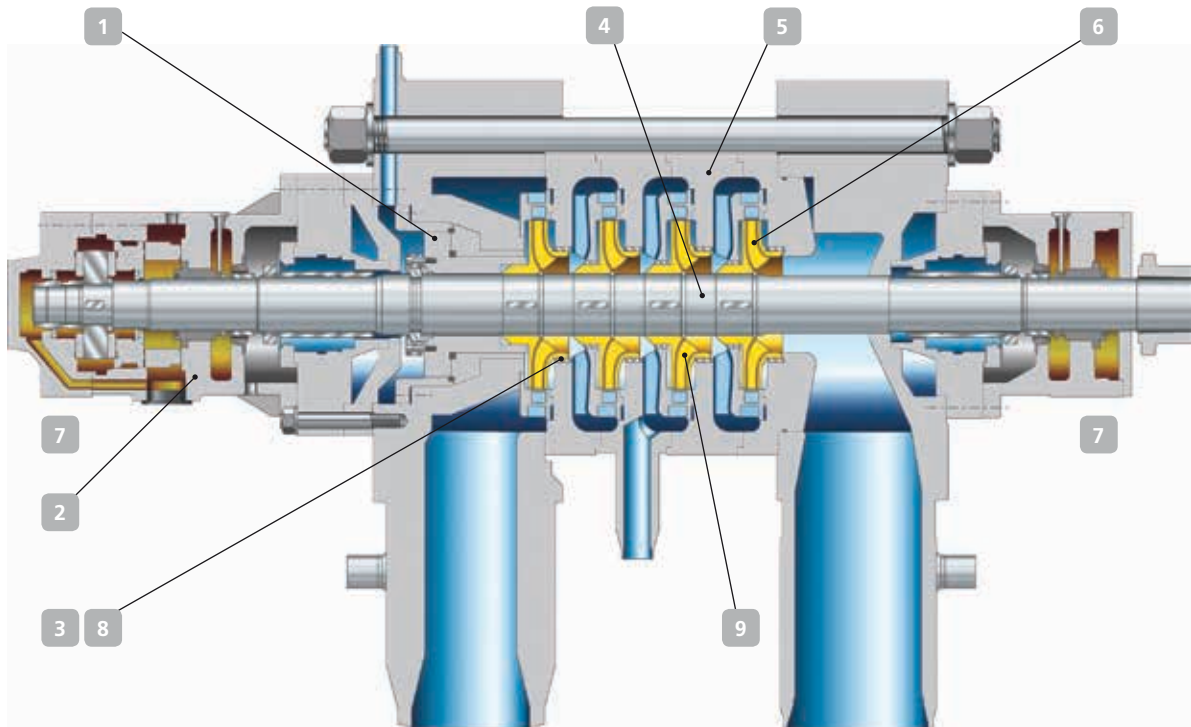


Applications:

- Handling of boiler feed water in utility power plants

Further information: www.ksb.com/products

HGD – Boiler feed pump



High operating reliability

- 1 Optimum balancing of axial thrust by double drum over a wide operating range
- 2 Closed, non-split bearing housings with high stiffness and excellent vibration behaviour
- 3 Cellular surface wear rings with excellent anti-seizure properties
- 4 Staggered shaft diameters with individual fastening of impellers ensure clear introduction of axial thrust into the shaft
- 5 Adaptation of pump casing to rotor deflection line
- 6 Vanes of suction stage impellers specially profiled for particular applications by means of computer-assisted electric-discharge machining

Materials

Suction casing	Carbon steel
Discharge casing	Chromium steel
Stage casing	Chromium steel
Impeller/diffuser	Chromium steel
Shaft	Chromium steel

Ease of service

- 7 Wear parts (bearings, seal elements, balancing device) accessible for maintenance without opening the pump

Reduced energy costs

- 8 Efficiency improvement through cellular surface wear rings
- 9 More than 100 impeller/diffuser combinations with optimum efficiencies possible

Technical data*

Capacity	2.500 m ³ /h
Head	4,500 m
Pumped medium temperature	+210 °C
Pump pressure	450 bar
Speed	6.100 min ⁻¹
Frequency	available in 50/60 HZ

*Higher ratings on request



KSB Aktiengesellschaft
Johann-Klein-Straße 9
67227 Frankenthal (Germany)
www.ksb.com