

# Conlift1, Conlift2 and Conlift2 pH+

Installation and operating instructions



be  
think  
innovate

**GRUNDFOS** 

[www.motralec.com](http://www.motralec.com) / [service-commercial@motralec.com](mailto:service-commercial@motralec.com) / 01.39.97.65.10

# English (GB) Installation and operating instructions

## Original installation and operating instructions

These installation and operating instructions describe Grundfos Conlift.

Sections 1-4 give the information necessary to be able to unpack, install and start up the product in a safe way.

Sections 5-10 give important information about the product, as well as information on service, fault finding and disposal of the product.

## CONTENTS

	Page
<b>1. Symbols used in this document</b>	<b>2</b>
1.1 Warnings against hazards involving risk of death or personal injury	2
1.2 Other important notes	3
<b>2. Receiving the product</b>	<b>3</b>
2.1 Transporting the product	3
<b>3. Installing the product</b>	<b>3</b>
3.1 Mechanical installation	3
3.2 Electrical connection	3
<b>4. Starting up the product</b>	<b>4</b>
4.1 Checking the function	4
<b>5. Product introduction</b>	<b>5</b>
5.1 Product description	5
5.2 Intended use	5
5.3 Operating mode	5
5.4 Handling of condensates	5
5.5 Marking and approvals	5
5.6 Accessories	6
<b>6. Control functions</b>	<b>6</b>
<b>7. Servicing the product</b>	<b>6</b>
7.1 Maintenance	6
7.2 Service	6
7.3 Contaminated products	7
<b>8. Fault finding the product</b>	<b>8</b>
<b>9. Technical data</b>	<b>9</b>
<b>10. Disposal</b>	<b>9</b>

## 1. Symbols used in this document

### 1.1 Warnings against hazards involving risk of death or personal injury



#### DANGER

Indicates a hazardous situation which, if not avoided, will result in death or serious personal injury.



#### WARNING

Indicates a hazardous situation which, if not avoided, could result in death or serious personal injury.



#### CAUTION

Indicates a hazardous situation which, if not avoided, could result in minor or moderate personal injury.

The text accompanying the three hazard symbols DANGER, WARNING and CAUTION is structured in the following way:



#### SIGNAL WORD

##### Description of hazard

Consequence of ignoring the warning.  
- Action to avoid the hazard.



Read this document before installing the product. Installation and operation must comply with local regulations and accepted codes of good practice.



This appliance can be used by children aged from 8 years and above and persons with reduced physical, sensory or mental capabilities or lack of experience and knowledge if they have been given supervision or instruction concerning use of the appliance in a safe way and understand the hazards involved.

Children shall not play with the appliance. Cleaning and user maintenance shall not be made by children without supervision.

## 1.2 Other important notes



A blue or grey circle with a white graphical symbol indicates that an action must be taken.



A red or grey circle with a diagonal bar, possibly with a black graphical symbol, indicates that an action must not be taken or must be stopped.



If these instructions are not observed, it may result in malfunction or damage to the equipment.



Tips and advice that make the work easier.

## 2. Receiving the product

### 2.1 Transporting the product

#### WARNING



#### Harm of body

Death or serious personal injury  
- Stack maximum two pallets together under transportation.

## 3. Installing the product



Installation must be carried out by specially trained persons and according to local regulations.

If not already integrated, a water trap (emission trap) must be fitted in all inlets.

Conclift is not designed for outdoor use.

### 3.1 Mechanical installation

See also the quick guide supplied with Conclift.

When installing Conclift, observe the following:

- The condensate must run freely into the lifting station.
- The cooling slots in the motor cover must not be covered.
- The lifting station should be easily accessible in order to facilitate maintenance.
- The lifting station must be installed in a well-illuminated and -ventilated room.
- The lifting station is protected against splashing water (in compliance with IP24).

### 3.1.1 Alarm PCB

The accessory Alarm PCB incorporates a printed-circuit board (PCB) enabling additional functions when the level in the tank reaches the alarm level.

The contact on the PCB can be set to two positions:

**Position 1:** The pump is started, and an acoustic alarm is generated.

**A:** The alarm cable is not connected to the condensate source or an external alarm. The condensate source is not switched off.

**B:** The alarm cable is connected to the condensate source or an external alarm. The condensate source is switched off. See section [3.2.1 Cable to condensate source or external alarm](#).

**Position 2:** The pump does not start, and an acoustic alarm is generated.

**A:** The alarm cable is not connected to the condensate source or an external alarm. The condensate source is not switched off.

**B:** The alarm cable is connected to the condensate source or an external alarm. The condensate source is switched off. See section [3.2.1 Cable to condensate source or external alarm](#).

### 3.2 Electrical connection



Electrical connection must be carried out by an authorized electrician.

#### WARNING

#### Electric shock



Death or serious personal injury  
- Make sure that the protective earth from the socket outlet is connected to the protective earth in the pump. Make sure that the plug has the same PE connection system as the socket outlet or else use a suitable adapter.



The product must be connected to a main switch with a minimum contact gap of 3 mm in all poles.

Check that the supply voltage and frequency correspond to the values stated on the nameplate.

We recommend to provide the permanent installation with an earth leakage circuit breaker (ELCB) with a tripping current < 30 mA.

The power supply cable has a Schuko plug or a free cable end. The cable has a length of 2 metres.

### 3.2.1 Cable to condensate source or external alarm

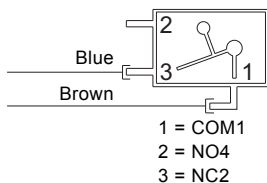


The electrical connection of a cable with a free cable end must be carried out by an authorised electrician.

Conclift has a safety overflow switch which can be connected to the condensate source or to an external alarm system. The switch is connected to a 1.7 metre alarm cable with free cable end.

Alarm systems with a control voltage of 250 VAC, 2.5 A, can be used.

On delivery, the alarm cable is connected to terminals COM1 (brown) and NC2 (blue) of the safety overflow switch. See fig. 1.



**Fig. 1** Wiring diagram

The alarm cable can be connected in two ways, depending on application:

- **Shutdown of condensate source**  
The safety overflow switch can be connected to a Class-II low-voltage circuit.  
To enable shutdown of the condensate source, the COM1 and NC2 terminals of the safety overflow switch must be connected in series with the low-voltage thermostat circuit of the condensate source.
- **External alarm system**  
The COM1 and NO4 terminals can be used to close a low-voltage alarm circuit.  
To activate an alarm, the COM1 and NO4 terminals of the safety overflow switch must be connected in series with the low-voltage alarm circuit.

## 4. Starting up the product



Start up Conclift in accordance with local regulations and accepted codes of good practice.

1. Check that all hoses and connections are tight.
2. Connect the power supply.

### 4.1 Checking the function

#### Pump operation

Press the manual test button.

#### Alarm

1. To ensure that the alarm level is reached, squeeze the outlet hose or close the isolating valve, if fitted, and fill water into the tank. The pump will be started via the float switch.
2. Continue filling water into the tank until the safety overflow switch is activated. If no external alarm is connected to Conclift, this function can be checked by means of a multimeter.



The safety overflow switch must be activated before the water starts running out of Conclift.

3. Stop filling water into the tank and stop squeezing the outlet hose. The alarm stops (the switch opens). The pump continues operating. When the stop level is reached, the pump stops.

After checking the function, push the inlet hose back into the lifting station and let the condensate from the boiler or air-conditioning system run into the tank again.

TM05 1152 2211

## 5. Product introduction

### 5.1 Product description

Grundfos Conlift1 is a small, compact lifting station with a built-in non-return valve.

The lifting station incorporates a printed-circuit board (PCB) with a safety device enabling an alarm function and additional pump start in case of overflow.

The pH+ Box is a neutralisation unit designed to neutralise the acid condensate coming from gas- and oil-powered boilers and is available as accessory. See section 9. [Technical data](#).

### 5.2 Intended use

Conlift is designed for the pumping of condensate from the following:

- boilers
- air-conditioning systems
- cooling and refrigeration systems
- air dehumidifiers
- evaporators.

Conlift is suitable for the pumping of condensate which is collected below sewer level or which cannot flow to the sewage system or drain of the building by means of a natural downward slope.

#### WARNING



#### Biological hazard

- Death or serious personal injury
- Use the product only to pump condensates.

Conlift can pump condensates not requiring neutralisation, i.e. with pH values of 2.5 or higher.

Condensates with pH values up to 2.5 should be neutralised before they leave Conlift.

Boilers fired with the following fuels normally supply condensate with pH values up to 2.5:

- gas
- liquid gas
- low-sulphur fuel oil according to DIN 51603-1.

Irrespective of the capability of Conlift, local regulations may require the installation of a neutralisation unit, even for pH values of 2.5 or higher.

### 5.3 Operating mode

Conlift is designed for maximum 60 starts per hour. S3 (intermittent operation): 30 % according to DIN EN 0530 T1. This means that the system is running for 18 seconds and is stopped for 42 seconds.

### 5.4 Handling of condensates



If Conlift is to be connected to a pressure-reducing valve, observe the boiler manufacturer's instructions.



When cleaning heat exchangers and burner units of boiler systems, make sure that no acid and cleaning residuals enter the condensing unit.

Condensates from condensate boilers are very aggressive and will attack the material of the building's sewage system.

In order to protect the sewage system, we recommend that

you use the neutralisation unit pH+ Box. See section 9. [Technical data](#).

The local outlet regulations regarding condensates from boilers must be met.

### 5.5 Marking and approvals

#### Marking



#### Approvals



## 5.6 Accessories

The following accessories for Conlift are available from your local Grundfos supplier.

Accessory/ service part	Description	Product number
pH+ Box	Complete neutralisation unit including fitting accessories, neutralisation granulate and pH indicator.	97936176
Extension hose	6 metres of PVC hose with 10 mm internal diameter including one hose coupling.	97936177
Granulate refill package	Granulate, 4 x 1.4 kg.	97936178
Alarm PCB Conlift	Printed-circuit board (PCB) enabling additional pump start at alarm level or stop of boiler with acoustic alarm.	97936209

## 6. Control functions

The condensate runs by natural fall through a hose into the tank. See section [7. Servicing the product](#).

The liquid level in the tank is controlled automatically by a float switch. A micro switch in the float switch will start the pump when the liquid level reaches the start level, and it will stop the pump again when the liquid level has fallen to the stop level. The condensate is pumped through the outlet hose to the drain.

Conlift also has a safety overflow switch. This overflow switch can be connected to the condensate boiler and set to stop the boiler in case of an alarm.

Conlift has a thermal switch which stops the motor in case of overload. When the motor has cooled to normal temperature, it restarts automatically.

## 7. Servicing the product

Always use original accessories from Grundfos to ensure safe and reliable operation.

### WARNING

#### Electric shock



Death or serious personal injury  
- Before starting any work on the product, make sure that the power supply has been switched off and that it cannot be accidentally switched on.



Maintenance and service must be carried out by specially trained persons and according to local regulations.



If the power supply cable is damaged, it must be replaced by the manufacturer, the manufacturer's service partner or similarly qualified person.

### 7.1 Maintenance

Conlift does not require any special maintenance, but we recommend that you check operation and pipe connections at least once a year and that you clean the collecting tank, if necessary.

#### pH + Box

Check the state of the granulate regularly.

Check the level of acid in the condensate with the supplied pH indicator twice a year.

See section [7.2 Service](#).

### 7.2 Service

Thanks to the Conlift design, service can easily be performed in case of malfunction or blocked pump.



Electrical connection must be carried out by an authorized electrician.

### WARNING

#### Electric shock



Death or serious personal injury  
- Before starting any work on the product, make sure that the power supply has been switched off and that it cannot be accidentally switched on.

### 7.2.1 Conlift1 and Alarm PCB

See illustrations on page 10.

Make the following checks and clean the collecting tank, if necessary:

1. Disconnect the power supply.
2. Cut off the flow of condensate from the boiler or other application, or stop the flow of condensate to Conlift.
3. Make sure that the hoses are not mechanically or chemically damaged.
4. Remove the outlet hose by turning the bayonet coupling, and check the O-ring. The condensate in the hose will not run out due to the non-return valve.
5. If the condensate is running out of the hose, check and clean the non-return valve.
6. Press the side-locking catches and lift off the motor support. Place it in upright position.
7. Remove deposits, dirt, algae and incrustations under running water.

### 7.2.2 pH + Box

#### Neutralisation unit

See illustrations on page 11.

Check and clean the neutralisation unit drawer regularly.

Make the following checks, measure the pH level and clean the collecting tank, if necessary.

1. Disconnect the power supply.
2. Cut off the flow of condensate from the boiler or other application, or stop the flow of condensate to Conlift.
3. Check the pH value of the granulate in the drawer with the supplied pH indicator.
4. If the drawer is empty or the pH indicator indicates an acid level below 5, fill the drawer with neutralisation granulate (approx. 1.5 kg).
5. Make sure that the hoses are not mechanically or chemically damaged.
6. Remove the outlet hose by turning the bayonet coupling, and check the O-ring. The condensate in the hose will not run out due to the non-return valve.
7. If the condensate is running out of the hose, check and clean the non-return valve.
8. Press the side-locking catch and lift off the neutralisation unit.
9. Press the side-locking catches and lift off the motor support. Place it in upright position.
10. Remove deposits, dirt, algae and incrustations under running water.

### 7.3 Contaminated products

If a Conlift has been used for a liquid which is injurious to health or toxic, it will be classified as contaminated.

#### CAUTION

##### Biological hazard



- Minor or moderate personal injury
- Flush the product thoroughly with clean water and rinse the parts in water after dismantling.

The product will be classified as contaminated if it has been used for a liquid which is injurious to health or toxic.

If you request Grundfos to service the product, contact Grundfos with details about the liquid before returning the product for service. Otherwise, Grundfos can refuse to accept the product for service.

Any application for service must include details about the liquid.

Clean the product in the best possible way before you return it.

Costs of returning the product are to be paid by the customer.

## 8. Fault finding the product

### WARNING

#### Electric shock

- Death or serious personal injury
- Before starting any work on the product, make sure that the power supply has been switched off and that it cannot be accidentally switched on.



Fault	Cause	Remedy
1. The pump does not run.	a) No power supply.	Connect the power supply.
	b) A fuse is blown.	Replace the fuse (1 A slow-blow fuse).
	c) The power supply cable is damaged.	Repair or replace the cable. This must only be carried out by an authorised service workshop or by Grundfos.
	d) The thermal overload switch has tripped: <ul style="list-style-type: none"> <li>- The motor is not sufficiently cooled.</li> <li>- Deposits in the pump.</li> </ul>	Clean the cooling slots in the motor cover. <hr/> Clean the impeller, pump housing and the entire lifting station.
2. Reduced or no performance.	a) Outlet hose squeezed or broken.	Straighten the outlet hose or replace it. The bending radius of the hose should be at least 60 mm.
	b) The non-return valve does not open.	Remove the outlet connection, and clean the non-return valve.
	c) The motor fan cannot be turned freely.	Clean the pump housing and the impeller.
3. Frequent starts/stops.	a) The non-return valve does not close.	Remove the outlet connection, and clean the non-return valve.
	b) The inlet quantity is too high.	Make sure the inlet quantity is correct.
4. Alarm.	a) The condensate is not pumped out of the tank.	See points 1 and 2.



## 9. Technical data

### Supply voltage

1 x 230 VAC - 6 %/+ 6 %, 50 Hz, PE.

See the nameplate.

### Input power

P1 = 70 W.

### Input current

I = 0.65 A.

### Alarm connection

An external alarm can be connected via the safety overflow switch.

The cable can stand a control voltage of 250 VAC, 2.5 A.

### Cable lengths

Power supply cable: 2.0 metres.

Alarm cable: 1.7 metres.

### Storage temperature

When stored in dry rooms:

- Empty tank: -10 °C to +50 °C.
- Tank with condensate: above 0 °C (risk of frost not allowed).

### Ambient temperature

During operation: +5 °C to +35 °C.

### Liquid temperature

Average temperature: +50 °C.

### Maximum head

5.5 metres.

### Maximum flow rate

600 l/h.

### pH value of condensate

2.5 or higher.

### Density of condensate

Maximum 1000 kg/m<sup>3</sup>.

### Motor protection

- Thermal overload switch: +120 °C.
- Insulation class: F.

### Enclosure class

IP24.

### Weight

2.0 kg.

### Volume

- Tank volume: 2.65 litres.
- Useful volume: 0.9 litre.
- Alarm condition: 2.1 litres.
- Operating condition: 1.7 litres.

### Dimensions

See dimensional sketches on pages 13 to 14.

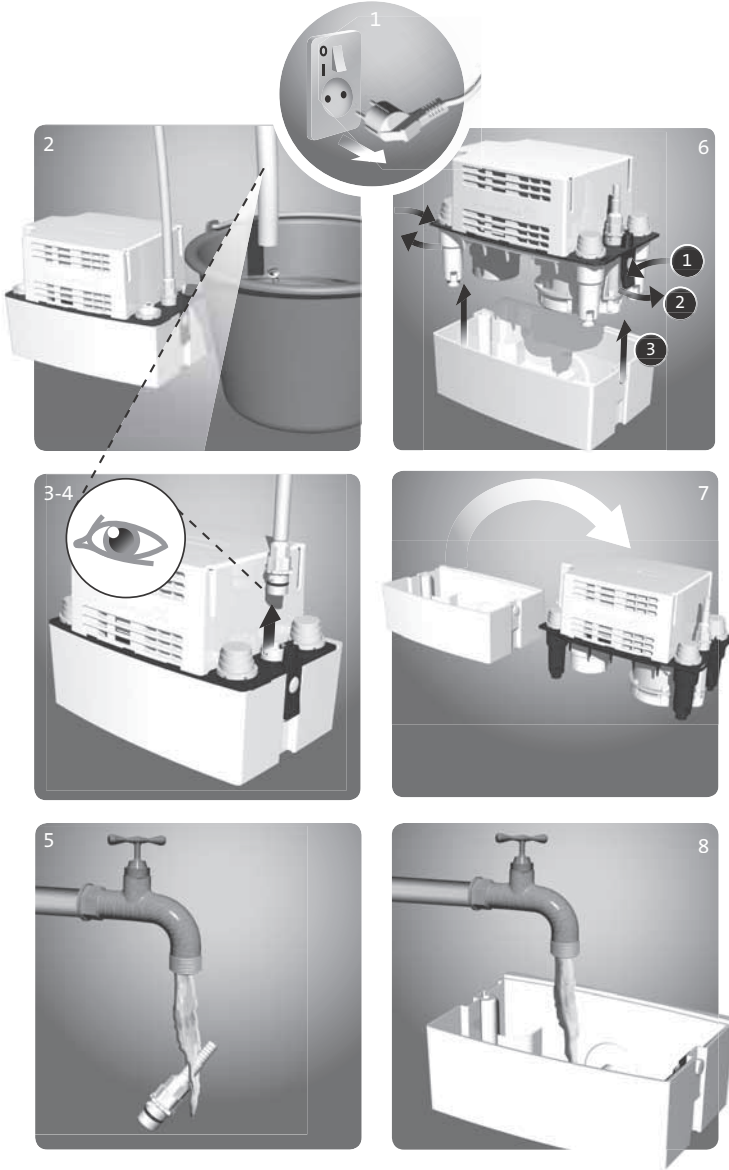
## 10. Disposal

This product or parts of it must be disposed of in an environmentally sound way:

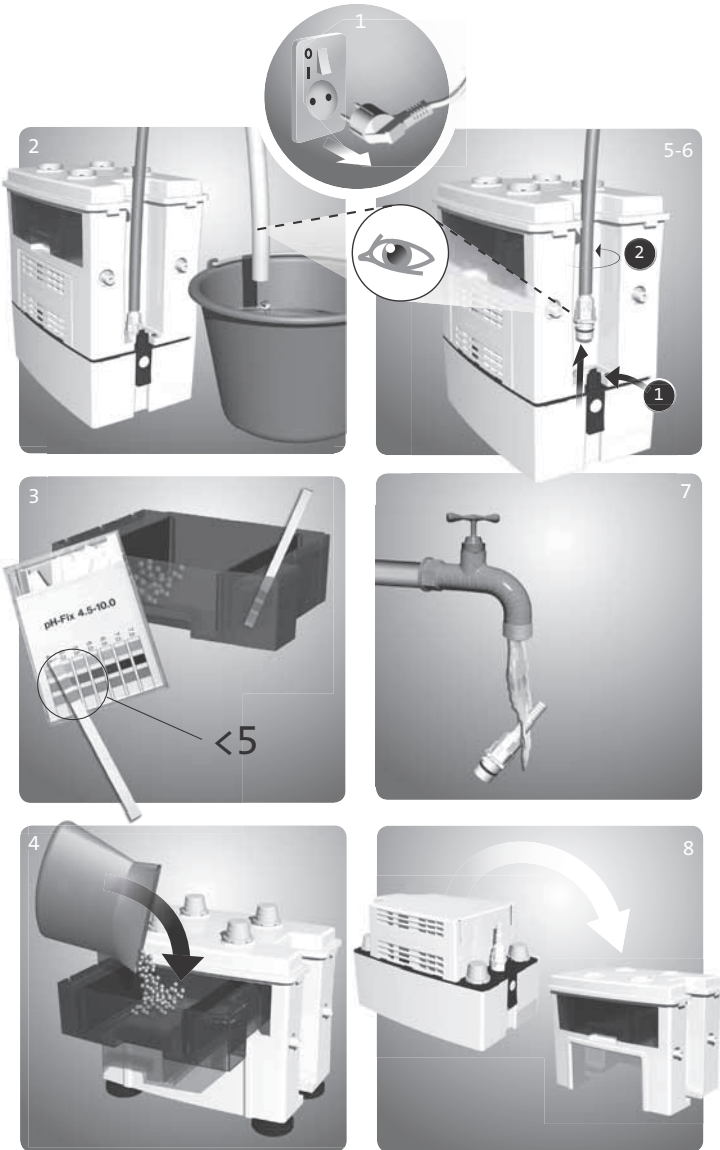
1. Use the public or private waste collection service.
2. If this is not possible, contact the nearest Grundfos company or service workshop.

# Appendix

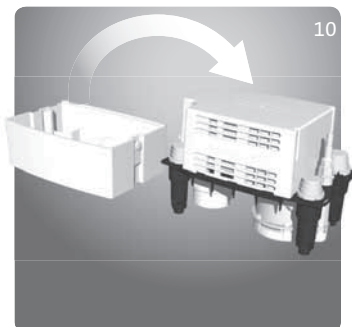
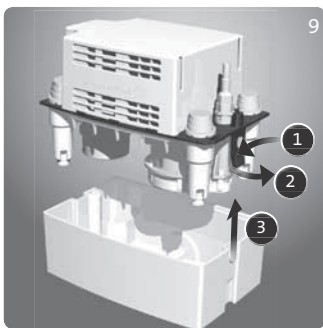
## Conlift1 and Conlift2



TIM05 1224 2411

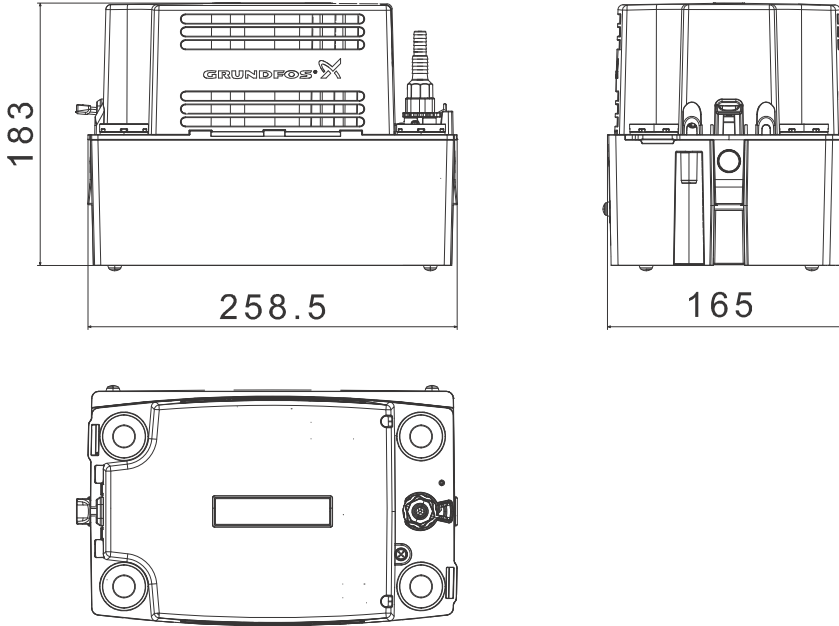


TM05 1225 2411

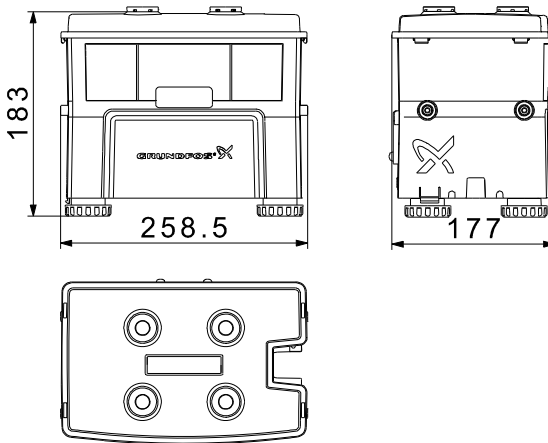


TM05 1226 2411

**Dimensions, Conlift1 and Conlift2**



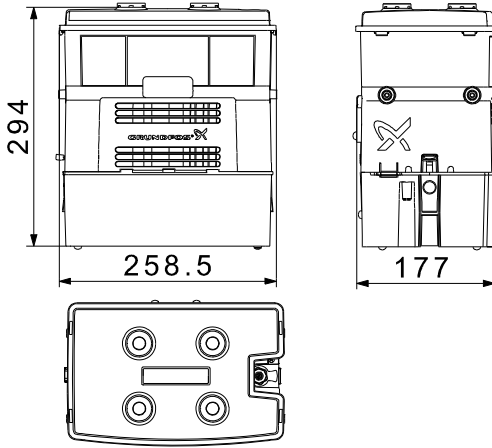
**Dimensions, Conlift pH+ Box**



TM05 1227 2411

TM05 1228 2411

Dimensions, pH+ Box



TN05 1229 2411



**Argentina**

Bombas GRUNDFOS de Argentina S.A.  
Ruta Panamericana km. 37.500 Centro  
Industrial Garin  
1619 Garin Pcia. de B.A.  
Phone: +54-3327 414 444  
Telefax: +54-3327 45 3190

**Australia**

GRUNDFOS Pumps Pty. Ltd.  
P.O. Box 2040  
Regency Park  
South Australia 5942  
Phone: +61-8-8461-4611  
Telefax: +61-8-8340 0155

**Austria**

GRUNDFOS Pumpen Vertrieb  
Ges.m.b.H.  
Grundfosstraße 2  
A-5082 Grödig/Salzburg  
Tel.: +43-6246-883-0  
Telefax: +43-6246-883-30

**Belgium**

N.V. GRUNDFOS Bellux S.A.  
Boomsesteenweg 81-83  
B-2630 Aartselaar  
Tél.: +32-3-870 7300  
Télécopie: +32-3-870 7301

**Belarus**

Представительство ГРУНДФОС в  
Минске  
220125, Минск  
ул. Шафарнянская, 11, оф. 56, БЦ  
«Порт»  
Тел.: +7 (375 17) 286 39 72/73  
Факс: +7 (375 17) 286 39 71  
E-mail: minsk@grundfos.com

**Bosnia and Herzegovina**

GRUNDFOS Sarajevo  
Zmaja od Bosne 7-7A,  
BH-71000 Sarajevo  
Phone: +387 33 592 480  
Telefax: +387 33 590 465  
www.ba.grundfos.com  
e-mail: grundfos@bih.net.ba

**Brazil**

BOMBAS GRUNDFOS DO BRASIL  
Av. Humberto de Alencar Castelo  
Branco, 630  
CEP 09850 - 300  
São Bernardo do Campo - SP  
Phone: +55-11 4393 5533  
Telefax: +55-11 4343 5015

**Bulgaria**

Grundfos Bulgaria EOOD  
Slatina District  
Iztochna Tangenta street no. 100  
BG - 1592 Sofia  
Tel. +359 2 49 22 200  
Fax. +359 2 49 22 201  
email: bulgaria@grundfos.bg

**Canada**

GRUNDFOS Canada Inc.  
2941 Brighton Road  
Oakville, Ontario  
L6H 6C9  
Phone: +1-905 829 9533  
Telefax: +1-905 829 9512

**China**

GRUNDFOS Pumps (Shanghai) Co. Ltd.  
10F The Hub, No. 33 Suhong Road  
Minhang District  
Shanghai 201106  
PRC  
Phone: +86 21 612 252 22  
Telefax: +86 21 612 253 33

**COLOMBIA**

GRUNDFOS Colombia S.A.S.  
Km 1.5 vía Siberia-Cota Conj. Potrero  
Chico,  
Parque Empresarial Arcos de Cota Bod.  
1A.  
Cota, Cundinamarca  
Phone: +57(1)-2913444  
Telefax: +57(1)-8764586

**Croatia**

GRUNDFOS CROATIA d.o.o.  
Buzinski prilaz 38, Buzin  
HR-10010 Zagreb  
Phone: +385 1 6595 400  
Telefax: +385 1 6595 499  
www.hr.grundfos.com

**GRUNDFOS Sales Czechia and Slovakia s.r.o.**

Čajkovského 21  
779 00 Olomouc  
Phone: +420-585-716 111

**Denmark**

GRUNDFOS DK A/S  
Martin Bachs Vej 3  
DK-8850 Bjerringbro  
Tlf.: +45-87 50 50 50  
Telefax: +45-87 50 51 51  
E-mail: info\_GDK@grundfos.com  
www.grundfos.com/DK

**Estonia**

GRUNDFOS Pumps Eesti OÜ  
Peterburi tee 92G  
11415 Tallinn  
Tel: + 372 606 1690  
Fax: + 372 606 1691

**Finland**

OY GRUNDFOS Pumput AB  
Trukkikuja 1  
FI-01360 Vantaa  
Phone: +358-(0) 207 889 500

**France**

Pompes GRUNDFOS Distribution S.A.  
Parc d'Activités de Chesnes  
57, rue de Malacombe  
F-38290 St. Quentin Fallavier (Lyon)  
Tél.: +33-4 74 82 15 15  
Télécopie: +33-4 74 94 10 51

**Germany**

GRUNDFOS GMBH  
Schlüterstr. 33  
40699 Erkrath  
Tel.: +49-(0) 211 929 69-0  
Telefax: +49-(0) 211 929 69-3799  
e-mail: infoservice@grundfos.de  
Service in Deutschland:  
e-mail: kundendienst@grundfos.de

**Greece**

GRUNDFOS Hellas A.E.B.E.  
20th km. Athinon-Markopoulou Av.  
P.O. Box 71  
GR-19002 Peania  
Phone: +0030-210-66 83 400  
Telefax: +0030-210-66 46 273

**Hong Kong**

GRUNDFOS Pumps (Hong Kong) Ltd.  
Unit 1, Ground floor  
Siu Wai Industrial Centre  
29-33 Wing Hong Street &  
68 King Lam Street, Cheung Sha Wan  
Kowloon  
Phone: +852-27861706 / 27861741  
Telefax: +852-27858664

**Hungary**

GRUNDFOS Hungária Kft.  
Park u. 8  
H-2045 Törökbálint,  
Phone: +36-23 511 110  
Telefax: +36-23 511 111

**India**

GRUNDFOS Pumps India Private  
Limited  
118 Old Mahabalipuram Road  
Thoraiakkam  
Chennai 600 096  
Phone: +91-44 2496 6800

**Indonesia**

PT. GRUNDFOS POMPA  
Graha Intirub Lt. 2 & 3  
Jln. Cililitan Besar No.454. Makasar,  
Jakarta Timur  
ID-Jakarta 13650  
Phone: +62 21-469-51900  
Telefax: +62 21-460 6910 / 460 6901

**Ireland**

GRUNDFOS (Ireland) Ltd.  
Unit A, Merrywell Business Park  
Ballymount Road Lower  
Dublin 12  
Phone: +353-1-4089 800  
Telefax: +353-1-4089 830

**Italy**

GRUNDFOS Pompe Italia S.r.l.  
Via Gran Sasso 4  
I-20060 Truccazzano (Milano)  
Tel.: +39-02-95838112  
Telefax: +39-02-95309290 / 95838461

**Japan**

GRUNDFOS Pumps K.K.  
1-2-3, Shin-Miyakoda, Kita-ku,  
Hamamatsu  
431-2103 Japan  
Phone: +81 53 428 4760  
Telefax: +81 53 428 5005

**Korea**

GRUNDFOS Pumps Korea Ltd.  
6th Floor, Aju Building 679-5  
Yeoksam-dong, Kangnam-ku, 135-916  
Seoul, Korea  
Phone: +82-2-5317 600  
Telefax: +82-2-5633 725

**Latvia**

SIA GRUNDFOS Pumps Latvia  
Deglava biznesa centrs  
Augusta Deglava iela 60, LV-1035, Rīga,  
Tālr.: + 371 714 9640, 7 149 641  
Faks: + 371 914 9646

**Lithuania**

GRUNDFOS Pumps UAB  
Smolensko g. 6  
LT-03201 Vilnius  
Tel: + 370 52 395 430  
Fax: + 370 52 395 431



**Malaysia**

GRUNDFOS Pumps Sdn. Bhd.  
7 Jalan Peguam U1/25  
Glenmarie Industrial Park  
40150 Shah Alam  
Selangor  
Phone: +60-3-5569 2922  
Telefax: +60-3-5569 2866

**Mexico**

Bombas GRUNDFOS de México S.A. de  
C.V.  
Boulevard TLC No. 15  
Parque Industrial Stiva Aeropuerto  
Apodaca, N.L. 66600  
Phone: +52-81-8144 4000  
Telefax: +52-81-8144 4010

**Netherlands**

GRUNDFOS Netherlands  
Veluwezoom 35  
1326 AE Almere  
Postbus 22015  
1302 CA ALMERE  
Tel.: +31-88-478 6336  
Telefax: +31-88-478 6332  
E-mail: info\_gnl@grundfos.com

**New Zealand**

GRUNDFOS Pumps NZ Ltd.  
17 Beatrice Tinsley Crescent  
North Harbour Industrial Estate  
Albany, Auckland  
Phone: +64-9-415 3240  
Telefax: +64-9-415 3250

**Norway**

GRUNDFOS Pumper A/S  
Strømsveien 344  
Postboks 235, Leirdal  
N-1011 Oslo  
Tlf.: +47-22 90 47 00  
Telefax: +47-22 32 21 50

**Poland**

GRUNDFOS Pompy Sp. z o.o.  
ul. Klonowa 23  
Baranowo k. Poznania  
PL-62-081 Przeźmierowo  
Tel: (+48-61) 650 13 00  
Fax: (+48-61) 650 13 50

**Portugal**

Bombas GRUNDFOS Portugal, S.A.  
Rua Calvet de Magalhães, 241  
Apartado 1079  
P-2770-153 Paço de Arcos  
Tel.: +351-21-440 76 00  
Telefax: +351-21-440 76 90

**Romania**

GRUNDFOS Pompe România SRL  
Bd. Biruintei, nr 103  
Pantelimon county Ilfov  
Phone: +40 21 200 4100  
Telefax: +40 21 200 4101  
E-mail: romania@grundfos.ro

**Russia**

ООО Грундфос Россия  
ул. Школьная, 39-41  
Москва, RU-109544, Russia  
Тел. (+7) 495 564-88-00 (495)  
737-30-00  
Факс (+7) 495 564 8811  
E-mail grundfos.moscow@grundfos.com

**Serbia**

Grundfos Srbija d.o.o.  
Omladinskih brigada 90b  
11070 Novi Beograd  
Phone: +381 11 2258 740  
Telefax: +381 11 2281 769  
www.rs.grundfos.com

**Singapore**

GRUNDFOS (Singapore) Pte. Ltd.  
25 Jalan Tukang  
Singapore 619264  
Phone: +65-6681 9688  
Telefax: +65-6681 9689

**Slovakia**

GRUNDFOS s.r.o.  
Prievozská 4D  
821 09 BRATISLAVA  
Phona: +421 2 5020 1426  
sk.grundfos.com

**Slovenia**

GRUNDFOS LJUBLJANA, d.o.o.  
Leskovoška 9e, 1122 Ljubljana  
Phone: +386 (0) 1 568 06 10  
Telefax: +386 (0) 1 568 06 19  
E-mail: tehnika-si@grundfos.com

**South Africa**

GRUNDFOS (PTY) LTD  
Corner Mountjoy and George Allen  
Roads  
Wilbart Ext. 2  
Bedfordview 2008  
Phone: (+27) 11 579 4800  
Fax: (+27) 11 455 6066  
E-mail: lsmart@grundfos.com

**Spain**

Bombas GRUNDFOS España S.A.  
Camino de la Fuentequilla, s/n  
E-28110 Algete (Madrid)  
Tel.: +34-91-848 8800  
Telefax: +34-91-628 0465

**Sweden**

GRUNDFOS AB  
Box 333 (Lunnagårdsgatan 6)  
431 24 Mölndal  
Tel.: +46 31 332 23 000  
Telefax: +46 31 331 94 60

**Switzerland**

GRUNDFOS Pumpen AG  
Bruggacherstrasse 10  
CH-8117 Fällanden/ZH  
Tel.: +41-44-806 8111  
Telefax: +41-44-806 8115

**Taiwan**

GRUNDFOS Pumps (Taiwan) Ltd.  
7 Floor, 219 Min-Chuan Road  
Taichung, Taiwan, R.O.C.  
Phone: +886-4-2305 0868  
Telefax: +886-4-2305 0878

**Thailand**

GRUNDFOS (Thailand) Ltd.  
92 Chaloeun Phrakiat Rama 9 Road,  
Dokmai, Pravej, Bangkok 10250  
Phone: +66-2-725 8999  
Telefax: +66-2-725 8998

**Turkey**

GRUNDFOS POMPA San. ve Tic. Ltd.  
Sti.  
Gebze Organize Sanayi Bölgesi  
İhsan dede Caddesi,  
2. yol 200. Sokak No. 204  
41490 Gebze/ Kocaeli  
Phone: +90 - 262-679 7979  
Telefax: +90 - 262-679 7905  
E-mail: satis@grundfos.com

**Ukraine**

Бізнес Центр Європа  
Столичне шосе, 103  
м. Київ, 03131, Україна  
Телефон: (+38 044) 237 04 00  
Факс.: (+38 044) 237 04 01  
E-mail: ukraine@grundfos.com

**United Arab Emirates**

GRUNDFOS Gulf Distribution  
P.O. Box 16768  
Jebel Ali Free Zone  
Dubai  
Phone: +971 4 8815 166  
Telefax: +971 4 8815 136

**United Kingdom**

GRUNDFOS Pumps Ltd.  
Grovebury Road  
Leighton Buzzard/Beds. LU7 4TL  
Phone: +44-1525-850000  
Telefax: +44-1525-850011

**U.S.A.**

GRUNDFOS Pumps Corporation  
17100 West 118th Terrace  
Olathe, Kansas 66061  
Phone: +1-913-227-3400  
Telefax: +1-913-227-3500

**Uzbekistan**

Grundfos Tashkent, Uzbekistan The  
Representative Office of Grundfos  
Kazakhstan in Uzbekistan  
38a, Oybek street, Tashkent  
Телефон: (+998) 71 150 3290 / 71 150  
3291  
Факс: (+998) 71 150 3292

Addresses Revised 09.08.2017

be think innovate

---

**97936207** 1117

ECM: 1222640

The name Grundfos, the Grundfos logo, and **be think innovate** are registered trademarks owned by Grundfos Holding A/S or Grundfos A/S, Denmark. All rights reserved worldwide. © Copyright Grundfos Holding A/S

[www.grundfos.com](http://www.grundfos.com)

**GRUNDFOS** 

[www.motralec.com](http://www.motralec.com) / [service-commercial@motralec.com](mailto:service-commercial@motralec.com) / 01.39.97.65.10