



# Technical specification

---

Submersible pump P 7045, 50 Hz



Flygt



ITT Industries



## P 7045

### Product

Axial-flow pump for transportation of large volumes of water, containing minimum debris and fibres, at low heads.

### Denomination

Product code 7045/600  
Installation L

### Process data

Liquid temperature max +40 °C  
Depth of immersion max 20 m  
The pH of the pumped liquid pH 6 - 11  
Liquid density max. 1100 kg/m<sup>3</sup>  
Pump (ball-) throughlet max. 85 mm

### Motor data

Frequency 50 Hz  
Insulation class H (+180 °C)  
Voltage variation  
- continuously running max ± 5%  
- intermittent running max ± 10%  
Voltage imbalance between phases max 2%  
No. of starts/hour max 15

### Cable

SUBCAB® To be dimensioned by ITT Flygt

### Monitoring equipment

Thermal contacts opening temperature 140 °C

### Material

Pump housing Cast iron  
Stator housing Cast iron  
O-rings Nitrile rubber  
Propeller Cast iron

#### Mechanical face seals

Alternative	Inner seal	Outer seal
1	Corrosion resistant cemented carbide/ Corrosion resistant cemented carbide	Corrosion resistant cemented carbide/ Corrosion resistant cemented carbide

#### Shaft

Alternative	Material
1	Steel
2	Stainless steel

#### Surface Treatment

All cast parts are primed with a water-borne primer. The finishing coat is a high-solid two pack paint.

### Weight

Excluding power cable, including drive unit.

Drive unit	Installation			
	L			
600 <sup>1)</sup>	410 kg			
600 <sup>2)</sup>	430 kg			

<sup>1)</sup> stator 27-20-XX

<sup>2)</sup> stator 27-26-XX

### Option

Other cables  
Surface treatment Epoxy treatment  
Zinc anodes  
Leakage sensor in junction box

### Accessories

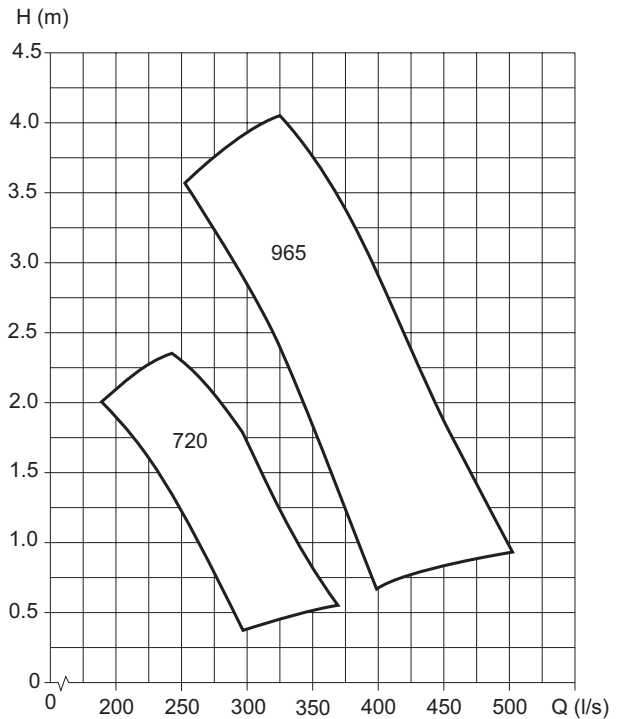
Discharge connections, adapters, hose connections and other mechanical accessories.

Electrical accessories such as pump controller, control panels, starters, monitoring relays.

See separate booklet or [www.flygt.com](http://www.flygt.com), for further information.

### Motor rating and performance curve

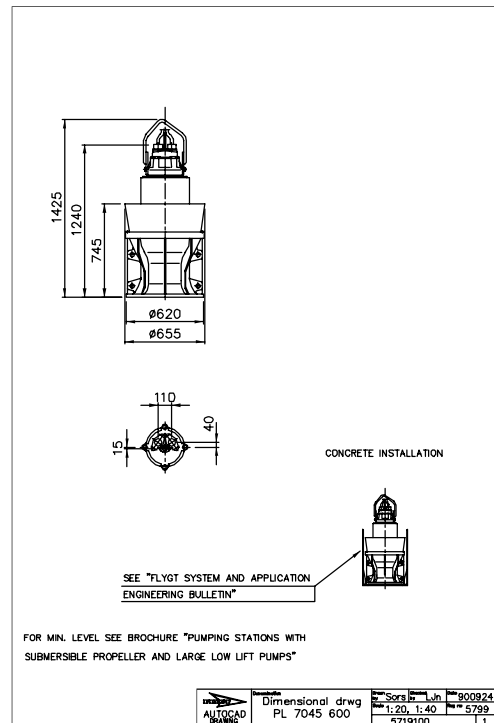
Curve/Impeller No	Drive unit	Rated power, kW	Rated current, A	Starting current, A	Power factor cos φ	Ex proof version available
<b>400 V, 50 Hz, 3 ~, 720 r/min</b>						
720	600	11	26	139	0,73	
<b>400 V, 50 Hz, 3 ~, 965 r/min</b>						
965	600	17	35	221	0,82	
965	600	22	46	315	0,80	



### Dimensional drawing

All drawings are available as Acrobat documents (.pdf) and AutoCad drawings (.dwg). Download the drawings from [www.flygt.com](http://www.flygt.com) or contact your ITT Flygt representative for more information.

All dimensions are in mm.





[www.flygt.com](http://www.flygt.com)