

Technical specification

Submersible pump P 7045, 50 Hz





P 7045

Product

Axial-flow pump for transportation of large volumes of water, containing minimum debris and fibres, at low heads.

Denomination

Product code 7045/600
Installation L

Process data

Liquid temperature max +40 °C
Depth of immersion max 20 m
The pH of the pumped liquid pH 6 - 11
Liquid density max. 1100 kg/m³
Pump (ball-) throughlet max. 85 mm

Motor data

Frequency 50 Hz
Insulation class H (+180 °C)
Voltage variation
- continuously running max ± 5%
- intermittent running max ± 10%
Voltage imbalance between phases max 2%
No. of starts/hour max 15

Cable

SUBCAB® To be dimensioned by ITT Flygt

Monitoring equipment

Thermal contacts opening temperature 140 °C

Material

Pump housing Cast iron
Stator housing Cast iron
O-rings Nitrile rubber
Propeller Cast iron

Mechanical face seals

Alternative	Inner seal	Outer seal
1	Corrosion resistant cemented carbide/ Corrosion resistant cemented carbide	Corrosion resistant cemented carbide/ Corrosion resistant cemented carbide

Shaft

Alternative	Material
1	Steel
2	Stainless steel

Surface Treatment

All cast parts are primed with a water-borne primer. The finishing coat is a high-solid two pack paint.

Weight

Excluding power cable, including drive unit.

Drive unit	Installation			
	L			
600 ¹⁾	410 kg			
600 ²⁾	430 kg			

¹⁾ stator 27-20-XX

²⁾ stator 27-26-XX

Option

Other cables
Surface treatment Epoxy treatment
Zinc anodes
Leakage sensor in junction box

Accessories

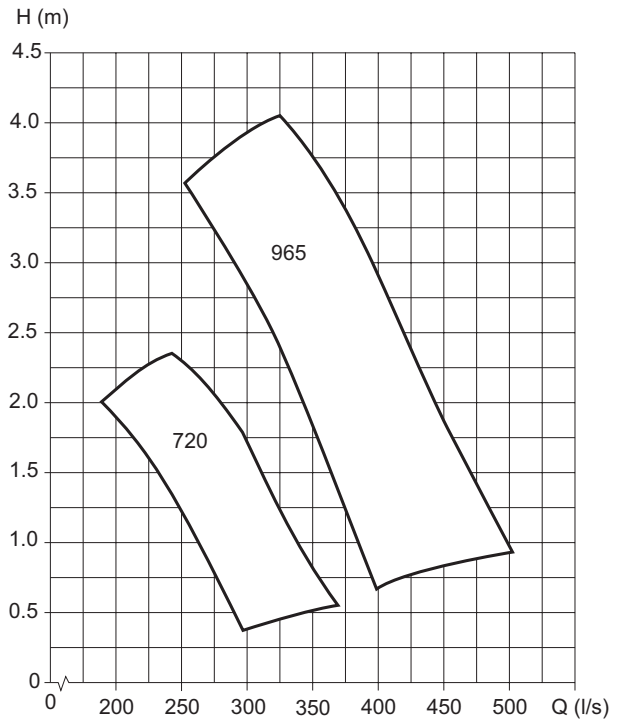
Discharge connections, adapters, hose connections and other mechanical accessories.

Electrical accessories such as pump controller, control panels, starters, monitoring relays.

See separate booklet or www.flygt.com, for further information.

Motor rating and performance curve

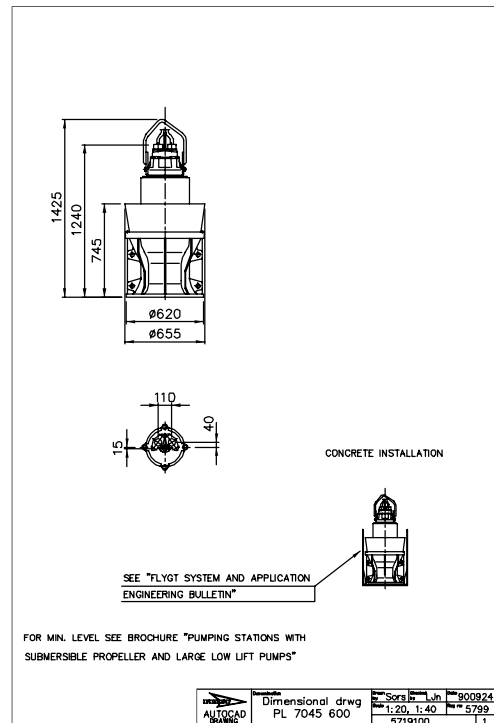
Curve/Impeller No	Drive unit	Rated power, kW	Rated current, A	Starting current, A	Power factor cos φ	Ex proof version available
400 V, 50 Hz, 3 ~, 720 r/min						
720	600	11	26	139	0,73	
400 V, 50 Hz, 3 ~, 965 r/min						
965	600	17	35	221	0,82	
965	600	22	46	315	0,80	



Dimensional drawing

All drawings are available as Acrobat documents (.pdf) and AutoCad drawings (.dwg). Download the drawings from www.flygt.com or contact your ITT Flygt representative for more information.

All dimensions are in mm.





www.flygt.com