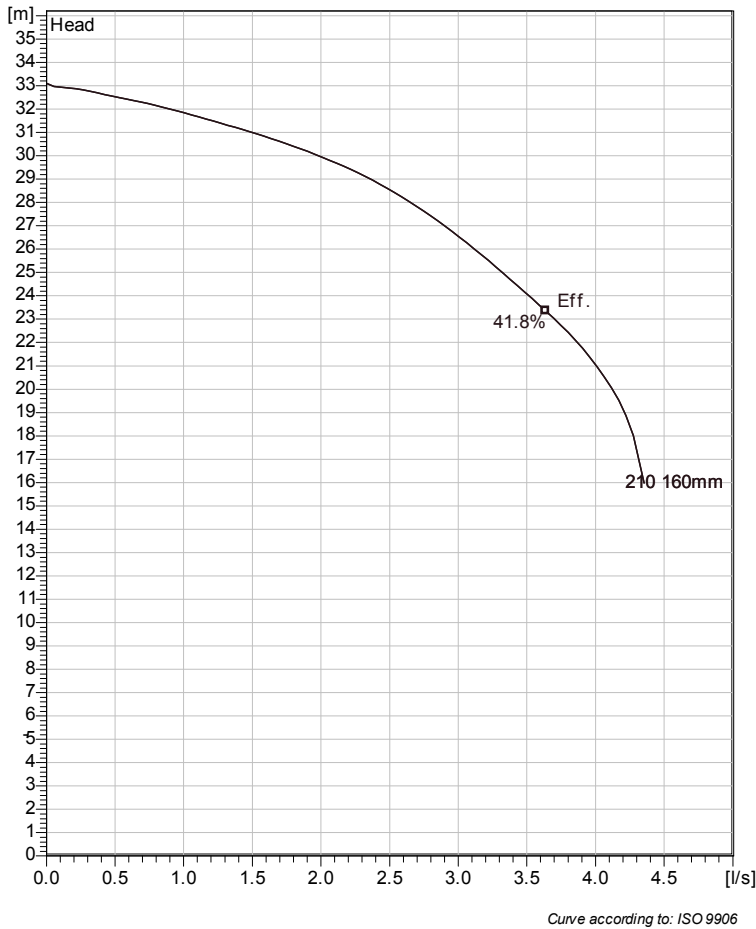


# MP 3068 HT 3~ 210

## Technical specification



Note: Picture might not correspond to the current configuration.

### General

Semi-open multi-channel impellers with integral grinder cutter in single volute casing for liquids containing solids and fibres.

### Impeller

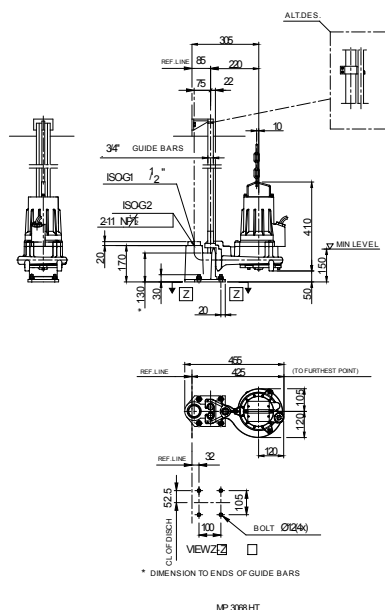
Impeller material	Grey cast iron
Outlet width	40 mm
Inlet diameter	
Impeller diameter	160 mm
Number of blades	10
Throughlet diameter	6 mm

### Motor

Motor #	M3068.170 13-10-2BB-W 2,4KW
Stator variant	
Frequency	50 Hz
Rated voltage	190 V
Number of poles	2
Phases	3~
Rated power	2.4 kW
Rated current	11 A
Starting current	53 A
Rated speed	2715 rpm
Power factor	
1/1 Load	0.85
3/4 Load	0.79
1/2 Load	0.67
Efficiency	
1/1 Load	76.5 %
3/4 Load	79.5 %
1/2 Load	80.0 %

### Configuration

### Installation: P - Semi permanent, Wet



Project	Project ID	Created by	Created on	Last update
			2012-10-25	

## MP 3068 HT 3~ 210

### Performance curve

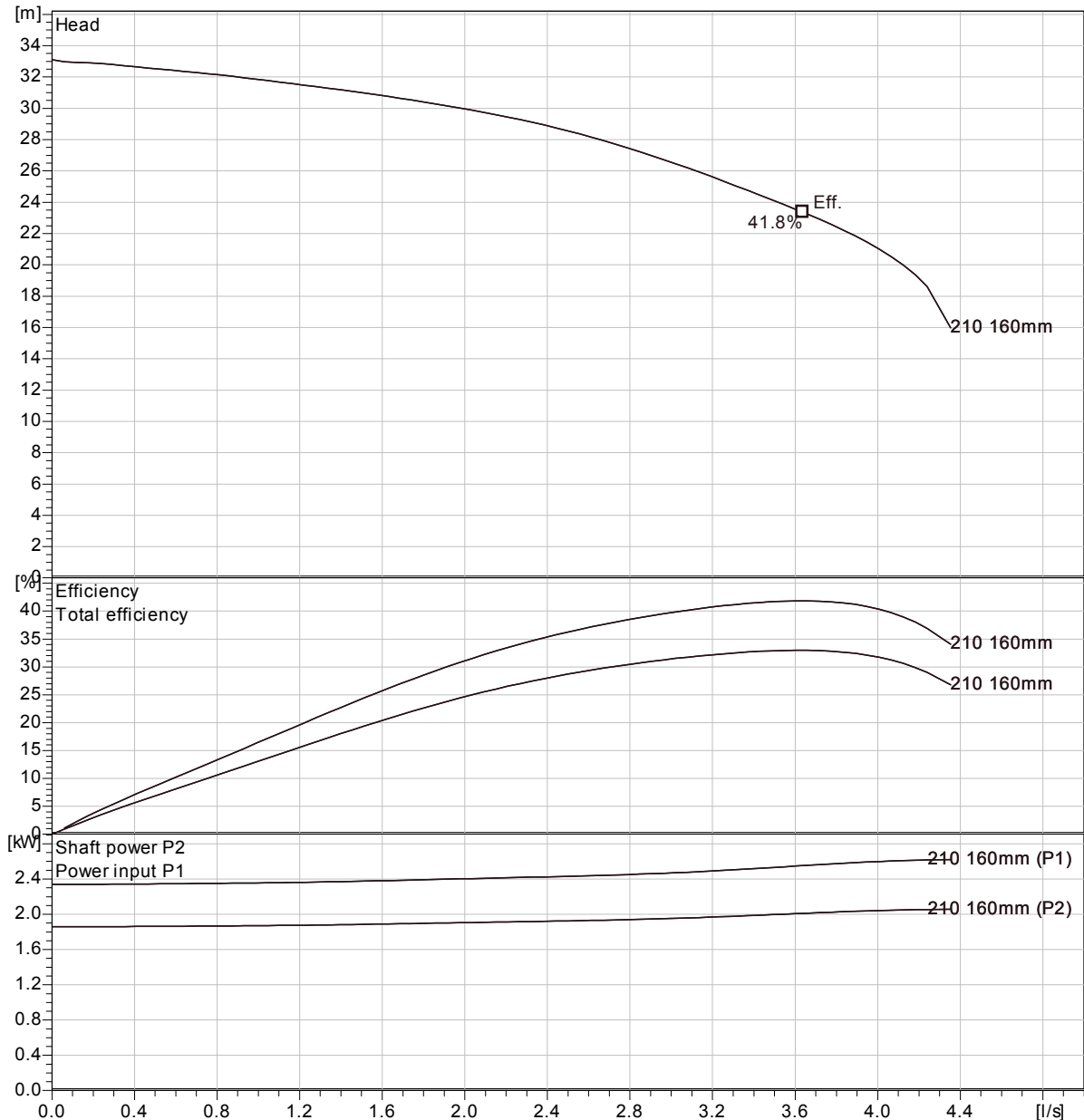
#### Pump

Outlet width	40 mm
Inlet diameter	160 mm
Impeller diameter	10
Number of blades	6 mm
Throughlet diameter	6 mm

#### Motor

Motor #	M3068.170 13-10-2BB-W 2,4KW
Stator variant	
Frequency	50 Hz
Rated voltage	190 V
Number of poles	2
Phases	3~
Rated power	2.4 kW
Rated current	11 A
Starting current	53 A
Rated speed	2715 rpm

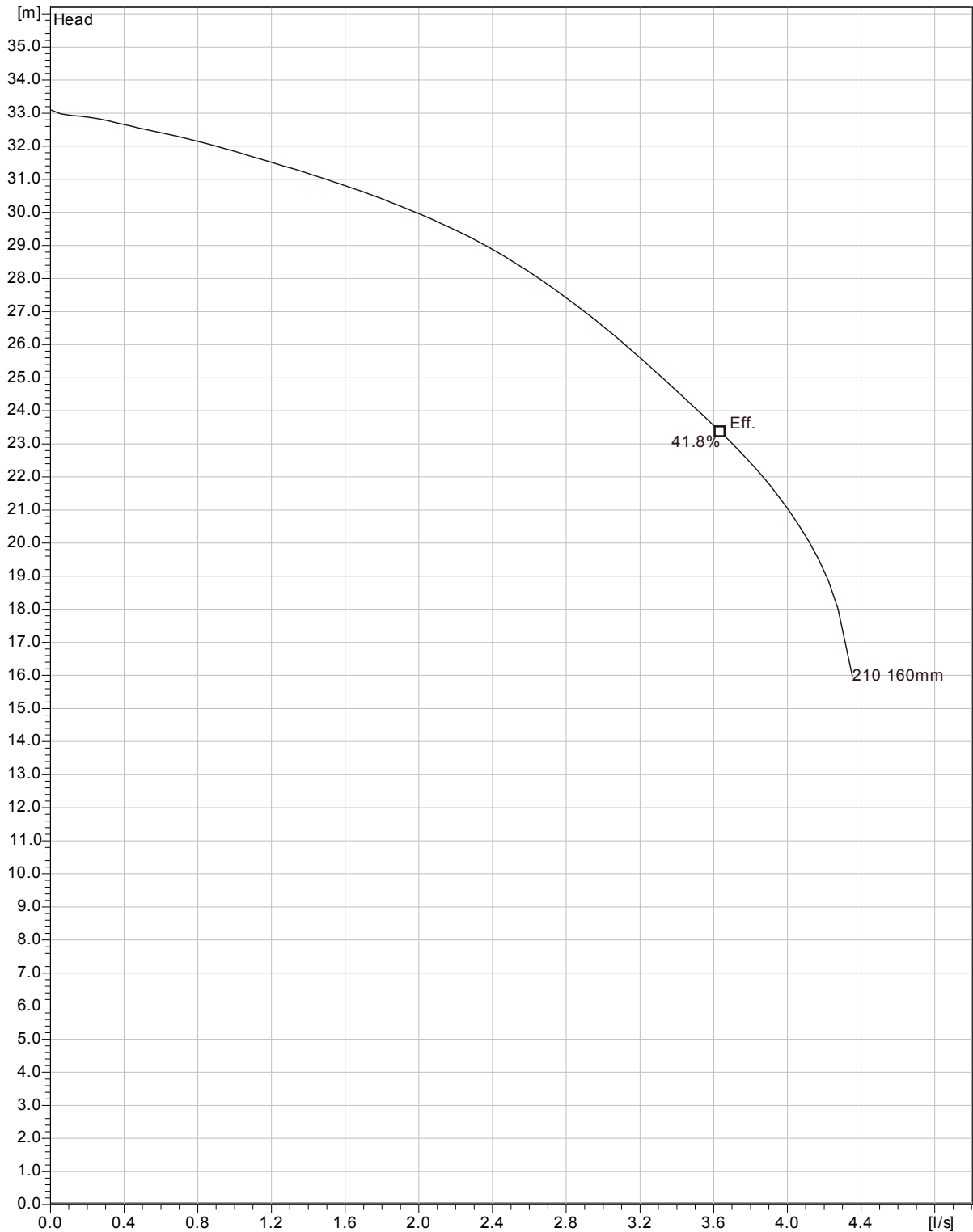
Power factor	
1/1 Load	0.85
3/4 Load	0.79
1/2 Load	0.67
Efficiency	
1/1 Load	76.5 %
3/4 Load	79.5 %
1/2 Load	80.0 %



Curve according to: ISO 9906

Project	Project ID	Created by	Created on 2012-10-25	Last update
---------	------------	------------	--------------------------	-------------

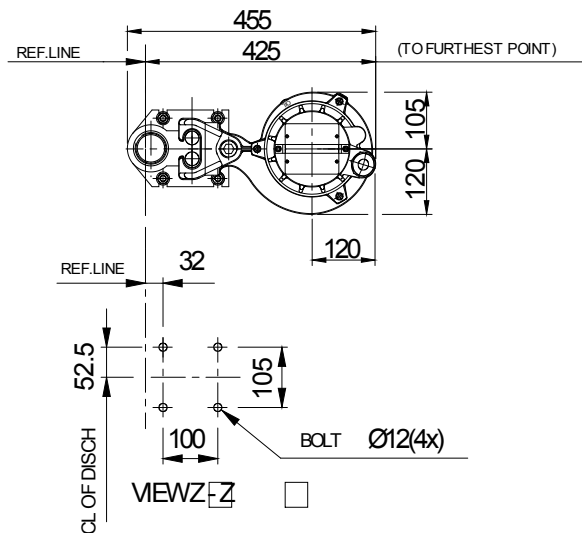
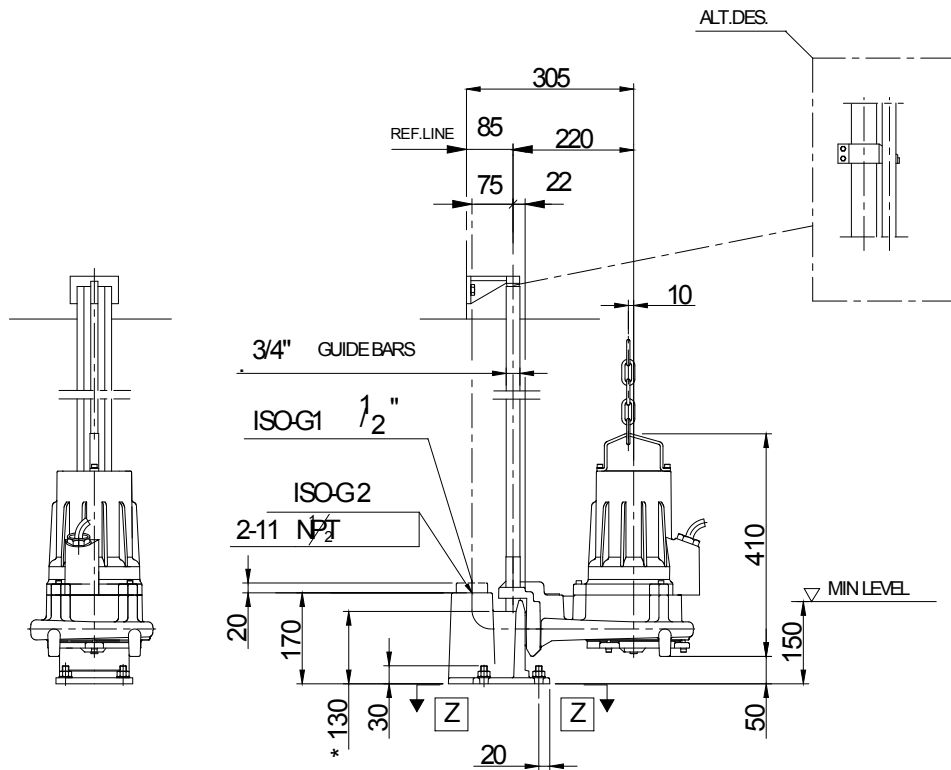
**MP 3068 HT 3~ 210**  
**Duty Analysis**



Curve according to: ISO 9906

Project	Project ID	Created by	Created on	Last update
			2012-10-25	

**MP 3068 HT 3~ 210**  
Dimensional drawing



\* DIMENSION TO ENDS OF GUIDE BARS

MP 3068 HT

Project	Project ID	Created by	Created on	Last update
			2012-10-25	