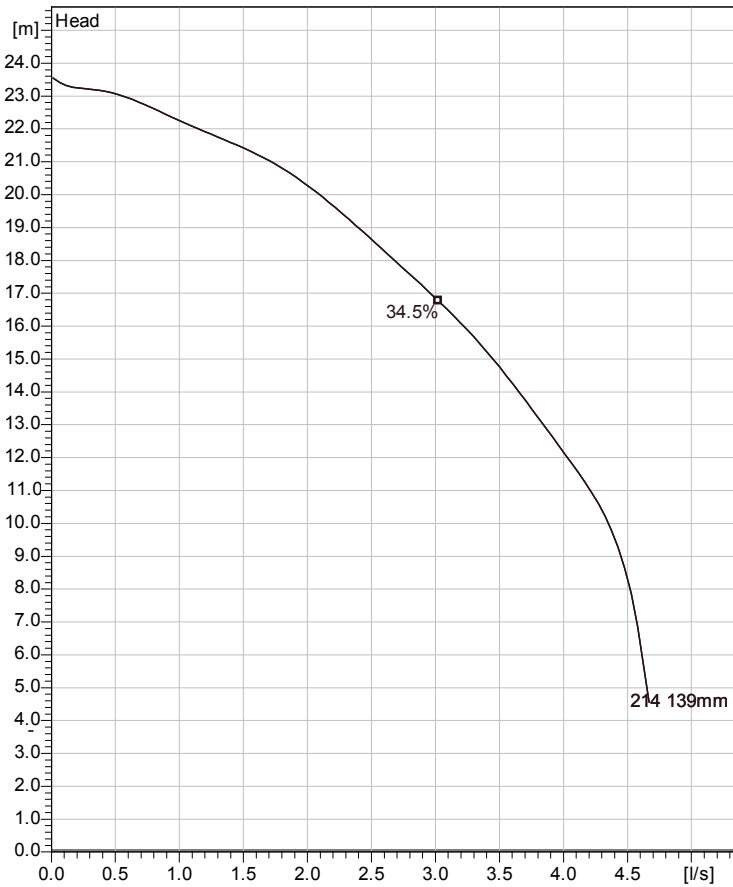


MF 3068 HT 3~ 214
Technical specification



Curve according to: ISO 9906



Note: Picture might not correspond to the current configuration.

General

Semi-open multi-channel impellers with integral grinder cutter in single volute casing for liquids containing solids and fibres.

Impeller

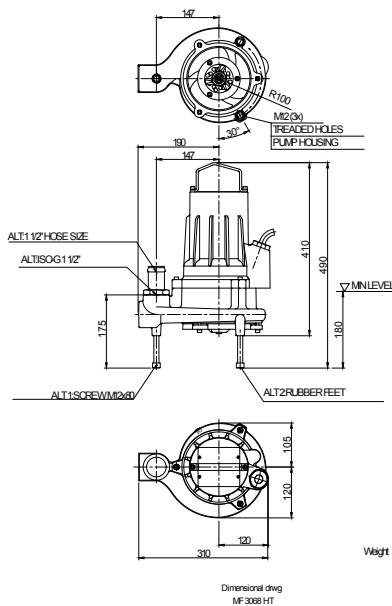
Impeller material	Grey cast iron
Outlet width	40 mm
Inlet diameter	
Impeller diameter	139 mm
Number of blades	10
Throughlet diameter	6 mm

Motor

Motor #	M3068.170 13-08-2BB-W 1,7KW
Stator variant	
Frequency	50 Hz
Rated voltage	190 V
Number of poles	2
Phases	3~
Rated power	1.7 kW
Rated current	8 A
Starting current	36 A
Rated speed	2705 rpm
Power factor	
1/1 Load	0.86
3/4 Load	0.80
1/2 Load	0.68
Efficiency	
1/1 Load	74.5 %
3/4 Load	78.0 %
1/2 Load	78.5 %

Configuration

Installation: F - Free standing Semi permanent, Wet



Project	Project ID	Created by	Created on 2012-10-25	Last update
---------	------------	------------	--------------------------	-------------

MF 3068 HT 3~ 214

Performance curve

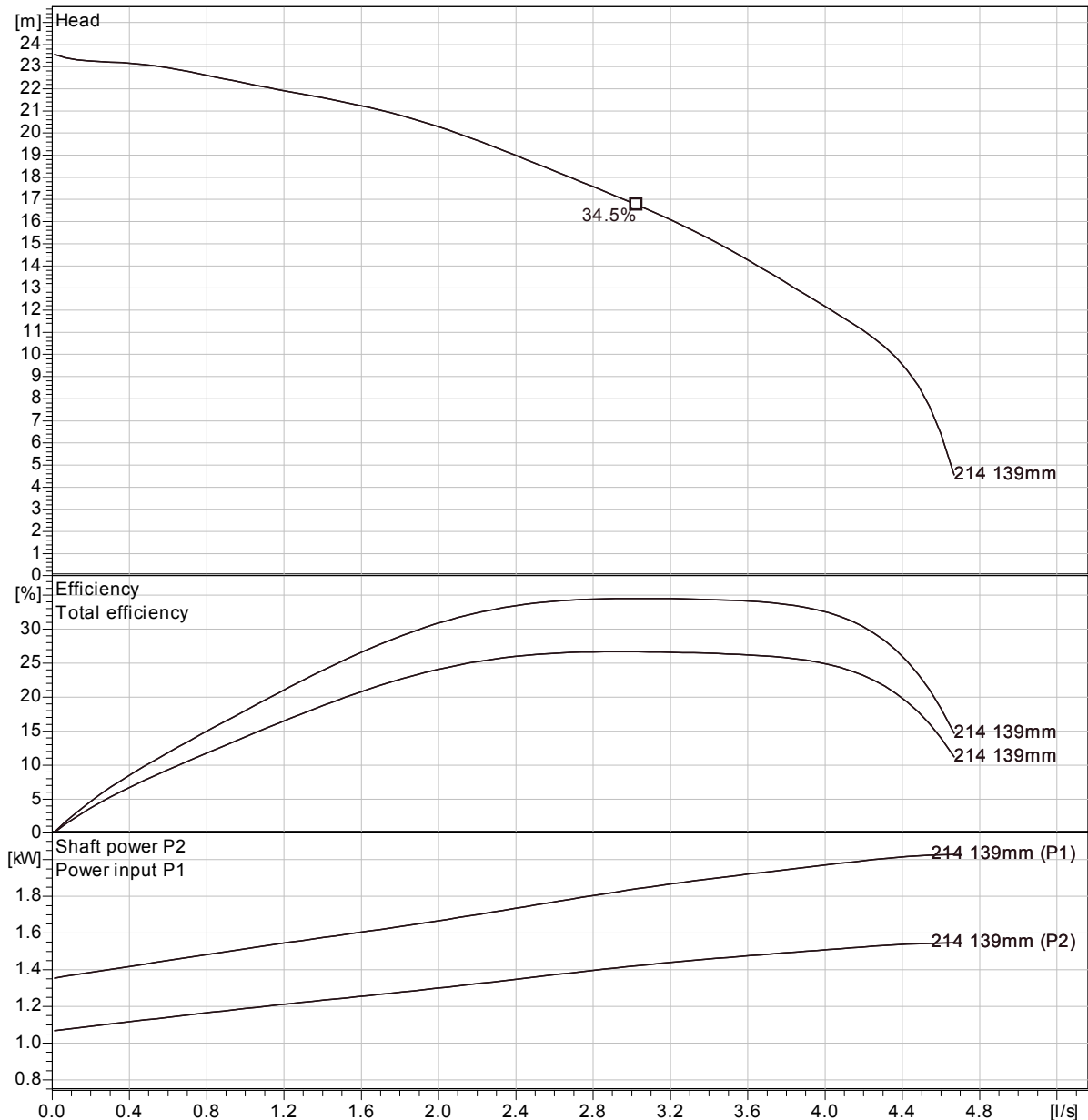
Pump

Outlet width	40 mm
Inlet diameter	139 mm
Impeller diameter	10
Number of blades	6 mm
Throughlet diameter	

Motor

Motor #	M3068.170 13-08-2BB-W 1,7KW
Stator variant	
Frequency	50 Hz
Rated voltage	190 V
Number of poles	2
Phases	3~
Rated power	1.7 kW
Rated current	8 A
Starting current	36 A
Rated speed	2705 rpm

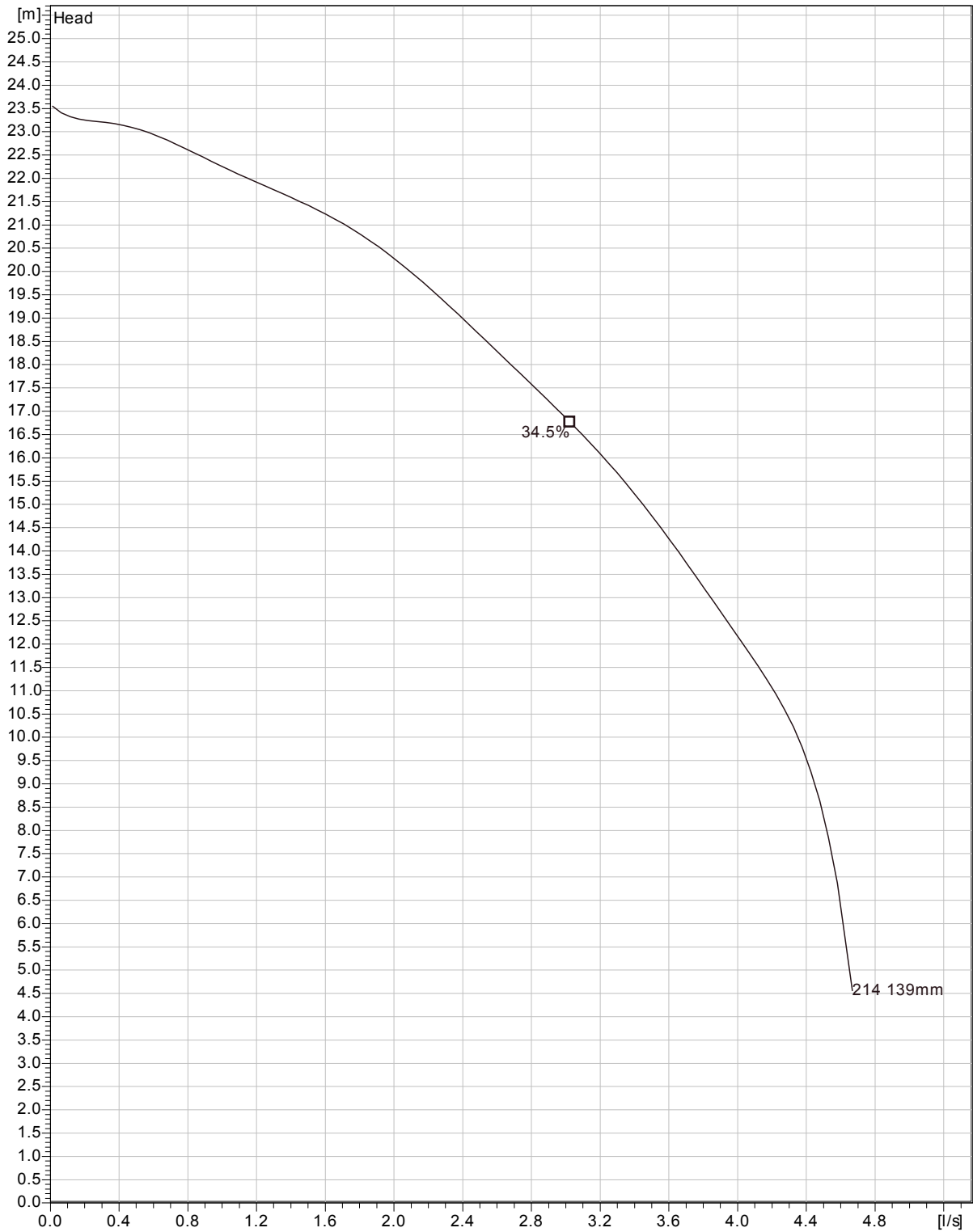
Power factor	
1/1 Load	0.86
3/4 Load	0.80
1/2 Load	0.68
Efficiency	
1/1 Load	74.5 %
3/4 Load	78.0 %
1/2 Load	78.5 %



Curve according to: ISO 9906

Project	Project ID	Created by	Created on 2012-10-25	Last update
---------	------------	------------	--------------------------	-------------

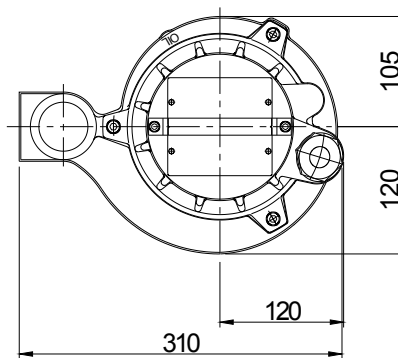
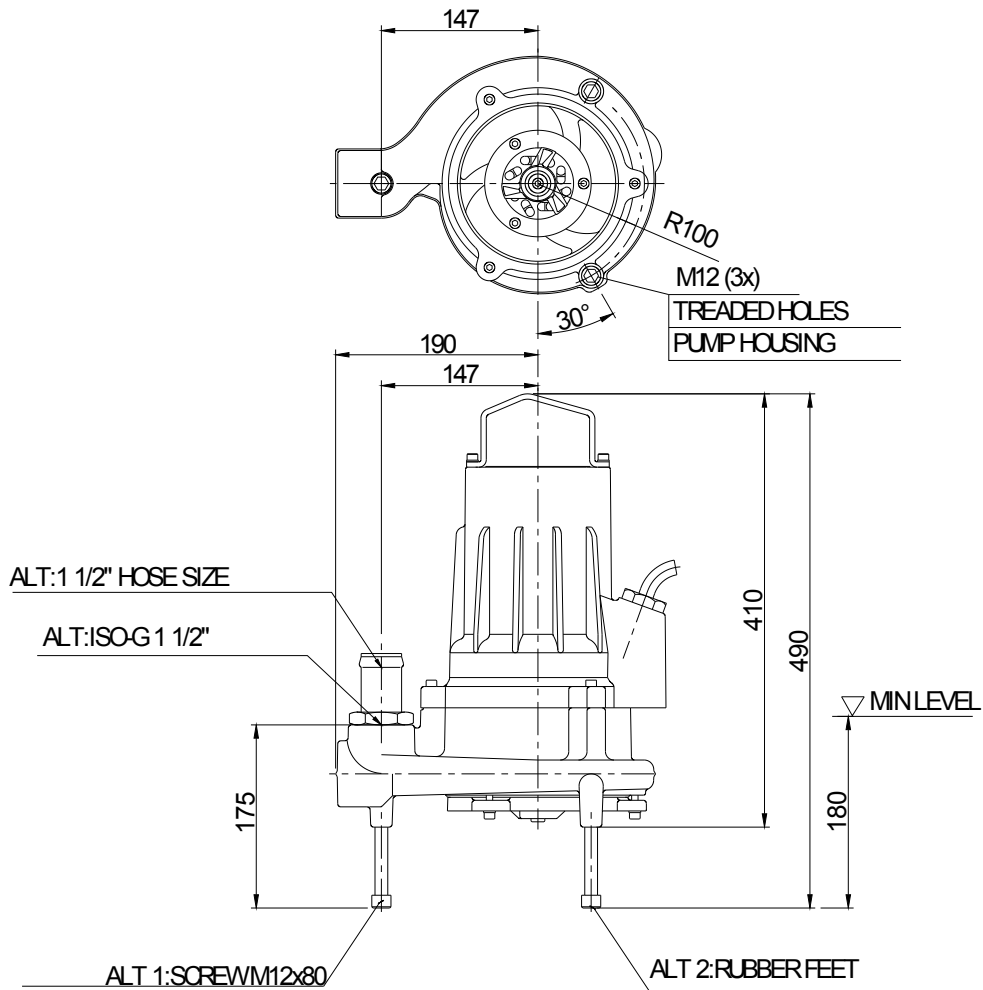
MF 3068 HT 3~ 214
Duty Analysis



Curve according to: ISO 9906

Project	Project ID	Created by	Created on	Last update
			2012-10-25	

MF 3068 HT 3~ 214
Dimensional drawing



Weight

Dimensional dvg
MF3068HT

Project	Project ID	Created by	Created on	Last update
			2012-10-25	