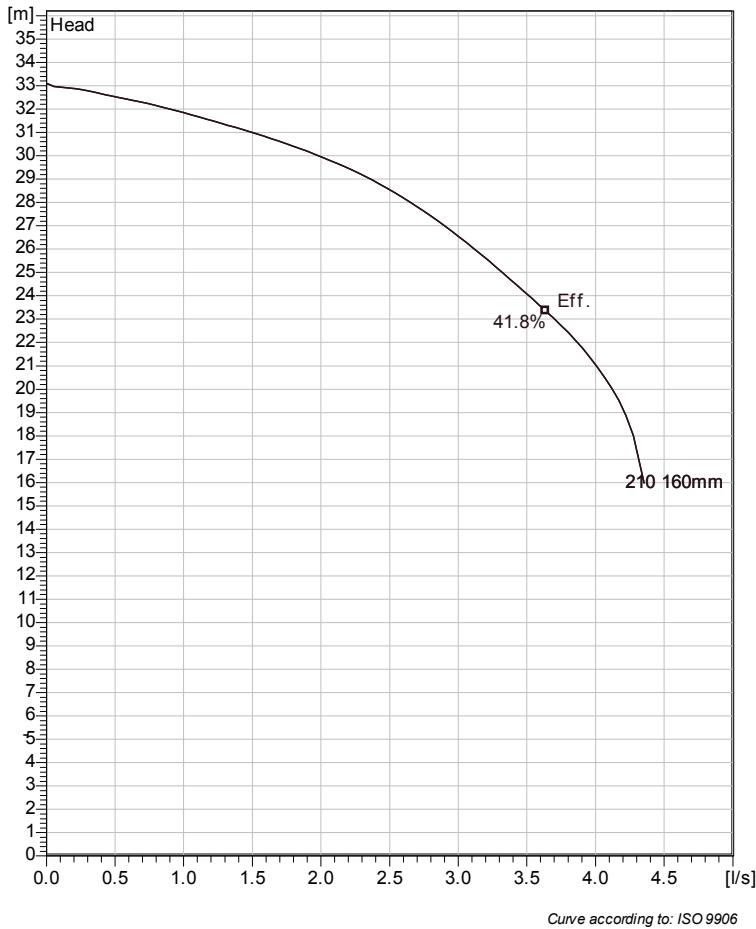


MF 3068 HT 3~ 210

Technical specification



Note: Picture might not correspond to the current configuration.

General

Semi-open multi-channel impellers with integral grinder cutter in single volute casing for liquids containing solids and fibres.

Impeller

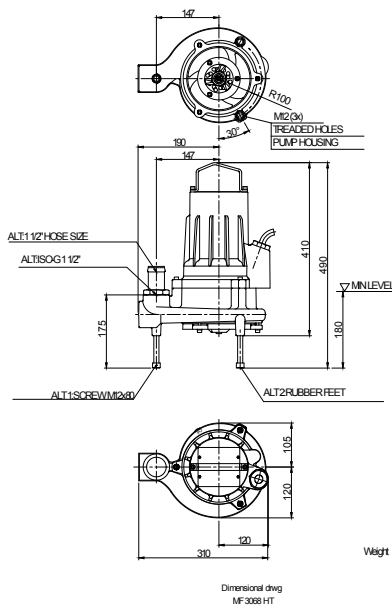
Impeller material	Grey cast iron
Outlet width	40 mm
Inlet diameter	
Impeller diameter	160 mm
Number of blades	10
Throughlet diameter	6 mm

Motor

Motor #	M3068.170 13-10-2BB-W 2,4KW
Stator variant	
Frequency	50 Hz
Rated voltage	190 V
Number of poles	2
Phases	3~
Rated power	2.4 kW
Rated current	11 A
Starting current	53 A
Rated speed	2715 rpm
Power factor	
1/1 Load	0.85
3/4 Load	0.79
1/2 Load	0.67
Efficiency	
1/1 Load	76.5 %
3/4 Load	79.5 %
1/2 Load	80.0 %

Configuration

Installation: F - Free standing Semi permanent, Wet



Project	Project ID	Created by	Created on 2012-10-25	Last update
---------	------------	------------	--------------------------	-------------

MF 3068 HT 3~ 210

Performance curve

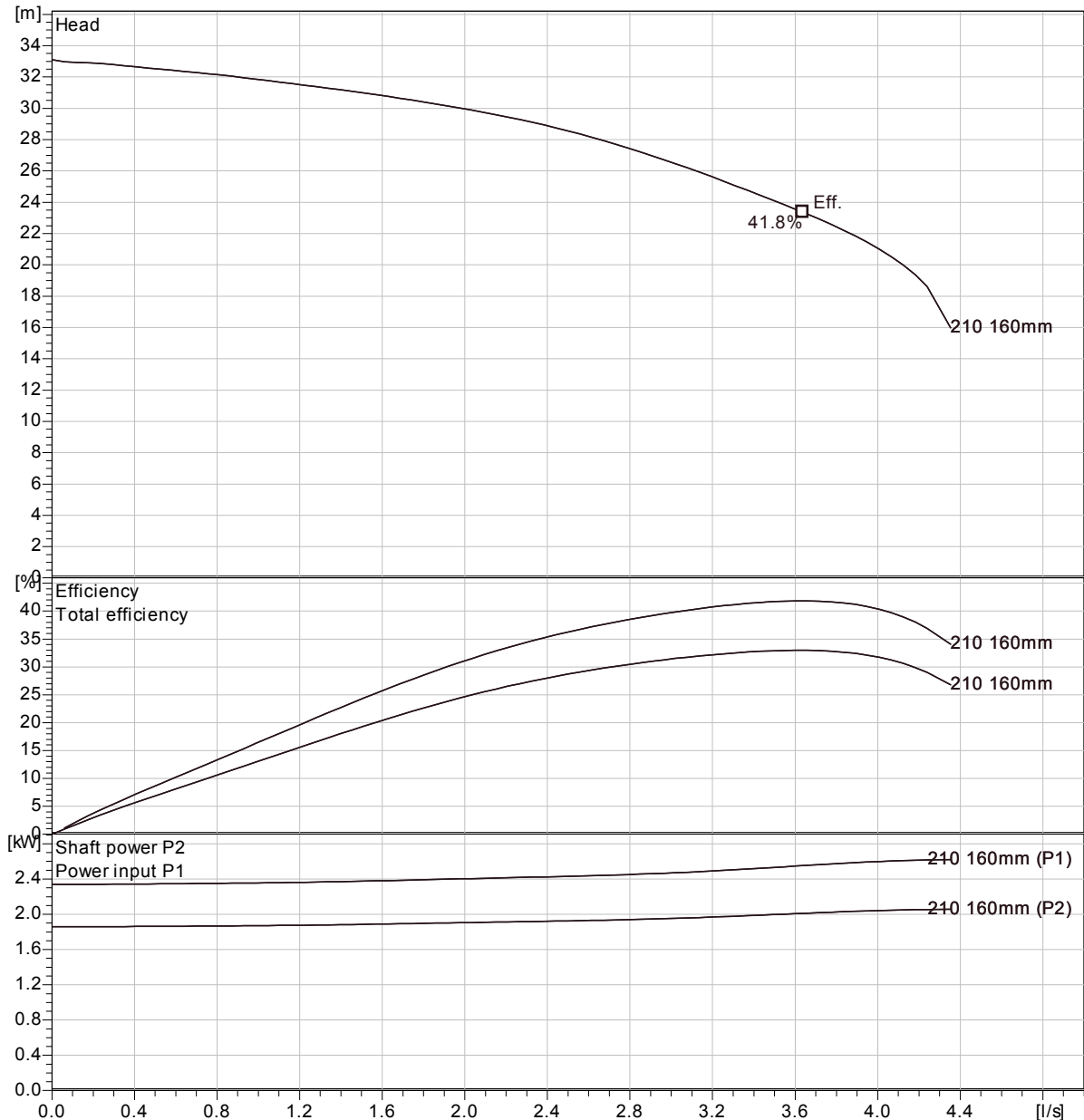
Pump

Outlet width	40 mm
Inlet diameter	160 mm
Impeller diameter	10
Number of blades	6 mm
Throughlet diameter	6 mm

Motor

Motor #	M3068.170 13-10-2BB-W 2,4KW
Stator variant	
Frequency	50 Hz
Rated voltage	190 V
Number of poles	2
Phases	3~
Rated power	2.4 kW
Rated current	11 A
Starting current	53 A
Rated speed	2715 rpm

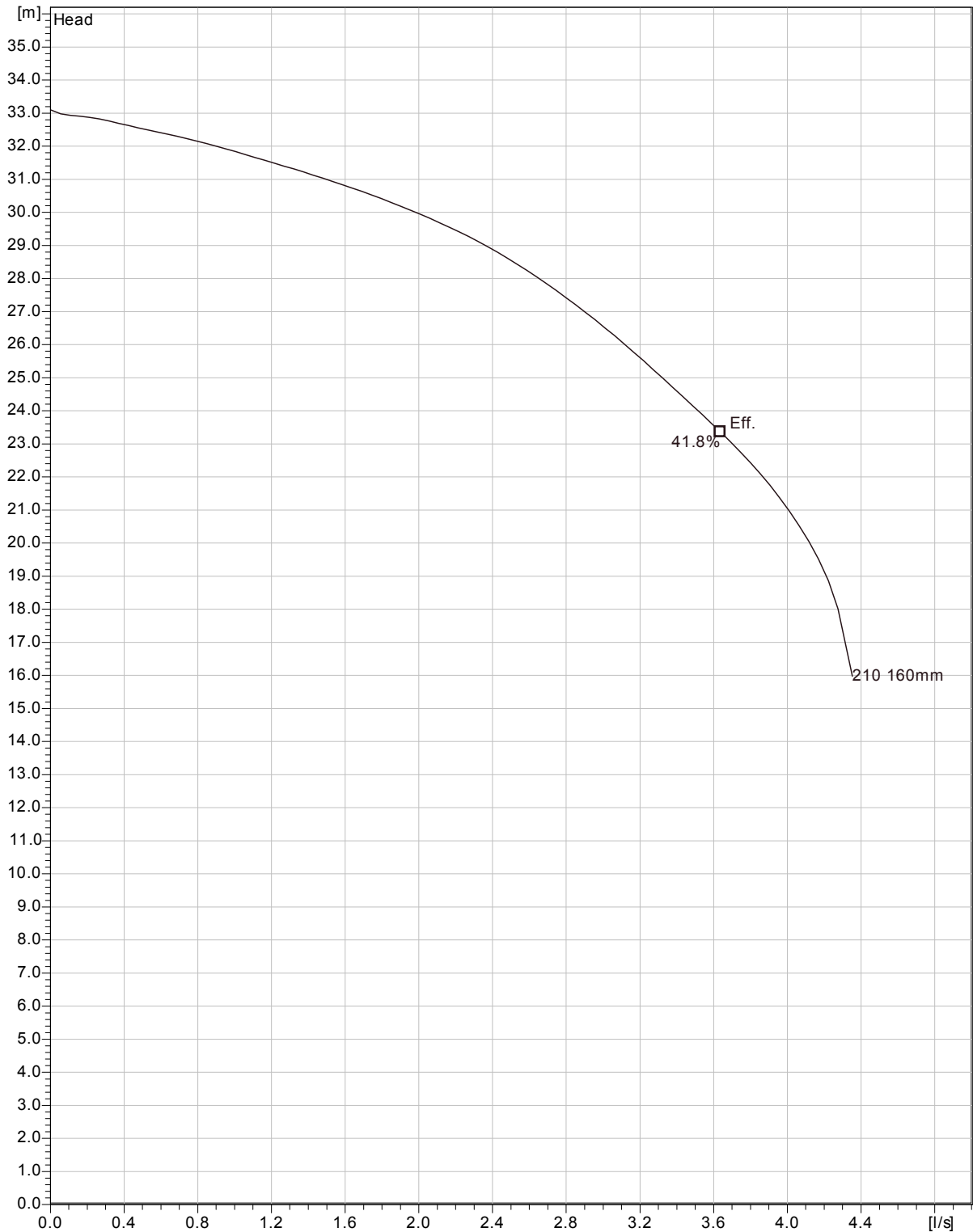
Power factor	
1/1 Load	0.85
3/4 Load	0.79
1/2 Load	0.67
Efficiency	
1/1 Load	76.5 %
3/4 Load	79.5 %
1/2 Load	80.0 %



Curve according to: ISO 9906

Project	Project ID	Created by	Created on 2012-10-25	Last update
---------	------------	------------	--------------------------	-------------

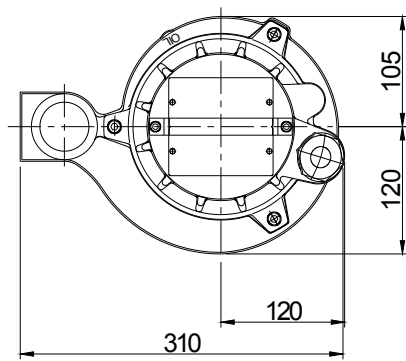
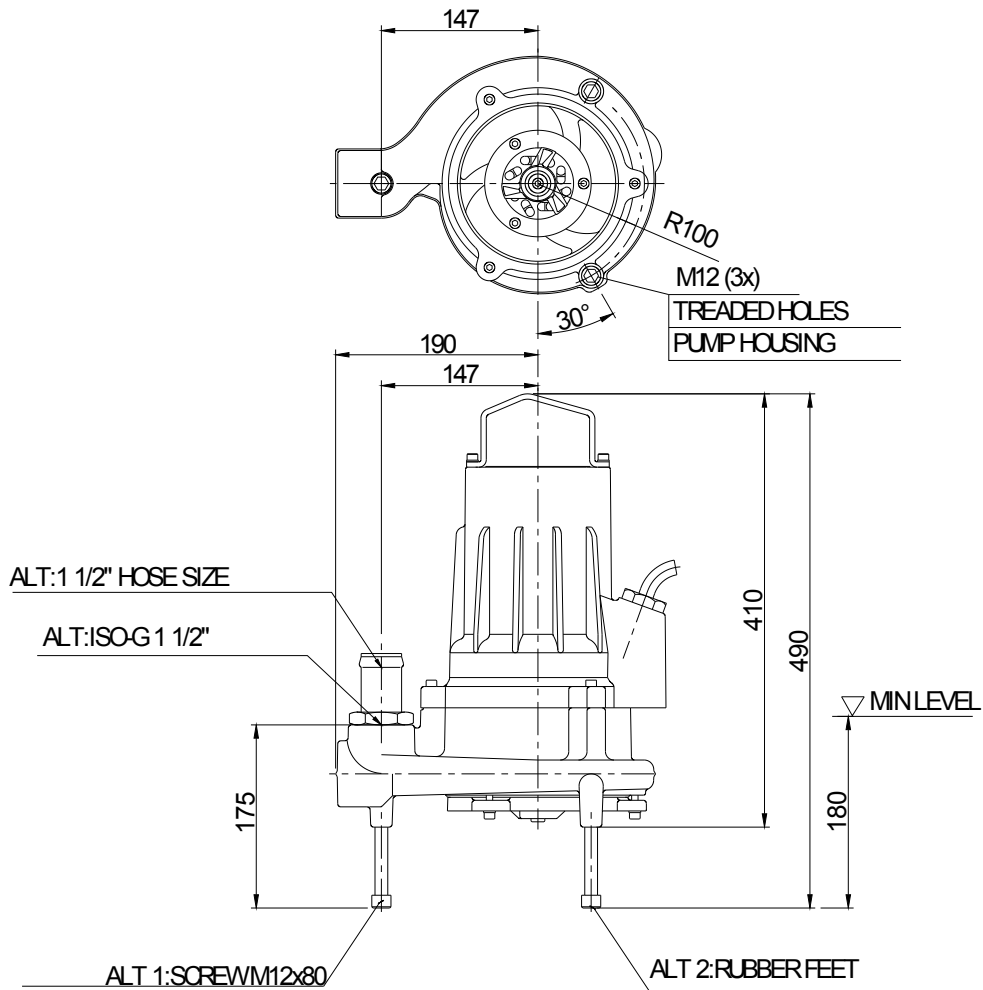
MF 3068 HT 3~ 210
Duty Analysis



Curve according to: ISO 9906

Project	Project ID	Created by	Created on	Last update
			2012-10-25	

MF 3068 HT 3~ 210
Dimensional drawing



Weight

Dimensional dvg
MF3068HT

Project	Project ID	Created by	Created on	Last update
			2012-10-25	