



# Technical specification

---

Submersible pump G 3085, 50 Hz



Flygt







# G 3085

## Product

Submersible pump for pumping raw water.

## Denomination

Product code 3085.183  
 Installation F  
 Impeller characteristic MT

## Process data

Liquid temperature max +40 °C  
 Depth of immersion max 20 m  
 The pH of the pumped liquid pH 5,5-14  
 Liquid density max. 1100 kg/m<sup>3</sup>

## Motor data

Frequency 50 Hz  
 Insulation class H (+180° C)  
 Voltage variation  
 - continuously running max ± 5%  
 - intermittent running max ± 10%  
 Voltage imbalance between phases max 2%  
 No. of starts/hour max 30

## Cable

### Direct-on-line start

SUBCAB® 4G1,5 mm<sup>2</sup>  
 4G1,5+2x1,5 mm<sup>2</sup>  
 4G2,5 mm<sup>2</sup>  
 4G2,5+2x1,5 mm<sup>2</sup>

### Y/D start

SUBCAB® 7G2,5 mm<sup>2</sup>

## Monitoring equipment

Thermal contacts opening temperature 125° C

## Material

Impeller Cast iron  
 Pump housing Cast iron  
 Stator housing Cast iron  
 Shaft Stainless steel  
 O-rings Nitrile rubber

### Mechanical face seals

Alternative	Inner seal	Outer seal
1	Carbon/ Aluminium oxide	Corrosion resistant cemented carbide/ Corrosion resistant cemented carbide
2	Carbon/ Aluminium oxide	Silicon carbide/ Silicon carbide

## Surface Treatment

All cast parts are primed with a water-borne primer. The finishing coat is a high-solid two pack paint.

## Weight

See dimensional drawing.

## Option

Warm liquid version on request  
 Leakage sensor in stator housing FLS  
 Leakage sensor in oil housing CLS  
 Other cables  
 Surface treatment Epoxy treatment

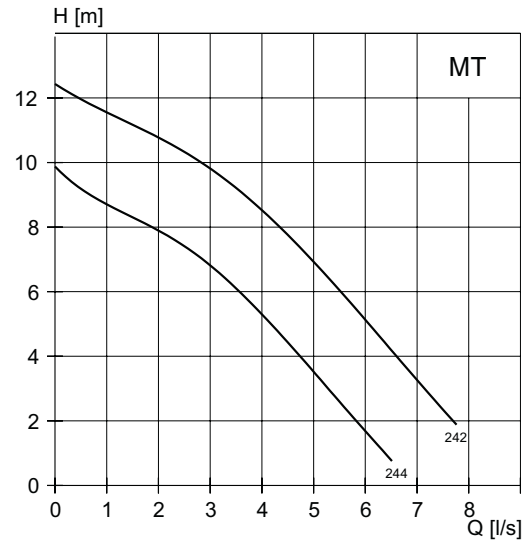
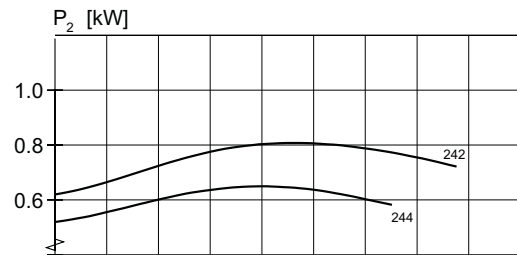
## Accessories

Electrical accessories such as pump controller, control panels, starters, monitoring relays, cables.

See separate booklet or [www.flygt.com](http://www.flygt.com), for further information

### MT-Motor rating and performance curve

Curve/Impeller No	Rated power, kW	Rated current, A	Starting current, A	Power factor cos φ	Impeller throatlet, mm	Ex proof version available	Installation				
							F				
<b>400 V, 50 Hz, 3 ~, 2830 r/min</b>											
242	0,77	1,8	9,1	0,86	19	No	•				
244	0,77	1,8	9,1	0,86	19	No	•				
<b>230 V, 50 Hz, 1 ~, 2935 r/min</b>											
242	0,85	4,8	30,0	0,98	19	No	•				
244	0,85	4,8	30,0	0,98	19	No	•				

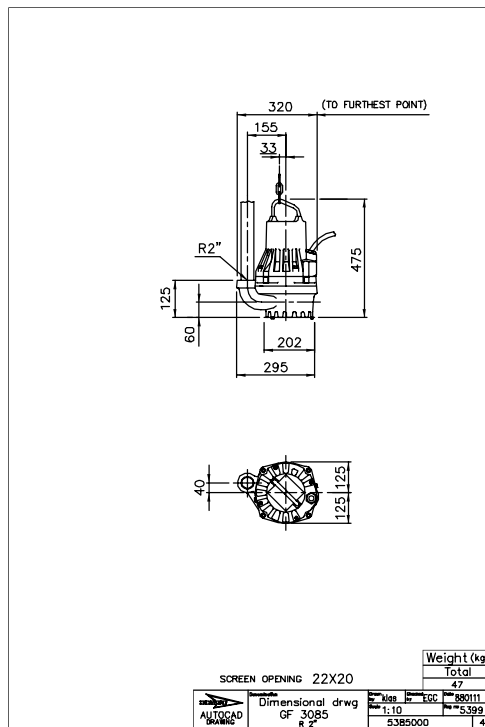


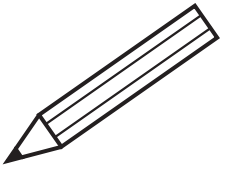
## Dimensional drawing

All drawings are available as Acrobat documents (.pdf) and AutoCad drawings (.dwg). Download the drawings from [www.flygt.com](http://www.flygt.com) or contact your ITT Flygt representative for more information.

All dimensions are in mm.

## MT, F-installation





---

A series of horizontal dashed lines for handwriting practice, starting below the pencil illustration and extending to the bottom of the page.





[www.flygt.com](http://www.flygt.com)