

Technical  
specification



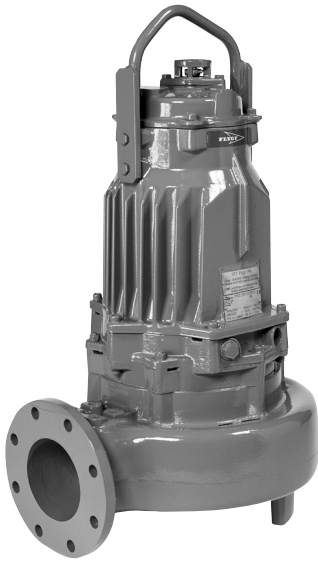
---

## Submersible pump F 3152, 50 Hz

---

**FLYGT**  
a xylem brand





# F 3152

## Product

Submersible pump for pumping liquid manure, or heavily contaminated sewage and sludge. The impeller is S-shaped and fitted with a cutting device. The pump is equipped with a friction clutch to protect the pump if any solids is blocking the impeller.

## Denomination

Product code 3152.350  
 Installation J, P, S  
 Impeller characteristics LT, HT

## Process data

Liquid temperature max +40 °C  
 Depth of immersion max 20 m  
 The pH of the pumped liquid pH 5,5-14  
 Liquid density max. 1100 kg/m<sup>3</sup>

## Motor data

Frequency 50 Hz  
 Insulation class H (+180 °C)  
 Voltage variation  
 - continuously running max ± 5%  
 - intermittent running max ± 10%  
 Voltage imbalance between phases max 2%  
 No. of starts/hour max 30

## Cable

**Direct-on-line start**  
 SUBCAB® 4G4+2x1,5 mm<sup>2</sup>  
 4G6+2x1,5 mm<sup>2</sup>  
 4G10+2x1,5 mm<sup>2</sup>

## Y/D start

SUBCAB® 7G2,5+2x1,5 mm<sup>2</sup>  
 7G4+2x1,5 mm<sup>2</sup>  
 7G6+2x1,5 mm<sup>2</sup>

## Monitoring equipment

Thermal contacts opening temperature 125 °C

## Material

Impeller Cast iron  
 Pump housing Cast iron  
 Stator housing Cast iron  
 Shaft Stainless steel  
 O-rings Nitrile rubber

## Mechanical face seals

Alternative	Inner seal	Outer seal
1	Corrosion resistant cemented carbide/ Carbon	Corrosion resistant cemented carbide/ Corrosion resistant cemented carbide
2	Corrosion resistant cemented carbide/ Corrosion resistant cemented carbide	Corrosion resistant cemented carbide/ Corrosion resistant cemented carbide

## Surface Treatment

All cast parts are primed with a water-borne primer. The finishing coat is a high-solid two pack paint.

## Weight

See dimensional drawing.

## Option

Leakage sensor in stator housing FLS  
 Leakage sensor in oil housing CLS  
 Surface treatment Epoxy treatment

## Accessories

Discharge connections, hose connections and other mechanical accessories.

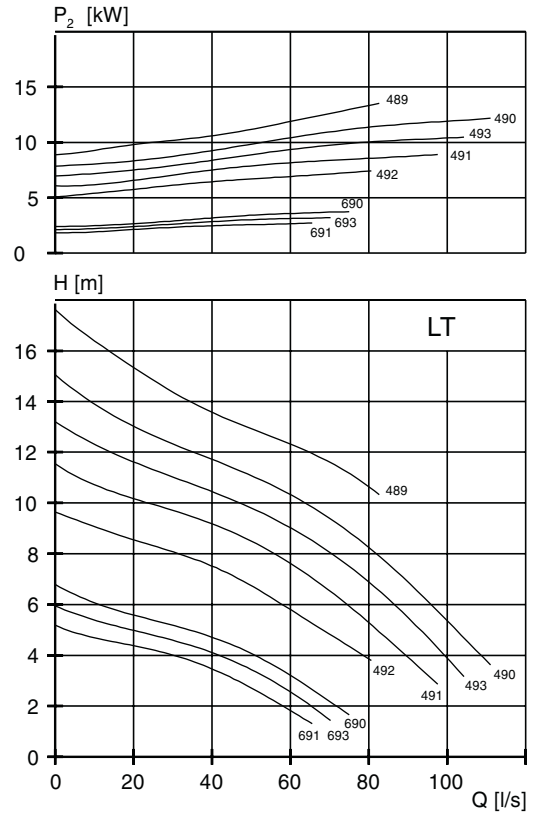
Electrical accessories such as pump controller, control panels, starters, monitoring relays, cables.

See separate booklet or [www.xyleminc.com](http://www.xyleminc.com), for further information.

### LT-Motor rating and performance curve

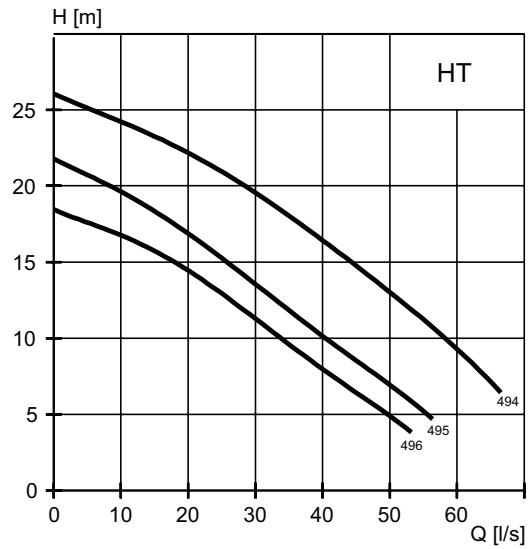
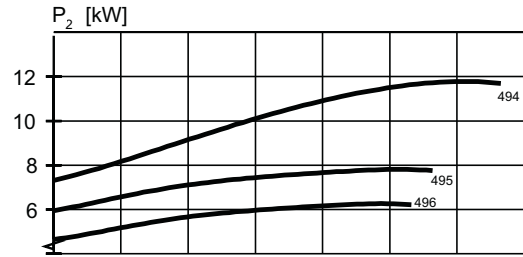
Curve/Impeller No	Rated power, kW	Rated current, A	Starting current, A	Power factor cos φ	Ex proof version available	Installation			
						J	P	S	
<b>400 V, 50 Hz, 3 ~, 1460 r/min</b>									
492	7,5	16	104	0,81		•	•	•	
<b>400 V, 50 Hz, 3 ~, 955 r/min</b>									
690	8,8	18	87	0,87		•	•	•	
691	8,8	18	87	0,87		•	•	•	
693	8,8	18	87	0,87		•	•	•	
<b>400 V, 50 Hz, 3 ~, 1455 r/min</b>									
491	9,0	19	116	0,81		•	•	•	
492	9,0	19	116	0,81		•	•	•	
<b>400 V, 50 Hz, 3 ~, 1450 r/min</b>									
489	13,5	27	162	0,83		•	•	•	
490	13,5	27	162	0,83		•	•	•	
491	13,5	27	162	0,83		•	•	•	
492	13,5	27	162	0,83		•	•	•	
493	13,5	27	162	0,83		•	•	•	

Y/D starting current is approximately 1/3 of D starting current.



### HT-Motor rating and performance curve

Curve/Impeller No	Rated power, kW	Rated current, A	Starting current, A	Power factor cos φ	Ex proof version available	Installation			
						J	P	S	
<b>400 V, 50 Hz, 3 ~, 1460 r/min</b>									
496	7,5	16	104	0,81		•	•	•	
<b>400 V, 50 Hz, 3 ~, 1455 r/min</b>									
495	9,0	19	116	0,81		•	•	•	
496	9,0	19	116	0,81		•	•	•	
<b>400 V, 50 Hz, 3 ~, 1450 r/min</b>									
494	13,5	27	162	0,83		•	•	•	
495	13,5	27	162	0,83		•	•	•	
496	13,5	27	162	0,83		•	•	•	



### Dimensional drawing

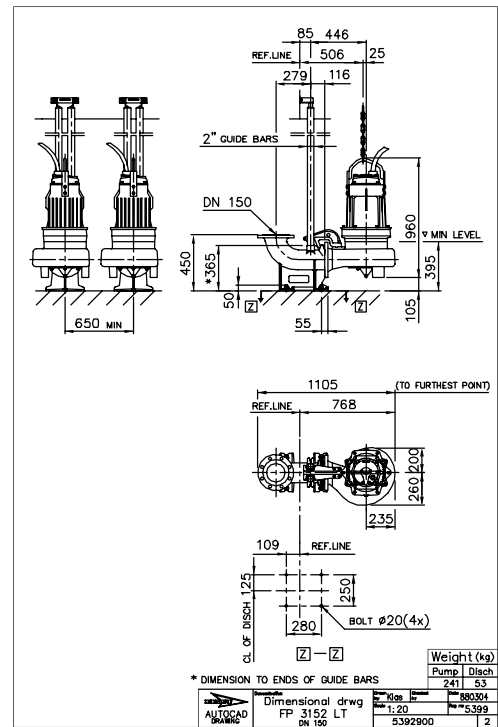
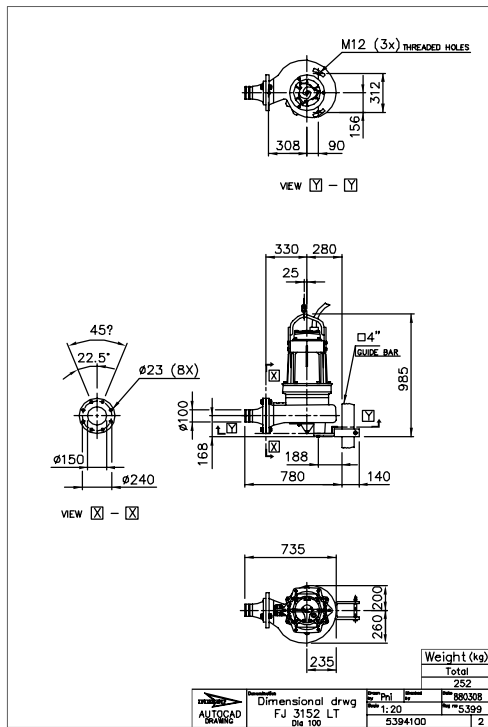
All drawings are available as Acrobat documents (.pdf) and AutoCad drawings (.dwg).

Contact your local representative for more information.

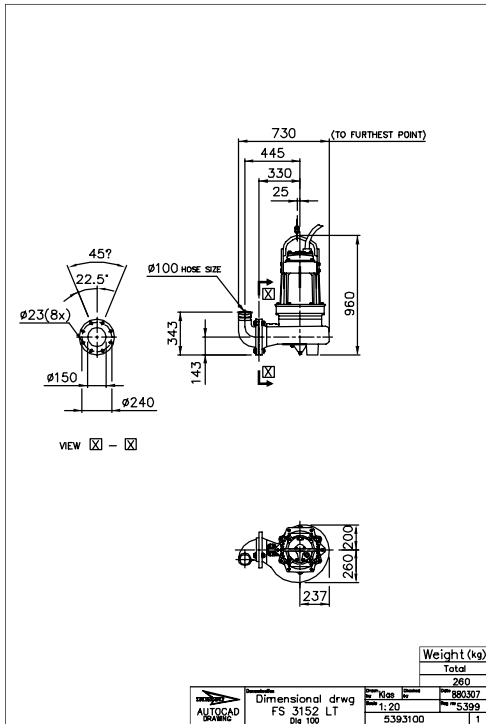
All dimensions are in mm.

#### LT, J-installation

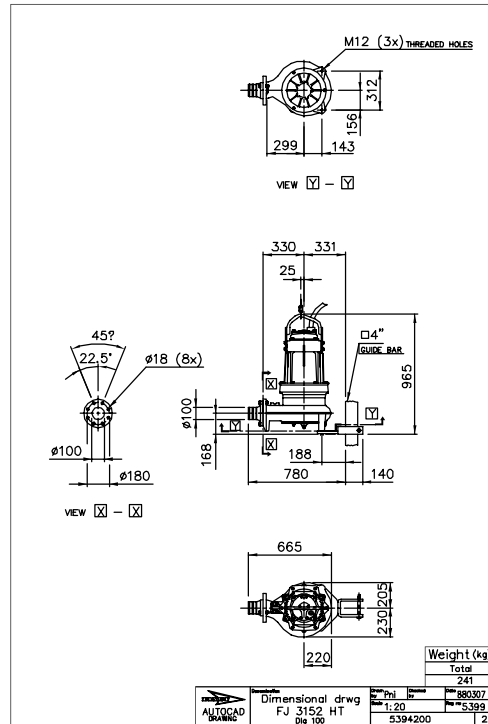
#### LT, P-installation



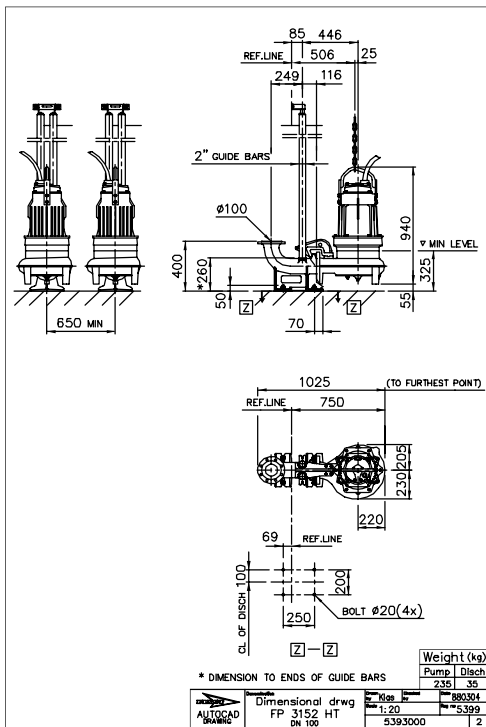
LT, S-installation



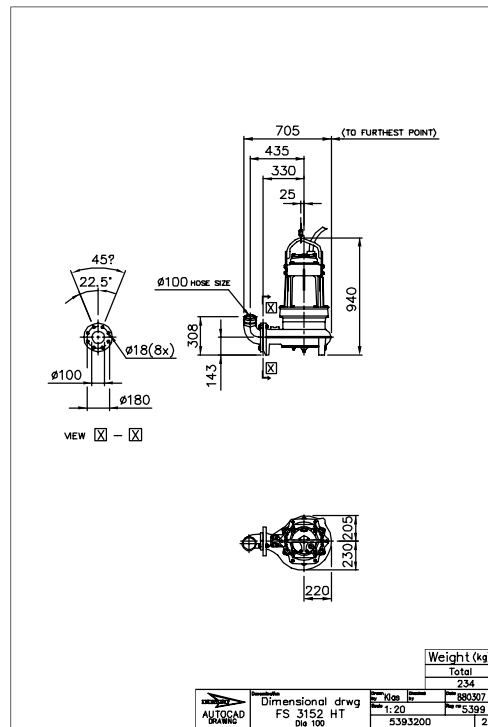
HT, J-installation



HT, P-installation



HT, S-installation



# Xylem |'zīləm|

- 1) The tissue in plants that brings water upward from the roots
- 2) A leading global water technology company

We're 12,000 people unified in a common purpose: creating innovative solutions to meet our world's water needs. Developing new technologies that will improve the way water is used, conserved, and re-used in the future is central to our work. We move, treat, analyze, and return water to the environment, and we help people use water efficiently, in their homes, buildings, factories and farms. In more than 150 countries, we have strong, long-standing relationships with customers who know us for our powerful combination of leading product brands and applications expertise, backed by a legacy of innovation.

For more information on how Xylem can help you, go to [xylem.com](http://xylem.com)



Xylem Water Solutions AB  
Gesällvägen 33  
174 87 Sundbyberg  
Sweden  
Tel. +46-8-475 60 00  
Fax +46-8-475 69 00  
<http://tpi.xylem.com>

Visit our Web site for the latest version of this document and more information

The original instruction is in English. All non-English instructions are translations of the original instruction.

© 2011 Xylem Inc