



SELF-PRIMING CENTRIFUGAL-PUMPS



H I G H Q U A L I T Y



V E R S A T I L I T Y



H E A V Y D U T Y

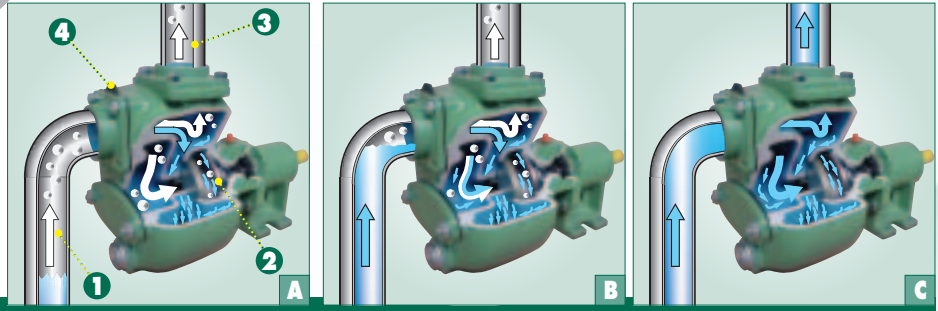
VICTOR PUMPS



motralec

4 rue Lavoisier . ZA Lavoisier . 95223 HERBLAY CEDEX
Tel. : 01.39.97.65.10 / Fax. : 01.39.97.68.48
Demande de prix / e-mail : service-commercial@motralec.com
www.motralec.com





The pump is normally placed dry above or aside the liquid. On these cases the suction line contains air.

The self-priming pump will evacuate all the air. The vacuum produced as the impeller rotates ② draws air ① into the pump where it is mixed with the liquid already contained in the pump casing. The air/liquid mixture is driven to the discharge side where the air separates out and is expelled through the discharge port ③ while the liquid, due to the higher gravity, falls back and is reused in the suction side through a small passage.

When all the air has been evacuated from the suction line the liquid is pumped, even if air-laden.

The high suction port keeps enough liquid inside the casing to allow re-priming any time. The check-valve in the suction port ④ avoids a backflow of the liquid and reduces priming time.

APPLICATIONS

A Animal meat	Flood drainage	River water	Water with mud
Bentonite	Gasoline	Soda	
Clean or dirty solvents	Light-oil	Sump water	Water with sand
Cooling milk	Lime milk	Transformator oil	Water with solids
Diesel	Liquid manure	Wash fluids	and many more...
Fertilizer	Must	Wastewater	
Fire fighting water	Petroleum products	Water with cutting sand	Z
	Rain water		

- With liquids up to 50 mm²/s (cSt), which can contain air, be abrasive, corrosive and compatible with cast iron, bronze or stainless steel. Can be located above or on side of the liquid. Some pumps sizes can self-prime up to the physical limit of 8-9 m.
- Used by transfer, load and unload, neutralizing, By-pass, spray, circulating, dewatering, irrigation, priming, well-point duty
- In industry, water treatment, refineries, ship building, environmental projects, construction, agricultural, civil guards

CONSTRUCTION



S 40 G31M+SG

Our smallest self-priming pump with single-phase motor 220-230V with on-off switch, cable on carrying frame.



Close coupled

One shaft for motor and pump: easy, compact, best price.



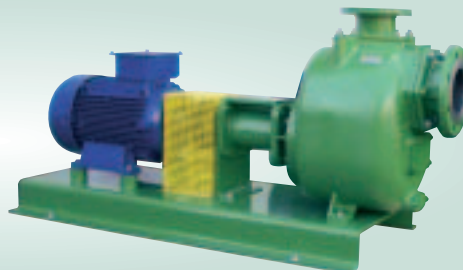
On trailer

Our self-priming pumps are available with petrol or diesel engine and on trailer or trolley.



NEW Bi-Block™

Standard B5 motor, elastic coupling and pump with own pedestal designed in one unit: user friendly, heavy-duty, reduced dimensions.



Classic

Bare shaft pump, elastic coupling with guard, B3 motor on base plate: traditional, heavy duty, flexible.



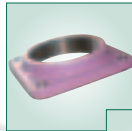
ADVANTAGES



SELF-PRIMING CENTRIFUGAL PUMPS



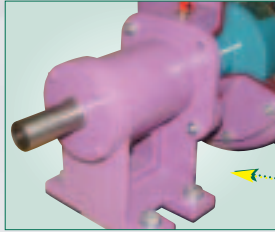
Priming cover



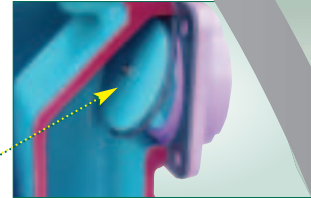
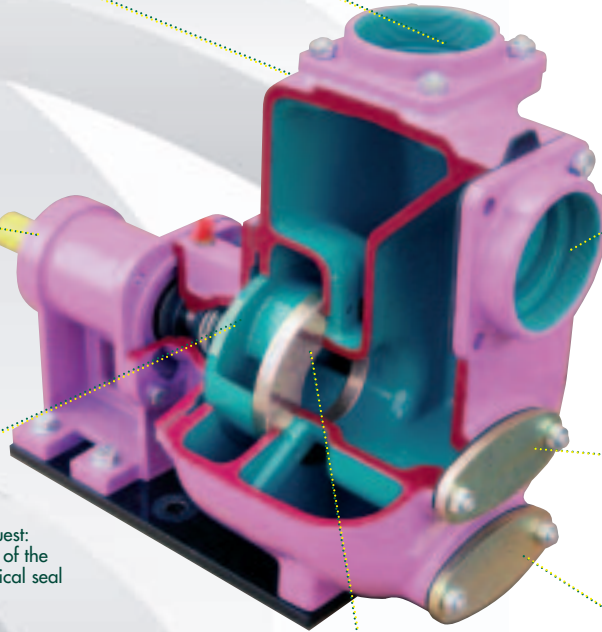
Suction and discharge ports available flanged or threaded (up to 4"). The threaded port is flanged in the casing to take faster the pipes away.



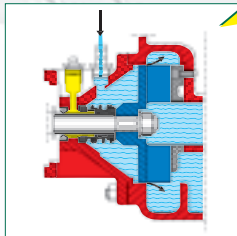
The DIN or ASA flanged ports have trough-holes for easy installation and 1/4" threaded hole for Vacuum-meter and manometer



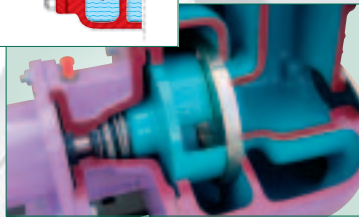
Maintenance-free ball bearings



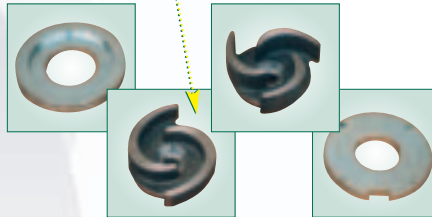
Check valve: avoids backflow of liquid from the discharge side and reduces priming times. Available in NBR, Viton®, PTFE



On request: flushing of the mechanical seal



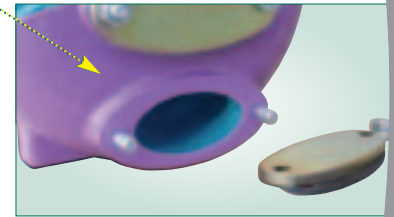
Mechanical seal in Sic/Viton with stainless steel shaft sleeve and lubrication behind the seal to improve dry running capabilities.



Heavy-duty open impeller and wear plate designed for abrasion and passage of solids. On request with cutting device for soft solids.



Inspection cover



Clean out cover

PERFORMANCES

TYPE	PORTS DN PN16 (inches)	SOLIDS Ø mm	MOTOR kW	IMPELLER Ø mm	CAPACITY (m³/h) BY TOTAL HEAD OF										
					5m	10m	15m	20m	25m	30m	35m	40m	45m	50m	55m
2900 min-1															
S 40	40 (1 1/2")	20	1,1	110	20	16	7								
S 45	40 (1 1/2")	15	2,2	172		22	18	14	10	5					
S 50	50 (2")	25	2,2	120	40	30	13								
S 60	50 (2")	17	4,0	172		42	37	30	23	14					
S 63	50 (2")	15	7,5	195					45	35	28	18			
S 68	50 (2")	25	11	220						42	37	30	24	16	
S 80	80 (3")	30	4	140	80	67	47	20							
S 83	80 (3")	20	7,5	172			80	70	57	70	20				
S 88	80 (3")	30	15	220				93	85	70	55	32			
S100	100 (4")	45	11	160		135	120	100	60						
S108	100 (4")	40	22	220					135	125	105	90	65		
1450 min-1															
S 65	50 (2")	25	2,2	220	40	28	10 ^A								
S 85	80 (3")	40	4,0	220	80	62	20 ^A								
S105	100 (4")	45	5,5	220	140	100	50 ^A								
S121	100 (4")	45	11	280		178	150	100	50 ^B						
S150	150 (6")	60	11	220	260	180	80 ^A								
S161	150 (6")	60	18,5	280		310	230	110							
S180	150 (6")	45	30	358				320	250	160					
S201	200 (8")	57	22	280	500	400	250								
S230	200 (8")	72	45	358				630	550	440	250				
960 min-1															
S170	150 (6")	50	11	358	300	240	120								
S220	200 (8")	72	18,5	358	530	420	180								
S300	300 (12")	76	55	405	1200	1000	450								

^A: max. 14 m ^B: max. 23 m



motralec

4 rue Lavoisier - ZA Lavoisier - 95223 HERBLAY CEDEX

Tel. : 01.39.97.65.10 / Fax. : 01.39.97.68.48

Demande de prix / e-mail : service-commercial@motralec.com

www.motralec.com



S 41 S-steel for sump in zinc industry

S 150 for wastewater in paper mill

S 105 Water in paint cabin

S 40 Bi-Block with ATEX for gasoline

12 IMPORTANT QUESTIONS FOR INQUIRIES

1. Type of installation
2. Pump job
3. Running hours per day
4. Type of liquid
5. Viscosity
6. Temperature
7. pH value
8. Capacity
9. Delivery pressure
10. Suction lift
11. Voltage
12. Frequency

VICTOR PUMPEN GmbH
Dieselstraße 7
D-85551 Kirchheim bei München
Tel. +49 89 9048660
Fax +49 89 9043447
e-mail: gormany@victorpumps.com

VICTOR PUMPS srl
ZIP Viale Europa 7
I-35020 Ponte San Nicolò (Padova)
Tel. +39 049 8961266
Fax +39 049 8961255
e-mail: italy@victorpumps.com



www.victorpumps.com