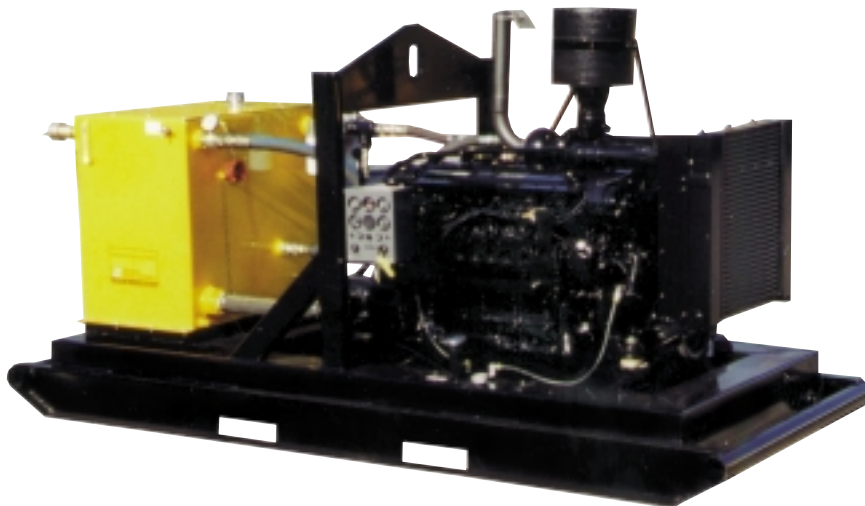


PORTABLE HYDRAULIC POWER UNIT



Our 150 horsepower hydraulic power unit features a Deutz liquid cooled diesel engine, fixed or variable displacement hydraulic pump, engine mounted hydraulic oil cooler and built-in fuel tank. It is designed to power our larger submersible pumps and other hydraulic equipment requiring flows up to 70 GPM.

Unit shown with skid frame. Trailer options available.

FEATURES

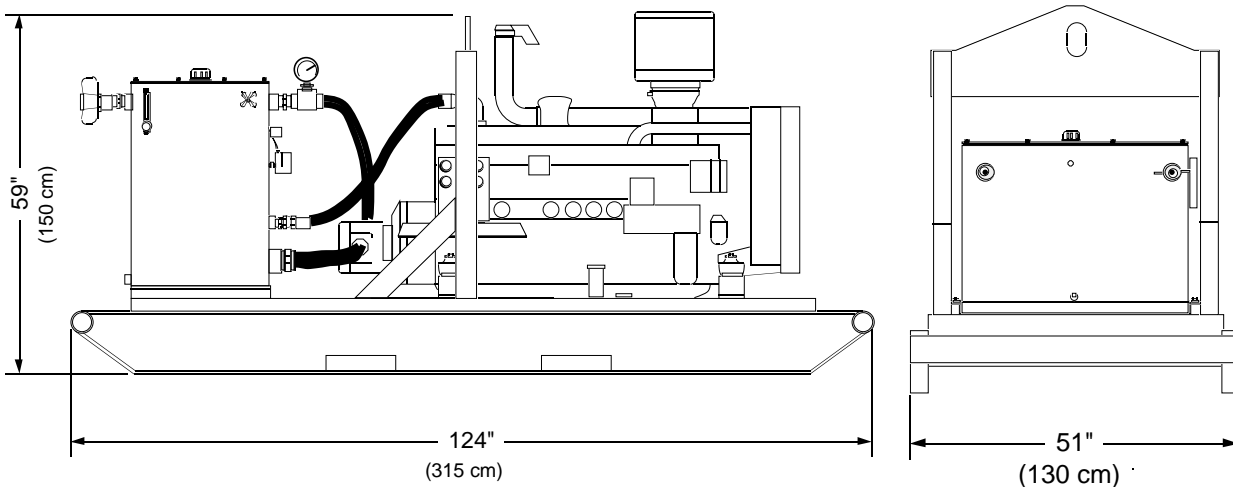
- Dependable Deutz Diesel Engine
- Skid Frame Chassis with Built-In Fuel Tank and Fork Lift Slots
- Single Point Lifting Bracket
- Automatic Engine Safety Shutdown Package
- Gear Type Hydraulic Pump (DD model)
- Pressure Comp. Piston Pump (DV model)
- Engine Mounted Hydraulic Oil Cooler
- Spin-On Return Filter W/ Indicator
- Pressure Relief Valve
- Pressure Control Valve
- Liquid Filled Pressure Gauge
- Fluid Level / Temperature Gauge

OPTIONS

- Optional Highway Trailer
- Multiple Hydraulic Circuits
- Other Flow and Pressure Combinations

B0701

Model HT150DD / DV Overall Dimensions



SPECIFICATIONS

ENGINE:..... Deutz BF6M1013 Diesel
HORSEPOWER:..... 150 @ 2300RPM
HYDRAULIC OUTPUT*:..... Variable, Max. 70 GPM (265 LPM)
OPERATING PRESSURE*:..... Maximum 2500 PSI (170 Bar)
HOSE PORT SIZE:..... 1 1/2" NPT
HYDRAULIC OIL:.....SAE 10W or 20W Type AW
also:..... Bio-degradeable Oil (Consult Factory)
OIL FILTRATION:.....10 Micron (Standard)
OIL RESERVOIR CAPACITY:..... 95 U.S. Gallons (385 Liters)
FUEL TANK CAPACITY:..... 89 U.S. Gallons (337 Liters)
FUEL CONSUMPTION:..... Approx. 6 U.S. Gal/Hr (23 Liters/Hr)
DIMENSIONS: H 59" (150 cm) x W 51" (130 cm) x L 124" (315 cm)
WEIGHT (Dry):..... 4100 lbs. (1857 kg)

* For Flows and Pressures Other Than Standard, Consult Factory

Since we are constantly working to improve our products, specifications are subject to change without notice.