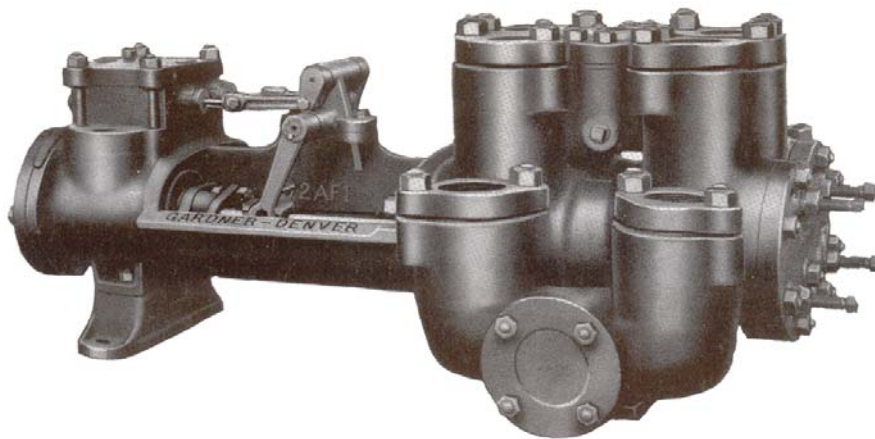




DAG (FG-AG) HIGH PRESSURE DUPLEX STEAM PUMP Air • Steam • Gas Driven



SPECIFICATIONS:

No. of Pistons: 2
Stroke Length: 6"
Pump Weight: 1,445 lbs.
(655 kg)

**Fluid Cylinder
Connections**
Suction: 4"
Discharge: 2"

VALVE POT TYPE DUPLEX STEAM PUMPS

With Plain Slide Steam Valves – One-Piece Alloy Cast Iron Fluid End

DAG (FG-AG) SIZES AND RATINGS

*SIZE		Diameter of Steam Cylinders		Diameter of Fluid Cylinders		Length of Stroke		Steam End Suitable for Max Pressure		Max Steam Pressure for Max Fluid Pressure		Fluid End Suitable for Maximum Pressure		Max Fluid Pressure with Max Steam Pressure		**DISPLACEMENT					
																45 RPM		90 RPM			
in	mm	in	mm	in	mm	lbs/ in2	kg/ cm2	lbs/ in2	kg/ cm2	lbs/ in2	kg/ cm2	lbs/ in2	kg/ cm2	Gal. per Rev.	Liters per Rev.	Gal. per Min.	Liters per Min.	Gal. per Min.	Liters per Min.		
6	152	5	127	6	152	250	17.6	250	17.6	Test Pressure 1800 psi	126.5	250	17.6	2.000	7.57	90.0	341	180	681		
		4.5	114									310	21.8	1.611	6.10	72.5	274	145	549		
		4	102									395	27.8	1.265	4.79	56.9	215	114	432		
		3.5	89									515	36.2	.958	3.63	43.1	163	86.2	326		
		3	76									700	49.2	.693	2.63	31.2	118	62.4	236		
		2.5	64									900	63.3	.469	1.78	21.1	80	42.2	160		

*Cylinder liners and pistons interchangeable in sizes listed in each group.

** Theoretical displacement with rods deducted (no slippage considered).

Stalling pressures are approximately 50% in excess of maximum fluid pressures.

Specifications subject to change without notice.



MODEL DESIGNATIONS	
MODEL	FG-AG
Mud Service Fitted	DAGA
Grout & Cement Service	DAGB
Oil Service	DAGC
General Service	DAGG
Bronze Fitted (Water Svc)	DAGE
Stroke	6"
Liner Size	
Maximum	5"
Minimum	2.5"
Fluid End Type	Cast Iron One Piece

COMPONENT	STANDARD FITTED	MUD, GROUT & CEMENT FITTED	OIL SERVICE FITTED	BOILER FEED or WATER SERVICE
Cylinder	Cast Iron	Cast Iron	Cast Iron	Cast Iron
Liners	Hardened Steel	Hardened Steel	Hardened Steel	Bronze
Suction Manifold	Integral with Cylinder	Integral with Cylinder	Integral with Cylinder	Integral with Cylinder
Discharge Manifold	Integral with Cylinder	Integral with Cylinder	Integral with Cylinder	Integral with Cylinder
Packing	Braided Polymer	Molded Convex	Braided Polymer	Braided Polymer
Piston	Iron Follower Type	Steel Insert Type	Iron Solid Type	Bronze Follower Type
Piston Rod	Hardened Steel	Hardened Steel	Hardened Steel	Bronze
Stuffing Box	Cast Iron	Cast Iron	Cast Iron	Cast Iron
Valve	Steel Wing Guided	Steel (Gravel) Wing Guided	Steel Wing Guided	Bronze Wing Guided
Valve Seats	Steel	Steel	Steel	Bronze

STEAM END	
COMPONENT	MATERIAL
Cylinder	Cast Iron
Piston	Cast Iron
Packing	Braided Polymer
CONNECTIONS	
Inlet	1"
Exhaust	1 ½"

*Materials listed are furnished as standard equipment. Alternate materials available upon request.