



## FXE (FC-FXE) Two-Piece Fluid End DUPLEX POWER PUMP

### SPECIFICATIONS:

#### Maximum BHP

Mud Service: 102 (76 kw)

Ind'l. Service: 130 (98 kw)

#### Maximum Jackshaft RPM

Mud Service: 390

Ind'l. Service: 510

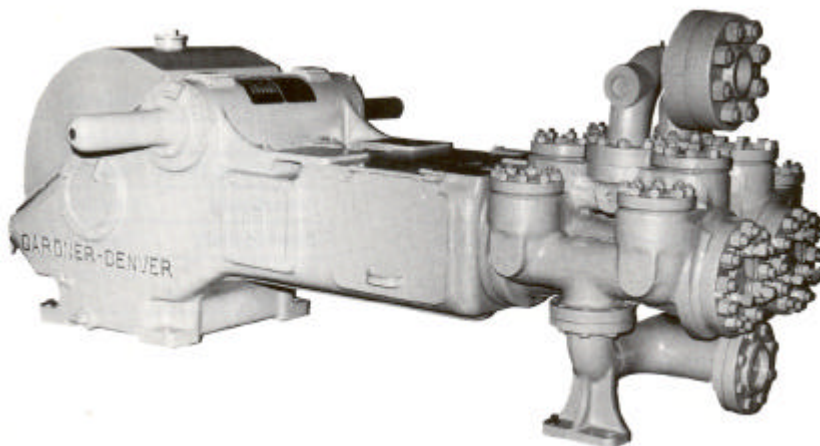
#### No. of Pistons: 2

Stroke Length: 10 in. (254 mm)

Piston Rod Load: 11340 lbs. (6,110 kg)

Oil Capacity: 14 gal. (53 liters)

Pump Weight: 6,235 lbs. (2,828 kg)



### PERFORMANCE RATINGS

FXE DUPLEX INDUSTRIAL PUMP for Oil Line, Mining and Industrial Service																
Model	Stroke	Liner Size Diameter		Normal Operation					** Maximum Recommended Operation				*** Maximum Working Pressure		Maximum Piston Load	
				Displacement		Max Pump RPM	Jack-shaft RPM	Input HP at Max. Speed	Displacement		Max Pump RPM	Jack-shaft RPM				Input HP at Max. Speed
				in.	mm	gpm	lpm				gpm	lpm				
FXE(*)	10" (254 mm)	5	127.0	185	700	57	342	87.1	276	1045	85	510	130	686	47	11340 lbs. (6110 kg)
		4 1/2	114.3	148	560				221	836				847	58	
		4	101.6	115	435				172	651				1072	74	
		3 1/2	88.9	86	326				129	488				1401	97	
		3	76.2	61	231				91	344				1906	134	

FXE DUPLEX MUD PUMP for Mud, Grout and Cement Service													
Model	Stroke	Liner Size Diameter		Normal / Maximum Recommended Operation					*** Maximum Working Pressure		Maximum Piston Load		
				Displacement		Max Pump RPM	Jack-shaft RPM	Input HP at Max. Speed					
				in.	mm	gpm	lpm						
FXE(*)	10" (254 mm)	5	127.0	211	799	65	390	102	686	48	11340 lbs. (6110 kg)		
		4 1/2	114.3	169	640				847	60			
		4	101.6	132	496				1072	75			
		3 1/2	88.9	98	371				1401	99			
		3	76.2	70	265				1906	134			

Based on 90% mechanical efficiency and 100% volumetric efficiency.

Specifications subject to change without notice.

\*\* These speeds are recommended for favorable suction conditions and consideration must be given to viscosity and character of fluids.

\*\*\* Maximum working pressure shown applies to the fluid ends. Power ends are designed for certain maximum piston rod loads, and in service the power end determines the maximum pressure on a given size piston. Tabulated maximum pressure for any given size piston for maximum piston rod load must not be exceeded even at reduced RPM.

Fluid cylinder liners and pistons are interchangeable in all sizes except for the FXF cylinders fitted with 4 1/2" parts and FXX and FXD cylinders with 5 1/2" parts.



## FXE (FC-FXE) DUPLEX POWER PUMP

### STANDARD EQUIPMENT

- Rods and pistons.
- Liners and valves.
- Double-extended jackshaft with extension for one side.
- Piston rods have Gardner Denver No. 1 or API No. 1 taper (optional).
- Wood skid.
- Non-adjustable packing standard. Kevlar or double stack packing optional.

**Suction Connection:** 4" NPT 250#

**Discharge Connection:** 3" NPT 2500#

#### Jackshaft Extension

Diameter: 3.25"

Length: 12.38"

Keyway: 12.38" L x 3/4" W x 3/4" H

**Dimensions:** Length 106.0", Width 59.4", Height 42.5"

**Note:** All installations must contain a pressure relief valve in the discharge line near the pump to help prevent breakage.

### OPTIONAL EQUIPMENT

- Surge chamber.
- Steel skid.
- Stainless steel valves.
- Metal packed pistons.
- Special jackshafts.
- Top motor mount.

*MODEL DESIGNATIONS	
MODEL	FC-FXE
Mud Service	FXED
Grout & Cement Service	FXEH
Oil Service	FXEM
General Service	FXEU
Bronze Fitted (Water Service)	FXEQ
Stroke	10"
Liner Size	
Maximum	5"
Minimum	2.5"
Fluid End Type	Cast Steel Two Piece

### MATERIAL SPECIFICATIONS

COMPONENT	GENERAL SERVICE	MUD, GROUT and CEMENT	OIL SERVICE	WATER SERVICE	POWER END:	
					COMPONENT	MATERIAL
Cylinder	Cast Steel	Cast Steel	Cast Steel	Cast Steel	Eccentric	Nodular Iron
Liners	Hardened Steel	Hardened Steel	Hardened Steel	Bronze	Eccentric Gear	Hardened Steel
Suction Manifold	Cast Iron	Cast Iron	Cast Iron	Cast Iron	Connecting Rods	Nodular Iron
Discharge Manifold	Nodular Iron	Nodular Iron	Nodular Iron	Nodular Iron	Crossheads	Cast Iron
Packing	Braided Polymer	Molded Convex	Braided Polymer	Braided Polymer	Main Bearing	Tapered Roller
Piston	Iron with Pacing Rings	Steel Body with Nitrile Rubber	Iron with Pacing Rings	Bronze with Pacing Rings	Connecting Rod Bearing	Bronze
Piston Rod	Hardened Steel	Hardened Steel	Hardened Steel	Bronze	Crosshead Pin Bearing	Bronze
Stuffing Box	Nodular Iron	Nodular Iron	Nodular Iron	Nodular Iron		
Valve	Iron Wing Guided	Steel Wing Guided	Steel Wing Guided	Bronze Wing Guided		
Valve Seats	Steel	Steel	Steel	Bronze		

\*Materials listed are furnished as standard equipment. Alternate materials available upon request.