



GD-135Q (QBX) QUINTUPLEX CONTINUOUS DUTY PLUNGER PUMP

SPECIFICATIONS:

Maximum BHP: 135 (101 kw)

Maximum RPM: 500

No. of Plungers: 5

Stroke Length: 3.5 in. (89 mm)

Plunger Load: 5,500 lbs. (2,495 kg)

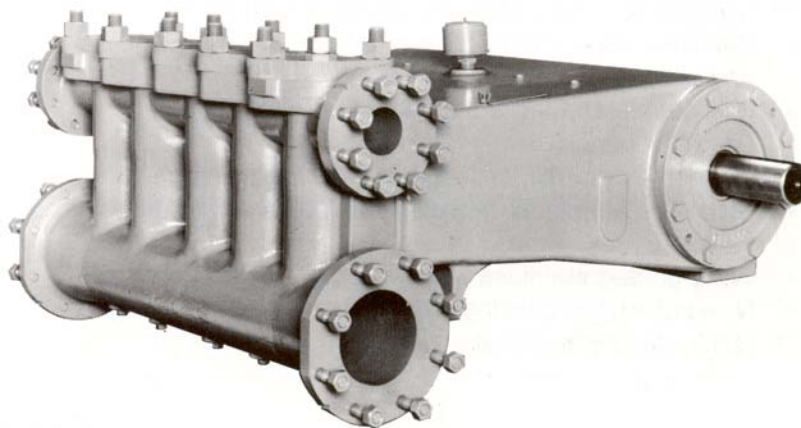
Discharge Hydrostatic Test Pressure

LP – 2,960 psi (208 kg/cm²)

MP – 6,250 psi (439 kg/cm²)

Oil Capacity: 10 gal. (58 liters)

Pump Weight: 1,875 lbs. (851 kg)



PERFORMANCE RATINGS

| Plunger Size | | Maximum Pressure | | Displacement per revolution | | Gallons Per Minute at the following RPM: | | | | | | | | | | | |
|---|----|------------------|--------------------|-----------------------------|--------|--|-----|-----|-----|-----|-----|-----|-----|-----|-----|-----|------|
| | | | | | | 175 | | 200 | | 300 | | 400 | | 450 | | 500 | |
| in. | mm | PSI | kg/cm ² | gal. | liters | GPM | LPM | GPM | LPM | GPM | LPM | GPM | LPM | GPM | LPM | GPM | LPM |
| Low Pressure Aluminum Bronze (QBXA) Fluid End | | | | | | | | | | | | | | | | | |
| 3 | 76 | 780 | 55 | 0.536 | 2.027 | 94 | 355 | 107 | 405 | 161 | 608 | 214 | 811 | 241 | 912 | 268 | 1014 |
| 2 3/4 | 70 | 925 | 65 | 0.450 | 1.703 | 79 | 298 | 90 | 341 | 135 | 511 | 180 | 681 | 203 | 767 | 225 | 852 |
| 2 1/2 | 64 | 1120 | 79 | 0.372 | 1.408 | 65 | 246 | 74 | 282 | 112 | 422 | 149 | 563 | 167 | 634 | 186 | 704 |
| 2 1/4 | 57 | 1385 | 97 | 0.301 | 1.140 | 53 | 200 | 60 | 228 | 90 | 342 | 120 | 456 | 136 | 513 | 151 | 570 |
| 2 | 51 | 1480 | 104 | 0.238 | 0.901 | 42 | 158 | 48 | 180 | 71 | 270 | 95 | 360 | 107 | 405 | 119 | 450 |
| Medium Pressure Aluminum Bronze (QBXB) Fluid End | | | | | | | | | | | | | | | | | |
| 2 1/4 | 57 | 1385 | 97 | 0.301 | 1.140 | 53 | 200 | 60 | 228 | 90 | 342 | 120 | 456 | 136 | 513 | 151 | 570 |
| 2 | 51 | 1750 | 123 | 0.238 | 0.901 | 42 | 158 | 48 | 180 | 71 | 270 | 95 | 360 | 107 | 405 | 119 | 450 |
| 1 3/4 | 45 | 2285 | 161 | 0.182 | 0.690 | 32 | 121 | 36 | 138 | 55 | 207 | 73 | 276 | 82 | 310 | 91 | 345 |
| 1 1/2 | 38 | 3110 | 219 | 0.134 | 0.507 | 23 | 89 | 27 | 101 | 40 | 152 | 54 | 203 | 60 | 228 | 67 | 253 |

Based on 90% mechanical efficiency and 100% volumetric efficiency.
For applications within shaded area contact Customer Service

Specifications subject to change without notice.



GD-135Q (QBX) QUINTUPLEX CONTINUOUS DUTY PLUNGER PUMP

STANDARD EQUIPMENT

- Oil level gauge.
- Crankshaft type construction.
- Double-extended crankshaft 3" (7.62 mm) dia., 5.5" (13.97 mm) long.
- Keyway (L x W x H) 5" x .75" x .43" (12.7 x 1.9 x 1.09 mm).
- Turbo lubrication.
- Flanged suction and discharge on either side.
- Stainless steel clamp connections between plungers and push rods.
- Removable stuffing boxes with threaded glands.
- Cradle cover.
- Colmonoy, ceramic, or tungsten carbide plungers.
- Disc style aluminum bronze, stainless steel, or monel valves.
- Wing-guided stainless steel valves.
- Non-adjustable packing standard. Kevlar or double stack packing optional.

ACCESSORIES

- Mechanical lubricator for stuffing box packing.
- Suction stabilizers.
- Discharge pulsation dampeners.
- Discharge pressure relief valve.
- Fabricated steel skid under pump and drive.
- V-belt drive assembly.
- Totally enclosed metal belt guard (OSHA approved).
- Valve seat puller.
- Valve seat driver.
- Valve cage wrench.
- Companion flanges.

| | Suction Manifold | Discharge Manifold |
|------|------------------|--------------------|
| QBXA | 6" 150# ANSI | 3" 600# ANSI |
| QBXB | 4" 150# ANSI | 2" 1500# ANSI |

NOTE: All installations must contain a pressure relief valve in the discharge line near the pump to help prevent breakage.

Dimensions: Length 43.85", Width 52.36", Height 23.52"

MATERIAL SPECIFICATIONS

| SERVICE | TYPE | CYLINDER | PACKING | STUFFING BOX | COMPONENT | MATERIAL |
|-------------------|----------------------------------|----------------------------------|----------------------------|----------------------------------|----------------------|-------------------|
| QBXA | Low Pressure | ASTM B-148-9D | Buna-N Non-Adjustable Type | ASTM B-148-9D | Crankshaft | Cast Nodular Iron |
| | | Aluminum Bronze | | Aluminum Bronze | Connecting Rods | Cast Nodular Iron |
| QBXB | Medium Pressure | ASTM B-148-9D Aluminum Bronze | Buna-N Non-Adjustable Type | ASTM B-148-9D Aluminum Bronze | Crossheads | Cast Nodular Iron |
| | | | | | Frame | Cast Iron |
| | | | | | Bearing-Main (outer) | Tapered Roller |
| | | | | | Bearing-Main (ctr.) | Straight Roller |
| Rod Bearings | Steel Lined with Tin & Babbit | | | | | |
| Bushing-Crosshead | Bronze | | | | | |

*Materials listed are furnished as standard equipment. Alternate materials available upon request.



For additional information contact your local representative or Gardner Denver Pump Division,

Customer Service Department

Specifications subject to change without notice.
Copyright 2002 Gardner Denver Inc.

6/02

www.motralec.com
service-commercial@motralec.com