



STANDARD PRODUCT CATALOG



THOMAS
A Gardner Denver Product

motralec

4 rue Lavoisier . ZA Lavoisier . 95223 HERBLAY CEDEX
Tel. : 01.39.97.65.10 / Fax. : 01.39.97.68.48
Demande de prix / e-mail : service-commercial@motralec.com
www.motralec.com

Pumps and Compressor Solutions for OEMs Worldwide

As the longtime leader in pressure and vacuum products for the OEM market, Thomas draws on nearly 50 years of technological strength. The knowledge gained working with literally thousands of customers and applications, coupled with our unmatched investments in research and development, combine to make Thomas a unique resource for OEMs the world over.

Standard Products

Within this catalog you will find detailed specifications for hundreds of standard Thomas products. It is a scope unmatched by any other company in the pressure and vacuum business. Given this, it may seem surprising that a majority of the pumps and compressors sold by Thomas are not standard at all. Instead, they are typically customized to meet application requirements for envelope size, mountings, electrical connections, service life, output characteristics, and more.

Think of Thomas standard products, then, not only as the top-quality, pre-engineered solutions they are – but also as proven platforms from which an ideal pressure or vacuum solution can be quickly and efficiently designed, prototyped and manufactured to meet your exact needs.



Pressure – The pressure spectrum ranges from .03 in.HG (1 mbar) up to 435 psi (30 bar). Six operating principles are utilized in covering a multitude of OEM applications.

Vacuum – The vacuum spectrum ranges from 29.6 in.HG (990 mbar). Six operating principles are utilized in covering a multitude of OEM applications.

Simultaneous Pressure And Vacuum – Many applications require compressed air and vacuum simultaneously.

Liquid – Applied operating principles: diaphragm (motor or linear drive), peristaltic (direct or gear drive), rotary vane.

Free flow: 2.5 lpm (max)

Suction height: 4.0 m H₂O (max)

Pressure height: 5.0 m H₂O (max)

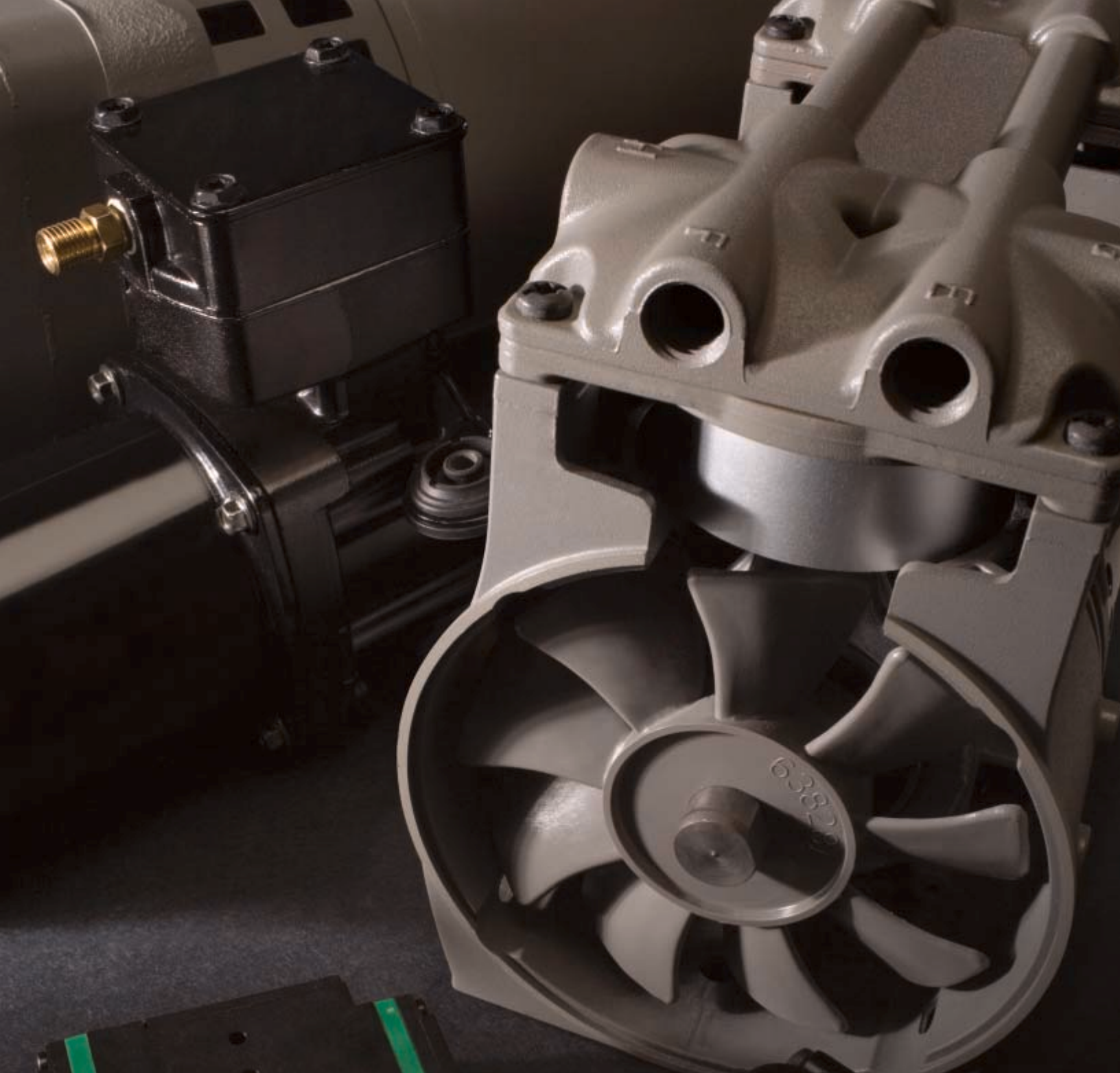


Table Of Contents

Technology Selection Guide	4
WOB-L® Pumps & Compressors	8
Articulated Piston Compressors	12
Linear Pumps & Compressors	16
Diaphragm Pumps & Compressors	18
Rotary Pumps & Compressors	22
Tank Mounted Pumps & Compressors	24
Liquid Pumps	26



Technology Selection Guide

OPERATING PRINCIPLES



Dry running WOB-L® piston pump. Best performance characteristics for high pressures. Mainly used as a compressor.

Volume flow: 6.35 cfm (180 lpm) max.
Pressure: 160 psi (11 bar) max.



Dry running diaphragm pump. Characterized by a high efficiency, low noise level and good tightness. Adapts well to different gases. Used equally as a compressor and vacuum pump.

Volume flow: 3.12 cfm (90 lpm) max.
Pressure: 41 psi (2.8 bar) max.
End vacuum: <.03 in.HG (1 mbar)



Dry running piston pump. Well suited for applications requiring high pressures. Mainly used as a compressor.

Volume flow: 9.8 cfm (227 lpm) max.
Pressure: 175 psi (12 bar) max.



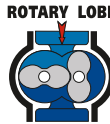
Applied operating principles: diaphragm (motor or linear drive), peristaltic (direct or gear drive), rotary vane.

Free flow: 2.5 lpm max.
Suction height: 4.0m H₂O max.
Pressure height: 5.0m H₂O max.



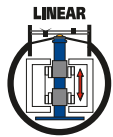
Dry running and self-lubricating rotary vane pump. Low vibration, nearly pulsation free, compact and in some cases reversible. Mainly used as a vacuum pump.

Volume flow: 21.00 cfm (595 lpm) max.
Pressure: 23 psi (1.6 bar) max.
Typical end vacuum: 4.44 in.HG (150 mbar)



Dry running and self-lubricating rotary lobe pump. Well suited for applications requiring high volumes of air flow at low pressure.

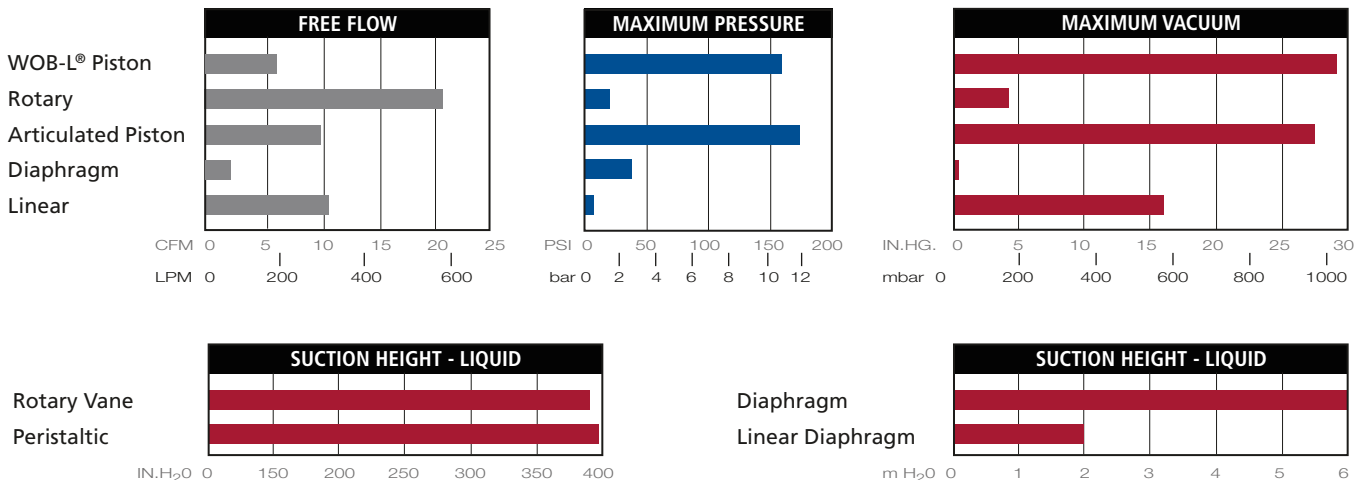
Volume flow: 2.0 cfm (56 lpm) max.
Pressure: 2.0 psi (.14 bar) max.
Vacuum: 4.0 in.HG (135 mbar) max.



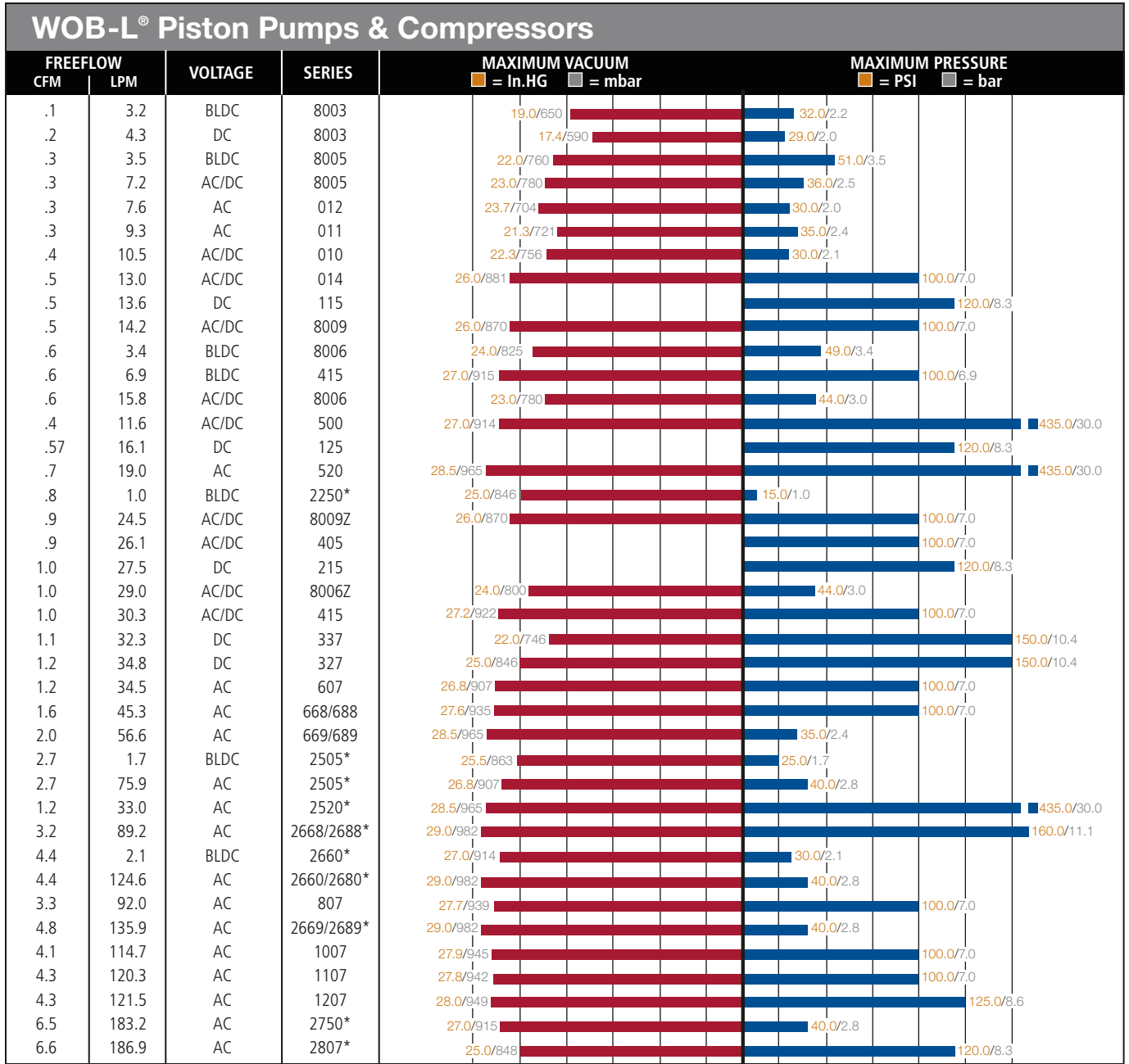
Dry running diaphragm pump. Two different means of actuation: linear and vibrating armature. Very high life time, low noise level, and high efficiency. Used as a vacuum and pressure pump.

Volume flow: 10.59 cfm (300 lpm) max.
Pressure: 10 psi (0.7 bar) max.
Vacuum: -16.28 in.HG (-550 mbar)

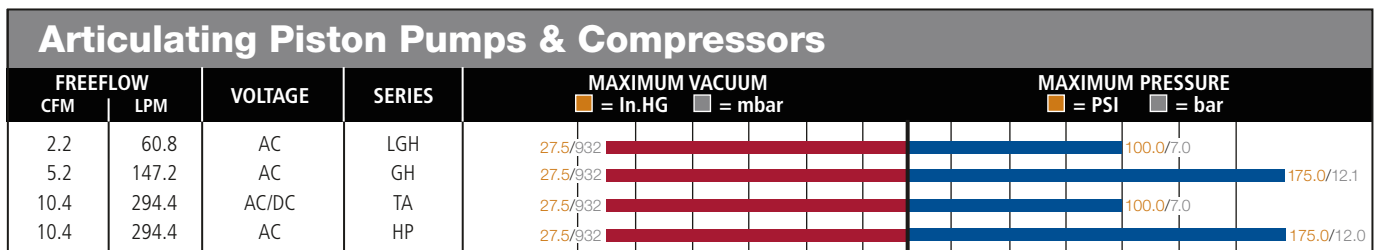
RECOMMENDED PERFORMANCE RANGES



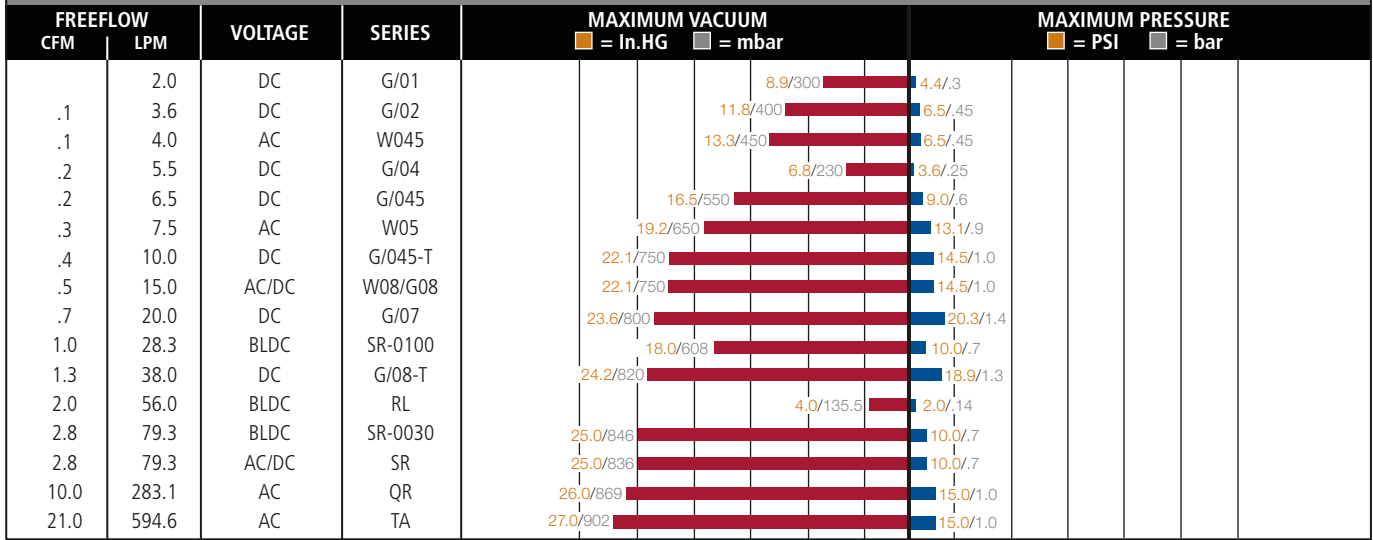
Model Selection Guide



* = Twin head design Z=Twin



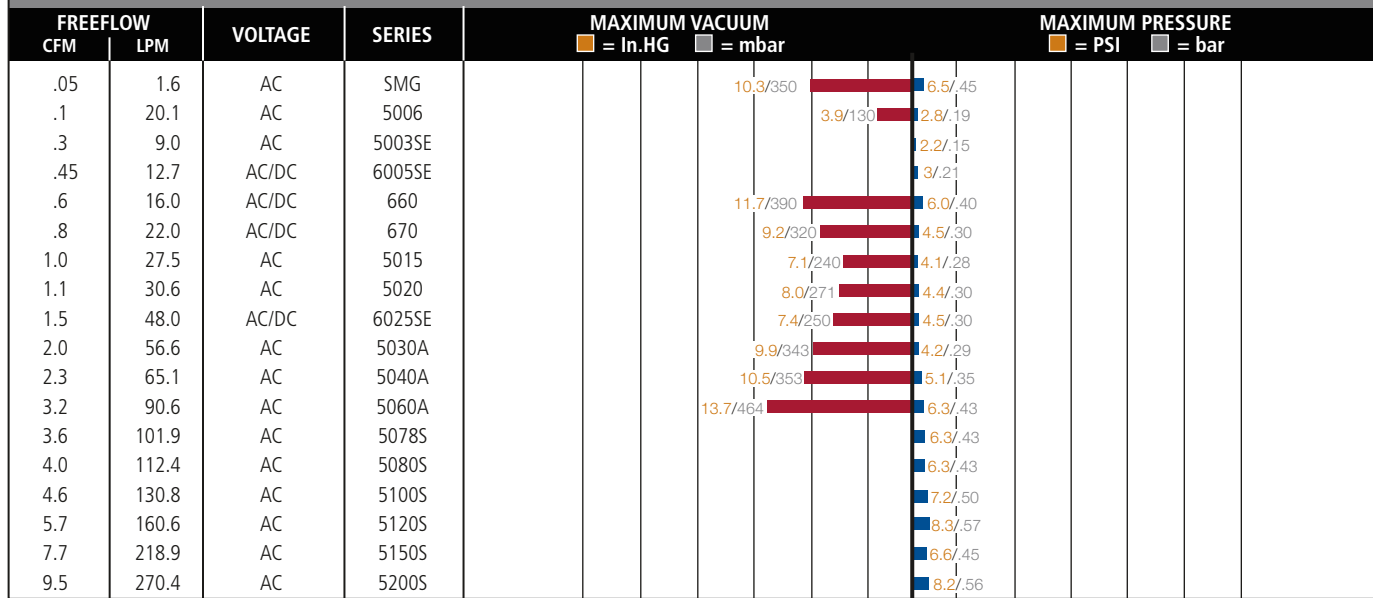
Rotary Pumps & Compressors



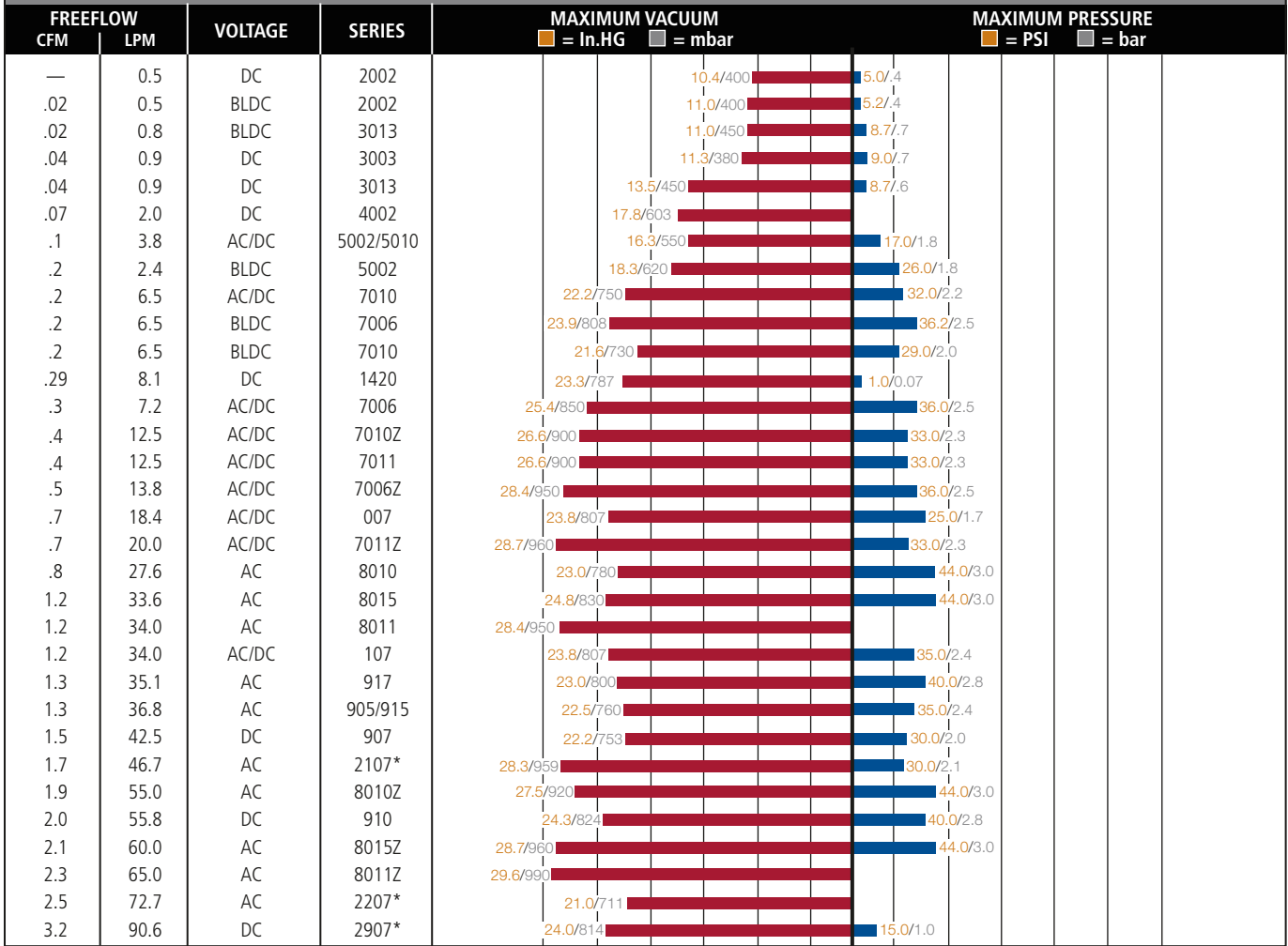
T = Twin



Linear Pumps & Compressors



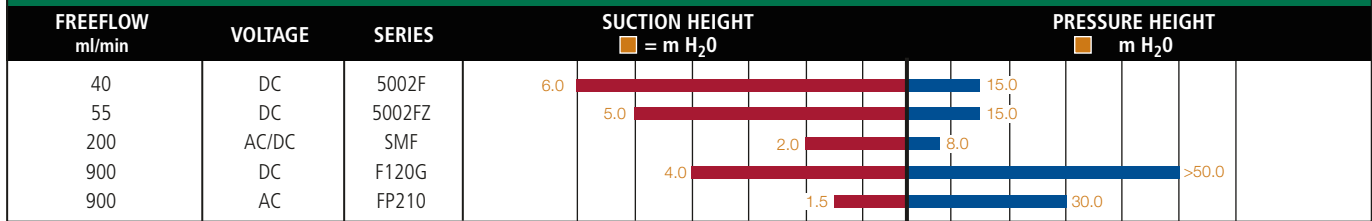
Diaphragm Pumps & Compressors



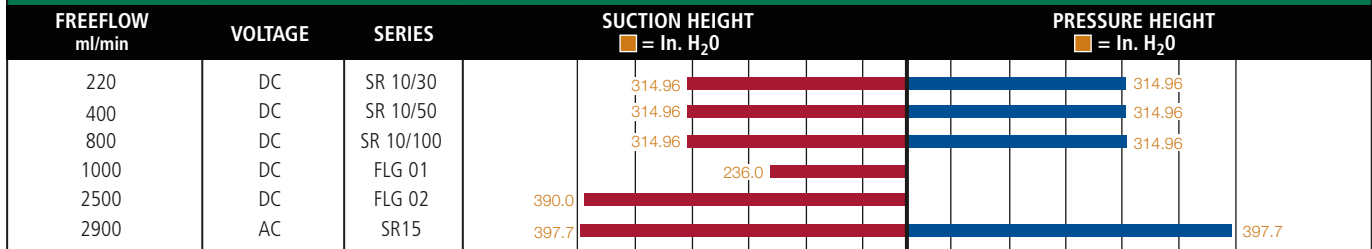
* = Twin head design Z=Twin



Liquid Diaphragm



Liquid Peristaltic & Rotary Vane Pumps



Performance and Specifications

WOB-L® Piston Pumps & Compressors

8003 DC



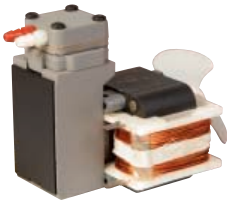
8005 DC



010



014



8006 DC



8009 DC



010DC



Pressure

MODEL SERIES	HP	MOTOR CAPACITY		COMPRESSOR PERFORMANCE (LPM @ PSI)								MAXIMUM PRESSURE (PSI)		
		VOLTAGE	TYPE	0	5	10	20	40	60	80	100	CONTINUOUS	INTERMITTENT	RESTART
8003-0052	—	6v	PM	3.0	2.3	1.6	0.9	—	—	—	—	11	29	11
8003-0055	—	12v	PM	3.0	2.3	1.6	0.9	—	—	—	—	11	29	11
8005-0077	—	12v	PM	7.2	6.1	5.1	3.6	—	—	—	—	22	36	33
8006-0071	—	12v	PM	15.8	13.0	10.4	7.5	3.0	—	—	—	14.5	43.5	1.45
8009-1020	—	12v	PM	11.4	10.2	9.0	7.5	5.3	3.8	3.0	2.0	17.4	101.5	8.7
8009-1032	—	24v	PM	11.4	10.2	9.0	7.5	5.3	3.8	3.0	2.0	17.4	101.5	8.7
010CD26	—	220/50	SP	8.8	7.4	6.3	3.3	—	—	—	—	10	30	0
010CA26	—	115/60	SP	10.5	8.8	7.4	4.1	—	—	—	—	10	30	0
010CDC26/12	—	12v	PM	10.5	8.8	7.4	4.1	—	—	—	—	10	30	30
014CDC20/12	—	12v	PM	11.0	9.7	8.4	6.9	5.2	—	—	—	20	50	50
014CA28	—	115/60	SP	13.0	12.1	11.2	9.8	8.0	5.0	—	—	100	100	0

Vacuum

MODEL SERIES	HP	MOTOR CAPACITY		VACUUM PERFORMANCE (LPM @ IN.HG.)						VACUUM (IN.HG.)		
		VOLTAGE	TYPE	0	5	10	15	20	25	MAXIMUM	RESTART	
8003-0064	—	6v	PM	3.0	1.7	1.1	.3	—	—	—	17.4	17.4
8003-0068	—	12v	PM	3.0	1.7	1.1	.3	—	—	—	17.4	17.4
8005-0039	—	12v	PM	7.2	5.3	3.5	2.1	—	—	—	23.0	23.0
8006-1068	—	12v	PM	15.8	12.1	7.9	4.4	2.1	—	—	23.6	3.0
010CD26	—	220/50	SP	8.8	7.4	6.2	3.8	1.5	—	—	22.3	0
010CA26	—	115/60	SP	10.5	9.0	7.5	4.6	2.0	—	—	22.3	0
010CDC26/12	—	12v	PM	10.5	8.8	7.2	4.3	1.6	—	—	22.3	22.3
014CDC20/12	—	12v	PM	11.0	8.5	6.5	4.9	2.5	—	—	25.0	25.3
014CA28	—	115/60	SP	13.0	11.5	10.0	7.0	3.8	—	—	25.0	0

WOB-L® Piston Pumps & Compressors

Pressure

MODEL SERIES	HP	MOTOR CAPACITY		COMPRESSOR PERFORMANCE (CFM @ PSI)								MAXIMUM PRESSURE (PSI)		
		VOLTAGE	TYPE	0	5	10	20	40	60	80	100	CONTINUOUS	INTERMITTENT	RESTART
115ADC56/12	1/15	12v	PM	.48	.44	.39	.36	.29	.25	.21	.16	N/A	120	120
125ADC56/12	1/15	12v	PM	.57	.54	.51	.45	.35	.29	.24	.16	N/A	120	120
215ADC38/12	1/6	12v	PM	.97	.92	.87	.76	.61	.46	.38	.30	N/A	120	120
307CDC56/12	1/5	12v	PM	.81	.78	.75	.69	.60	.53	.46	.40	N/A	150	150
327CDC40/12	1/5	12v	PM	1.12	1.09	1.06	.94	.81	.66	.57	.49	N/A	150	150
337CDC56/12	1/5	12v	PM	1.15	1.18	1.08	1.0	.88	.78	.70	.61	N/A	150	150
405AD38	1/20	220/50	SP	.20	.20	.20	.16	.11	—	—	—	20	40	0
405AA38	1/20	115/60	SP	.32	.29	.27	.24	.17	—	—	—	20	40	0
405ADC38/12	1/10	12v	PM	.79	.75	.71	.63	.50	.38	.33	.24	100	100	100
415CDC30/12	1/10	12v	PM	.92	.86	.81	.71	.55	.44	.34	.25	100	100	100
617CD22	1/8	220/50	SP	.69	.64	.59	.50	.35	.25	.17	.10	100	100	0
617CA22	1/8	115/60	SP	.78	.74	.69	.59	.42	.31	.18	.07	100	100	0

Dimensional drawings and other models available. Please call 1-800-521-2083 for additional information.

Specifications

Pressure										
MODEL SERIES	AMBIENT TEMPERATURE		ELECTRICAL RATED LOAD			INSUL. CLASS	SPEED (RPM)	THERMAL PROTECTOR	NET WEIGHT (LBS.)	DIMENSIONS (H x W x L)
	MINIMUM	MAXIMUM	RUN (AMPS)	POWER (WATTS)	START (AMPS)					
8003-0052	50° F	104° F	1.4	8.5	N/A	E	3000	NO	.4	2.1 x 1.2 x 3.2
8003-0055	50° F	104° F	0.7	8.5	N/A	E	3000	NO	.4	2.1 x 1.2 x 3.2
8005-0077	50° F	104° F	2.4	32	N/A	E	3500	NO	2.4	2.8 x 3.8 x 4.6
8006-0071	50° F	104° F	3.8	46	N/A	E	2800	NO	2.6	4.0 x 2.7 x 5.7
8009-1020	50° F	104° F	2.7	32	N/A	E	2800	NO	2.4	4.1 x 2.5 x 5.0
8009-1032	50° F	104° F	1.4	32	N/A	E	2800	NO	2.4	4.1 x 2.5 x 5.0
010CD26	50° F	104° F	0.7	70	.9	B	2500	YES	3.2	4.25 x 3.00 x 5.64
010CA26	50° F	104° F	1.3	85	2.1	B	3000	YES	3.2	4.25 x 3.00 x 5.64
010CDC26/12	50° F	104° F	2.5	N/A	6.7	B	3000	NO	1.6	4.01 x 2.45 x 5.17
014CDC20/12	50° F	104° F	3.0	N/A	8.0	B	2600	NO	2.3	4.13 x 1.90 x 4.40
014CA28	50° F	104° F	2.4	140	3.4	B	3200	YES	4.7	5.06 x 4.50 x 5.89



125



115

Vacuum										
MODEL SERIES	AMBIENT TEMPERATURE		ELECTRICAL RATED LOAD			INSUL. CLASS	SPEED (RPM)	THERMAL PROTECTOR	NET WEIGHT (LBS.)	DIMENSIONS (H x W x L)
	MINIMUM	MAXIMUM	RUN (AMPS)	POWER (WATTS)	START (AMPS)					
8003-0064	50° F	104° F	1.0	6	N/A	E	3000	NO	.4	2.1 x 1.2 x 3.2
8003-0068	50° F	104° F	0.5	6	N/A	E	3000	NO	.4	2.1 x 1.2 x 3.2
8005-0039	50° F	104° F	2.4	26	N/A	E	3500	NO	2.4	2.8 x 3.8 x 4.6
8006-1068	50° F	104° F	3.3	39	N/A	E	2800	NO	2.6	4.0 x 2.7 x 5.7
010CD26	50° F	104° F	0.7	70	.9	B	2500	YES	3.2	4.25 x 3.00 x 5.64
010CA26	50° F	104° F	1.3	85	2.1	B	3000	YES	3.2	4.25 x 3.00 x 5.64
010CDC26/12	50° F	104° F	2.5	N/A	6.7	B	3000	NO	1.6	4.01 x 2.45 x 5.17
014CDC20/12	50° F	104° F	3.0	N/A	8.0	B	2600	NO	2.3	4.13 x 1.90 x 4.40
014CA28	50° F	104° F	2.4	140	3.4	B	3200	YES	4.7	5.06 x 4.50 x 5.89



014DC



215

Specifications

Pressure										
MODEL SERIES	AMBIENT TEMPERATURE		ELECTRICAL RATED LOAD			INSUL. CLASS	SPEED (RPM)	THERMAL PROTECTOR	NET WEIGHT (LBS.)	DIMENSIONS (H x W x L)
	MINIMUM	MAXIMUM	RUN (AMPS)	POWER (WATTS)	START (AMPS)					
115ADC56/12	-22° F	158° F	9.0	N/A	32.0	B	4000	NO	1.6	5.12 x 1.64 x 5.22
125ADC56/12	-22° F	149° F	9.0	N/A	28.0	B	3700	NO	1.8	4.88 x 1.87 x 5.20
215ADC38/12	-40° F	158° F	16.0	N/A	50.0	B	3650	NO	3.0	4.46 x 2.10 x 6.20
307CDC56/12	-40° F	158° F	13.7	N/A	71.0	B	2300	YES	6.0	6.14 x 4.00 x 7.65
327CDC40/12	-40° F	158° F	16.5	N/A	110.0	B	3100	YES	6.1	6.14 x 4.00 x 7.65
337CDC56/12	-40° F	158° F	19.6	N/A	116.0	B	3200	YES	6.5	6.14 x 4.00 x 8.37
405AD38	50° F	104° F	1.0	120	1.00	A	1175	YES	5.5	5.30 x 4.25 x 6.72
405AA38	50° F	104° F	1.65	110	2.55	A	1575	YES	5.5	5.30 x 4.25 x 6.72
405ADC38/12	50° F	104° F	10.5	N/A	25.0	A	3310	YES	4.3	5.30 x 4.25 x 7.26
415CDC30/12	50° F	104° F	10.2	N/A	42.0	A	3846	YES	5.0	5.34 x 4.25 x 7.26
617CD22	50° F	104° F	1.3	174	2.1	B	1105	YES	11.0	6.78 x 5.00 x 8.10
617CA22	50° F	104° F	3.1	189	5.5	B	1540	YES	11.0	6.78 x 5.00 x 8.10



307/327/337



405DC



415DC

continued →

WOB-L® Piston Pumps & Compressors continued

669



688



689



617



1207



2250



Pressure														
MODEL SERIES	HP	MOTOR CAPACITY		COMPRESSOR PERFORMANCE (CFM @ PSI)								MAXIMUM PRESSURE (PSI)		
		VOLTAGE	TYPE	0	5	10	20	40	60	80	100	CONTINUOUS	INTERMITTENT	RESTART
617CD32	1/7	220/50	SP	1.01	.96	.91	.80	.59	—	—	—	40	40	0
617CA32	1/7	115/60	SP	1.22	1.16	1.10	.97	.74	.56	—	—	50	60	0
689CGHI44	1/3	220-240/50-230/60	PSC	1.65	1.50	1.45	1.30	1.04	—	—	—	45	45	0
689CE44	1/3	115/60	PSC	2.00	1.85	1.80	1.60	1.33	—	—	—	45	45	0
688CGHI44	1/3	220-240/50-230/60	PSC	1.27	1.24	1.22	1.14	.94	.82	.70	.58	100	100	0
688CE44	1/3	115/60	PSC	1.60	1.54	1.48	1.37	1.21	1.05	.91	.76	100	100	0
669CGHI44	1/3	220-240/50-230/60	PSC	1.65	1.50	1.45	1.30	1.04	—	—	—	40	40	0
669CE44	1/3	115/60	PSC	2.00	1.85	1.80	1.60	1.33	—	—	—	45	45	0
668CGHI44	1/3	220-240/50-230/60	PSC	1.27	1.24	1.22	1.14	.94	.82	.70	.58	100	100	0
668CE44	1/3	115/60	PSC	1.60	1.54	1.48	1.37	1.21	1.05	.91	.76	100	100	0
1207PK80	3/4	115/60	CS	3.78	3.72	3.66	3.43	3.04	2.69	2.33	1.99	125	125	120
2250ZC 35/24		24V	BLDC	1.21	.90	.84	.73	—	—	—	—	20	30	0
2505CE28	1/3	115/60	PSC	2.55	2.30	2.10	1.80	1.24	—	—	—	35	40	0
2505CHI38	1/3	220-240/50	PSC	2.70	2.56	2.40	2.10	—	—	—	—	25	30	0
2680CGHI42	1/3	220-240/50-230/60	PSC	3.59	3.50	3.38	3.08	—	—	—	—	30	30	0
2680CE44	1/3	115/60	PSC	4.40	4.34	4.23	3.84	—	—	—	—	30	30	0
2688CHI22	1/4	220-240/50	PSC	1.40	1.32	1.25	1.13	.85	.60	.38	.22	100	100	0
2688CE22	1/4	115/60	PSC	1.68	1.61	1.55	1.40	1.10	.80	.60	.40	100	100	0
2688CHI44	1/3	220-240/50	PSC	2.70	2.60	2.50	2.25	—	—	—	—	25	25	0
2688CE44	1/3	115/60	PSC	3.15	3.04	2.93	2.72	—	—	—	—	25	25	0
2689CGHI44	1/3	220-240/50-230/60	PSC	3.15	3.05	3.01	2.73	—	—	—	—	25	25	0
2689CE44	1/3	115/60	PSC	3.75	3.65	3.50	3.20	2.59	—	—	—	40	40	0
2669CGHI44	1/3	220-240/50-230/60	PSC	3.15	3.05	3.01	2.73	—	—	—	—	25	25	0
2669CE44	1/3	115/60	PSC	3.75	3.65	3.50	3.20	2.59	—	—	—	40	40	0
2668CHI22	1/4	220-240/50	PSC	1.40	1.32	1.25	1.13	.85	.60	.38	.22	100	100	0
2668CE22	1/4	115/60	PSC	1.68	1.61	1.55	1.40	1.10	.80	.60	.40	100	100	0
2668CHI44	1/3	220-240/50	PSC	2.70	2.60	2.50	2.25	—	—	—	—	25	25	0
2668CE44	1/3	115/60	PSC	3.15	3.04	2.93	2.72	—	—	—	—	25	25	0
2660CGHI42	1/3	220-240/50-230/60	PSC	3.59	3.50	3.38	3.08	—	—	—	—	30	30	0
2660CE44	1/3	115/60	PSC	4.40	4.34	4.23	3.84	—	—	—	—	30	30	0
2750CGHI50	1/3	220-240/50-230/60	PSC	4.34	4.17	4.00	3.61	2.92	—	—	—	30	40	0
2750CE50	1/3	115/60	PSC	5.35	5.09	4.84	4.38	—	—	—	—	30	30	0
2807CGH72	1	220/50-230/60	PSC	5.48	5.31	5.15	4.90	4.26	3.61	3.11	2.53	50	120	100
2807CE72	1	115/60	PSC	6.60	6.40	6.20	5.90	5.13	4.35	3.75	3.05	50	120	100

Vacuum												
MODEL SERIES	HP	MOTOR CAPACITY		VACUUM PERFORMANCE (CFM @ IN.HG.)						VACUUM (IN.HG.)		
		VOLTAGE	TYPE	0	5	10	15	20	25	MAXIMUM	RESTART	
307CDC56/12	1/5	12v	PM	.81	.48	—	—	.14	—	—	25.0	25.0
327CDC40/12	1/5	12v	PM	1.12	.69	—	—	.24	—	—	25.0	25.0
337CDC56/12	1/5	12v	PM	1.15	.83	—	—	.19	—	—	25.0	25.0
415CDC30/12	1/10	12v	PM	.92	.75	.54	.34	.20	—	—	24.6	24.6
617CD22	1/8	220/50	SP	.69	.53	.40	.26	.14	—	—	26.1	0
617CA22	1/8	115/60	SP	.78	.63	.47	.31	.16	.02	—	25.6	0
617CD32	1/7	220/50	SP	1.01	.75	.55	.35	.19	—	—	26.2	0
617CA32	1/7	115/60	SP	1.22	.87	.65	.45	.23	—	—	26.8	0
689CGHI44	1/3	220-240/50-230/60	PSC	1.65	1.23	.92	.63	.30	.09	—	26.0	0
689CE44	1/3	115/60	PSC	2.00	1.55	1.20	.80	.42	.13	—	26.0	0
2250ZC 35/24		24V	BLDC	1.21	.98	.89	.65	.33	—	—	22.0	0

Specifications continued

Dimensional drawings and other models available. Please call 1-800-521-2083 for additional information.

Pressure										
MODEL SERIES	AMBIENT TEMPERATURE		ELECTRICAL RATED LOAD			INSUL. CLASS.	SPEED (RPM)	THERMAL PROTECTOR	NET WEIGHT (LBS.)	DIMENSIONS (H x W x L)
	MINIMUM	MAXIMUM	RUN (AMPS)	POWER (WATTS)	START (AMPS)					
617CD32	50° F	104° F	1.9	225	2.5	B	1150	YES	11.0	6.78 x 5.00 x 8.10
617CA32	50° F	104° F	4.6	285	6.4	B	1400	YES	11.0	6.78 x 5.00 x 8.10
689CGHI44	50° F	104° F	1.2/1.2	240/260	3.9/3.8	B	1400/1700	YES	11.0	7.19 x 5.38 x 8.01
689CE44	50° F	104° F	3.7	330	9.4	B	1640	YES	11.0	7.19 x 5.38 x 8.01
688CGHI44	50° F	104° F	1.5/1.3	270/270	3.9/3.8	B	1400/1700	YES	14.5	6.68 x 5.18 x 7.87
688CE44	50° F	104° F	3.6	325	9.2	B	1660	YES	11.75	6.68 x 5.18 x 7.87
669CGHI44	50° F	104° F	1.2/1.2	240/260	3.9/3.8	B	1400/1700	YES	13.0	7.19 x 5.18 x 7.12
669CE44	50° F	104° F	3.6	310	9.4	B	1660	YES	11.0	6.75 x 5.18 x 7.20
668CGHI44	50° F	104° F	1.5/1.3	270/270	3.9/3.8	B	1380/1720	YES	14.5	7.19 x 5.18 x 7.28
668CE44	50° F	104° F	3.6	325	9.2	B	1650	YES	11.75	7.19 x 5.18 x 7.28
1207PK80	50° F	104° F	10.6	800	38.5	B	1700	YES	26.0	10.01 x 6.53 x 10.70
2250ZC 35/24	30° F	104° F	3.0	75	—	B	2000	YES	2.5	4.21 x 3.09 x 6.04
2505CE28	50° F	104° F	2.7	310	5.9	B	1630	YES	11.75	6.46 x 4.44 x 9.25
2505CHI38	50° F	104° F	1.4/1.5	305/340	3.1/3.3	B	1300/1330	YES	12.5	6.46 x 4.44 x 10.25
2680CGHI42	50° F	104° F	1.9/2.2	405/475	5.8/5.6	B	1400/1680	YES	15.0	7.09 x 7.40 x 9.61
2680CE44	50° F	104° F	5.0	530	14.6	B	1670	YES	14.8	7.09 x 7.40 x 9.61
2688CHI22	50° F	104° F	1.2	210	3.6	B	1410	YES	14.3	6.68 x 6.20 x 10.09
2688CE22	50° F	104° F	3.3	250	12.8	B	1740	YES	14.3	6.68 x 6.20 x 10.09
2688CHI44	50° F	104° F	1.6	325	3.8	B	1290	YES	16.1	6.68 x 6.31 x 9.52
2688CE44	50° F	104° F	4.7	470	12.8	B	1600	YES	16.1	6.68 x 6.20 x 10.09
2689CGHI44	50° F	104° F	1.6/2.0	420	5.7/5.5	B	1410/1680	YES	15.4	7.09 x 7.40 x 9.61
2689CE44	50° F	104° F	4.7	500	15.8	B	1680	YES	15.4	7.09 x 7.40 x 9.61
2669CGHI44	50° F	104° F	1.6/1.5	340/355	4.1/4.4	B	1350/1400	YES	15.4	6.75 x 5.18 x 9.37
2669CE44	50° F	104° F	4.7	500	15.8	B	1680	YES	15.4	6.75 x 5.18 x 9.37
2668CHI22	50° F	104° F	1.2	210	3.6	B	1410	YES	14.3	7.09 x 5.18 x 9.31
2668CE22	50° F	104° F	3.3	250	12.8	B	1740	YES	14.3	7.09 x 5.18 x 9.31
2668CHI44	50° F	104° F	1.6	325	3.8	B	1290	YES	16.1	7.09 x 5.18 x 9.31
2668CE44	50° F	104° F	4.7	470	12.8	B	1600	YES	16.1	7.09 x 5.18 x 9.31
2660CGHI42	50° F	104° F	1.9/2.2	405/475	5.8/5.6	B	1400/1680	YES	15.0	6.75 x 5.34 x 9.36
2660CE44	50° F	104° F	4.8	530	15.4	B	1690	YES	15.0	6.75 x 5.34 x 9.36
2750CGHI50	50° F	104° F	2.2/2.4	520/540	8.7	B	1400/1675	YES	21.0	9.29 x 5.37 x 10.09
2750CE50	50° F	104° F	4.6	513	17.0	B	1690	YES	20.0	9.29 x 5.37 x 10.09
2807CGH72	50° F	104° F	5.0/4.8	948/929	20.0	B	1425	YES	39.0	10.03 x 6.54 x 15.71
2807CE72	50° F	104° F	8.5	902	44.0	B	1700	YES	39.0	10.03 x 6.54 x 15.71

2680/2688/2689



2660/2669/2668



2750



2807



Vacuum										
MODEL SERIES	AMBIENT TEMPERATURE		ELECTRICAL RATED LOAD			INSUL. CLASS.	SPEED (RPM)	THERMAL PROTECTOR	NET WEIGHT (LBS.)	DIMENSIONS (H x W x L)
	MINIMUM	MAXIMUM	RUN (AMPS)	POWER (WATTS)	START (AMPS)					
307CDC56/12	-40° F	158° F	13.7	N/A	71.0	B	2300	YES	6.0	6.14 x 4.00 x 7.65
327CDC40/12	-40° F	158° F	16.5	N/A	110.0	B	3100	YES	6.1	6.14 x 4.00 x 7.65
337CDC56/12	-40° F	158° F	19.6	N/A	116.0	B	3200	YES	6.5	6.14 x 4.00 x 8.37
415CDC30/12	50° F	104° F	10.2	N/A	42.0	A	3846	YES	5.0	5.34 x 4.25 x 7.26
617CD22	50° F	104° F	1.3	174	2.1	B	1105	YES	11.0	6.78 x 5.00 x 8.10
617CA22	50° F	104° F	3.1	189	5.5	B	1540	YES	11.0	6.78 x 5.00 x 8.10
617CD32	50° F	104° F	1.9	225	2.5	B	1150	YES	11.0	6.78 x 5.00 x 8.10
617CA32	50° F	104° F	4.6	285	6.4	B	1400	YES	11.0	6.78 x 5.00 x 8.10
689CGHI44	50° F	104° F	1.2/1.2	240/260	3.9/3.8	B	1400/1700	YES	11.0	7.19 x 5.38 x 8.01
689CE44	50° F	104° F	3.7	330	9.4	B	1640	YES	11.0	7.19 x 5.38 x 8.01
2250ZC 35/24	30° F	104° F	3.0	75	—	B	2000	YES	2.5	4.21 x 3.09 x 6.04

continued →

WOB-L® Piston Pumps & Compressors continued

2505



2680/2688/2689



2660/2669/2668



Vacuum												
MODEL SERIES	HP	MOTOR CAPACITY		VACUUM PERFORMANCE (CFM @ IN.HG.)						VACUUM (IN.HG.)		
		VOLTAGE	TYPE	0	5	10	15	20	25	MAXIMUM	RESTART	
688CGHI44	1/3	220-240/50-230/60	PSC	1.27	1.22	.81	.55	.32	.09	27.5	0	
688CE44	1/3	115/60	PSC	1.60	1.15	.90	.62	.33	.10	27.6	0	
669CGHI44	1/3	220-240/50-230/60	PSC	1.65	1.23	.92	.63	.30	.09	26.0	0	
669CE44	1/5	115/60	PSC	2.00	1.20	.96	.64	.36	.11	26.0	0	
668CGHI44	1/3	220-240/50-230/60	PSC	1.27	1.22	.81	.55	.32	.09	27.5	0	
668CE44	1/3	115/60	PSC	1.60	1.15	.90	.62	.33	.10	27.6	0	
2505CE28	1/3	115/60	PSC	2.55	1.95	1.45	.95	.45	.10	25.3	0	
2505CHI38	1/3	220-240/50	PSC	2.70	2.25	1.65	1.10	.60	.18	25.5	0	
2680CGHI42	1/3	220-240/50-230/60	PSC	3.59	2.44	1.83	1.26	.65	.11	27.0	0	
2680CE44	1/3	115/60	PSC	4.40	2.96	2.22	1.52	.83	.16	27.0	0	
2688CHI22	1/4	220-240/50	PSC	1.40	1.00	.80	.39	.29	.09	26.3	0	
2688CE22	1/4	115/60	PSC	1.68	1.20	.93	.63	.33	.10	26.2	0	
2688CHI44	1/3	220-240/50	PSC	2.70	2.00	1.40	.98	.57	.17	27.6	0	
2688CE44	1/3	115/60	PSC	3.15	2.30	1.60	1.10	.64	.18	27.6	0	
2688VGI44	1/3	220-240/50-230/60	PSC	1.36	1.16	.88	.65	.41	.19	29.0	0	
2688VE44	1/3	115/60	PSC	1.60	1.20	.98	.69	.48	.16	29.0	0	
2689CGHI44	1/3	220-240/50-230/60	PSC	3.15	2.66	1.99	1.38	.72	.18	27.4	0	
2689CE44	1/3	115/60	PSC	3.75	2.75	2.15	1.49	.86	.19	27.4	0	
2669CGHI44	1/3	220-240/50	PSC	3.10	2.38	1.68	1.14	.64	.18	27.4	0	
2669CE44	1/3	115/60	PSC	3.75	2.75	2.15	1.49	.86	.19	27.3	0	
2668CHI22	1/4	220-240/50	PSC	1.40	1.00	.80	.39	.29	.09	26.2	0	
2668CE22	1/4	115/60	PSC	1.68	1.20	.93	.63	.33	.10	26.2	0	
2668CHI44	1/3	220-240/50	PSC	2.70	2.00	1.40	.98	.57	.17	27.6	0	
2668CE44	1/3	115/60	PSC	3.15	2.30	1.60	1.10	.64	.18	27.6	0	
2660CGHI42	1/3	220-240/50-230/60	PSC	3.59	2.44	1.83	1.26	.65	.11	27.0	0	
2660CE44	1/3	115/60	PSC	4.40	2.96	2.22	1.52	.83	.16	27.0	0	
2750CGHI50	1/3	220-240/50-230/60	PSC	4.34	3.08	2.40	1.60	.89	.14	27.0	0	
2750CE50	1/3	115/60	PSC	5.35	3.65	2.85	1.90	1.05	.15	26.0	0	
2807CGH72	1	220/50-230/60	PSC	5.48	3.66	2.21	1.41	.56	—	25.0	0	
2807CE72	1	115/60	PSC	6.60	3.60	2.66	1.80	.88	—	25.0	0	

Articulated Piston Compressors

TA-2101DC
TA-3101DC
TA-4101DC



Pressure															
MODEL SERIES	MFG. CODE	HP	MOTOR CAPACITY		COMPRESSOR PERFORMANCE (CFM @ PSI)								MAXIMUM PRESSURE (PSI)		
			VOLTAGE	TYPE	0	5	10	20	40	60	80	100	CONTINUOUS	INTERMITTENT	RESTART
TA-2101DC	270046	1/6	12v	PM	1.40	1.32	1.25	1.10	.80	.60	.45	.35	100	100	100
TA-3101DC	270024	1/4	12v	PM	1.70	1.62	1.55	1.40	1.18	1.00	.85	.70	100	100	100
TA-4101DC	270025	1/3	12v	PM	2.20	2.07	1.95	1.75	1.45	1.25	1.10	.95	100	100	100
TA-4101DC	270047	1/3	24v	PM	2.20	2.07	1.95	1.75	1.45	1.25	1.10	.95	100	100	100
TA-5102DC	270058	1/2	12v	PM	4.06	3.81	3.54	3.42	3.02	2.72	2.12	1.61	100	100	100
VX050HJ	184048	1/2	12v	PM	5.40	5.09	4.78	4.15	3.10	2.05	1.73	1.40	100	100	100
VX050HK	184056	1/2	24v	PM	5.40	4.90	4.40	3.70	2.90	2.20	1.60	1.20	100	100	100

Specifications continued

Vacuum										
MODEL SERIES	AMBIENT TEMPERATURE		ELECTRICAL RATED LOAD			INSUL. CLASS	SPEED (RPM)	THERMAL PROTECTOR	NET WEIGHT (LBS.)	DIMENSIONS (H x W x L)
	MINIMUM	MAXIMUM	RUN (AMPS)	POWER (WATTS)	START (AMPS)					
688CGHI44	50° F	104° F	1.5/1.3	270/270	3.9/3.8	B	1400/1700	YES	14.5	6.68 x 5.18 x 7.87
688CE44	50° F	104° F	3.6	325	9.2	B	1660	YES	11.75	6.68 x 5.18 x 7.87
669CGHI44	50° F	104° F	1.2/1.2	240/260	3.9/3.8	B	1400/1700	YES	13.0	7.19 x 5.18 x 7.12
669CE44	50° F	104° F	3.6	310	9.4	B	1660	YES	11.0	6.75 x 5.18 x 7.20
668CGHI44	50° F	104° F	1.5/1.3	270/270	3.9/3.8	B	1380/1720	YES	14.5	7.19 x 5.18 x 7.28
668CE44	50° F	104° F	3.6	325	9.2	B	1650	YES	11.75	7.19 x 5.18 x 7.28
2505CE28	50° F	104° F	2.7	310	5.9	B	1630	YES	11.75	6.46 x 4.44 x 9.25
2505CHI38	50° F	104° F	1.4/1.5	305/340	3.1/3.3	B	1300/1330	YES	12.5	6.46 x 4.44 x 10.25
2680CGHI42	50° F	104° F	1.9/2.2	405/475	5.8/5.6	B	1400/1680	YES	15.0	7.09 x 7.40 x 9.61
2680CE44	50° F	104° F	5.0	530	14.6	B	1670	YES	14.8	7.09 x 7.40 x 9.61
2688CHI22	50° F	104° F	1.2	210	3.6	B	1410	YES	14.3	6.68 x 6.20 x 10.09
2688CE22	50° F	104° F	3.3	250	12.8	B	1740	YES	14.3	6.68 x 6.20 x 10.09
2688CHI44	50° F	104° F	1.6	325	3.8	B	1290	YES	16.1	6.68 x 6.31 x 9.52
2688CE44	50° F	104° F	4.7	470	12.8	B	1600	YES	16.1	6.68 x 6.20 x 10.09
2688VGI44	50° F	104° F	0.7/0.8/0.8	135/155/160	3.7/4.1/3.8	B	1470/1480/1750	YES	16.4	6.68 x 6.20 x 10.09
2688VE44	50° F	104° F	3.2	240	12.2	B	1750	YES	16.4	6.68 x 6.20 x 10.09
2689CGHI44	50° F	104° F	1.6/2.0	420	5.7/5.5	B	1410/1680	YES	15.4	7.09 x 7.40 x 9.61
2689CE44	50° F	104° F	4.7	500	15.8	B	1680	YES	15.4	7.09 x 7.40 x 9.61
2669CGHI44	50° F	104° F	1.6/1.5	340/355	4.1/4.4	B	1350/1400	YES	15.4	6.75 x 5.18 x 9.37
2669CE44	50° F	104° F	4.7	500	15.8	B	1680	YES	15.4	6.75 x 5.18 x 9.37
2668CHI22	50° F	104° F	1.2	210	3.6	B	1410	YES	14.3	7.09 x 5.18 x 9.31
2668CE22	50° F	104° F	3.3	250	12.8	B	1740	YES	14.3	7.09 x 5.18 x 9.31
2668CHI44	50° F	104° F	1.6	325	3.8	B	1290	YES	16.1	7.09 x 5.18 x 9.31
2668CE44	50° F	104° F	4.7	470	12.8	B	1600	YES	16.1	7.09 x 5.18 x 9.31
2660CGHI42	50° F	104° F	1.9/2.2	405/475	5.8/5.6	B	1400/1680	YES	15.0	6.75 x 5.34 x 9.36
2660CE44	50° F	104° F	4.8	530	15.4	B	1690	YES	15.0	6.75 x 5.34 x 9.36
2750CGHI50	50° F	104° F	2.2/2.4	520/540	8.7	B	1400/1675	YES	21.0	9.29 x 5.37 x 10.09
2750CE50	50° F	104° F	4.6	513	17.0	B	1690	YES	20.0	9.29 x 5.37 x 10.09
2807CGH72	50° F	104° F	5.0/4.8	948/929	20.0	B	1425	YES	39.0	10.03 x 6.54 x 15.71
2807CE72	50° F	104° F	8.5	902	44.0	B	1700	YES	39.0	10.03 x 6.54 x 15.71

Dimensional drawings and other models available. Please call 1-800-521-2083 for additional information.

2750



2807



Specifications

Pressure										
MODEL SERIES	AMBIENT TEMPERATURE		ELECTRICAL RATED LOAD			INSUL. CLASS	SPEED (RPM)	THERMAL PROTECTOR	NET WEIGHT (LBS.)	DIMENSIONS (H x W x L)
	MINIMUM	MAXIMUM	RUN (AMPS)	POWER (WATTS)	START (AMPS)					
TA-2101DC	32° F	104° F	23.0	N/A	149	H	1800	NO	16.0	5.83 x 8.61 x 10.54
TA-3101DC	32° F	104° F	26.0	N/A	156	H	1800	NO	22.0	6.75 x 5.34 x 9.36
TA-4101DC	32° F	104° F	28.0	N/A	198	H	1800	NO	22.0	5.83 x 8.61 x 12.54
TA-4101DC	32° F	104° F	18.5	N/A	92.5	H	1800	NO	25.0	5.83 x 9.12 x 12.54
TA-5102DC	32° F	104° F	45.0	N/A	230	H	1800	NO	40.0	6.81 x 9.96 x 15.32
VX050HJ	32° F	104° F	50.0	N/A	266	H	1800	NO	37.0	9.5 x 12.43 x 17.97
VX050HK	32° F	104° F	50.0	N/A	266	H	1800	NO	37.0	9.5 x 12.43 x 17.97

VX050LJ
VX050HJ



Articulated Piston Compressors

HP-1500



Pressure																
MODEL SERIES	MFG. CODE	HP	MOTOR CAPACITY		COMPRESSOR PERFORMANCE (CFM @ PSI)									MAXIMUM PRESSURE (PSI)		
			VOLTAGE	TYPE	0	5	10	20	40	60	80	100	CONTINUOUS	INTERMITTENT	RESTART	
HP-1000	230001	1.0	115/230/60/1	CS/CR	7.5	7.1	6.8	6.2	5.2	4.8	3.7	3.3	125	125	125	
HP-1000	230005	1.0	230/460/60/3	Poly	7.5	7.1	6.8	6.2	5.2	4.8	3.7	3.3	125	125	125	
HP-1050	230011	1.0	115/230/60/1	CS/CR	9.8	9.2	8.6	7.7	6.4	—	—	—	50	50	50	
HP-1050	230015	1.0	230/460/60/3	Poly	9.8	9.2	8.6	7.7	6.4	—	—	—	50	50	50	
HP-1500	230002	1.5	115/230/60/50/1	CS/CR	10.0	9.5	9.0	8.4	7.3	6.6	5.9	5.2	125	125	125	
HP-1500	230006	1.5	208/230/460/60/3	Poly	10.0	9.5	9.0	8.4	7.3	6.6	5.9	5.2	125	125	125	
HP-1550	230012	1.5	115/230/60/50/1	CS/CR	10.4	10.0	9.6	8.9	8.0	—	—	—	50	50	50	
HP-1550	230016	1.5	208/230/460/60/3	Poly	10.4	10.0	9.6	8.9	8.0	—	—	—	50	50	50	

Vacuum															
MODEL SERIES	MFG. CODE	HP	MOTOR CAPACITY		VACUUM PERFORMANCE (CFM @ IN. HG)								MAXIMUM VACUUM (IN. HG)		
			VOLTAGE	TYPE	0	5	10	15	20	25	MAXIMUM	INTERMITTENT	RESTART		
HP-100V	230021	1.0	115/230/60/1	CS/CR	6.9	5.6	4.1	2.9	1.7	0.4	—	—	27.5	—	27.5
HP-100V	230023	1.0	230/460/3	Poly	8.0	6.5	4.8	3.3	1.9	0.5	—	—	27.5	—	27.5

Articulated Piston Compressors

LGH-106/LGH-210/LGH-310



GH-3101



Pressure																
MODEL SERIES	MFG. CODE	HP	MOTOR CAPACITY		COMPRESSOR PERFORMANCE (CFM @ PSI)									MAXIMUM PRESSURE (PSI)		
			VOLTAGE	TYPE	0	5	10	20	40	60	80	100	CONTINUOUS	INTERMITTENT	RESTART	
LGH-106	160203	1/12	115/60/50/1	SPh	1.20	1.07	.95	.75	.22	—	—	—	60	60	60	
LGH-106	160965	1/12	230/60/50/1	SPh	.95	.84	.73	.59	.18	—	—	—	60	60	60	
LGH-210	160994	1/6	115/60/50/1	SPh	1.25	1.21	1.17	.95	.73	.60	.45	.35	100	100	100	
LGH-210	160995	1/6	230/60/50/1	SPh	.98	.91	.85	.75	.60	.49	.39	.25	100	100	100	
LGH-310	260463	1/4	115/230/60/1	CS	1.60	1.50	1.40	1.25	1.05	.85	.70	.60	100	100	100	
GH-3101B	160640	1/4	115/230/60/1	CS	1.70	1.62	1.55	1.40	1.20	1.05	.90	.75	100	100	100	
GH-410B	160641	1/3	115/230/60/1	CS	2.60	2.50	2.40	2.20	1.80	1.60	1.35	1.20	100	100	100	
GH-417B	160644	1/3	115/230/60/1	CS	1.40	1.39	1.38	1.35	1.30	1.25	1.20	1.15	175	175	175	
GH-510B	160642	1/2	115/230/60/1	CS	3.20	3.05	2.90	2.68	2.40	2.10	1.90	1.65	100	100	100	
GH-517B	160645	1/2	115/230/60/1	CS	1.80	1.79	1.79	1.78	1.75	1.72	1.69	1.65	175	175	175	
GH-610B	160643	3/4	115/230/60/1	CS	4.30	4.15	4.00	3.75	3.30	2.95	2.60	2.40	100	100	100	
GH-617B	160646	3/4	115/230/60/1	CS	2.40	2.39	2.39	2.37	2.34	2.31	2.28	2.25	175	175	175	

Articulated Piston Compressors

TA-5102



Pressure																
MODEL SERIES	MFG. CODE	HP	MOTOR CAPACITY		COMPRESSOR PERFORMANCE (CFM @ PSI)									MAXIMUM PRESSURE (PSI)		
			VOLTAGE	TYPE	0	5	10	20	40	60	80	100	CONTINUOUS	INTERMITTENT	RESTART	
TA-2101	270003	1/6	115/60/50/1	SPh	1.25	1.21	1.17	.95	.73	.60	.45	.35	100	100	100	
TA-3101	270005	1/4	115/230/60/1	CS	1.60	1.50	1.40	1.25	1.03	.85	.71	.60	100	100	100	
TA-4101	270015	1.3	115/60/1	CS/CR	2.20	2.12	2.05	1.90	1.65	1.45	1.25	1.10	100	100	100	
TA-4102	270010	1/3	115/230/60/1	CS	2.60	2.50	2.40	2.20	1.80	1.45	1.35	1.20	100	100	100	
TA-5102	270011	1/2	115/230/60/1	CS	3.20	3.05	2.90	2.68	2.40	2.10	1.90	1.65	100	100	100	
TA-6102	270012	3/4	115/230/60/1	CS	4.30	4.15	4.00	3.75	3.30	2.95	2.60	2.40	100	100	100	
TA-7102	270045		115/230/60/1	CS/CR	5.40	5.30	5.20	5.00	4.60	4.20	3.75	3.30	100	100	100	

Specifications

Dimensional drawings and other models available. Please call 1-800-521-2083 for additional information.

Pressure										
MODEL SERIES	AMBIENT TEMPERATURE		ELECTRICAL RATED LOAD			INSUL. CLASS	SPEED (RPM)	THERMAL PROTECTOR	NET WEIGHT (LBS.)	DIMENSIONS (H x W x L)
	MINIMUM	MAXIMUM	RUN (AMPS)	POWER (WATTS)	START (AMPS)					
HP-1000	40° F	104° F	11.2/5.6	1200	77/38	B	1725	YES	70.0	9.22 x 17.75 x 19.80
HP-1000	40° F	104° F	3.5/3.7/1.85	1220	31/15.5	B	1725	NO	70.0	9.22 x 17.75 x 19.80
HP-1050	40° F	104° F	11.2/5.6	1200	77/38	B	1725	YES	70.0	9.22 x 17.75 x 19.80
HP-1050	40° F	104° F	3.5/3.7/1.85	1220	31/15.5	B	1725	NO	70.0	9.22 x 17.75 x 19.80
HP-1500	40° F	104° F	13.0/6.5	1600	100.3/50	B	1725	YES	80.0	9.22 x 17.75 x 21.05
HP-1500	40° F	104° F	4.8/4.6/2.3	1600	46.8/23.4	B	1725	NO	80.0	9.22 x 17.75 x 20.63
HP-1550	40° F	104° F	13.0/6.5	1600	100.3/50	B	1725	YES	80.0	9.22 x 17.75 x 21.05
HP-1550	40° F	104° F	4.8/4.6/2.3	1600	46.8/23.4	B	1725	NO	80.0	9.22 x 17.75 x 20.63

Vacuum										
MODEL SERIES	AMBIENT TEMPERATURE		ELECTRICAL RATED LOAD			INSUL. CLASS	SPEED (RPM)	THERMAL PROTECTOR	NET WEIGHT (LBS.)	DIMENSIONS (H x W x L)
	MINIMUM	MAXIMUM	RUN (AMPS)	POWER (WATTS)	START (AMPS)					
HP-100V	40° F	104° F	11.2/5.6	1200	77/38	B	1725	YES	70.0	9.22 x 17.75 x 19.80
HP-100V	40° F	104° F	3.5/3.7/1.85	1220	31/15.5	B	1725	NO	70.0	9.22 x 17.75 x 19.80

Specifications

Pressure										
MODEL SERIES	AMBIENT TEMPERATURE		ELECTRICAL RATED LOAD			INSUL. CLASS	SPEED (RPM)	THERMAL PROTECTOR	NET WEIGHT (LBS.)	DIMENSIONS (H x W x L)
	MINIMUM	MAXIMUM	RUN (AMPS)	POWER (WATTS)	START (AMPS)					
LGH-106	32° F	104° F	2.1/2.6	150/200	7.8/8.4	A	1725/1425	YES	16.0	8.75 x 6.46 x 10.53
LGH-106	32° F	104° F	1.3/1.7	150/200	9.0/9.1	A	1725/1425	YES	16.0	8.75 x 6.46 x 10.53
LGH-210	32° F	104° F	3.3/4.1	225/260	23/23.8	A	1725/1425	YES	20.0	8.75 x 6.46 x 11.13
LGH-210	32° F	104° F	16.5/2.05	280/310	16.1/16.6	A	1725/1425	YES	20.0	8.75 x 6.46 x 11.13
LGH-310	32° F	104° F	5.0/2.5	350	23.2/11.9	B	1725	YES	21.0	8.75 x 6.46 x 11.57
GH-3101B	32° F	104° F	7.4/3.7	400	24.0/14.2	B	1725	YES	35.0	8.75 x 10.35 x 15.38
GH-410B	32° F	104° F	8.0/4.0	450	34.8/18.0	B	1725	YES	38.0	8.75 x 11.57 x 16.00
GH-417B	32° F	104° F	8.0/4.0	450	34.8/18.0	B	1725	YES	45.0	10.75 x 12.10 x 16.00
GH-510B	32° F	104° F	7.3/3.6	760	37.0/19.7	B	1725	YES	45.0	8.75 x 11.58 x 16.25
GH-517B	32° F	104° F	7.3/3.6	760	37.0/19.7	B	1725	YES	51.0	10.75 x 12.10 x 16.25
GH-610B	32° F	104° F	10.6/5.3	825	60.0/30.0	B	1725	YES	50.0	8.75 x 11.58 x 16.75
GH-617B	32° F	104° F	10.6/5.3	825	60.0/30.0	B	1725	YES	56.0	10.75 x 12.53 x 16.75

GH-417/GH-517B/GH-617



GH-410/GH-510/GH-610B

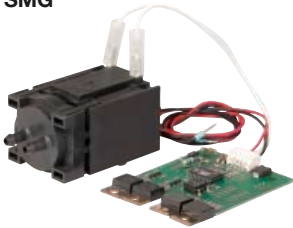


Specifications

Pressure										
MODEL SERIES	AMBIENT TEMPERATURE		ELECTRICAL RATED LOAD			INSUL. CLASS	SPEED (RPM)	THERMAL PROTECTOR	NET WEIGHT (LBS.)	DIMENSIONS (H x W x L)
	MINIMUM	MAXIMUM	RUN (AMPS)	POWER (WATTS)	START (AMPS)					
TA-2101	32° F	104° F	3.3/4.1	225/260	23/23.8	A	1725/1425	YES	20.0	7.94 x 5.70 x 11.13
TA-3101	32° F	104° F	5.0/2.5	350	23.2/11.9	B	1725	YES	21.0	7.91 x 5.70 x 11.57
TA-4101	32° F	104° F	3.5	430	23.2	B	1725	YES	24.0	7.91 x 5.70 x 12.26
TA-4102	32° F	104° F	8.0/4.0	450	34.8/18	B	1725	YES	36.0	6.88 x 9.83 x 14.03
TA-5102	32° F	104° F	7.2/3.6	760	37/19.7	B	1725	YES	37.0	6.88 x 9.83 x 15.06
TA-6102	32° F	104° F	10.6/5.3	825	60/30	B	1725	YES	44.0	6.88 x 9.83 x 15.31
TA-7102	32° F	104° F	12.0/8.0	1625	65/33	B	1725	YES	61.0	6.88 x 11.77 x 16.11

Linear Pumps & Compressors

SMG



Pressure															
MODEL SERIES	MFG. CODE	HP	MOTOR CAPACITY		COMPRESSOR PERFORMANCE (LPM @ PSI)							MAXIMUM PRESSURE (PSI)			
			VOLTAGE	TYPE	0	1	2	3	4	5	6	7	CONTINUOUS	INTERMITTENT	RESTART
SMG 4	9040110	—	230	LM	1.2	.90	.70	.49	.27	.01	—	—	5.0	—	—
SMG 4	9041110	—	115	LM	1.3	1.00	.80	.49	.27	.01	—	—	5.0	—	—
SMG 4	9045110	—	24v	LM	1.1	.80	.60	.35	.10	—	—	—	4.35	—	—
SMG 4	9046110	—	12v	LM	1.1	.80	.55	.24	.05	—	—	—	4.35	—	—

Vacuum

MODEL SERIES	MFG. CODE	HP	MOTOR CAPACITY		VACUUM PERFORMANCE (LPM @ IN.HG)						VACUUM (IN.HG)		
			VOLTAGE	TYPE	0	2	4	6	8	10	MAXIMUM	RESTART	
SMG 4	9040110	—	230	LM	1.20	.90	.65	.25	.04	—	—	8.9	—
SMG 4	9041110	—	115	LM	1.30	.95	.65	.24	—	—	—	7.4	—
SMG 4	9045110	—	24v	LM	1.10	.80	.52	.17	—	—	—	7.4	—
SMG 4	9046110	—	12v	LM	1.10	.80	.52	.17	—	—	—	7.4	—

Linear Pumps & Compressors

5006/5015/5020



5030-A, 5040-A, 5060-A
5030V-A, 5040V-A 5060V-A



5078S/5100S/5120S



5150S/5200S



Pressure														
MODEL SERIES	MFG. CODE	HP	MOTOR CAPACITY		COMPRESSOR PERFORMANCE (CFM @ PSI)							MAXIMUM PRESSURE (PSI)		
			VOLTAGE	TYPE	0	1	2	3	4	5	6	7	CONTINUOUS	RESTART
5006	150018	—	115	LM	.89	.48	.15	—	—	—	—	—	2.0	2.6
5015	150026	—	115	LM	1.06	.79	.48	.19	—	—	—	—	2.5	3.8
5020	150000	—	115	LM	1.24	1.00	.72	.41	.16	—	—	—	3.0	4.5
5030-A	150035	—	115	LM	2.00	1.62	1.20	.69	.14	—	—	—	3.0	4.2
5040-A	150037	—	115	LM	2.30	1.96	1.58	1.12	.60	.10	—	—	3.5	5.1
5060-A	150039	—	115	LM	3.20	2.80	2.38	1.88	1.40	.84	.31	—	4.0	6.3
5078S	150074	—	115	LM	3.60	3.45	3.20	2.75	2.10	1.35	.50	—	3.5	6.3
5100S	150044	—	115	LM	4.62	4.37	3.97	3.41	2.71	1.90	1.06	—	3.5	7.2
5120S	150045	—	115	LM	5.67	5.38	4.92	4.32	3.64	2.84	2.00	1.16	3.5	8.3
5150S	150046	—	115	LM	7.73	7.10	6.09	5.01	4.20	2.30	.72	—	3.5	6.6
5200S	150047	—	115	LM	9.55	8.78	8.05	7.11	5.90	4.76	3.33	1.61	3.5	8.2
6005SE	150081	—	115	LM	.41	.26	.12	.01	—	—	—	—	2.0	3.0
6015SE	150098	—	115	LM	1.10	.62	.09	—	—	—	—	—	1.5	2.3
6025SE	150057	—	115	LM	2.00	1.62	1.20	.70	.38	—	—	—	4.0	5.0
6025SE/12v	150108	—	12v	LM	1.50	1.08	.73	.41	.16	—	—	—	4.0	4.7
6025SE/24v	150109	—	24v	LM	1.50	1.08	.73	.41	.16	—	—	—	4.0	4.7

Vacuum

MODEL SERIES	MFG. CODE	HP	MOTOR CAPACITY		VACUUM PERFORMANCE (CFM @ IN.HG)						VACUUM (IN.HG)		
			VOLTAGE	TYPE	0	2	4	6	8	10	MAXIMUM	RESTART	
6025SE	150057	—	115	LM	2.00	1.62	1.25	.80	.35	—	—	4.0	4.0
6025SE/12v	150108	—	12v	LM	1.50	1.09	.74	.43	.17	—	—	4.0	—
6025SE/24v	150109	—	24v	LM	1.50	1.09	.74	.43	.17	—	—	4.0	—
6015SE	150098	—	115	LM	1.10	.63	.10	—	—	—	—	1.5	—

MODEL SERIES	MFG. CODE	HP	MOTOR CAPACITY		VACUUM PERFORMANCE (CFM @ IN.HG)						VACUUM (IN.HG)		
			VOLTAGE	TYPE	0	2.5	5	7	8	10	MAXIMUM	RESTART	
5006V	150024	—	115/60/1	LM	0.94	0.4	0.09	—	—	—	—	4.0	4.0
5015V	150025	—	115/60/1	LM	1.11	0.69	0.31	—	—	—	—	5.5	5.5
5020V	150001	—	115/60/1	LM	1.16	0.39	—	—	—	—	—	6.0	6.0
5030V-A	150036	—	115/60/1	LM	1.93	—	0.86	—	—	—	—	6.0	6.0
5040V-A	150038	—	115/60/1	LM	2.22	—	1.23	—	—	0.21	—	7.5	7.5
5060V-A	150040	—	115/60/1	LM	3.11	—	2.04	—	—	0.94	—	9.5	9.5

Specifications

Dimensional drawings and other models available. Please call 1-800-521-2083 for additional information.

Pressure										
MODEL SERIES	AMBIENT TEMPERATURE		ELECTRICAL RATED LOAD			INSUL. CLASS	SPEED (RPM)	THERMAL PROTECTOR	NET WEIGHT (LBS.)	DIMENSIONS (H x W x L)
	MINIMUM	MAXIMUM	RUN (AMPS)	POWER (WATTS)	START (AMPS)					
SMG 4	32° F	122° F	.028	6	—	—	—	NO	.4	1.2 x 1.4 x 2.8
SMG 4	32° F	122° F	.058	6	—	—	—	NO	.4	1.2 x 1.4 x 2.8
SMG 4	32° F	122° F	.28	6	—	—	—	NO	.4	1.2 x 1.4 x 2.8
SMG 4	32° F	122° F	.32	6	—	—	—	NO	.4	1.2 x 1.4 x 2.8

Vacuum										
MODEL SERIES	AMBIENT TEMPERATURE		ELECTRICAL RATED LOAD			INSUL. CLASS	SPEED (RPM)	THERMAL PROTECTOR	NET WEIGHT (LBS.)	DIMENSIONS (H x W x L)
	MINIMUM	MAXIMUM	RUN (AMPS)	POWER (WATTS)	START (AMPS)					
SMG 4	32° F	122° F	.028	6	—	—	—	NO	.4	1.2 x 1.4 x 2.8
SMG 4	32° F	122° F	.058	6	—	—	—	NO	.4	1.2 x 1.4 x 2.8
SMG 4	32° F	122° F	.28	6	—	—	—	NO	.4	1.2 x 1.4 x 2.8
SMG 4	32° F	122° F	.32	6	—	—	—	NO	.4	1.2 x 1.4 x 2.8

Specifications

Pressure										
MODEL SERIES	AMBIENT TEMPERATURE		ELECTRICAL RATED LOAD			INSUL. CLASS	SPEED (RPM)	THERMAL PROTECTOR	NET WEIGHT (LBS.)	DIMENSIONS (H x W x L)
	MINIMUM	MAXIMUM	RUN (AMPS)	POWER (WATTS)	START (AMPS)					
5006	32° F	104° F	.1	6	.1	A	—	YES	5.4	4.38 x 5.04 x 5.83
5015	32° F	104° F	.2	10	.2	A	—	YES	5.5	4.38 x 5.04 x 5.83
5020	32° F	104° F	.3	12	.3	A	—	YES	5.5	4.38 x 5.04 x 5.83
5030-A	32° F	104° F	.7	33	.7	A	—	YES	11.5	7.80 x 6.83 x 8.09
5040-A	32° F	104° F	1.0	44	1.0	A	—	YES	12.0	7.80 x 6.83 x 8.09
5060-A	32° F	104° F	1.5	69	1.5	A	—	YES	13.5	7.80 x 6.83 x 8.09
5078S	32° F	104° F	2.1	78	2.1	A	—	YES	18.5	8.59 x 7.05 x 8.94
5100S	32° F	104° F	2.7	107	2.7	A	—	YES	18.5	8.59 x 7.05 x 8.94
5120S	32° F	104° F	2.8	157	2.8	A	—	YES	18.5	8.59 x 7.05 x 8.94
5150S	32° F	104° F	2.9	168	2.9	A	—	YES	25.5	9.93 x 7.64 x 10.01
5200S	32° F	104° F	4.6	261	4.6	A	—	YES	25.5	9.93 x 7.64 x 10.01
6005SE	32° F	104° F	.12	10	.12	B	—	YES	1.1	3.13 x 2.93 x 3.77
6015SE	32° F	104° F	.23	15	.23	B	—	YES	2.7	3.33 x 4.60 x 5.05
6025SE	32° F	104° F	.46	40	.46	B	—	YES	3.3	3.33 x 4.60 x 5.05
6025SE/12v	32° F	104° F	2.7	—	2.7	B	—	NO	3.3	3.33 x 4.60 x 5.05
6025SE/24v	32° F	104° F	1.5	—	1.5	B	—	NO	3.3	3.33 x 4.60 x 5.05

6005SE



Vacuum										
MODEL SERIES	AMBIENT TEMPERATURE		ELECTRICAL RATED LOAD			INSUL. CLASS	SPEED (RPM)	THERMAL PROTECTOR	NET WEIGHT (LBS.)	DIMENSIONS (H x W x L)
	MINIMUM	MAXIMUM	RUN (AMPS)	POWER (WATTS)	START (AMPS)					
6025SE	32° F	104° F	.46	40	.46	B	—	YES	3.3	3.33 x 4.60 x 5.05
6025SE/12v	32° F	104° F	2.7	—	2.7	B	—	NO	3.3	3.33 x 4.60 x 5.05
6025SE/24v	32° F	104° F	1.5	—	1.5	B	—	NO	3.3	3.33 x 4.60 x 5.05
6015SE	32° F	104° F	.23	15	.23	B	—	YES	2.7	3.33 x 4.60 x 5.05

6015SE/6025SE/6025SE DC



MODEL SERIES	AMBIENT TEMPERATURE		ELECTRICAL RATED LOAD			INSUL. CLASS	SPEED (RPM)	THERMAL PROTECTOR	NET WEIGHT (LBS.)	DIMENSIONS (H x W x L)
	MINIMUM	MAXIMUM	RUN (AMPS)	POWER (WATTS)	START (AMPS)					
5006V	32° F	104° F	—	—	—	B	—	—	5.4	4.38 x 5.04 x 5.83
5015V	32° F	104° F	—	—	—	B	—	—	5.5	4.38 x 5.04 x 5.83
5020V	32° F	104° F	—	—	—	B	—	—	5.5	4.38 x 5.04 x 5.83
5030V-A	32° F	104° F	—	—	—	B	—	—	12.5	7.79 x 6.83 x 8.09
5040V-A	32° F	104° F	—	—	—	B	—	—	13.0	7.79 x 6.83 x 8.09
5060V-A	32° F	104° F	—	—	—	B	—	—	14.5	7.79 x 6.83 x 8.09

Diaphragm Pumps & Compressors

1420



2002 DC



3013 DC



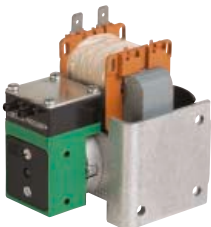
4002



5002 DC



5002 AC



7006Z



Pressure

MODEL SERIES	HP	MOTOR CAPACITY		COMPRESSOR PERFORMANCE (LPM @ PSI)								MAXIMUM PRESSURE (PSI)		
		VOLTAGE	TYPE	0	5	10	20	40	60	80	100	CONTINUOUS	INTERMITTENT	RESTART
1420-0003	—	12	PM	8.1	.49	2.5	—	—	—	—	—	2.9	10.0	2.9
2002-0304	—	4.5	PM	.38	.04	—	—	—	—	—	—	2.0	5.8	2.0
3013-0006	—	12	PM	1.2	.25	—	—	—	—	—	—	2.9	6.5	2.9
3013-0007	—	4.5	PM	.9	.12	—	—	—	—	—	—	2.9	6.5	2.9
3013-0008	—	6	PM	.9	.15	—	—	—	—	—	—	2.9	6.5	2.9
5002-0582	—	115/60	SP	1.7	1.3	1.0	—	—	—	—	—	4.35	17.4	0
5002-0408	—	12	PM	2.0	1.4	1.0	.5	—	—	—	—	4.35	17.4	13
5002-0416	—	24	PM	2.0	1.4	1.0	.5	—	—	—	—	4.35	17.4	13
5002-0397	—	6	PM	2.0	1.4	1.0	—	—	—	—	—	4.35	17.4	13
5002-0010	—	230	SP	1.7	1.3	1.0	—	—	—	—	—	4.35	17.4	0
7006-0065	—	12	PM	7.2	5.9	4.5	3.0	—	—	—	—	11.6	36.0	36
7006-0054*	—	12	PM	13.8	10.2	8.0	5.7	—	—	—	—	11.6	36.0	36
7006-0063	—	115	SP	7.2	5.5	4.7	3.5	—	—	—	—	11.6	36.0	0
7006-0066	—	24	PM	7.2	5.9	4.5	3.0	—	—	—	—	11.6	36.0	36
7006-0055*	—	24	PM	13.8	10.2	8.0	5.7	—	—	—	—	11.6	36.0	36
7006-0051	—	230/50	SP	6.6	5.3	4.5	3.0	—	—	—	—	11.6	36.0	0
7010-2502	—	12	PM	6.5	5.1	3.7	2.0	—	—	—	—	14.5	32.0	14.5
7010-2514	—	24	PM	6.5	5.1	3.7	2.0	—	—	—	—	14.5	32.0	14.5
7010-2167*	—	12	PM	12.0	9.0	6.6	2.9	—	—	—	—	11.6	29.0	0
7010-2133*	—	24	PM	12.0	9.0	6.6	2.9	—	—	—	—	11.6	29.0	0
7011-0008	—	12	PM	12.4	9.1	6.7	3.9	—	—	—	—	11.6	33.3	0
7011-0042	—	24	PM	12.4	9.1	6.7	3.9	—	—	—	—	11.6	33.3	0

*Twin Design

Vacuum

MODEL SERIES	HP	MOTOR CAPACITY		VACUUM PERFORMANCE (LPM @ IN.HG.)						VACUUM (IN.HG.)		
		VOLTAGE	TYPE	0	5	10	15	20	25	MAXIMUM	RESTART	
2002-0304	—	4.5	PM	.38	.15	.04	—	—	—	—	11.8	4.4
3013-0006	—	12	PM	1.2	.5	1.5	—	—	—	—	11.8	5.9
3013-0007	—	4.5	PM	.9	.35	.07	—	—	—	—	11.8	5.9
3013-0008	—	6	PM	.9	.39	.09	—	—	—	—	11.8	5.9
4002-0008	—	7	PM	2.0	1.3	.7	.2	—	—	—	22.5	5.8
5002-0582	—	115/60	SP	1.7	1.0	.5	—	—	—	—	14.7	0
5002-0408	—	12	PM	2.0	1.3	.9	—	—	—	—	14.7	14.7
5002-0416	—	24	PM	2.0	1.3	.9	—	—	—	—	14.7	14.7
5002-0397	—	6	PM	2.0	1.3	.9	—	—	—	—	14.7	14.7
5002-0010	—	230	SP	1.7	1.0	.5	—	—	—	—	14.7	0
7006-0050	—	12	PM	7.2	4.5	3.1	1.8	.07	—	—	25.1	25.1
7006-0054*	—	12	PM	13.8	4.1	5.6	3.5	1.1	.5	—	25.1	25.1
7006-0063	—	115	SP	7.2	5.0	3.3	2.0	.9	—	—	25.1	0
7006-0057*	—	12	PM	6.6	5.1	3.8	2.3	1.2	.5	—	28.1	28.1
7006-0052	—	24	PM	7.2	4.5	3.1	1.8	.7	—	—	25.1	25.1
7006-0055*	—	24	PM	13.8	9.1	5.6	3.5	1.1	.5	—	25.1	25.1

*Twin Design

Specifications

Dimensional drawings and other models available. Please call 1-800-521-2083 for additional information.

Pressure

MODEL SERIES	AMBIENT TEMPERATURE		ELECTRICAL RATED LOAD			INSUL. CLASS	SPEED (RPM)	THERMAL PROTECTOR	NET WEIGHT (LBS.)	DIMENSIONS (H x W x L)
	MINIMUM	MAXIMUM	RUN (AMPS)	POWER (WATTS)	START (AMPS)					
1420-0003	40° F	104° F	.7	8.5	—	F	—	NO	.59	3.01 x 1.19 x 3.44
2002-0304	32° F	122° F	.037	.3	N/A	E	N/A	NO	.04	1.0 x .7 x 1.3
3013-0006	50° F	104° F	.04	—	—	—	N/A	NO	.09	1.3 x .89 x 1.71
3013-0007	50° F	104° F	.09	—	—	E	N/A	NO	.09	1.3 x .89 x 1.71
3013-0008	50° F	104° F	.05	—	—	—	N/A	NO	.09	1.3 x .89 x 1.71
5002-0582	50° F	104° F	.50	23	N/A	E	—	NO	1.3	3.3 x 2.4 x 3.4
5002-0408	50° F	122° F	.34	4	N/A	E	3000	NO	.3	2.1 x 1.2 x 3.1
5002-0416	50° F	122° F	.17	4	N/A	E	3000	NO	.3	2.1 x 1.2 x 3.1
5002-0397	50° F	122° F	.68	—	—	E	3000	NO	.3	2.1 x 1.2 x 3.1
5002-0010	50° F	104° F	.30	—	—	E	2200	NO	1.3	3.3 x 2.4 x 3.4
7006-0065	59° F	104° F	2.3	28	5.4	E	2800	NO	1.3	3.07 x 1.85 x 4.85
7006-0054*	59° F	104° F	3.7	48	8.7	E	2800	NO	2.0	3.07 x 1.85 x 5.99
7006-0063	59° F	104° F	.9	67	1.15	E	3000	NO	2.1	3.07 x 2.40 x 4.85
7006-0066	59° F	104° F	1.15	28	2.7	B	2800	NO	1.3	3.07 x 1.85 x 4.85
7006-0055*	59° F	104° F	2.0	48	4.7	B	2800	NO	2.0	3.07 x 1.85 x 5.99
7006-0051	59° F	104° F	.55	62	0.7	E	2400	NO	2.1	3.07 x 2.4 x 4.85
7010-2502	59° F	104° F	1.04	13	5.9	E	3500	NO	1.3	3.4 x 1.9 x 4.7
7010-2514	59° F	104° F	.52	13	3.4	E	3200	NO	1.3	3.4 x 1.9 x 4.7
7010-2167*	59° F	104° F	1.7	20	4.5	E	3800	NO	1.6	3.4 x 1.9 x 6.3
7010-2133*	59° F	104° F	0.9	20	3.5	E	3900	NO	1.6	3.4 x 1.9 x 6.3
7011-0008	59° F	104° F	1.7	27	4.5	E	3800	NO	2.0	3.4 x 2.4 x 5.7
7011-0042	59° F	104° F	0.9	29	3.5	E	3300	NO	2.0	3.4 x 2.4 x 5.7

7006 DC



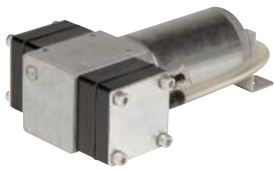
7006 AC



7010 DC



7011 DC



Vacuum

MODEL SERIES	AMBIENT TEMPERATURE		ELECTRICAL RATED LOAD			INSUL. CLASS	SPEED (RPM)	THERMAL PROTECTOR	NET WEIGHT (LBS.)	DIMENSIONS (H x W x L)
	MINIMUM	MAXIMUM	RUN (AMPS)	POWER (WATTS)	START (AMPS)					
2002-0304	32° F	122° F	.037	.3	N/A	E	N/A	NO	.04	1.0 x .7 x 1.3
3013-0006	50° F	104° F	.04	—	—	—	N/A	NO	.09	1.3 x .89 x 1.71
3013-0007	50° F	104° F	.09	—	—	E	N/A	NO	.09	1.3 x .89 x 1.71
3013-0008	50° F	104° F	.05	—	—	—	N/A	NO	.09	1.3 x .89 x 1.71
4002-0008	50° F	104° F	—	8.5	0.7	—	4700	NO	.12	1.19 x .69 x 2.09
5002-0582	50° F	104° F	.50	23	N/A	E	3000	NO	1.3	3.3 x 2.4 x 3.4
5002-0408	50° F	122° F	.34	4	N/A	E	3000	NO	.3	2.1 x 1.2 x 3.1
5002-0019	50° F	122° F	.17	4	N/A	E	3000	NO	.3	2.1 x 1.2 x 3.1
5002-0018	50° F	122° F	.68	—	—	E	3000	NO	.3	2.1 x 1.2 x 3.1
5002-0010	50° F	104° F	.3	—	—	E	3000	NO	1.3	3.3 x 2.4 x 3.4
7006-0065	59° F	104° F	2.3	28	5.4	E	2800	NO	1.3	3.07 x 1.85 x 4.85
7006-0054*	59° F	104° F	3.7	48	8.7	E	2800	NO	2.0	3.07 x 1.85 x 5.99
7006-0063	59° F	104° F	.9	67	1.15	E	3000	NO	2.1	3.07 x 2.40 x 4.85
7006-0057*	59° F	104° F	3.7	48	8.7	B	2800	NO	2.0	3.07 x 1.85 x 5.99
7006-0066	59° F	104° F	1.15	28	2.7	B	2800	NO	1.3	3.07 x 1.85 x 4.85
7006-0055*	59° F	104° F	2.0	48	4.7	B	2800	NO	2.0	3.07 x 1.85 x 5.99

continued →

Diaphragm Pumps & Compressors continued

7011Z DC



Vacuum											
MODEL SERIES	HP	MOTOR CAPACITY		VACUUM PERFORMANCE (LPM @ IN.HG.)						VACUUM (IN.HG.)	
		VOLTAGE	TYPE	0	5	10	15	20	25	MAXIMUM	RESTART
7006-0051	—	230/50	SP	6.6	4.2	3.1	1.0	0.7	—	25.1	0
7010-2502	—	12	PM	6.5	4.1	2.9	1.9	1.1	—	21.5	0
7010-2514	—	24	PM	6.5	4.1	2.9	1.9	1.1	—	21.5	0
7010-2167*	—	12	PM	12.0	8.5	5.6	2.9	0.9	—	22.1	0
7010-2133*	—	24	PM	12.0	8.5	5.6	2.9	0.9	—	22.1	0
7011-0008	—	12	PM	12.4	8.3	5.5	3.0	0.9	—	21.5	0
7011-0042	—	24	PM	12.4	8.3	5.5	3.0	0.9	—	21.5	0
7011-0037*	—	12	PM	7.0	4.7	3.5	2.3	1.6	—	28.6	28.6
7011-0069*	—	24	PM	7.0	4.7	3.5	2.3	1.6	—	28.6	28.6

*Twin Design

008



Diaphragm Pumps & Compressors

Pressure														
MODEL SERIES	HP	MOTOR CAPACITY		COMPRESSOR PERFORMANCE (CFM @ PSI)								MAXIMUM PRESSURE (PSI)		
		VOLTAGE	TYPE	0	5	10	15	20	25	30	35	CONTINUOUS	INTERMITTENT	RESTART
008CDU13	1/30	220/50 -240/50	SP	.54	.44	.33	.24	.18	—	—	—	15	20	0
008CA13	1/30	115/60	SP	.61	.45	.31	.21	.14	—	—	—	15	20	0
007CDC13	1/32	12v	PM	.60	.45	.34	.25	.15	—	—	—	15	20	20
107CCD18	1/20	230/60 -220/50	SP	.55	.43	.34	.24	.17	.13	.08	—	20	30	0
107CGH18	1/20	230/60 -220/50	PSC	.59	.52	.44	.36	.29	.21	.13	—	20	30	0
107CAB18	1/20	115/60 -110/50	SP	.69	.60	.51	.40	.31	.23	.14	—	20	30	0
107CEF18	1/20	115/60 -110/50	PSC	.73	.66	.55	.45	.35	.27	.18	—	30	30	0
107CDC20	1/10	12v	PM	1.40	1.34	1.12	.94	.77	.62	.49	.39	35	35	15
915CD18	1/15	220/50	SP	1.16	1.00	.80	.61	.45	.31	.20	.13	20	35	0
915CA18	1/15	115/60	SP	1.30	1.13	.95	.74	.58	.41	.25	.13	20	35	0
907CDC18	1/10	12v	PM	2.05	1.67	1.30	.93	.72	.53	.35	—	30	30	5
910CDC22	1/6	12v	PM	1.97	1.72	1.47	1.29	1.10	.95	.79	.64	25	40	20
927CD18	1/8	220/50	SP	1.15	1.00	.87	.72	.61	.46	.37	.30	30	40	0
927CA18	1/8	115/60	SP	1.24	1.11	.96	.81	.65	.52	.44	.35	30	40	0
2107CH20	1/20	220/50	PSC	1.40	1.20	1.00	.82	.65	.51	.41	—	20	30	0
2107CD20	1/20	220/50	SP	1.37	1.00	—	—	—	—	—	—	5	5	0
2107CEF20	1/20	115/60 -110/50	PSC	1.65	1.40	1.15	—	—	—	—	—	10	10	0
2107CA20	1/20	115/60	SP	1.65	1.33	—	—	—	—	—	—	5	5	0
2907CDC22	1/6	12v	PM	3.20	2.89	2.53	2.21	—	—	—	—	15	15	15

007DC



107



915/927



Specifications continued

Dimensional drawings and other models available. Please call 1-800-521-2083 for additional information.

Vacuum										
MODEL SERIES	AMBIENT TEMPERATURE		ELECTRICAL RATED LOAD			INSUL. CLASS	SPEED (RPM)	THERMAL PROTECTOR	NET WEIGHT (LBS.)	DIMENSIONS (H x W x L)
	MINIMUM	MAXIMUM	RUN (AMPS)	POWER (WATTS)	START (AMPS)					
7006-0051	59° F	104° F	.55	22	.7	E	2400	NO	2.1	3.07 x 2.4 x 4.85
7010-2502	59° F	104° F	1.04	13	5.9	E	3500	NO	1.3	3.4 x 1.9 x 4.7
7010-2514	59° F	104° F	.52	13	3.4	E	3200	NO	1.3	3.4 x 1.9 x 4.7
7010-2167*	59° F	104° F	1.7	20	4.5	E	3200	NO	1.6	3.4 x 1.9 x 6.3
7010-2133*	59° F	104° F	0.8	20	3.5	E	3900	NO	1.6	3.4 x 1.9 x 6.3
7011-0008	59° F	104° F	1.7	29	4.5	E	3800	NO	2.0	3.4 x 2.4 x 5.7
7011-0042	59° F	104° F	0.9	29	3.5	E	3900	NO	2.0	3.4 x 2.4 x 5.7
7011-0037*	59° F	104° F	2.5	31	11.7	E	3200	NO	3.0	3.8 x 2.3 x 7.6
7011-0069*	59° F	104° F	1.3	31	8.2	E	3200	NO	3.0	3.8 x 2.3 x 7.6

907DC



910DC



Specifications

Pressure										
MODEL SERIES	AMBIENT TEMPERATURE		ELECTRICAL RATED LOAD			INSUL. CLASS	SPEED (RPM)	THERMAL PROTECTOR	NET WEIGHT (LBS.)	DIMENSIONS (H x W x L)
	MINIMUM	MAXIMUM	RUN (AMPS)	POWER (WATTS)	START (AMPS)					
008CDU13	50° F	104° F	.66/1.74	93/109	1.4	B	2600/2752	YES	3.0	5.12 x 3.50 x 6.00
008CA13	50° F	104° F	1.90	144	2.8	B	3112	YES	2.5	5.12 x 3.50 x 6.00
007CDC13	50° F	104° F	2.8	N/A	36	F	2800	NO	2.9	5.09 x 3.37 x 6.25
107CCD18	50° F	104° F	.8/1.0	100/120	1.2	B	1620/1220	YES	5.1	4.69 x 4.25 x 6.83
107CGH18	50° F	104° F	.60/1.62	119/125	.83/1.93	B	1695/1340	YES	6.0	5.80 x 5.27 x 7.45
107CAB18	50° F	104° F	1.69/2.18	107/136	2.77/3.09	B	1630/1260	YES	5.1	4.69 x 4.25 x 6.83
107CEF18	50° F	104° F	1.05/1.48	90/118	2.07/2.17	B	1720/1330	YES	6.0	5.80 x 5.27 x 7.45
107CDC20	50° F	104° F	8.5	N/A	40.0	A	2970	NO	4.5	4.69 x 4.25 x 7.34
915CD18	50° F	104° F	1.20	157	1.74	B	1150	YES	9.0	6.78 x 4.75 x 7.89
915CA18	50° F	104° F	2.40	160	3.5	B	1550	YES	9.0	6.78 x 4.75 x 7.89
907CDC18/12	50° F	104° F	10.8	N/A	40.0	A	2680	NO	6.5	5.88 x 4.75 x 7.84
910CDC22/12	50° F	104° F	12.8	N/A	96.6	B	2160	NO	8.2	5.88 x 4.75 x 9.23
927CD18	50° F	104° F	1.30	171	2.1	B	1250	YES	11.0	6.78 x 4.75 x 7.89
927CA18	50° F	104° F	3.00	191	5.5	B	1625	YES	11.0	6.78 x 4.75 x 7.89
2107CH20	50° F	104° F	.6	125	.8	A	1225	YES	7.0	6.00 x 5.22 x 8.75
2107CD20	50° F	104° F	.8	113	1.3	A	1200	YES	6.0	4.69 x 4.25 x 8.09
2107CEF20	50° F	104° F	1.1/1.2	108/100	1.6/1.9	A	1500/1245	YES	7.0	6.00 x 5.22 x 8.75
2107CA20	50° F	104° F	1.6	123	2.6	B	1524	YES	6.0	4.69 x 4.25 x 8.09
2907CDC22	50° F	104° F	20	N/A	120	B	1900	NO	11.0	5.88 x 4.75 x 12.50

107DC



2107VA



2107



2207



continued →

Diaphragm Pumps & Compressors

2907DC



Vacuum												
MODEL SERIES	HP	MOTOR CAPACITY		VACUUM PERFORMANCE (CFM @ IN.HG.)						VACUUM (IN.HG.)		
		VOLTAGE	TYPE	0	5	10	15	20	25	MAXIMUM	RESTART	
008CDU13	1/30	220/50 -240/50	SP	.54	.39	.12	—	—	—	20.3	0	
008CA13	1/30	115/60	SP	.61	.38	.23	.11	—	—	20.3	0	
007CDC13	1/32	12v	PM	.60	.38	.24	.12	—	—	20.0	20.0	
107CCD18	1/20	230/60 -220/50	SP	.55	.40	.27	.15	—	—	22.0	0	
107CGH18	1/20	230/60 -220/50	PSC	.59	.46	.31	.17	.05	—	22.5	0	
107CAB18	1/20	115/60 -110/50	SP	.69	.54	.36	.20	.05	—	22.1	0	
107CEF18	1/20	115/60 -110/50	PSC	.73	.55	.38	.23	.07	—	22.7	0	
107CDC20	1/10	12v	PM	1.40	1.09	.80	.48	—	—	22.9	22.9	
915CD18	1/15	220/50	SP	1.16	.77	.53	.30	.08	—	22.5	0	
915CA18	1/15	115/60	SP	1.30	.89	.64	.37	.13	—	22.4	0	
907CDC18/12	1/10	12v	PM	2.05	1.25	.82	.48	—	—	22.2	21.9	
910CDC22/12	1/6	12v	PM	1.97	1.53	1.05	.65	.28	—	24.3	24.3	
927CD18	1/8	220/50	SP	1.15	.73	.53	.33	.11	—	23.8	0	
927CA18	1/8	115/60	SP	1.24	.89	.64	.36	.16	—	23.8	0	
2207BE18	1/20	115/60	PSC	2.57	1.88	1.24	.64	.09	—	21.0	0	
2207BHI18	1/20	220/50	PSC	2.05	1.50	.99	.53	.09	—	21.0	0	
2107CH20	1/20	220/50	PSC	1.40	1.00	.71	.42	.17	—	23.9	0	
2107CD20	1/20	220/50	SP	1.37	.96	.64	.38	—	—	23.5	0	
2107CEF20	1/20	115/60 -110/50	PSC	1.65	1.19	.85	.49	.18	—	23.3	0	
2107CA20	1/20	115/60	SP	1.65	1.15	.77	.47	.17	—	23.2	0	
2907CDC22	1/6	12v	PM	3.20	2.00	1.43	.90	.41	—	24.0	24.0	

Rotary Pumps & Compressors

G/01-EB



G/02-EB



G/04-EB



Pressure															
MODEL SERIES	PART NO.	HP	MOTOR CAPACITY		COMPRESSOR PERFORMANCE (LPM @ PSI)								MAXIMUM PRESSURE (PSI)		
			VOLTAGE	TYPE	0	1	1.5	3	5	7.5	10	15	CONTINUOUS	INTERMITTENT	RESTART
G6/01-EB	50081	—	6v	PM	1.0	.5	.1	—	—	—	—	—	1.2	1.7	0
G12/01-EB	50096	—	12v	PM	1.4	.9	.5	—	—	—	—	—	1.5	2.2	0
G12/02-EB	50095	—	12v	PM	3.6	2.2	1.5	—	—	—	—	—	1.5	2.6	0
G6/04-EB	50102	—	6v	PM	4.7	2.1	.5	—	—	—	—	—	.73	1.6	0
G12/04-EB	50097	—	12v	PM	6.2	3.7	2.0	—	—	—	—	—	.73	2.0	0
G24/04-EB	50104	—	24v	PM	6.8	4.2	2.8	—	—	—	—	—	.58	2.2	0
G12/045	50200	—	12v	PM	5.5	5.2	4.5	3.8	2.7	1.2	—	—	2.2	9.4	0
G12/07-N	50316	—	12v	PM	20.0	18.5	17.0	14.5	4.5	—	—	—	3.6	13.0	0

Vacuum													
MODEL SERIES	PART NO.	HP	MOTOR CAPACITY		VACUUM PERFORMANCE (LPM @ IN.HG)						VACUUM (IN.HG)		
			VOLTAGE	TYPE	0	1.5	3	5	10	15	MAXIMUM	RESTART	
G6/01-EB	50081	—	6v	PM	1.0	.6	.2	—	—	—	—	3.5	0
G12/01-EB	50096	—	12v	PM	1.4	1.0	.6	—	—	—	—	4.7	0
G12/02-EB	50095	—	12v	PM	3.6	2.5	1.6	.1	—	—	—	5.3	0
G6/04-EB	50102	—	6v	PM	4.7	3.2	0.9	—	—	—	—	3.5	0
G12/04-EB	50097	—	12v	PM	6.2	4.5	2.2	—	—	—	—	4.4	0
G24/04-EB	50104	—	24v	PM	6.8	5.0	3.0	—	—	—	—	4.7	0
G12/045	50200	—	12v	PM	5.5	4.9	4.2	3.4	1.8	—	—	17.1	0
G12/07-N	50316	—	12v	PM	20.0	13.0	7.0	1.0	—	—	—	20.6	0

Specifications

Dimensional drawings and other models available. Please call 1-800-521-2083 for additional information.

Vacuum										
MODEL SERIES	AMBIENT TEMPERATURE		ELECTRICAL RATED LOAD			INSUL. CLASS	SPEED (RPM)	THERMAL PROTECTOR	NET WEIGHT (LBS.)	DIMENSIONS (H x W x L)
	MINIMUM	MAXIMUM	RUN (AMPS)	POWER (WATTS)	START (AMPS)					
008CDU13	50° F	104° F	.66/74	93/109	1.4	B	2600/2752	YES	3.0	5.12 x 3.50 x 6.00
008CA13	50° F	104° F	1.90	144	2.8	B	3112	YES	2.5	5.12 x 3.50 x 6.00
007CDC13	50° F	104° F	2.8	N/A	36	F	2800	NO	2.9	5.09 x 3.37 x 6.25
107CCD18	50° F	104° F	.8/1.0	100/120	1.2	B	1620/1220	YES	5.1	4.69 x 4.25 x 6.83
107CGH18	50° F	104° F	.60/62	119/125	.83/93	B	1695/1340	YES	6.0	5.80 x 5.27 x 7.45
107CAB18	50° F	104° F	1.69/2.18	107/136	2.77/3.09	B	1630/1260	YES	5.1	4.69 x 4.25 x 6.83
107CEF18	50° F	104° F	1.05/1.48	90/118	2.07/2.17	B	1720/1330	YES	6.0	5.80 x 5.27 x 7.45
107CDC20	50° F	104° F	8.5	N/A	40.0	A	2970	NO	4.5	4.69 x 4.25 x 7.34
915CD18	50° F	104° F	1.20	157	1.74	B	1150	YES	9.0	6.78 x 4.75 x 7.89
915CA18	50° F	104° F	2.40	160	3.5	B	1550	YES	9.0	6.78 x 4.75 x 7.89
907CDC18/12	50° F	104° F	10.8	N/A	40.0	A	2680	NO	6.5	5.88 x 4.75 x 7.84
910CDC22/12	50° F	104° F	12.8	N/A	96.6	B	2160	NO	8.2	5.88 x 4.75 x 9.23
927CD18	50° F	104° F	1.30	171	2.1	B	1250	YES	11.0	6.78 x 4.75 x 7.89
927CA18	50° F	104° F	3.00	191	5.5	B	1625	YES	11.0	6.78 x 4.75 x 7.89
2207BE18	50° F	104° F	1.2	140	1.6	A	1670	YES	11.0	6.21 x 6.18 x 9.75
2207BHI18	50° F	104° F	.7	135	1.0	A	1360	YES	11.0	6.21 x 6.18 x 9.75
2107CH20	50° F	104° F	.6	125	.8	A	1225	YES	7.0	6.00 x 5.22 x 8.75
2107CD20	50° F	104° F	.8	113	1.3	A	1200	YES	6.0	4.69 x 4.25 x 8.09
2107CEF20	50° F	104° F	1.1/1.2	108/100	1.6/1.9	A	1500/1245	YES	7.0	6.00 x 5.22 x 8.75
2107CA20	50° F	104° F	1.6	123	2.6	B	1524	YES	6.0	4.69 x 4.25 x 8.09
2907CDC22	50° F	104° F	20	N/A	120	B	1900	NO	11.0	5.88 x 4.75 x 12.50

Specifications

Pressure										
MODEL SERIES	AMBIENT TEMPERATURE		ELECTRICAL RATED LOAD			INSUL. CLASS	SPEED (RPM)	THERMAL PROTECTOR	NET WEIGHT (LBS.)	DIMENSIONS (H x W x L)
	MINIMUM	MAXIMUM	RUN (AMPS)	POWER (WATTS)	START (AMPS)					
G6/01-EB	-22° F	104° F	.19	.78	N/A	B	5100	NO	.2	.81 x .81 x 2.09
G12/01-EB	-22° F	104° F	.20	1.6	N/A	B	6900	NO	.2	1.14 x 1.14 x 2.84
G12/02-EB	-22° F	104° F	.33	2.6	N/A	B	6900	NO	.02	2.20 x 1.14 x 2.82
G6/04-EB	-22° F	104° F	.48	2.9	N/A	F	—	NO	.02	2.44 x 1.02 x 1.02
G12/04-EB	-22° F	104° F	.47	3.8	N/A	B	4500	NO	.02	2.44 x 1.02 x 1.02
G24/04-EB	-22° F	104° F	.26	6.2	N/A	B	—	NO	.20	2.44 x 1.02 x 1.02
G12/045	32° F	104° F	1.36	15.0	N/A	E	4500	NO	.44	1.65 x 1.65 x 3.37
G12/07-N	14° F	104° F	4.6	2.3	N/A	E	5400	NO	1.1	2 x 2.25 x 4.45

G/045



G/07



Vacuum										
MODEL SERIES	AMBIENT TEMPERATURE		ELECTRICAL RATED LOAD			INSUL. CLASS	SPEED (RPM)	THERMAL PROTECTOR	NET WEIGHT (LBS.)	DIMENSIONS (H x W x L)
	MINIMUM	MAXIMUM	RUN (AMPS)	POWER (WATTS)	START (AMPS)					
G6/01-EB	-22° F	104° F	.19	.78	N/A	B	5100	NO	.2	.81 x .81 x 2.09
G12/01-EB	-22° F	104° F	.20	1.6	N/A	B	6900	NO	.2	1.14 x 1.14 x 2.84
G12/02-EB	-22° F	104° F	.33	2.6	N/A	B	6900	NO	.02	2.20 x 1.14 x 2.82
G6/04-EB	-22° F	104° F	.48	2.9	N/A	F	—	NO	.02	2.44 x 1.02 x 1.02
G12/04-EB	-22° F	104° F	.47	3.8	N/A	B	4500	NO	.02	2.44 x 1.02 x 1.02
G24/04-EB	-22° F	104° F	.26	6.2	N/A	B	—	NO	.20	2.44 x 1.02 x 1.02
G12/045	32° F	104° F	1.36	15.0	N/A	E	4500	NO	.44	1.65 x 1.65 x 3.37
G12/07-N	14° F	104° F	4.6	2.3	N/A	E	5400	NO	1.1	2 x 2.25 x 4.45

Rotary Pumps & Compressors

QR-0030
QR-0050



QR-0080
QR-0100



SR-0015VP



TA-0030P
TA-0040P

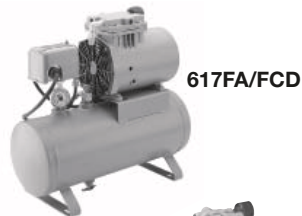


Pressure															
MODEL SERIES	MFG. CODE	HP	MOTOR CAPACITY		COMPRESSOR PERFORMANCE (CFM @ PSI)								MAXIMUM PRESSURE (PSI)		
			VOLTAGE	TYPE	0	5	10	15	20	25	30	35	CONTINUOUS	INTERMITTENT	RESTART
QR-0030	291305	1/3	100-115/200-240/60/50/1	SPh	3.2	2.7	2.2	1.7	—	—	—	—	10	15	0
QR-0050	291306	1/3	100-115/200-240/60/50/1	SPh	4.6	4.1	3.6	3.0	—	—	—	—	10	15	0
QR-0080	291303	3/4	100-115/200-240/60/50/1	CS	8.0	7.35	6.8	6.2	—	—	—	—	10	15	0
QR-0100	291304	3/4	100-115/200-240/60/50/1	CS	10.0	9.4	8.8	—	—	—	—	—	10	10	0
SR-0015-VP	291275	1/10	115/60/50/1	PSC	1.5	1.2	0.95	—	—	—	—	—	10	10	0
SR-0015	291277	1/10	115/60/50/1	SPh	1.5	1.2	0.95	—	—	—	—	—	10	10	0
TA-0030-P	291245	1/4	115/60/50/1	SPh	3.0	2.4	1.8	1.2	—	—	—	—	15	15	0
TA-0040-P	291236	1/3	115/60/50/1	SPh	4.0	3.6	3.2	2.6	—	—	—	—	15	15	0
TA-0075-P	291239	1/2	115/230/60/1	CS	7.2	6.7	6.2	5.7	—	—	—	—	10	15	0
TA-0100-P	291242	3/4	115/230/60/1	CS	10.0	9.5	9.0	—	—	—	—	—	10	10	0
RL-0520-B12	140000	—	12v	BLDC	12.0	—	—	—	—	—	—	—	2	2	0

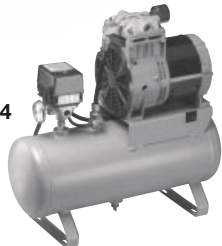
Vacuum													
MODEL SERIES	MFG. CODE	HP	MOTOR CAPACITY		VACUUM PERFORMANCE (CFM @ IN.HG)						VACUUM (IN.HG)		
			VOLTAGE	TYPE	0	5	10	15	20	25	MAXIMUM	RESTART	
QR-0030	291305	1/3	115/60/1	SPh	3.2	2.5	1.9	1.3	.6	—	—	25.0	0
QR-0050	291306	1/3	115/60/1	SPh	4.6	3.8	2.9	2.0	1.2	.3	—	26.0	0
QR-0080	291303	3/4	115/60/1	CS	8.0	6.4	4.8	3.4	2.0	.4	—	26.0	0
QR-0100	291304	3/4	115/60/1	CS	10.0	8.1	6.2	4.4	2.5	.8	—	26.0	0
SR-0015-VP	291275	1/10	115/60/50/1	PSC	1.5	1.1	.8	.5	.2	—	—	24.0	0
SR-0015-VP	291277	1/10	115/60/50/1	SPh	1.5	1.1	.8	.5	.2	—	—	24.0	0
TA-0030-V	291244	1/6	115/60/50/1	SPh	3.0	2.35	1.7	1.1	.45	—	—	24.0	0
TA-0040-V	291246	1/4	115/60/50/1	SPh	4.0	3.23	2.46	1.69	.92	.15	—	26.0	0
TA-0075-V	291238	1/2	115/230/60/1	CS	7.2	5.9	4.4	3.1	1.7	.3	—	26.0	0
TA-0100-V	291241	3/4	115/230/60/1	CS	10.0	8.1	6.2	4.3	2.4	.4	—	26.0	0
RL-0520-B12	140000	—	12v	BLDC	—	—	—	—	—	—	—	4.0	0

Tank Mounted Pumps & Compressors

405FDC



688FE44



Pressure															
MODEL SERIES	MFG. CODE	HP	MOTOR CAPACITY		COMPRESSOR PERFORMANCE (CFM @ PSI)								MAXIMUM PRESSURE (PSI)		
			VOLTAGE	TYPE	0	5	10	20	40	60	80	100	CONTINUOUS	INTERMITTENT	RESTART
405FDC38/12	—	1/10	12VDC	PM	.92	—	.71	.61	.53	.44	.35	.27	100	100	100
617FA22	—	1/8	115/60	SP	.84	—	.74	.64	.46	.31	.20	.10	100	100	100
617FCD22	—	1/8	115/60	SP	.78	—	.70	.61	.46	.33	.24	.12	100	100	100
688FE44	—	1/3	115/60/1	PSC	1.60	—	1.48	1.37	1.21	1.05	.91	.76	100	100	100
LGH-106-H02	160205	1/12	115/60/50/1	SPh	1.2	1.15	1.1	0.9	0.5	0.27	—	—	100	100	100
LGH-210-H02	160493	1/6	115/60/50/1	SPh	1.25	1.21	1.17	0.95	0.73	0.6	0.45	0.35	100	100	100
LGH-310-H02	260484	1/4	115/230/60/1	CS	1.6	1.5	1.4	1.25	1.05	0.85	0.7	0.6	100	100	100
GH-510B-H10	160688	1/2	115/230/60/1	CS	3.2	3.05	2.9	2.68	2.4	2.1	1.9	1.65	100	100	100
GH-610B-H10	160689	3/4	115/230/60/1	CS	4.3	4.15	4.0	3.75	3.3	2.95	2.6	2.4	100	100	100
CMD-75	270023	3/4	115/230/60/1	CS	4.3	4.15	4.0	3.75	3.3	2.95	2.6	2.4	100	100	100
CMD-50	270022	1/2	115/230/60/1	CS	3.2	3.05	2.9	2.68	2.4	2.1	1.9	1.65	100	100	100

Specifications

Dimensional drawings and other models available. Please call 1-800-521-2083 for additional information.

Pressure										
MODEL SERIES	AMBIENT TEMPERATURE		ELECTRICAL RATED LOAD			INSUL. CLASS	SPEED (RPM)	THERMAL PROTECTOR	NET WEIGHT (LBS.)	DIMENSIONS (H x W x L)
	MINIMUM	MAXIMUM	RUN (AMPS)	POWER (WATTS)	START (AMPS)					
QR-0030	32° F	104° F	5.6/2.7	300/250	26.0/13.0	B	1725/1425	YES	33.0	5.80 x 5.63 x 13.56
QR-0050	32° F	104° F	5.6/2.7	360/315	26.0/13.0	B	1725/1425	YES	33.0	5.80 x 5.63 x 13.56
QR-0080	32° F	104° F	10.4/5.5	790/640	37.0/17.0	B	1725/1425	YES	54.0	8.37 x 6.50 x 16.41
QR-0100	32° F	104° F	10.4/5.5	900/760	37.0/17.0	B	1725/1425	YES	54.0	8.37 x 6.50 x 16.41
SR-0015-VP	32° F	104° F	1.6	120	5.0	B	3500	YES	8.0	4.94 x 3.86 x 8.27
SR-0015	32° F	104° F	1.6	120	13.5	B	3500	YES	8.5	4.94 x 3.86 x 8.27
TA-0030-P	32° F	104° F	4.8	370	25.0	B	1725	YES	20.0	8.75 x 5.76 x 10.96
TA-0040-P	32° F	104° F	5.6	460	27.0	B	1710	YES	28.0	8.75 x 5.70 x 11.42
TA-0075-P	32° F	104° F	8.6	700	35.0	B	1720	YES	42.0	8.37 x 6.50 x 13.45
TA-0100-P	32° F	104° F	10.0	950	32.0	B	1720	YES	45.0	8.75 x 6.50 x 13.70
RL-0520-B12	32° F	104° F	2.5	30	—	A	4500	NO	1.75	1.75 x 2.47 x 5.12

TA-0030V
TA-0040V



TA-0075P
TA-0100P



Vacuum										
MODEL SERIES	AMBIENT TEMPERATURE		ELECTRICAL RATED LOAD			INSUL. CLASS	SPEED (RPM)	THERMAL PROTECTOR	NET WEIGHT (LBS.)	DIMENSIONS (H x W x L)
	MINIMUM	MAXIMUM	RUN (AMPS)	POWER (WATTS)	START (AMPS)					
QR-0030	32° F	104° F	5.6/2.7	300/250	26.0/13.0	B	1725/1425	YES	33.0	5.80 x 5.63 x 13.56
QR-0050	32° F	104° F	5.6/2.7	360/315	26.0/13.0	B	1725/1425	YES	33.0	5.80 x 5.63 x 13.56
QR-0080	32° F	104° F	10.4/5.5	790/640	37.0/17.0	B	1725/1425	YES	54.0	8.37 x 6.50 x 16.41
QR-0100	32° F	104° F	10.4/5.5	900/760	37.0/17.0	B	1725/1425	YES	54.0	8.37 x 6.50 x 16.41
SR-0015-VP	32° F	104° F	1.6	120	5.0	B	3500	YES	8.0	4.94 x 3.86 x 8.27
SR-0015-VP	32° F	104° F	1.6	120	13.5	B	3500	YES	8.5	4.94 x 3.86 x 8.27
TA-0030-V	32° F	104° F	4.5	395	21.4	B	1725	YES	20.0	7.10 x 6.37 x 14.35
TA-0040-V	32° F	104° F	4.8	330	25.5	B	1710	YES	27.0	7.09 x 6.37 x 14.35
TA-0075-V	32° F	104° F	8.0	670	35.0	B	1725	YES	44.0	8.37 x 6.75 x 13.69
TA-0100-V	32° F	104° F	8.9	850	37.0	B	1720	YES	47.0	8.75 x 6.75 x 13.94
RL-0520-B12	32° F	104° F	2.5	30	—	A	4500	NO	1.75	1.75 x 2.47 x 5.12

TA-0075V
TA-0100V



Specifications

LGH-106-H02
LGH-210-H02

Pressure										
MODEL SERIES	AMBIENT TEMPERATURE		ELECTRICAL RATED LOAD			INSUL. CLASS	SPEED (RPM)	THERMAL PROTECTOR	NET WEIGHT (LBS.)	DIMENSIONS (H x W x L)
	MINIMUM	MAXIMUM	RUN (AMPS)	POWER (WATTS)	START (AMPS)					
405FDC38/12	50° F	104° F	10.5	—	25	A	3310	YES	18.3	13.39 x 7.00 x 16.50
617FA22	50° F	104° F	3.1	189	5.3	A	1540	YES	25	14.86 x 7.00 x 16.50
617FCD22	50° F	104° F	1.3	174	2.1	A	1105	YES	25	14.86 x 7.00 x 16.50
688FE44	50° F	104° F	3.6	325	9.2	B	1650	YES	28.5	15.51 x 7.00 x 16.50
LGH-106-H02	32° F	104° F	2.1/2.6	150/200	7.8/8.4	A	1725	YES	39	15.86 x 8.44 x 19
LGH-210-H02	32° F	104° F	3.3/4/1	225/260	23/23.8	A	1725	YES	42	15.86 x 8.44 x 19
LGH-310-H02	32° F	104° F	5/2.5	400	20.1/10.3	B	1725	YES	43	15.86 x 8.44 x 19
GH-510B-H10	32° F	104° F	7.3/3.6	760	37/19.7	B	1725	YES	105	19.44 x 12.4 x 30
GH-610B-H10	32° F	104° F	10.6/5/3	825	60/30	B	1725	YES	105	19.44 x 12.4 x 30
CMD-75	32° F	104° F	10.6/5/3	825	60/30	B	1725	YES	74	17.25 x 16 x 16
CMD-50	32° F	104° F	7.3/3.6	760	37/19.7	B	1725	YES	72	17.25 x 16 x 16

GH-510B-H10
GH-610B-H10



CMD-50
CMD-75

Liquid Pumps

SMF 4



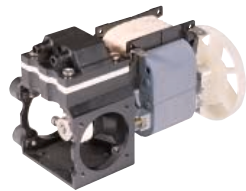
FLG 12/02



FLG 12/01



FP210AC



F120G



SR15



SR25



Diaphragm Pump

MODEL SERIES	ARTICLE NO.	MOTOR CAPACITY		OPEN FLOW	PRESSURE HEIGHT	SUCTION HEIGHT	CONTINUOUS OPERATION	DIMENSIONS (H x W x L)
		VOLTAGE	TYPE					
5002F	5002-1402	12	DC	400 ml/min	15 m H ₂ O	6.0 m H ₂ O	YES	1.99 x 1.18 x 3.19
5002F	5002-1408	12	DC	400 ml/min	15 m H ₂ O	6.0 m H ₂ O	YES	1.99 x 1.18 x 3.19
5002FZ	5002-1079	12	DC	850 ml/min	15 m H ₂ O	5.0 m H ₂ O	YES	1.99 x 1.18 x 4.88
F120G	7120-0017	12	DC	900 ml/min	> 50 m H ₂ O	4.0 m H ₂ O	YES	3.31 x 2.36 x 2.20
FP210	7210-0154	115/60/1	AC	900 ml/min	30 m H ₂ O	1.5 m H ₂ O	YES	5.63 x 4.29 x 4.69

Linear Diaphragm Pump

MODEL SERIES	ARTICLE NO.	MOTOR CAPACITY		OPEN FLOW	PRESSURE HEIGHT	SUCTION HEIGHT	CONTINUOUS OPERATION	DIMENSIONS (H x W x L)
		VOLTAGE	TYPE					
SMF 4	9140110	230/50/1	AC	.27 l/min	8.0 m H ₂ O	2.0 m H ₂ O	YES	1.59 x 1.38 x 2.84
SMF 4	9141110	115/60/1	AC	.27 l/min	8.0 m H ₂ O	2.0 m H ₂ O	YES	1.59 x 1.38 x 2.84
SMF 4	9145110	24	DC	.26 l/min	8.0 m H ₂ O	2.0 m H ₂ O	YES	1.59 x 1.38 x 2.84
SMF 4	9146110	12	DC	.24 l/min	8.0 m H ₂ O	2.0 m H ₂ O	YES	1.59 x 1.38 x 2.84

Rotary Vane Pump

MODEL SERIES	ARTICLE NO.	MOTOR CAPACITY		OPEN FLOW	PRESSURE HEIGHT	SUCTION HEIGHT	CONTINUOUS OPERATION	DIMENSIONS (H x W x L)
		VOLTAGE	TYPE					
FLG 12/02	52020	12	DC	2.5 l/min	—	390° H ₂ O	YES	2.00 x 1.97 x 5.90
FLG 12/01-LC	52110	12	DC	1.3 l/min	—	236° H ₂ O	YES	1.2 x 1.2 x 3.00

Peristaltic Pump

MODEL SERIES	ARTICLE NO.	MOTOR CAPACITY		OPEN FLOW	PRESSURE HEIGHT	SUCTION HEIGHT	CONTINUOUS OPERATION	DIMENSIONS (H x W x L)
		VOLTAGE	TYPE					
SR15	2015-0232	115/60/1	AC	11 ml.min	397.70° H ₂ O	397.70° H ₂ O	NO	3.51 x 2.68 x 2.48
SR15	2015-0324	115/60/1	AC	23 ml.min	397.70° H ₂ O	397.70° H ₂ O	NO	3.51 x 2.68 x 2.48
SR25	2025-0130	24	DC	264 ml/min	397.70° H ₂ O	397.70° H ₂ O	NO	3.98 x 3.15 x 5.32
SR25	2025-1255	24	DC	25 ml/min	397.70° H ₂ O	397.70° H ₂ O	NO	3.98 x 3.15 x 5.32
SR25	2025-1413	24	DC	118 ml/min	397.70° H ₂ O	397.70° H ₂ O	NO	3.98 x 3.15 x 5.32
SR30	2030-0319	12	DC	55 ml/min	314.96° H ₂ O	314.96° H ₂ O	NO	3.19 x 2.20 x 2.68
SR30	2030-0348	24	DC	55 ml/min	314.96° H ₂ O	314.96° H ₂ O	NO	3.19 x 2.20 x 2.68
SR50	2050-0503	12	DC	220 ml/min	314.96° H ₂ O	314.96° H ₂ O	NO	2.24 x 2.13 x 3.31
SR50	2050-0507	24	DC	220 ml/min	314.96° H ₂ O	314.96° H ₂ O	NO	2.24 x 2.13 x 3.31
SR100	2100-1006	12	DC	1.3 l/min	314.96° H ₂ O	314.96° H ₂ O	NO	4.43 x 4.17 x 5.63

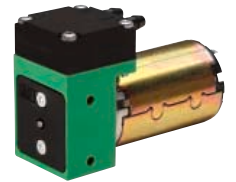
Specifications

Diaphragm Pump

MODEL SERIES	AMBIENT TEMPERATURE			ELECTRICAL RATED LOAD			INSUL. CLASS	SPEED (RPM)	NET WEIGHT (kg)
	MINIMUM	MAXIMUM	MEDIUM	RUN (AMPS)	POWER (WATTS)	START (AMPS)			
5002F	0° C	40° C	40° C - 70° C	0.4	5	1.7	E	3000	0.19
5002F	0° C	40° C	40° C - 70° C	0.58	7	1.7	E	3000	0.19
5002FZ	0° C	40° C	40° C - 70° C	0.4	9	1.8	E	3000	0.19
F120G	0° C	40° C	40° C - 70° C	2.0	24	5.4	E	3000	0.7
FP210	0° C	40° C	40° C - 70° C	0.9	68	1.05	E	3100	0.7

Dimensional drawings and other models available. Please call 1-800-521-2083 for additional information.

5002F



Linear Diaphragm Pump

MODEL SERIES	AMBIENT TEMPERATURE			ELECTRICAL RATED LOAD			INSUL. CLASS	SPEED (RPM)	NET WEIGHT (lbs.)
	MINIMUM	MAXIMUM		RUN (AMPS)	POWER (WATTS)	START (AMPS)			
SMF 4	0° C	60° C	—	28 mA	6	—	IP20	—	0.18
SMF 4	0° C	60° C	—	58 mA	6	—	IP20	—	0.18
SMF 4	0° C	60° C	—	320 mA	6	—	IP20	—	0.18
SMF 4	0° C	60° C	—	180mA	6	—	IP20	—	0.18

5002FZ



Rotary Vane Pump

MODEL SERIES	AMBIENT TEMPERATURE			ELECTRICAL RATED LOAD			INSUL. CLASS	SPEED (RPM)	NET WEIGHT (lbs.)
	MINIMUM	MAXIMUM		RUN (AMPS)	POWER (WATTS)	START (AMPS)			
FLG 12/02	-30° C	70° C	—	1.5	—	—		—	2.2 lbs.
FLG 12/01-LC	-5° C	70° C	—	1.1	—	—	E	—	3.2 oz.

SR10/30



Peristaltic Pump

MODEL SERIES	AMBIENT TEMPERATURE			ELECTRICAL RATED LOAD			INSUL. CLASS	SPEED (RPM)	NET WEIGHT (lbs.)
	MINIMUM	MAXIMUM		RUN (AMPS)	POWER (WATTS)	START (AMPS)			
SR15	0° C	40° C	—	—	4.5	—	A	10	0.28
SR15	0° C	40° C	—	—	4.5	—	A	20	0.28
SR25	0° C	40° C	—	—	7.0	—	—	170	0.6
SR25	0° C	40° C	—	—	—	—	—	30	0.6
SR25	0° C	40° C	—	—	2.0	—	—	65	0.6
SR30	0° C	40° C	—	.18 - 0.3	—	—	—	3000	0.16
SR30	0° C	40° C	—	.09 - .15	—	—	—	3000	0.16
SR50	0° C	40° C	—	0.4 - .54	—	—	—	3000	0.2
SR50	0° C	40° C	—	0.2 - .27	—	—	—	3000	0.2
SR100	0° C	40° C	—	3.0	—	—	—	3000	0.95

SR10/50



SR10/100



motralec

4 rue Lavoisier . ZA Lavoisier . 95223 HERBLAY CEDEX

Tel. : 01.39.97.65.10 / Fax. : 01.39.97.68.48

Demande de prix / e-mail : service-commercial@motralec.com

www.motralec.com