

TOE-MA Series
Heat transfer pumps
for heat transfer oils up to 330 °C

With magnetic coupling in close coupled version
Hydraulic power ratings and casing dimensions
in acc. with EN 733

Volute casing PN 16
Bearing bracket 360

motralec

4 rue Lavoisier . ZA Lavoisier . 95223 HERBLAY CEDEX
Tel. : 01.39.97.65.10 / Fax. : 01.39.97.68.48
Demande de prix par e-mail : service-commercial@motralec.com
www.motralec.com

TOE-MA

Heat transfer pumps with magnetic coupling in close coupled version

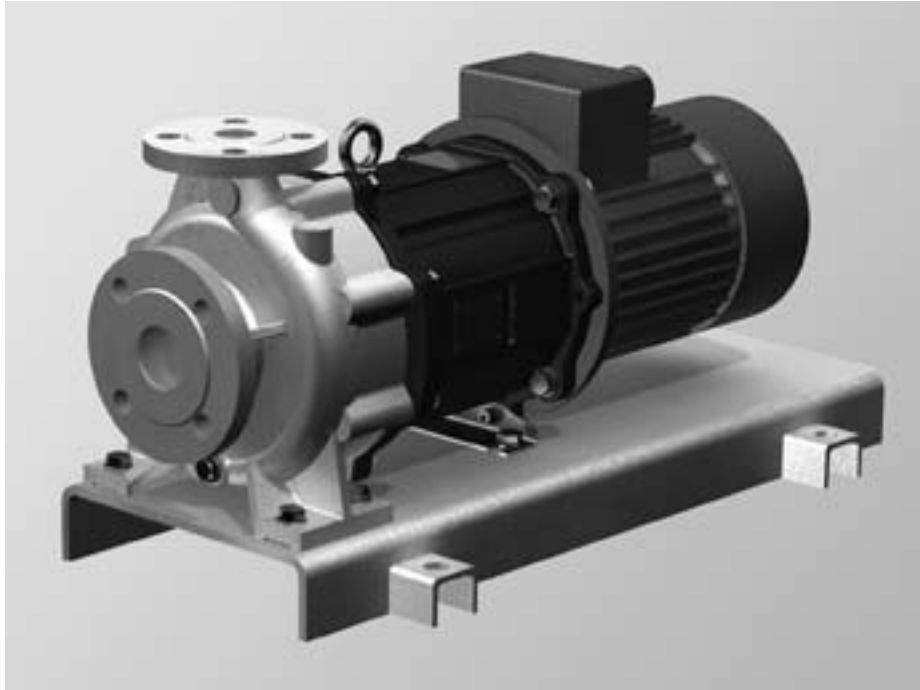
TOE-MA Series

Heat transfer pumps for heat transfer oils up to 330 °C

With magnetic coupling in close coupled version

Hydraulic power ratings and casing dimensions in acc. with EN 733

Volute casing PN 16, bearing bracket 360



Index

Usage	2
Main applications	2
Operating data	3
Denomination	3
Design details	4
Accessories	5
Tests	5
Painting	5
Performance curves 50 Hz	6
Performance curves 60 Hz	7
Pump dimensions	8
Cross-sectional drawings.....	10
Interchangeability of pump parts	11
Dimensional drawings	12
Allocation of coupling and base plate	20
Pump data sheet	21
Substance data of heat transfer media	22

Usage

Pumps of the TOE-MA series are designed for the transportation and recirculation of organic liquids on mineral oil or synthetic basis in heat transfer plants in acc. with DIN 4754. Special versions for eutectic mixtures upon request.

They are suitable for clean media to be pumped which do not chemically attack the pump materials used.

Main applications

The pumps are mainly used in the following industrial sectors:

- Tempering in the plastics and die cast industry
- Baking ovens, large frying units as well as in the production of edible oil and dry mass for the food and feedstuff industries
- Heating of calenders and melting pots in the leather and rubber industry
- Heating of agitators and mixing tanks for the processing of colours, paints and lacquers
- Heating of tanks on stationary and FPSE platforms as well as in tank vessels
- Heating of press lines in the wood and pulp industry
- Flat glass production
- Solar power stations & ORC processes

Operating data

- Flow rate up to approx. 200 m³/h
- Total heads up to approx. 100 m
- Max. operating temperatures up to +330 °C
(Special versions for eutectic mixtures up to + 400 °C upon request.)

Standard conditions at site

- Relative humidity during continuous operation max. 55%
- Ambient temperature up to + 40 °C
- Permissible altitude up to 1000 m above sea level

Deviations from the site conditions specified herein must already be disclosed in the inquiry.

Flow rate

The permissible operating range of centrifugal pumps depends on diverse factors such as

- impeller shape
- speed
- type of liquid
- viscosity
- bearing load
- heat dissipation - particularly with regard to insulated volute casings
- clearance between the net positive suction head of the plant and the pump
- size of magnet coupling

The hydraulic operating range applicable to the TOE-MA series is indicated in the individual performance curves and the pump data sheet.

Pump outlet pressure

The pump outlet pressure at the outlet nozzle depends on

- the pump inlet pressure
- the maximum total head of the selected impeller diameter
- the density of the medium to be pumped

The maximum pump outlet pressure $p_{2max\ op}$ is calculated using the formula:

$$p_{2max\ op} = p_{1max\ op} + \rho \cdot g \cdot H \cdot 10^{-5}$$

With:

$p_{2max\ op}$ = maximum pump outlet pressure [bar]

$p_{1max\ op}$ = maximum pump inlet pressure [bar]

ρ = density of the medium to be pumped [kg/m³]

g = gravitation constant [m/s²]

H = maximum total head at zero flow or at the peak of the pump's characteristic curve at the selected impeller diameter [m]

Pumps must be selected and operated in a way which ensures that the maximum pump outlet pressure does by no means exceed the maximum permissible operating pressure of the casing $p_{all\ w\ c}$ at operating temperature.

This also applies to commissioning while the discharge valve is closed (refer to Fig. 1).

Pressure and temperature limitations

The maximum casing operating pressure $p_{all\ w\ c}$ of the volute casing and the casing cover depends on the operating temperature:



Fig. 1: Maximum permissible casing operating pressure $p_{all\ w\ c}$

Speeds

The operating speed of the pump shaft must not exceed the maximum permissible peripheral speed of the impeller, which corresponds to 48 m/s.

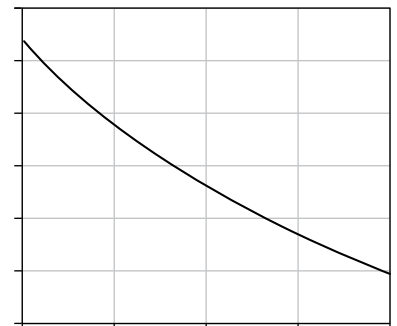
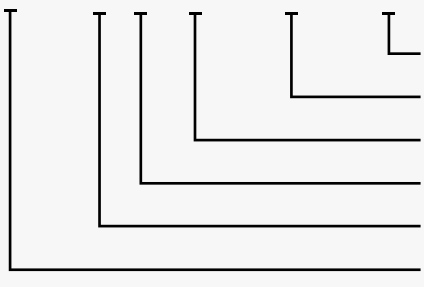


Fig. 2: Maximum permissible shaft speed

Denomination

The denomination of a centrifugal pump of the TOE-MA series with bearing bracket is illustrated in the following example:

TOE - M A 32 - 160 / 150	
	Actual impeller diameter in mm
	Nominal impeller diameter in mm
	Nominal width of outlet nozzle
	Casing dimensions EN 733
	Magnetic coupling
	Denomination of series

TOE-MA

Heat transfer pumps with magnetic coupling in close coupled version

Design details

Pumps of the TOE-MA series are magnetically-coupled horizontal, single-stage, single-entry centrifugal pumps with volute casing, foot-mounted, axial inlet and radial outlet in process design (disassembly of the plug-in unit while the volute casing remains in the conduit).

The hydraulic power ratings and all dimensions are in accordance with EN 733, 1995 issue.

The tolerances of the mating dimensions are subject to the EN 735 standard.

Allocation of components

Pumps of this series are part of a modular system, whose components can also be used for other pump series.

The complete plug-in unit including the impeller is used in the following series:

TOE-MN - base plate pumps with volute casing featuring axial inlet

TOE-MA - close coupled pumps with volute casing featuring axial inlet

TOE-MI - close coupled pumps with volute casing in inline design

For the parts allocation, refer to page 11.

Materials

•		
••	•	
• •		
•	•	
	- •• €	
, f		
€	• • "	
	- " €	•- ... †

EN-GJS-400-15 = EN-JS1030 = GGG-40
 EN-GJS-400-18LT = EN-JS-1025 = GGG-40.3
 EN-GJL-250 = EN-JL1040 = GG-25

Tab. 1: Materials

Volute casing

The nominal pressure of the volute casing is PN 16.

The outlet and inlet nozzles are fitted with bosses to allow for the subsequent connection of pressure gauges. These ports are only drilled upon request of the customer.

The volute casings are self-venting and provided with a plugged drain (G 3/8) as a standard.

Nozzle positions and flanges

• ††	^
‰ ††	
Š	œ •• • Ž

Tab. 2 : Nozzle positions

Plain bearing bracket

The plain bearing bracket consists of the casing cover, the plain bearing cartridge, the internal rotor and the separating can.

The casing cover accommodates the plain bearing cartridge and the separating can. Depending on the torque to be transferred, the design of the casing cover allows for the use of different magnetic coupling sizes.

, f

The plain bearing cartridge carries the internal rotor and consists of the plain bearing casing, the bearing bushings and the bearing sleeves, which support the radial load and the remaining axial thrust.

The internal rotor consists of the impeller, the shaft and the internal magnetic rotor. Most of the axial forces generated during operation are hydraulically compensated by the impeller.

Via a flow control system, the internal magnetic rotor is continuously cooled with the medium to be pumped to dissipate the heat additionally generated during operation by eddy current, viscosity and bearing friction loss. This way, light ends are prevented from accumulating in the area of the magnetic drive and the plain bearings.

The internal rotor is equipped with a start-up safety device, preventing the separating can from being internally destructed by the rotor in case of a plain bearing failure.

Together with the casing cover and the volute casing, the separating can hermetically seals the part of the pump which is in contact with the media to be pumped.

Plug-in unit

= plain bearing bracket + impeller
 The plain bearing bracket and the volute casing form the pump part which is in direct contact with the medium.

External rotor

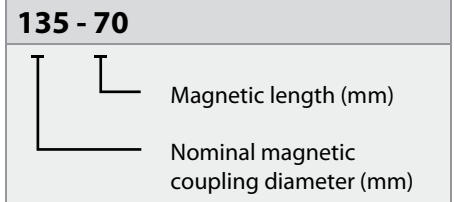
The external rotor consists of the shaft and the external magnetic rotor. It transfers the torque exerted by the drive via the magnetic coupling to the internal rotor.

The external rotor is equipped with a start-up safety device, preventing the separating can from being externally destructed by the rotor in case of a ball bearing.

Magnetic coupling

The magnetic coupling consists of the following components:
 internal magnetic rotor, separating can and external magnetic rotor. Four different coupling sizes with different magnetic lengths are available.
 The transferable torques range between 10 and 500 Nm at ambient temperature.

Designation example of a magnetic coupling:



Allocation of the magnetic coupling sizes to be used for the different pump sizes:

Sizes	Nominal impeller diameter in mm		
	160	200	250
	possible magnetic coupling sizes		
'	"	"	"
	"	"	"
	"	"	"
...	"	"	"
	"	"	"

Each magnetic coupling is sized individually by means of an EDP sizing program.

Bracket

In its function as variant carrier of the different pump types TOE-MN, TOE-MA and TOE-MI, the bracket accommodates on one side the inner part and, on the other side, the outer part of the pump. The bracket is provided with radial cooling slots, which support the heat dissipation in the area of the magnetic coupling.

Utility connections

For the exact positions and dimensions of the utility connections, refer to the dimensional drawings of the pump on pages 8 and 9.

Accessories

Separating can temperature monitoring

The bracket features threaded connections for the installation of a temperature sensor (PT 100) in case the separating can's surface temperature is to be monitored. The temperature sensor can be supplied with the pump. Non-required threaded connections are closed by a screw plug.

Load monitor

A load monitor with start-up override and release delay can be optionally supplied to monitor the pump for underload and overload or as dry running protection.

This load monitor allows for the monitoring of the power factor ($\cos \varphi$) or the active power of the motor and, hence, of the pump aggregate's operating state.

Base plate

Torsion-resistant C profiles with dimensions following the recommendations of DIN 24259.

Drives

Surface-cooled three-phase asynchronous motors for low voltages with cage rotor

- design IM B5 and B35
- degree of protection IP 54
- insulation class F
- power ratings and dimensions in acc. with DIN 42673 / IEC 72
- make according to our choice

Other motor versions are available upon request.

If the motors are provided by the customer, a sufficient cooling power of the motor fan must be ensured (> 3 m/s flow rate measured at the motor's bearing shield at the pump side).

Tests

If required, test certificates in acc. with DIN 55350-18 can be provided for the individual tests, which, however, has to be indicated in the order.

Material tests in acc. with EN 10204

The exact scope of the tests (which test for which parts) as well as the type of certificate (certificate of compliance with the order, factory certificate, inspection certificate) must be specified in the order.

Non-specific material tests do not have any impact on the delivery time of the pump. If specific material tests are required, the delivery time of the pump depends on the availability of raw materials and will be checked on a case-to-case basis. Test certificates for specific material tests cannot be provided after the raw materials and/or semi-finished goods have been negotiated.

Gas pressure tests

All pressure bearing parts, e.g.

- volute casing
- casing cover

are subject to a gas pressure test (leakage test)

The gas pressure test is carried out by applying forming gas at 2 bar. The holding time is 15 minutes. By means of this test, the tightness of the parts is proven.

Hydrostatic pressure test

All pressure bearing parts are subject to a pressure test, during which the hydrostatic test pressure (p_{test}) corresponds to 1.3 times the basic design pressure (p_N) at 20° C, following the recommendations of prEN 12162. The holding time is 10 minutes.

If pressure tests are to be carried out in acc. with other criteria, such criteria must be indicated in the inquiry.

By means of this test, the strength of the parts is proven.

Hydraulic tests (performance curves)

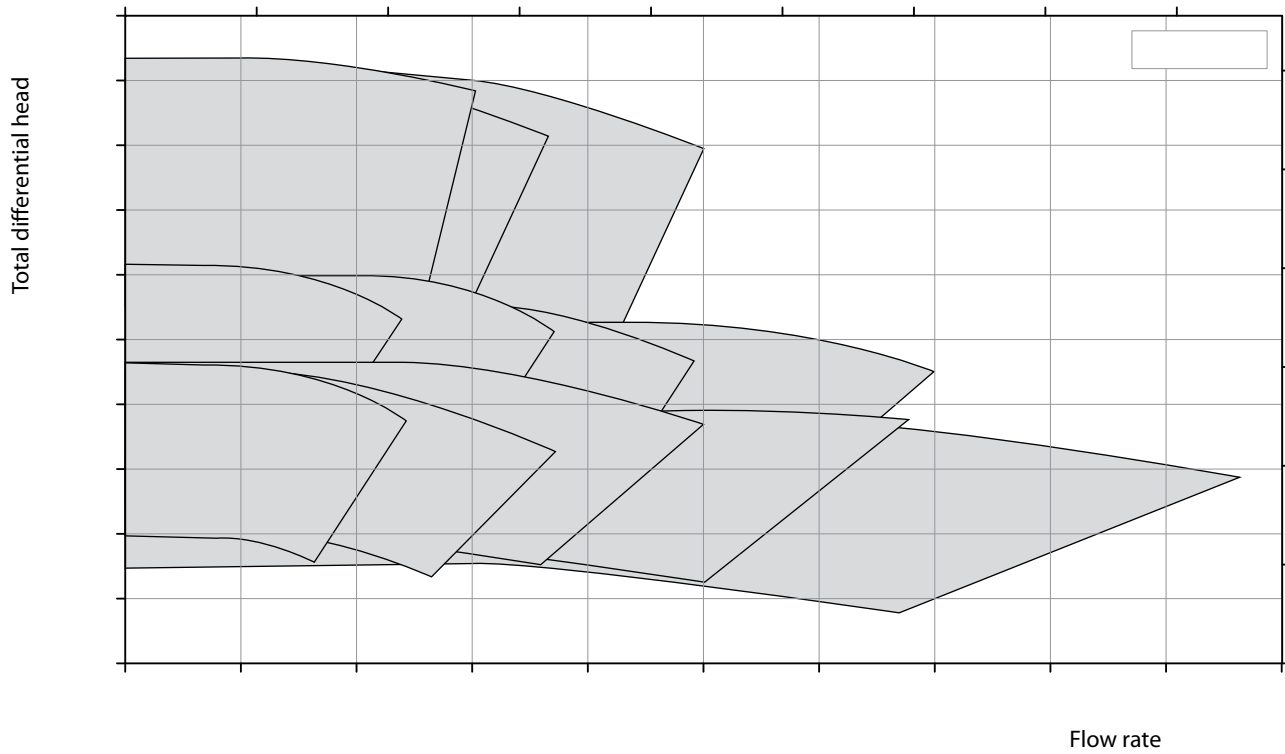
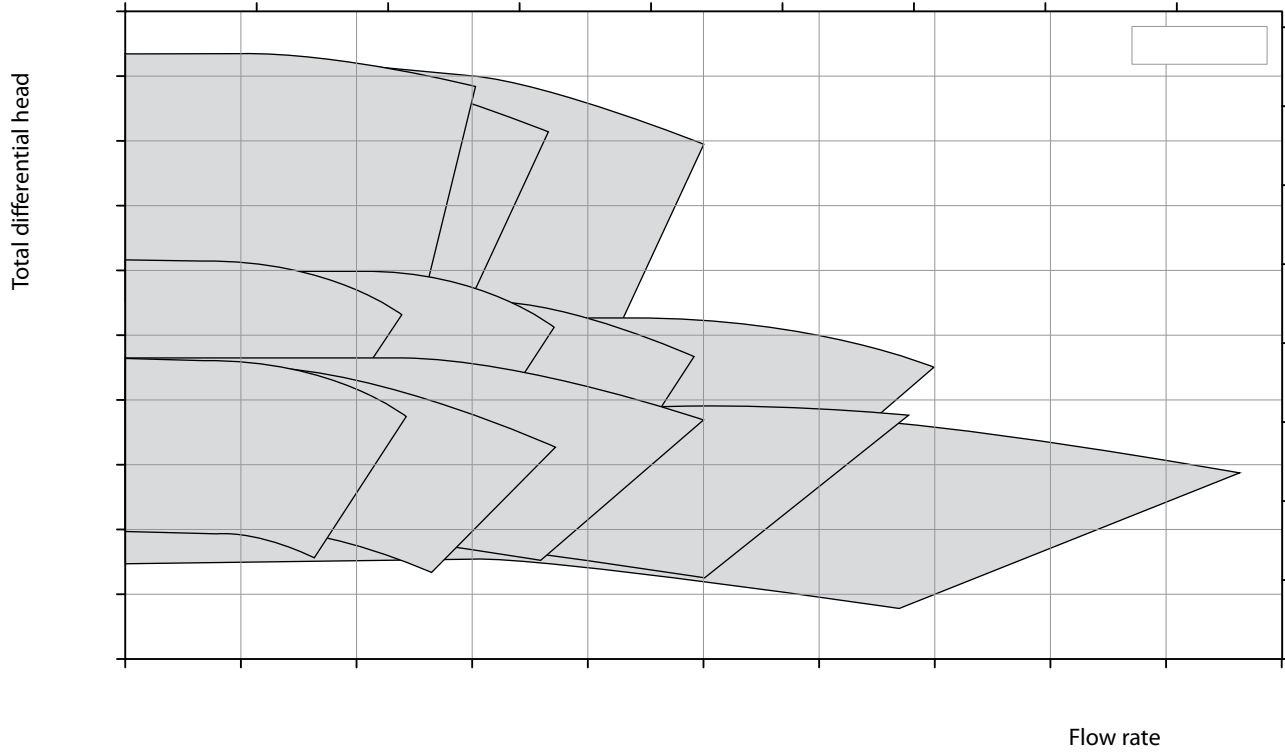
If required, hydraulic tests in acc. with ISO 9906, accuracy class II, can be implemented and the performance curves measured for the corresponding impeller diameter documented.

This option has to be indicated accordingly in the order. The purpose of this test is to verify that the duty point of the manufactured pump complies with the contractual duty point.

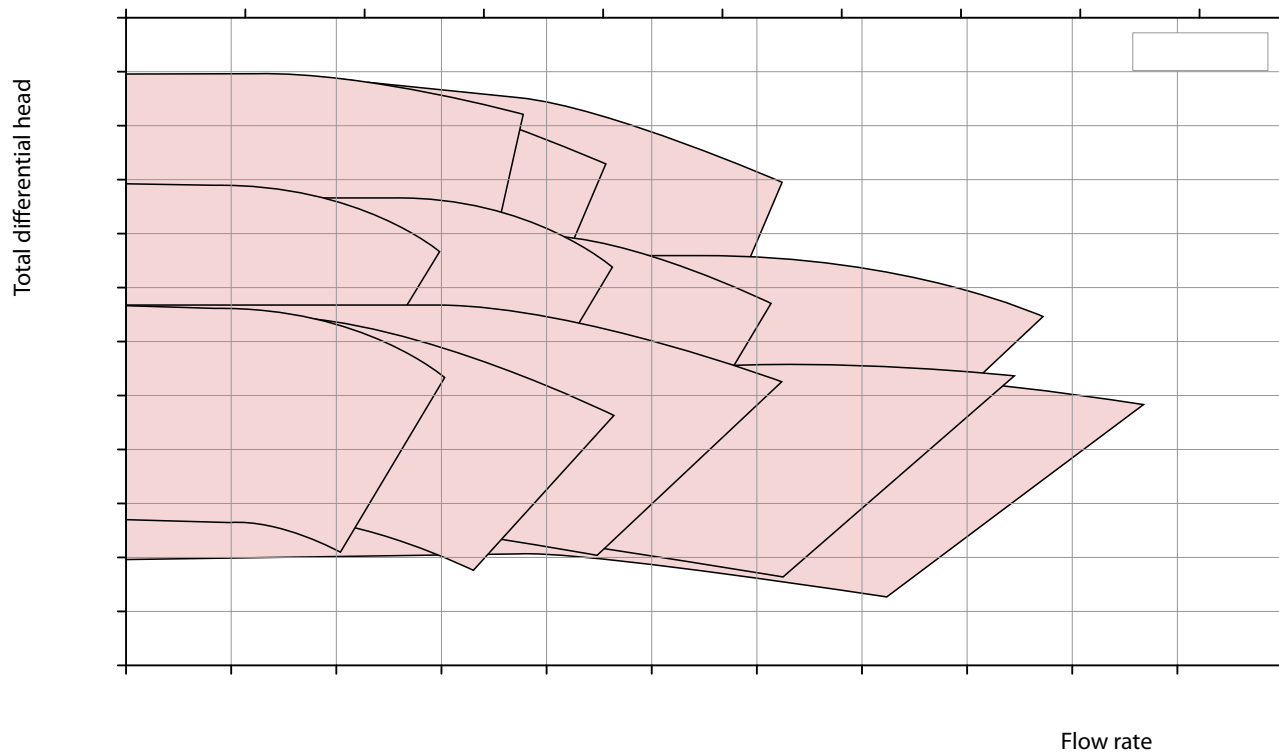
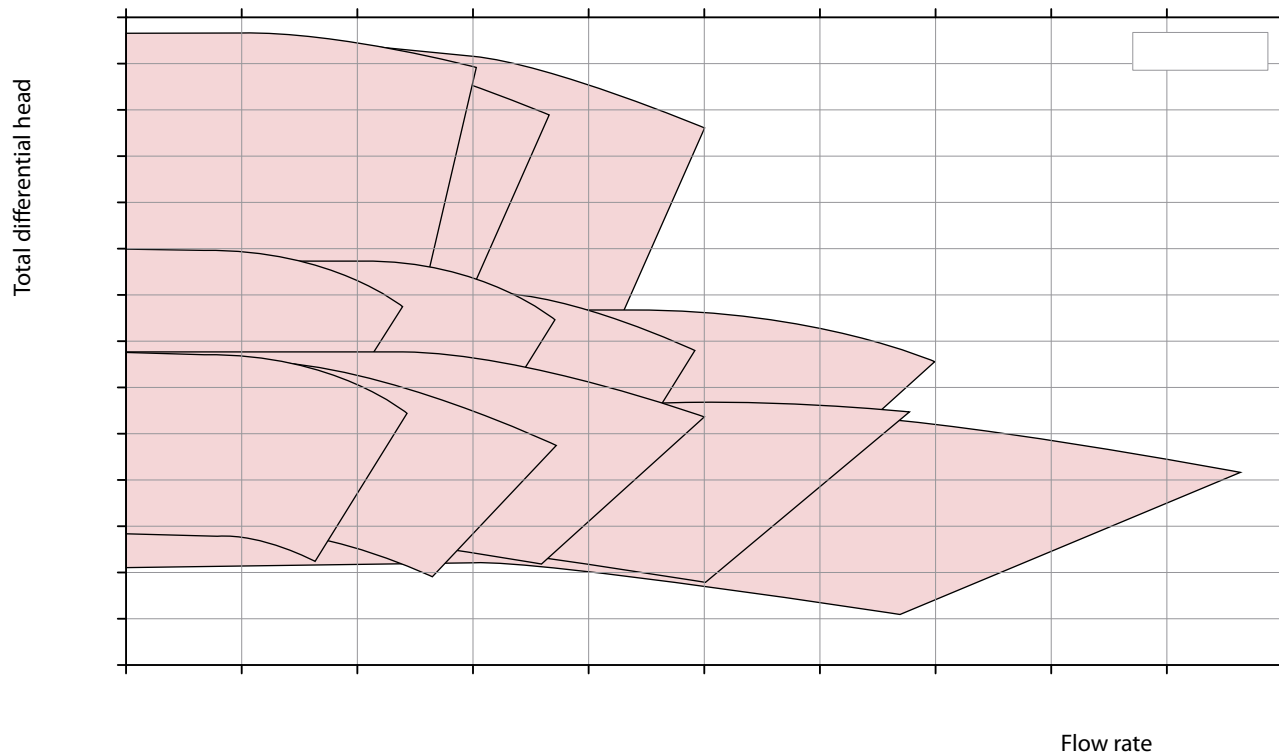
Painting

The pumps are coated with highly heat-resistant white aluminium paint, colour code RAL 9006.

Performance curves 50 Hz



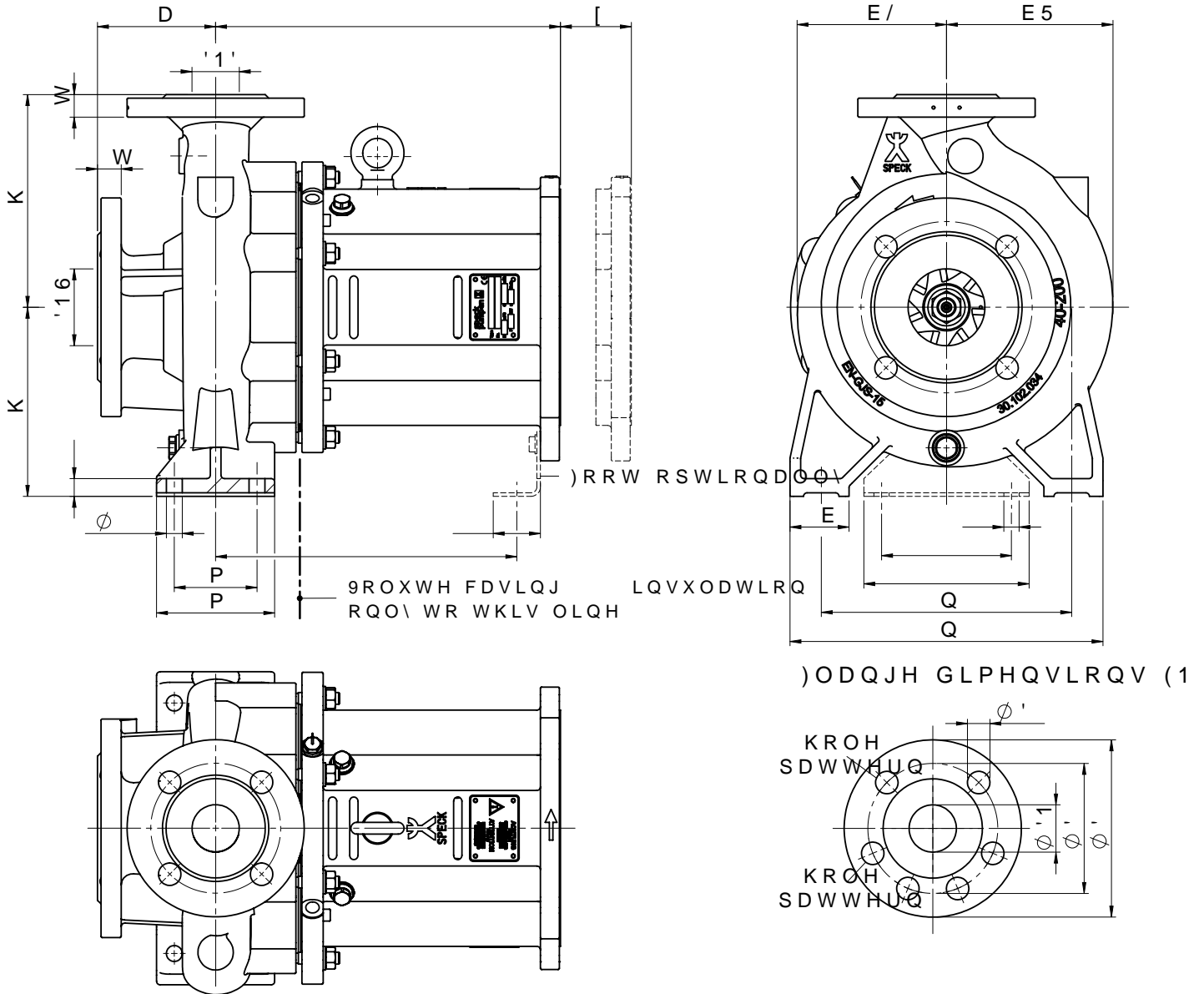
Performance curves 60 Hz



TOE-MA

Heat transfer pumps with magnetic coupling in close coupled version

Pump dimensions



Pump Size	Pump dimensions							Foot dimensions					Pull-out d.
	DNS	DND	a	bL	bR	h1	h2	b	m1	m2	n1	n2	
32-160				•	•	•	...				•	◁	
32-200		•		•	•	•	...			•	◁	•	
32-250				•	•	•	•	•	•	◁	•	•	
40-160				•	•	•	•				•	◁	
40-200				•	•	•	•			•	•	•	
40-250				•	•	•	•	•	•	◁	•	•	
50-160	•			•	•	•	•				•	•	
50-200				•	•	•	•			•	•	•	
50-250				•	•	•	•				•	•	
65-160				•	•	•	•				•	•	
65-200		•		•	•	•	•	•	•	◁	•	•	
80-160			•	•	•	•	•				•	•	

Utility connections and flange dimensions

Utility connections

P1	‰	CE	‘	“
P2	•	CE	‘	“
D1				”“
T1	•	, €”	“ ’	“
T2	•	, €”	”	“

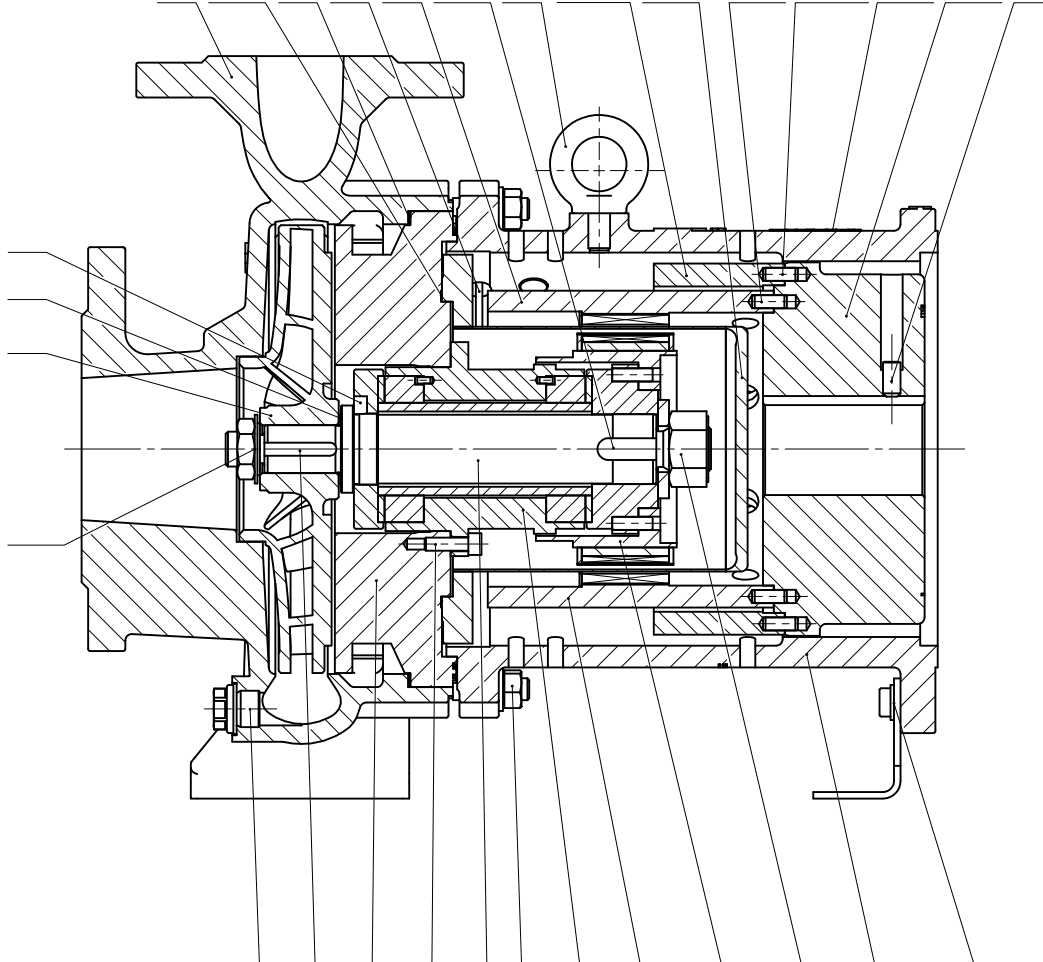
Flange dimensions in acc. with DIN EN 1092-2

øDN	øD2	øD1	t	øD3	Qt. Holes
•				‘	
	...	•	•		
...			•		
	•	...	••		
	••		•		

TOE-MA

Heat transfer pumps with magnetic coupling in close coupled version

Cross-sectional drawing and part list



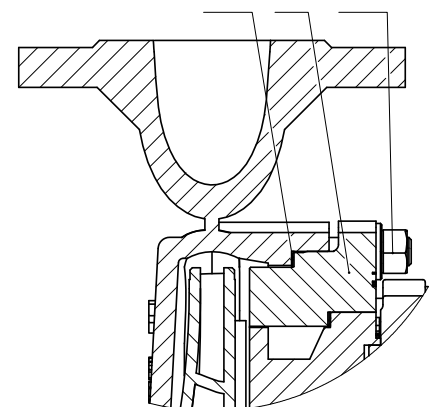
Standard design with nominal impeller diameter 160 and 200 mm

•	
...	•
•	, •
•	
• ¹	••
'	• Ž •
'	• •
Ž -•	Š •
-	• •
• —	— •
Ž -"	~
	• TM
• •-	— •
...	•
...• ...•- —Ž ...••	,
...	••

...•	•
...—	
'	€ Ž •
" —	•
" —	^
'	• f
◁ Ž (•••	
◁ ' (' -	TM
◁	TM
◁ (- ' —	• TM
◁ - Ž (- (
◁ Ž (••• (••-	Š ^
◁ ¹	• TM
◁ (-	" †
◁ " (••-	,

Execution with nom. impeller diameter 250 mm

-	Š •
-	~
•	
◁ •-	
◁ •-	Š ^



* Single components of magnetic coupling (847)
** Execution with MK 75 / 110 only

Interchangeability of parts in between TOE-MN / MA / MI series

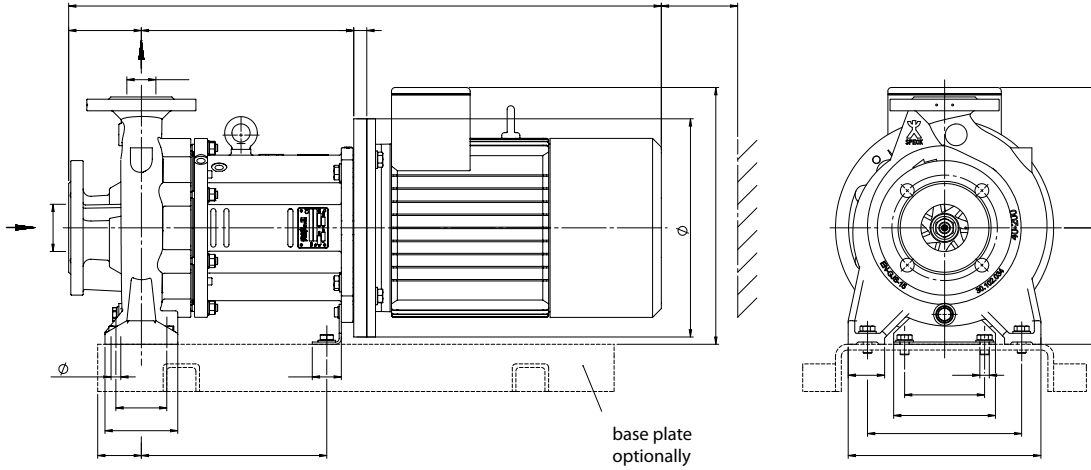
Component	Position	Pump type	Pump size											
			32-160	32-200	32-250	40-160	40-200	40-250	50-160	50-200	50-250	65-160	65-200	80-160
	•	‰ € “ €)		•	,			...	”		(•
		‰ €•					•				,			
•	...	‰ € “ €)		•		•	•			•	•		•	•
		‰ €•					•			•			•	
	•	‰ € “ €) “ €•												
	••	‰ €												
		‰ €) “ €•												
••	•’	‰ € “ €)		•	,			...	”		(•
		‰ €•					•				,			
•	’	‰ € “ €) “ €•												
• f	’•	‰ €												
		‰ €) “ €•												
•	”	‰ €												
		‰ €) “ €•												
• •	’	‰ € “ €) “ €•												
• •	’...	‰ €												
		‰ €) “ €•												
	•	‰ €												
		‰ €) “ €•												
	”•	‰ € “ €)												
		‰ €•												
Š •		‰ € “ €) “ €•												
Š •	-	‰ € “ €)												
		‰ €•												
Š •	-•	‰ € “ €) “ €•												
— €” , “ •	•	‰ € “ €) “ €•												
— €” , •	•	‰ € “ €) “ €•												
	’	‰ € “ €) “ €•												
€	”	‰ € “ €) “ €•												
‰		‰ € “ €) “ €•												

TOE-MA

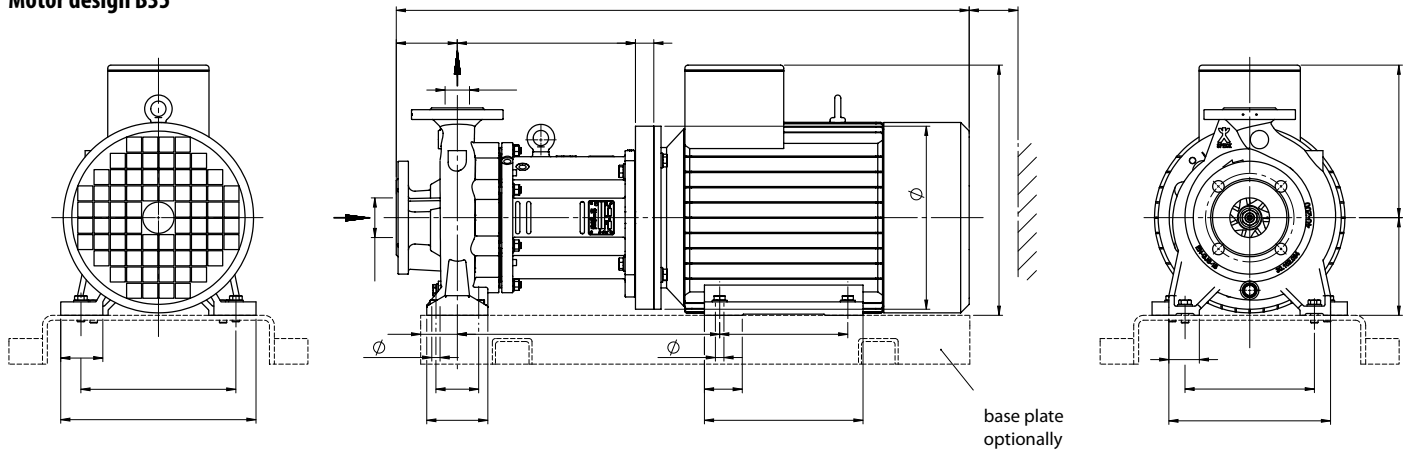
Heat transfer pumps with magnetic coupling in close coupled version

Dimensional drawing

Motor design B5



Motor design B35



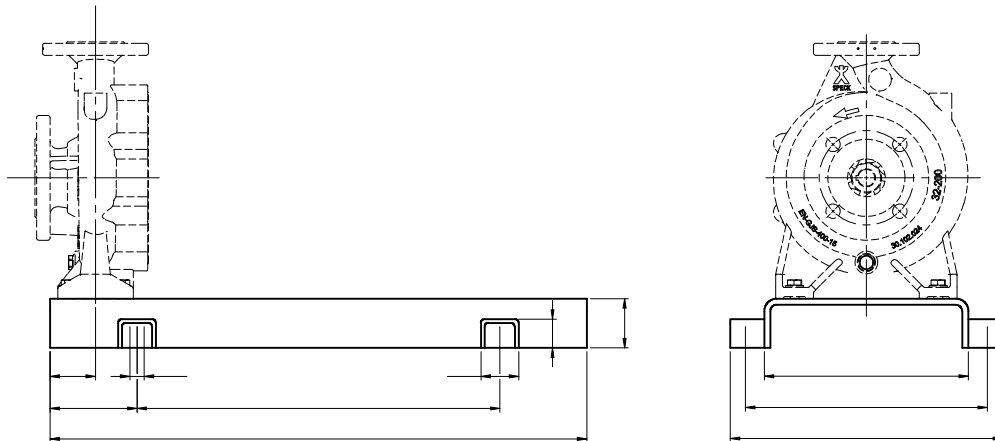
Pump Size	Motor		Power kW		Pump dimensions								Pump set dimensions																									
	Frame size	De- sign	P ₁ , P ₂	4-pole 1450 / 1750	2-pole 2900 / 3500	DNS	DND	a	h2	b	n1	n2	m1	m2	G1	G5*	L4	w1	B	BB	BA	A	AA	AB	øK	øD	o	z*	g									
50-160	€	•	•	- " "	" "										•	◁															◁	•	•	•				
			•	-	-												•																	•	•			
	•	•	•	-	••																																	
			••	" "	" "																																	
	•	•	•	-	" "																																	
			•	" "	" "																																	
	•	•	•	-	" "																																	
			•	" "	" "																																	
	•	•	•	-	" "																																	
			•	" "	" "																																	
•	•	•	-	••																																		
		••	" "	" "																																		

*Dimensions can differ depending on the motor supplier.

Allocation of coupling and base plate

•	€	‡	80	90S	90L	100L	112M	132S	132M	160M	160L	180M	180L
32-160	•												
32-200	•		◁			•							
40-160	•					•							
40-200	•					•		•					
50-160	•		◁			•							
50-200	•					•				◁			
65-160	•		◁			•		•		◁			•
65-200	•					•							
80-160	•					•							
32-250	•		◁			•		•					
40-250	•					•							
50-250	•					•							

Base plate dimensions



Pump size	L4
32-160	...
32-200	...
32-250	''
40-160	...
40-200	...
40-250	''
50-160	...
50-200	...
50-250	''
65-160	''
65-200	''
80-160	''

Base plate	B1	B2	B3	G2	G3	R1	L5	L1	L2	L3
1-270	•	◁	•	...	◁	◁		''		
1-300	◁	◁	◁	...	◁	◁		''		
2-300	◁	◁	◁	...	◁	◁			◁	
1-340	◁				•	•	...	''		
2-340	◁				•	•	...		◁	
1-380	◁	◁			•	•	...	''		
2-380	◁	◁			•	•	...		◁	
3-380	◁	◁			•	•	...	◁		...
4-430	◁		◁		•	•	...		''

○
 † € † % §
 .S (.CE.S. :.
 CE.S. :.
 € , € f
 € f

† € † f .
 Ž .
 CE . : §
 € , € f
 € f

† (' f " †
 % §
 .S .
 CE . : §
 € , € f
 f

† " †
 € , € f

 € , € f
 f

† € † f §
 (€ f .

 € , € f

™ S † " †
 % §
 .S .
 CE . : §
 € , € f

. . . . f ' - €
 CE .
 Ž .
 CE . : §
 € , € f
 € f

. . . . " †
 CE
 Ž .
 CE . : §
 € , € f
 f

○
 ' " †
 .S .
 CE . : §
 € , € f

○
 Ž " §
 CE . : §
 € , € f

○
 Ž " §
 CE . : §
 € , € f

○
 Ž .
 CE . : §
 € , € f

○
 Ž .
 CE . : §
 € , € f

○
 Ž .
 CE . : §
 € , € f

○
 Ž .
 CE . : §
 € , € f

○
 Ž .
 CE . : §
 € , € f

○
 Ž .
 CE . : §
 € , € f

○
 Ž .
 CE . : §
 € , € f

○
 Ž .
 CE . : §
 € , € f

○
 Ž .
 CE . : §
 € , € f

○
 Ž .
 CE . : §
 € , € f

○
 Ž .
 CE . : §
 € , € f

○
 † " §
 Ž .
 CE . : §
 € , € f

○
 Ž .
 CE . : §
 € , € f

○
 Ž .
 CE . : §
 € , € f

○
 Ž .
 CE . : §
 € , € f

○
 Ž .
 CE . : §
 € , € f

○
 Ž .
 CE . : §
 € , € f

○
 Ž .
 CE . : §
 € , € f

○
 Ž .
 CE . : §
 € , € f

○
 Ž .
 CE . : §
 € , € f

○
 Ž .
 CE . : §
 € , € f

○
 Ž .
 CE . : §
 € , € f

○
 † " §
 Ž .
 CE . : §
 € , € f

○
 Ž .
 CE . : §
 € , € f

○
 Ž .
 CE . : §
 € , € f

○
 Ž .
 CE . : §
 € , € f

○
 Ž .
 CE . : §
 € , € f

○
 Ž .
 CE . : §
 € , € f

○
 Ž .
 CE . : §
 € , € f

○
 Ž .
 CE . : §
 € , € f

○
 Ž .
 CE . : §
 € , € f

○
 Ž .
 CE . : §
 € , € f

○
 Ž .
 CE . : §
 € , € f

○
 † " §
 Ž .
 CE . : §
 € , € f

○
 Ž .
 CE . : §
 € , € f

○
 Ž .
 CE . : §
 € , € f

○
 Ž .
 CE . : §
 € , € f

○
 Ž .
 CE . : §
 € , € f

○
 Ž .
 CE . : §
 € , € f

○
 Ž .
 CE . : §
 € , € f

○
 Ž .
 CE . : §
 € , € f

○
 Ž .
 CE . : §
 € , € f

○
 Ž .
 CE . : §
 € , € f

○
 Ž .
 CE . : §
 € , € f

○
 Ž .
 CE . : §
 € , € f

○
 Ž .
 CE . : §
 € , € f

○
 Ž .
 CE . : §
 € , € f

○
 Ž .
 CE . : §
 € , € f



motralec

4 rue Lavoisier . ZA Lavoisier . 95223 HERBLAY CEDEX
Tel. : 01.39.97.65.10 / Fax. : 01.39.97.68.48
Demande de prix par e-mail : service-commercial@motralec.com
www.motralec.com