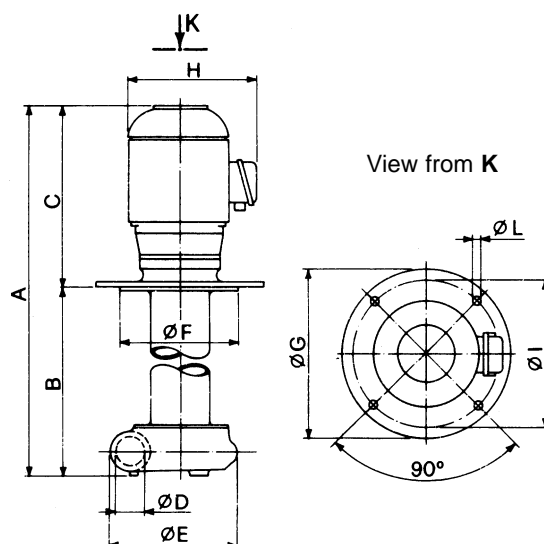


# ► Immersion Range IMM 100/B

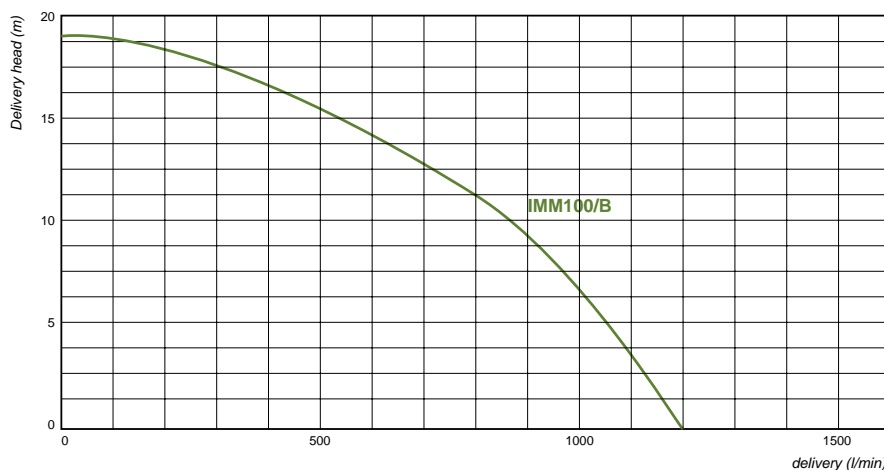


## MECHANICAL FEATURES

Pump Body .....Cast Iron  
 Cover .....Cast Iron  
 Impeller .....Cast Iron  
 Shaft .....Steel

## MOTOR CHARACTERISTICS

Protection .....IP55  
 Insulation .....CL. F  
 Voltage .....Eurovoltage 3PH  
 Frequency .....50Hz



TYPE	KW Absorbed	AMPS 400 V	A mm	B mm	C mm	ØD mm	ØE mm	ØF BSP	ØG BSP	ØH mm	ØI mm	ØL mm	n° L	WEIGHT Kg
IMM 100/B	4.43	8.6	730	350	380	21/2"	235	240	300	240	270	13	4	53.0
	4.43	8.6	980	600	380	21/2"	235	240	300	240	270	13	4	54.3
	4.43	8.6	1180	800	380	21/2"	235	240	300	240	270	13	4	55.5

