

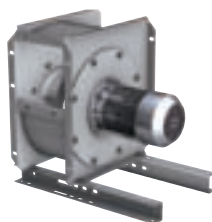
Fan Solutions for wind turbines

Issue 1

motralec

4 rue Lavoisier . ZA Lavoisier . 95223 HERBLAY CEDEX
Tel. : 01.39.97.65.10 / Fax. : 01.39.97.68.48
Demande de prix / e-mail : service-commercial@motralec.com
www.motralec.com

NICOTRA | Gebhardt



fan|tastic solutions



Fan solutions for wind turbines

Quiet and powerful for restricted space

There, where our fans are operating they have to fulfil their job in only one way: powerfull, without noise, and reliable.

The high quality of our products and the reliability of their technical data are based on a certified Quality Management System according to ISO 9001 and on a classification of our standard product lines with tolerance classes acc. to DIN 24 166.



We offer the expertise for optimised solutions

Our experienced experts would be pleased to support you in selecting the most suitable fan and to assist in engineering the most appropriate air flow in your wind turbine plant.

They will work out together with you the **optimised fan solution**:

- respecting a minimum of available installation space
- finding a fan working at lowest noise level
- selecting a unit for reduced maintenance
- offering a fan with highest possible efficiency for specific on board power supply types
- with direct drive and speed variation (if required)





High quality for high demands

Highest possible corrosion protection suitable for extreme conditions







For this type of application we utilise corrosion resistant material for the products.

On top and according to your specification we increase the corrosion protection with powder or wet coating of various qualities and layer thicknesses.

The result:

- Long lifetime and reliable operation
- Reduced maintenance



Fan range		Description	Galvanised steel Coated steel Stainless steel 1.4307 / 1.4404 *	Flow rate q_v max	Total pressure pF	Tolerance class acc. to DIN 24 166
RZA / TZA		Centrifugal fan RZA, double inlet, with direct drive, Impeller blades forward or backward curved		30.000 m ³ /h	1.400 Pa	1
P2M		P2M kompakt centrifugal fan single inlet, with direct drive		45.000 m ³ /h	11.000 Pa	2
RLE		Centrifugal fan with direct drive without scroll, plug fan		12.000 m ³ /h	1.000 Pa	2
Q2M		Centrifugal fan with direct drive without scroll, plug fan		90.000 m ³ /h	5.600 Pa	2

NICOTRA | Gebhardt

motralec

4 rue Lavoisier . ZA Lavoisier . 95223 HERBLAY CEDEX
 Tel. : 01.39.97.65.10 / Fax. : 01.39.97.68.48
 Demande de prix / e-mail : service-commercial@motralec.com
www.motralec.com

fan|tastic solutions