

**motralec**

4 rue Lavoisier . ZA Lavoisier . 95223 HERBLAY CEDEX  
Tel. : 01.39.97.65.10 / Fax. : 01.39.97.68.48  
Demande de prix / e-mail : [service-commercial@motralec.com](mailto:service-commercial@motralec.com)  
[www.motralec.com](http://www.motralec.com)

**NETZSCH**

Pumps & Systems

## TORNADO® Rotary Lobe Pumps

High Performance, Reliability, Maintenance in Place



NETZSCH Pumps & Systems – Solutions you can trust ■

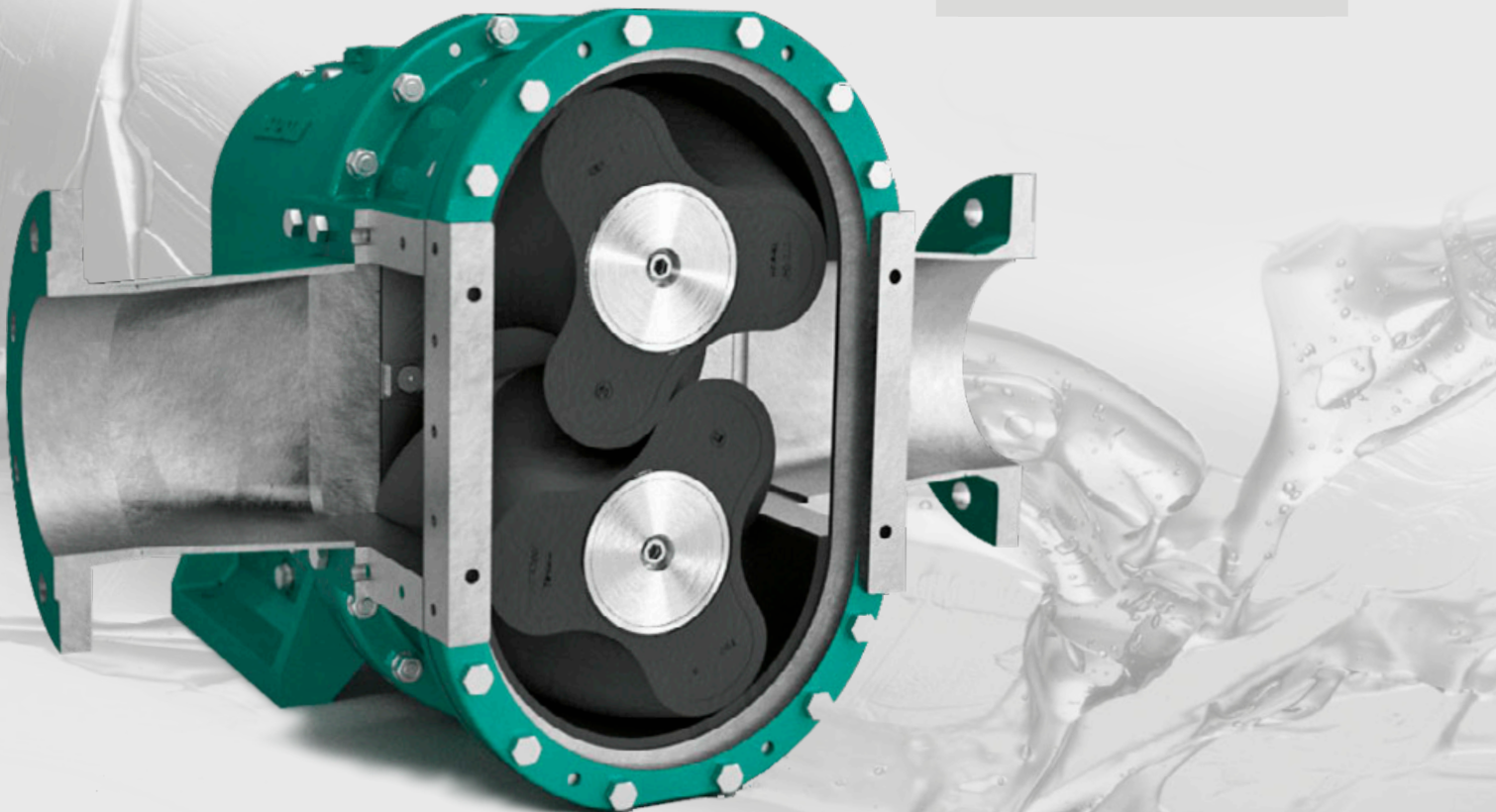
# TORNADO® – high performance, reliability, maintenance in place

High performance rotary lobe pump with maximum operational reliability

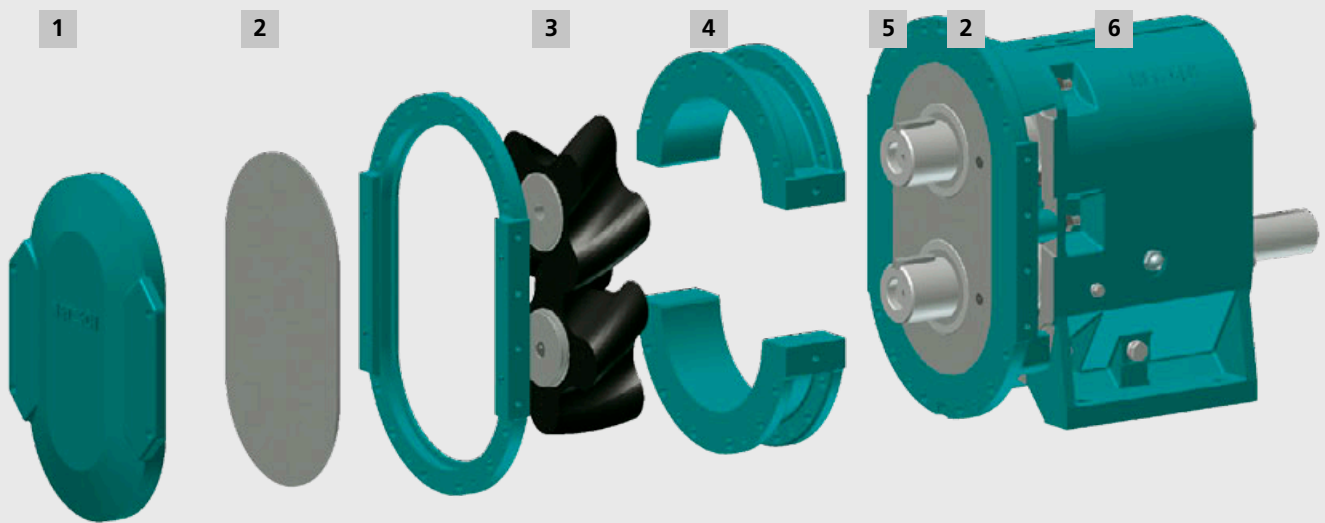
The NETZSCH TORNADO® positive displacement, self priming, valveless pumps offer high performance and are selected and configured for the individual requirements of each application. They are designed for intermittent or continuous operation and provide gentle pumping of the pumped media and ideally suited to transfer, process and dosing applications.

## Advantages

- Maximum operational reliability: the NETZSCH GSS-Technology
- User maintenance in place
- Small installation and maintenance envelope; compact construction
- Installation flexibility
- High suction lift capability – up to 8 mwc
- Dry running capability
- Reversible flow
- Low lifecycle costs



Our design – your benefit: low life cycle costs



## 1 Front Cover

Rotors, cover seal and product seals can be accessed for inspection, service or replacement by simply removing the front cover. Disassembly of the inlet and outlet pipework and pump housing is not necessary.

## 2 Wear Plates

Abrasion and chemically resistant, replaceable wear plates are fitted both sides of the rotors.

## 3 Rotors

Straight sided or helical rotors are selected to suit individual application requirements. Rotors are available as bi-lobe, tri-lobe or four-lobe and wide a range of materials are available.

## 4 Housing Crescents

Modular construction allows for the crescents to be simply replaced should wear occur. Pump life time can be further extended with the option of replaceable crescent liners.

## 5 Product Seals

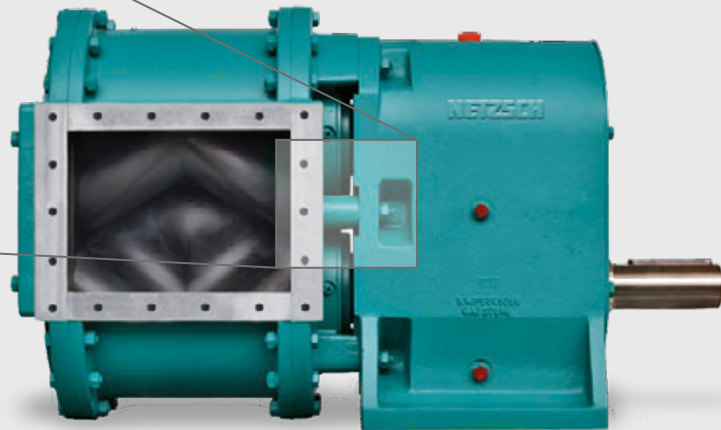
Wide range of product seals and materials are available, which are selected to suit individual application requirements. Seal arrangements include easy access connections for seal quench or flush.

## 6 Pump Gear Box

The patented gear box design includes NETZSCH GSS-Technology separating the pump head from the gear box which eliminates cross contamination between the pump media and gear box lubricant.

# The NETZSCH GSS-Technology – open gap between pumphead and pump gear box

## NETZSCH GSS-Technology – Gearbox Security System



- Provides positive separation between pump head/product seals and pump gear box
- Protects bearing and timing gears extending operational life time
- Eliminates product ingress into gear box in the unlikely event of product seal failure
- Eliminates the risk of gear oil ingress into the pump media
- Reduces product seal replacement costs

### A broad application spectrum

NETZSCH TORNADO® pumps are suitable for a wide range of applications but are particularly good for liquids which:

- Contain large solids, solids up to 70 mm in diameter can be pumped
- Have a wide range of viscosities, from 1 mPas up to 1 million mPas
- Are shear sensitive, i.e. thixotropic, dilatent, pseudoplastic, etc
- Are fibrous and/or abrasive
- Are lubricative or non lubricative

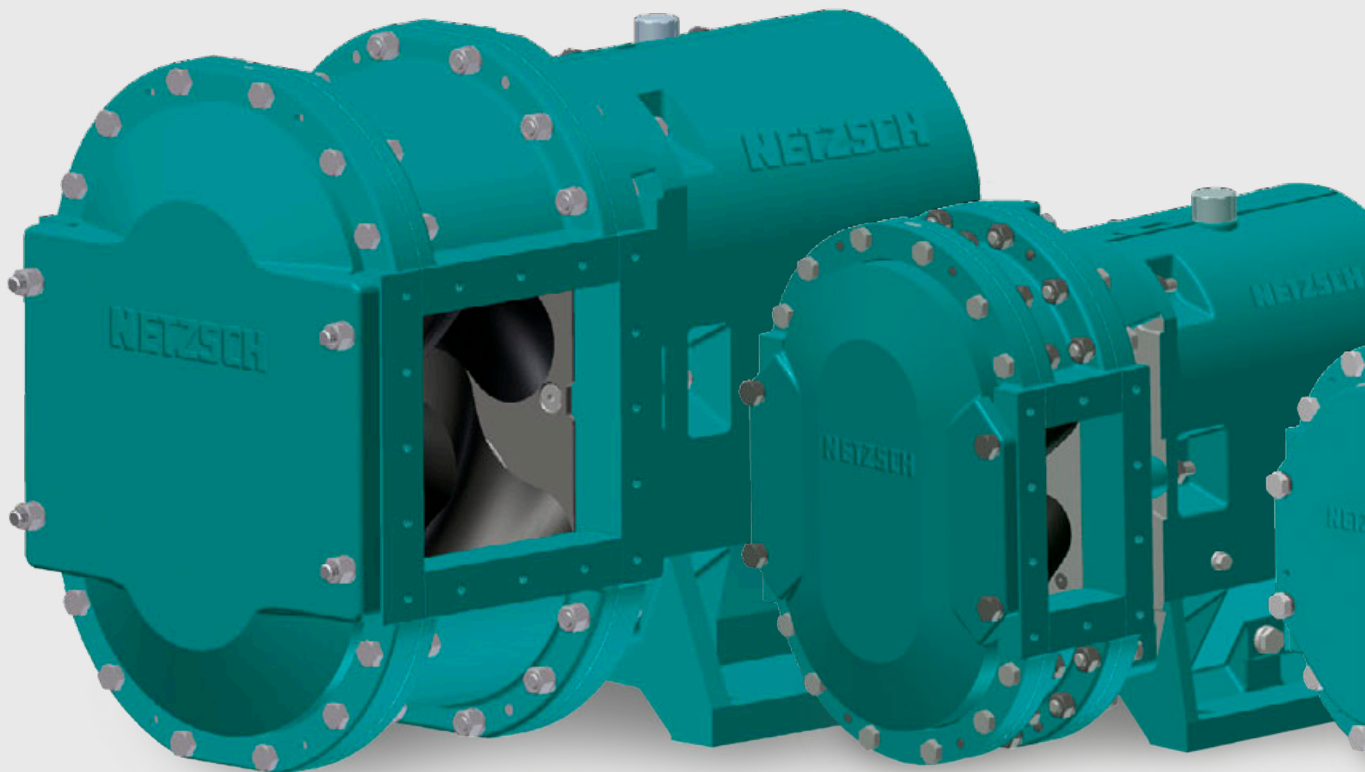
# The NETZSCH TORNADO® module system – the optimal solution for any application

Three frames supporting twelve pump sizes provide standard solutions for flowrates from 1 m<sup>3</sup>/h to 1,000 m<sup>3</sup>/h up to 6 bar

NETZSCH TORNADO® pumps can be selected and configured to suit individual duty, application and installation requirements. The wide range of wetted materials and product seals available cover the majority of applications in the Environmental & Energy, Chemical & Paper and Oil & Gas process industries.

## Customised Solutions

Customised solutions for higher pressures and flowrates or different materials and configurations are available.

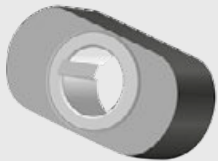


TORNADO® XLB-Frame

TORNADO® XB-Frame

## The rotors – low pulse, smooth pumping

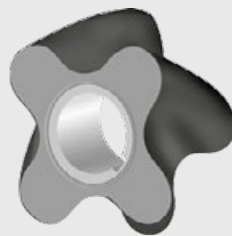
### Rotors in different geometries and materials



2lobe straight



3lobe helical



4lobe helical

The materials and design of the rotors can be selected for the individual requirements of the product to be pumped. Geometries are available for products which are viscous, which are abrasive and which contain solids. The correct selection of materials and geometries increases the rotors resistance to wear and contributes to extended operating life.

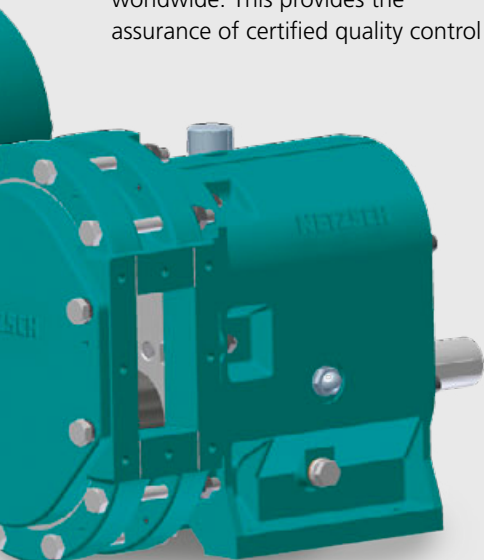
## TORNADO® – design, engineering, manufacture, assembly – all under one roof

All major parts of the NETZSCH TORNADO® rotary lobe pump, including the rotors are produced within NETZSCH factories. NETZSCH have 6 manufacturing facilities worldwide. This provides the assurance of certified quality control

and competitive lead times and supports innovative ongoing product development. The latest production methods combined with more than 50-years experience in producing positive displacement pumps are the basis of NETZSCH's core competence.



Vulcanisation – a key process in the production of elastomeric rotors



TORNADO® MB-Frame

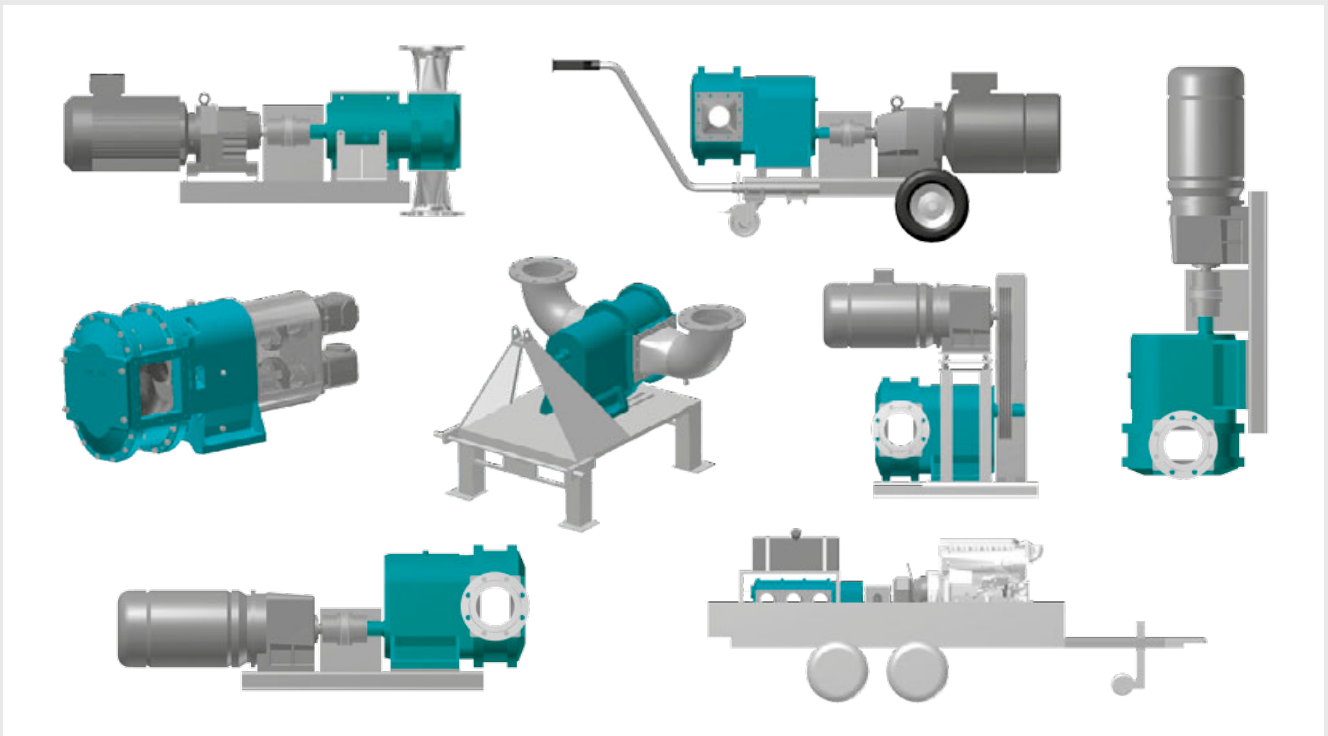


High precision, repeatable production on 7 axis CNC machines (drive shaft shown)

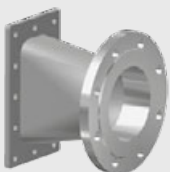
## TORNADO® – installation flexibility

TORNADO® pumps can be installed with inlet and outlet ports horizontally or vertically. Both simple standard and complex customised drive and base plate arrangements are available to suit

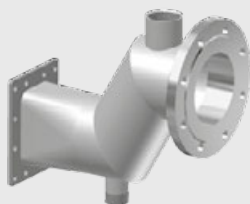
individual application needs. Base plates can be for fixed installation or mobile units. The range of drives available includes electric motors, diesel engines and hydraulic drives.



Standard inlet and outlet pipework adapters are available in a wide range of designs



Straight flanges



Goose-neck form



Fflanges 90° upwards

### Further Options

Customized adapters are available to suit specific requirements.

# TORNADO® – totally reliable everywhere

TORNADO® rotary lobe pumps will handle your product smoothly, safely and reliably.

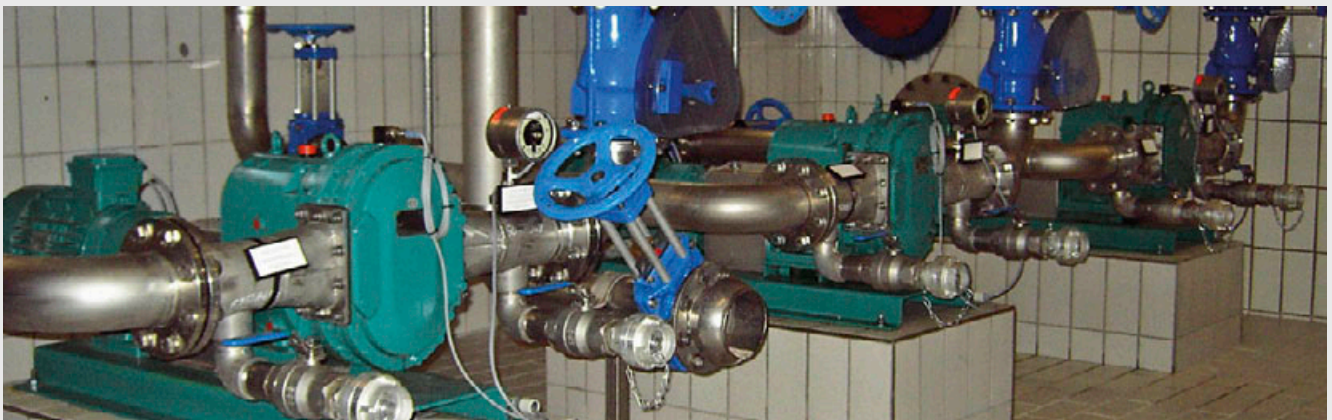
You can trust NETZSCH – over 50 years of experience across all process industry sectors.



Feed pump for a biogas substrate. Flow rate up to 40 m<sup>3</sup>/h at a pressure of 2 bar.



A TORNADO® pump in a paper factory for unloading Kaolin from tankers. Flow rate is 75 m<sup>3</sup>/h and pressure is 4 bar.



Application in a waste water treatment works: here TORNADO® pumps are pumping waste water sludge with 3% DS at a flow rate of 55 m<sup>3</sup>/h and pressure of 2 bar.



A mobile TORNADO® pump in a rendering plant. A mixture of fat and waste water is pumped at a flow rate of 50 m<sup>3</sup>/h at a pressure of 3 bar.

## Further Information

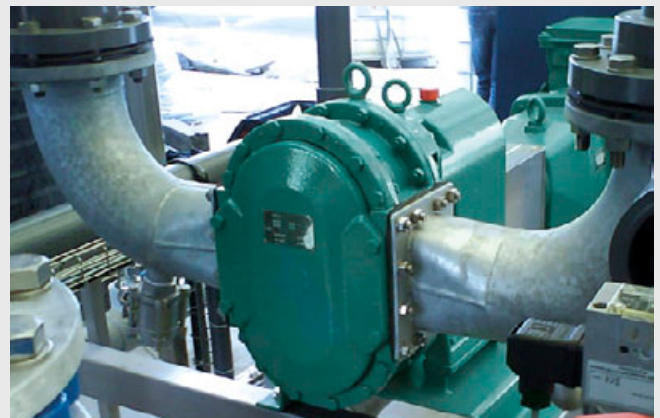
TORNADO® Mobile  
Brochure NMP · 045 · 02



A TORNADO® pump vertically mounted on a container for oil field drilling mud feed to centrifuge.



A TORNADO® mobile unit offers quick and flexible removal of large quantities of different liquids. Flow rates offered up to 1,000 m<sup>3</sup>/h at pressures up to 6 bar.



A TORNADO® pump for 1-3% DS waster water in a membrane filter system for flow rates up to 80 m<sup>3</sup>/h in either direction of rotation.

# NETZSCH



**motralec**

4 rue Lavoisier . ZA Lavoisier . 95223 HERBLAY CEDEX

Tel. : 01.39.97.65.10 / Fax. : 01.39.97.68.48

Demande de prix / e-mail : [service-commercial@motralec.com](mailto:service-commercial@motralec.com)

[www.motralec.com](http://www.motralec.com)