

FEATURING

- **SW Series: Shallow Well Jet Pumps**
- **SF Series: Deep Well Jet Pumps**
- **SFH Series: Convertible Jet Pumps For Shallow Well or Deep Well Water Systems**
- **MSH Series: Convertible Multi-Stage Jet Pumps**
- **MSV Series: Vertical Multi-Stage Jet Pumps**
- **SF50SNH Series: Booster Jet Pumps**
- **MSC Series: Multi-Stage Centrifugal Pumps**
- **Booster Pumps: BF5000, BF8000, BF12000, BF18K11 and BF25M10**
- **SFLP Series: Self-Priming Lawn Sprinkler 3/4 - 3HP Single or Three Phase**
- **BMLS 3 & 5 HP: High and Medium Self-Priming Centrifugal Pumps**
- **EC Series: Centrifugal Pumps**

motralec

4 rue Lavoisier . ZA Lavoisier . 95223 HERBLAY CEDEX
Tel. : 01.39.97.65.10 / Fax. : 01.39.97.68.48
Demande de prix / e-mail : service-commercial@motralec.com
www.motralec.com



JET PUMPS AND CENTRIFUGAL PUMPS

Betta FLO 

★ **Residential**

★ **Commercial**

★ **Industrial**

★ **Municipal**

★ **Irrigation**

MAXIMUM Efficiency

MAXIMUM Performance

MAXIMUM Dependability

SW SERIES: SHALLOW WELL JET PUMPS

The SW Series features versatile design for continuous high capacity operation. Ratings are within the electrical motor capabilities. Rugged cast iron construction with bolt-on shallow well adaptors. All units are provided with clean out ports and are tapped for air volume control. Drains are bottom located. Molded closed impeller and high impact diffuser provided for greater efficiency. Pumps are close coupled to square flange motors. This series is intended for use in homes and farms.



QUALITY FEATURES

ELECTRIC MOTORS:

NEMA standard, single phase, 3500RPM, 60Hz, Capacitor Start, dual ball bearings, with automatic reset overload protection. Motors are dual voltage with voltage change switch. Square flange motors provide for simple back pull out for service without disturbing pipe connections.

IMPELLERS:

Closed impeller design of NORYL® GE.TM for peak efficiency. This design assures smooth performance.

MECHANICAL SEALS:

Carbon/Ceramic faces, Buna elastomers, and 300 series stainless steel. Optional seals are available.

GASKETS:

All pumps feature the proper gaskets for better sealing and simplified maintenance.

PERFORMANCE RATINGS

SHALLOW WELL

MODEL #	PART #	HP	SINGLE PHASE VOLTS	NPT INCH		DEPTH TO WATER Feet	TUBE & NOZZLE NUMBER	DISCHARGE PRESSURE PSI					SHUT OFF PSI	WGT LBS.
				SUCT.	DISC.			10	20	30	40	50		
								CAPACITY - U.S. GALLONS PER HOUR						
SW 50	JSW0504-110S	1/2	115/230	1 1/4	3/4	5	309/80145	756	756	642	390	180	58	40
						10		708	708	606	360	114	55	
						15		612	606	540	276	30	51	
						20		474	474	462	222		47	
						25		378	366	360	150		43	
SW 75	JSW0754-110S	3/4	230/115	1 1/4	3/4	5	309/10190	1344	1388	1020	660	288	57	45
						10		1224	1224	960	576	192	54	
						15		1080	1074	846	468	72	51	
						20		834	828	744	372		48	
						25		630	624	624	282		45	
SW 100	JSW1004-110S	1	230/115	1 1/4	3/4	5	309/10200	1524	1518	1170	792	414	58	50
						10		1428	1422	11347	744	348	55	
						15		1212	1206	1020	648	210	53	
						20		948	972	942	522	30	50	
						25		744	744	732	468		46	

Specifications are subject to change without notice.

SF SERIES: DEEP WELL JET PUMPS

The economical SF Series deep well jet pumps are available in 1/2 through 1 HP. This series features cast iron pump housing directly coupled to square flanged motors. Molded closed impeller design provide for greater efficiencies. Drain plugs are bottom located. This series can be used on 2", 4", or larger diameter deep wells. Bolt-on ejectors are also available for shallow well or booster application.



QUALITY FEATURES

ELECTRIC MOTORS:

NEMA standard, single phase, 3500RPM, 60Hz, Capacitor Start, dual ball bearings, with automatic reset overload protection. Motors are dual voltage with voltage change switch. Square flange motors provide for simple back pull out for service without disturbing pipe connections.

IMPELLERS:

Closed impeller design of NORYL® GE.TM for peak efficiency. This design assures smooth performance.

MECHANICAL SEALS:

Carbon/Ceramic faces, Buna elastomers, and 300 series stainless steel. Optional seals are available.

GASKETS:

All pumps feature the proper gaskets for better sealing and simplified maintenance.

PERFORMANCE RATINGS														
DEEP WELL														
MODEL #	PART #	HP	SINGLE PHASE VOLTS.	NPT INCH		DEPTH TO WATER Feet	TUBE & NOZZLE NUMBER	DISCHARGE PRESSURE PSI					SHUT OFF PSI	WEIGHT LBS.
				SUCT.	DISC.			10	20	30	40	50		
CAPACITY - U.S. GALLONS PER HOUR														
SF 50	JSF0504-110S	1/2	115/230	1 1/4	3/4	5	SW80145	690	672	672	582	366	64	40
						10		635	624	612	534	330	62	
						15		552	540	534	510	264	60	
						20		432	426	426	414	186	58	
						25		306	306	306	306	114	56	
SF 75	JSF0754-110S	3/4	230/115	1 1/4	3/4	5	SW80160	876	870	870	738	438	60	45
						10		876	870	870	738	384	58	
						15		804	804	804	723	294	56	
						20		642	642	636	606	156	54	
						25		444	444	432	420	72	50	
SF 100	JSF1004-110S	1	230/115	1 1/4	3/4	5	SW80170	942	936	930	912	576	60	50
						10		942	936	930	912	552	58	
						15		903	894	894	858	408	56	
						20		702	696	696	690	216	53	
						25		504	516	510	504	72	51	

SFH SERIES: CONVERTIBLE JET PUMPS FOR SHALLOW WELL OR DEEP WELL WATER SYSTEM



SFH Series convertible jet pumps feature a versatile “bolt-on” jet for a wide range of applications providing optimum performance on 2” and 4” wells. Self-priming on shallow well applications and convertible for deep wells. This series offers a rugged cast iron construction. Closed impeller designed for efficiency. Impellers are available in brass or glass filled NORYL®. Pumps are close coupled to heavy-duty square flange NEMA motors.

PERFORMANCE RATINGS													
SHALLOW WELL													
MODEL #	PART #	HP	SINGLE PHASE VOLTS	NPT INCH		TUBE & NOZZLE NUMBER	DISCHARGE PRESSURE PSI	DEPTH TO WATER Feet					WEIGHT LBS.
				SUCT.	DISC.			5	10	15	20	25	
								CAPACITY - U.S. GALLONS PER MINUTE					
SFH 50 SFH 50B	JSFH0504-110S JSFH0505-110S	1/2	115/230	1 1/4	1	SW80145	20	15	13	11	9	7.5	51
							30	15	13	11	9	7.5	
							40	14	11	9.5	8.5	7	
							50	8	6.5	6	4.5	3.5	
SFH 75 SFH 75B	JSFH0754-110S JSFH0755-110S	3/4	230/115	1 1/4	1	SW80170	20	22.5	20.5	18	15	11	52
							30	22.5	20.5	18	15	11	
							40	22	20.5	18	15	11	
							50	15	14.5	13	10.5	9	
SFH 100 SFH 100B	JSFH1004-110S JSFH1005-110S	1	230/115	1 1/4	1	SW80190	20	27.5	25	21	17.5	13	55
							30	27.5	25	32	17.5	13	
							40	27	24	21	17.5	13	
							50	19	17.5	16.5	15	10	
SFH 150 SFH 150B	JSFH1504-110S JSFH1505-110S	1 1/2	230/115	1 1/4	1	SW80210	30	32	32	28	23	18	61
							40	32	32	28	23	18	
							50	22.5	22.5	20	17.5	16	

SFH SERIES: CONVERTIBLE JET PUMPS FOR SHALLOW WELL OR DEEP WELL WATER SYSTEM

QUALITY FEATURES

PRESSURE SWITCHES:
Heavy-duty pressure switch has been selected to conform to rigid specifications for precision, no-drift operation. Standard features include straight through wiring, rustproof cover and simple adjustment.

DIFFUSERS:
The unique diffuser is case iron accurately-engineered, smooth water passage for peak efficiency and economy in operation

IMPELLERS:
Closed impellers design for peak efficiency. This design assures smooth performance.

ELECTRIC MOTORS:
NEMA standard single phase, dual voltage, 3500RPM, 60 Hz, capacitor start, dual ball bearings, built in overload with automatic reset. Square flanged motors provide for simple back pull out for servicing without disturbing pipe connections.

GASKETS:
All pumps feature the proper gaskets for better sealing and simplified maintenance.

PERFORMANCE RATINGS																
DEEP WELL																
4" DUAL PIPE JETS - 1 1/4" SUCTION - 1" DISCHARGE																
MODEL #	PART #	HP	TUBE & NOZZLE NUMBER	DEPTH TO WATER - Feet												
				20	30	40	50	60	70	80	90	100	110	120	130	140
				CAPACITY - U.S. GALLONS PER HOUR												
SFH50	JSFH0504-110S	1/2	80145	860	655											
			80130	600	600	600	460	300								
			80110	480	480	480	380	300	260	200	180					
SFH75	JSFH0754-110S	3/4	80160	1020	900	885										
			80130	660	660	660	600	510	415	325						
			80110	480	480	480	480	460	440	400	372	860	210	180		
SFH100	JSFH1004-110S	1	80170	1100	890	720										
			80140	860	860	860	720	610	510	400						
			80120	570	570	570	570	500	460	428	400	372	360	330		
SFH150	JSFH1504-110S	1 1/2	80170	1200	930	740	490									
			80140	860	860	860	750	620	525	440	330	240	150			
			80120	570	570	570	570	570	500	460	440	420	410	400	225	170

2" SINGLE PIPE JETS - 1 1/4" SUCTION																
MODEL #	PART #	HP	TUBE & NOZZLE NUMBER	DEPTH TO WATER - Feet												
				20	30	40	50	60	70	80	90	100	110	120	130	140
				CAPACITY - U.S. GALLONS PER HOUR												
SFH50	JSFH0504-110S	1/2	80130	790	699											
	JSFH0505-110S		80110	460	460	400	360	290	180							
SFH75	JSFH0754-110S	3/4	80130	600	600	600	540	480	400							
	JSFH0755-110S		80110	460	460	460	460	440	400	380	360	280	180			
SFH100	JSFH1004-110S	1	80140	800	800	800	700	580	500	360						
	JSFH1005-110S		80120	560	560	560	560	480	440	400	380	360	300	280		
SFH150	JSFH1504-110S	1 1/2	80140	820	820	730	600	520	420	300	200					
	JSFH1505-110S		80120	570	570	570	570	500	440	420	400	380	340	300		

Specifications are subject to change without notice.

MSH SERIES: CONVERTIBLE MULTI-STAGE JET PUMPS



MSH Series are available in a wide range of models from ¾ through 2 HP. Betta Flo pumps are designed to provide trouble-free economical service for years to come. Impellers are available in brass or glass filled NORYL®. Pumps feature a versatile “bolt-on” jet for a wide range of applications. Pumps are close mounted to NEMA “J” electric motors.

PERFORMANCE RATINGS													
SHALLOW WELL													
MODEL #	PART #	HP	SINGLE PHASE VOLTS	NPT INCH		TUBE & NOZZLE NUMBER	DISCHARGE PRESSURE PSI	DEPTH TO WATER - Feet					WEIGHT LBS.
				SUCT.	DISC.			5	10	15	20	25	
								CAPACITY - U.S. GALLONS PER HOUR					
MSH75 MSH75B	JMSH0754-110C JMSH0755-110C	¾	230/115	1 1/4	1	80170	20	1350	1050	920	720	580	55
							30	1260	1040	910	710	570	
							40	1150	1030	890	690	560	
							50	900	1020	880	680	550	
MSH100 MSH100B	JMSH1004-110C JMSH1005-110C	1	230/115	1 1/4	1	80190	20	1410	1410	1400	1200	870	57
							30	1410	1400	1390	1120	870	
							40	1410	1390	1370	1060	860	
							50	1410	1390	1360	1050	860	
MSH150 MSH150B	JMSH1504-110C JMSH1505-110C	1 1/2	230/115	1 1/4	1	80210	30	1800	1750	1440	1440	1190	66
							40	1790	1690	1420	1420	1150	
							50	1790	1650	1410	1410	900	
							60	1790	1600	1390	1380	900	
MSH200 MSH200B	JMSH2004-120C JMSH2005-120C	2	230	1 1/4	1	80210	40	1800	1790	1780	1600	1400	72
							50	1800	1790	1780	1600	1300	75
							60	1800	1790	1780	1600	1300	

"B" Models are equipped with brass impeller.

Specifications are subject to change without notice.

MSH SERIES: CONVERTIBLE MULTI-STAGE JET PUMPS

QUALITY FEATURES

PRESSURE SWITCHES:

Heavy-duty pressure switch has been selected to conform to rigid specifications for precision, no-drift operation. Standard features include straight through wiring, rustproof cover and simple adjustment.

DIFFUSERS:

The unique diffuser is case iron accurately-engineered, smooth water passages for peak efficiency and economy in operation

IMPELLERS:

Closed impellers design. Impellers are brass or molded NORYL® for peak efficiency. This design assures smooth performance.

MECHANICAL SEALS:

Carbon/ceramic faces, Buna elastomers, and 300 series stainless steel.

ELECTRIC MOTORS:

NEMA “J” standard single phase, ½ to 1½ HP are dual voltage with voltage change switch, 2 HP are 230V, 3500RPM, 60Hz, capacitor start, dual ball bearings, and built-in overload with automatic reset.

REGULATING VALVE:

Efficient heavy-duty regulator, adjustable to varying pumping conditions. Regulators are not required on shallow well application

GASKETS:

All pumps feature the proper gaskets for better sealing and simplified maintenance.

PERFORMANCE RATINGS																	
DEEP WELL																	
4" DUAL PIPE JETS - 1 1/4 SUCTION - 1" DISCHARGE																	
MODEL #	PART #	HP	TUBE & NOZZLE NUMBER	DEPTH TO WATER - Feet													
				30	40	50	60	70	80	90	100	110	120	130	140	180	
CAPACITY - U.S. GALLONS PER HOUR																	
MSH75	JMSH0754-110C	3/4	80160	900	800	720											
	JMSH0755-110C		80130	630	630	630	630	590	502	447	368						
MSH75B	JMSH0755-110C	3/4	80110	360	360	360	360	360	360	360	360	311	200	175	128		
			MSH100	JMSH1004-110C	80170	1160	960	800									
				JMSH1005-110C	80130	670	670	670	670	590	510	447	382				
MSH100B	JMSH1005-110C	1	80110	400	400	400	400	400	400	400	400	360	232	208	195		
			MSH150	JMSH1504-110C	80190	1690	1420	1150									
				JMSH1505-110C	80150	720	720	720	720	720	717	661	606				
MSH150B	JMSH1505-110C	1 1/2	80110	480	480	480	480	480	480	480	480	400	390	390	380	290	
			MSH200	JMSH2004-120C	80210	1800	1690	1400									
				JMSH2005-120C	80150	730	730	730	730	730	720	700	670	660	600	520	410
MSH200B	JMSH2005-120C	2	80110	480	480	480	480	480	480	480	480	460	400	390	360	320	

DEEP WELL																	
2" SINGLE PIPE JETS - 1 1/4 SUCTION																	
MODEL #	PART #	HP	TUBE & NOZZLE NUMBER	DEPTH TO WATER - Feet													
				30	40	50	60	70	80	90	100	110	120	130	140	180	
CAPACITY - U.S. GALLONS PER HOUR																	
MSH75	JMSH0754-110C	3/4	80130	600	600	600	560	540	430	380							
	JMSH0755-110C		80110	330	330	330	330	300	290	230	180	120	110				
MSH100	JMSH1004-110C	1	80130	630	630	630	600	580	460	390	300						
	JMSH1005-110C		80110	360	360	360	360	360	360	360	320	310	290	270	140		
	MSH150		JMSH1504-110C	80130	710	710	710	710	710	690	600	590					
JMSH1505-110C		80110	420	420	420	420	420	420	420	420	380	330	320	290	260		
MSH150B	JMSH1505-110C	1 1/2	80130	720	720	720	720	720	710	700	630	580	460	390	210		
			MSH200	JMSH2004-120C	80130	720	720	720	720	720	710	700	630	580	460	390	210
				JMSH2005-120C	80110	430	430	430	430	430	430	420	420	410	390	370	330

Specifications are subject to change without notice.

MSV SERIES: VERTICAL MULTI-STAGE JET PUMPS



MSV Series are available in a wide range of models from 3/4 through 2 HP. Betta Flo pumps are designed to provide trouble-free economical service for years to come. Impellers are available in brass or glass filled NORYL[®]. Various jets are available for a wide range of applications. Pumps are close mounted to NEMA "J" electric motors.

GENERAL INFORMATION						
MSV - NORYL IMPELLERS						
MODEL #	PART #	HP	SINGLE PHASE VOLTS	NPT INCH		WEIGHT LBS.
				SUCT.	DISC.	
MSV 75	JMSV0754-110C	3/4	230/115	1 1/4	1	57
MSV 100	JMSV1004-110C	1	230/115	1 1/4	1	59
MSV 150	JMSV1504-110C	1 1/2	230/115	1 1/4	1	68
MSV 200	JMSV2004-120C	2	230	1 1/4	1	74

MSV - BRASS IMPELLERS						
MODEL #	PART #	HP	SINGLE PHASE VOLTS	NPT INCH		WEIGHT LBS.
				SUCT.	DISC.	
MSV 75B	JMSV0755-110C	3/4	230/115	1 1/4	1	59
MSV 100B	JMSV1005-110C	1	230/115	1 1/4	1	61
MSV150B	JMSV1505-110C	1 1/2	230/115	1 1/4	1	70
MSV 200B	JMSV2005-120C	2	230	1 1/4	1	76

Specifications are subject to change without notice.

MSV SERIES: VERTICAL MULTI-STAGE JET PUMPS

QUALITY FEATURES

PRESSURE SWITCHES:

Heavy-duty pressure switch has been selected to conform to rigid specifications for precision, no-drift operation. Standard features include straight through wiring, rustproof cover and simple adjustment.

DIFFUSERS:

The unique diffuser is case iron accurately-engineered, smooth water passages for peak efficiency and economy in operation

IMPELLERS:

Closed impellers design. Impellers are brass or molded NORYL® for peak efficiency. This design assures smooth performance.

MECHANICAL SEALS:

Carbon/ceramic faces, Buna elastomers, and 300 series stainless steel.

ELECTRIC MOTORS:

NEMA “J” standard single phase, ½ to 1½ HP are dual voltage with voltage change switch, 2 HP are 230V, 3500RPM, 60Hz, capacitor start, dual ball bearings, and built-in overload with automatic reset.

REGULATING VALVE:

Efficient heavy-duty regulator, adjustable to varying pumping conditions. Regulators are not required on shallow well application

GASKETS:

All pumps feature the proper gaskets for better sealing and simplified maintenance.

PERFORMANCE RATINGS

DEEP WELL

4" DUAL PIPE JETS - 1 1/4" SUCTION - 1" DISCHARGE

MODEL #	PART #	HP	TUBE & NOZZLE NUMBER	DEPTH TO WATER - Feet															
				30	40	50	60	70	80	90	100	110	120	130	140	180	200		
				CAPACITY - U.S. GALLONS PER HOUR															
MSV75	JMSVO754-110C	3/4	80160	900	800	720													
MSV75B	JMSV0755-110C		80130	630	630	630	630	590	502	447	368								
			80110	360	360	360	360	360	360	360	360	311	200	175	128				
MSV100	JMSV1004-110C	1	80130	670	670	670	670	590	510	447	382								
MSV100B	JMSV1005-110C		80110	400	400	400	400	400	400	400	400	360	232	208	195				
MSV150	JMSV1504-110C	1 1/2	80190	1690	1420	1150													
MSV150B	JMSV1505-110C		80150	720	720	720	720	720	717	661	606								
			80110	480	480	480	480	480	480	480	480	400	390	390	380	290	210		
MSV200	JMSV2004-120C	2	80210	1690	1400	1260													
MSV200B	JMSV2005-120C		80150	730	730	730	730	730	720	700	670	660							
			80110	480	480	480	480	480	480	480	480	480	460	400	390	360	320		

2" SINGLE PIPE JETS - 1 1/4" SUCTION

MODEL #	PART #	HP	TUBE & NOZZLE NUMBER	DEPTH TO WATER - Feet															
				30	40	50	60	70	80	90	100	110	120	130	140	180	200		
				CAPACITY - U.S. GALLONS PER HOUR															
MSV75	JMSV0754-110C	3/4	80130	600	600	600	560	540	430	380									
MSV75B	JMSV0755-110C		80110	330	330	330	300	290	230	180	120	110	290	270	140				
MSV100	JMSV1004-110C	1	80130	630	630	630	600	580	460	390	300								
MSV100B	JMSV1005-110C		80110	360	360	360	360	360	360	360	360	320	310	290	270	140			
MSV150	JMSV1504-110C	1 1/2	80130	710	710	710	710	710	690	600	590								
MSV150B	JMSV1505-110C		80110	420	420	420	420	420	420	420	420	380	330	320	290	260	240		
MSV200	JMSV2004-120C	2	80130	720	720	720	720	720	710	700	630	630	580	460	390	210			
MSV200B	JMSV2005-120C		80110	430	430	430	430	430	430	430	420	420	410	390	370	330	300	280	

Specifications are subject to change without notice.

SF50SNH SERIES: BOOSTER JET PUMP

SF50SNH Series pumps are designed to pump at high pressure. Rugged cast iron construction with bolt-on ejector. Drain plugs are bottom located. Ratings are within the electric motor capabilities. The bolt-on adapter is provided with a clean out port to simplify service. This pump is suited for use as a booster, in homes or farms.



QUALITY FEATURES

ELECTRIC MOTORS:

NEMA standard 1/2 HP, single phase, 3500RPM, 60Hz, Capacitor Start, dual ball bearings, with automatic reset overload protection. Motors are dual voltage with voltage change switch. Square flange motors provide for simple back pull out for service without disturbing pipe connections.

IMPELLERS:

Closed impeller design of NORYL[®] GE.TM for peak efficiency. This design assures smooth performance.

MECHANICAL SEALS:

Carbon/Ceramic faces, Buna elastomers, and 300 series stainless steel. Optional seals are available.

GASKETS:

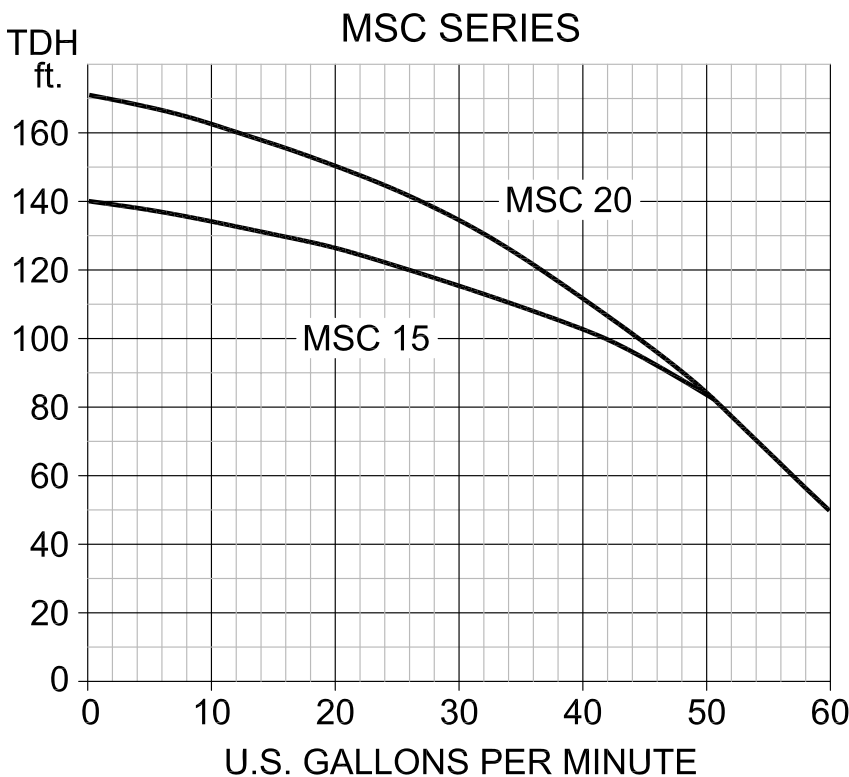
All pumps feature the proper gaskets for better sealing and simplified maintenance.

PERFORMANCE RATINGS

MODEL #	PART #	HP	SINGLE PHASE VOLTS	NPT INCH		TUBE & NOZZLE NUMBER	DEPTH TO WATER Feet	DISCHARGE PRESSURE PSI					SHUT OFF	WEIGHT LBS.
				SUCT.	DISC.			10	20	30	40	50		
								CAPACITY - U.S. GALLONS PER HOUR						
SF50SNH	JSNH0504-1105	1/2	115/230	1 1/4	3/4	SW80110	5	372	366	354	348	330	86	50
							10	324	318	312	300	276	84	
							15	288	282	276	276	270	82	
							20	228	222	216	216	216	80	
							25	150	150	150	150	150	78	

MSC SERIES: MULTI-STAGE CENTRIFUGALS

MSC Series are made of rugged cast iron for years of trouble free service. Precision impeller diffuser design insures perfect alignment and reliable performance. The closed impellers are most suited for this type of pump. Pumps are available in single or three phase.



QUALITY FEATURES

ELECTRIC MOTORS:

NEMA "J", 3500RPM, 60Hz, dual ball bearings. Single phase or three phase. Single phase are capacitor start, dual voltage with voltage change switch for 1/2 HP and 230 Volts for 2 HP.

IMPELLERS:

Closed impeller design of NORYL® GE. TM for peak efficiency. This design assures smooth performance.

MECHANICAL SEALS:

Carbon/Ceramic faces, Buna elastomers, and 300 series stainless steel. Optional seals are available.

PERFORMANCE RATINGS

MODEL #	PART #	HP	VOLTS	PHASE	NPT INCH		DISC. HEAD		SUCTION LIFT IN FEET					WEIGHT LBS.	
					SUCT.	DISC.	PSI	FEET	5	10	15	20	25		
									CAPACITY - U.S. GALLONS PER MINUTE						
2 STAGES															
MSC 15	CMS15004-110C	1 1/2	230/115 230/460	1	1 1/4	1	20	46	62	62	62	62	53	83	
MSC153	CMS15004-320C						30	69	55	55	55	53	50		
							40	92	46	46	45	40	35		
							50	115	31	30	21				
3 STAGES															
MSC 20	CMS20004-120C	2	230 230/460	1	1 1/4	1	20	46	55	58	52	58	50	86	
MSC 203	CMS20004-320C						30	69	55	55	55	55	50		
							40	92	46	46	46	46	46		
							50	115	40	40	39	39	36		
							60	138	28	28	28	23	20		

MSC Series are available with pressure switch, consult factory.

Specifications are subject to change without notice.

BOOSTER PUMPS: BF5000 - BF8000 - BF12000 BF18K11 AND BF25M10



PERFORMANCE RATINGS:

Model BF5000:

Adds 100 PSI to intake pressure at 5 GPM
 Adds 120 PSI to intake pressure at 3 GPM

Model BF8000:

Adds 100 PSI to intake pressure at 8 GPM
 Adds 120 PSI to intake pressure at 6 GPM

Model BF12000:

Adds 100 PSI to intake pressure at 12 GPM
 Adds 120 PSI to intake pressure at 10 GPM

Model BF18K11:

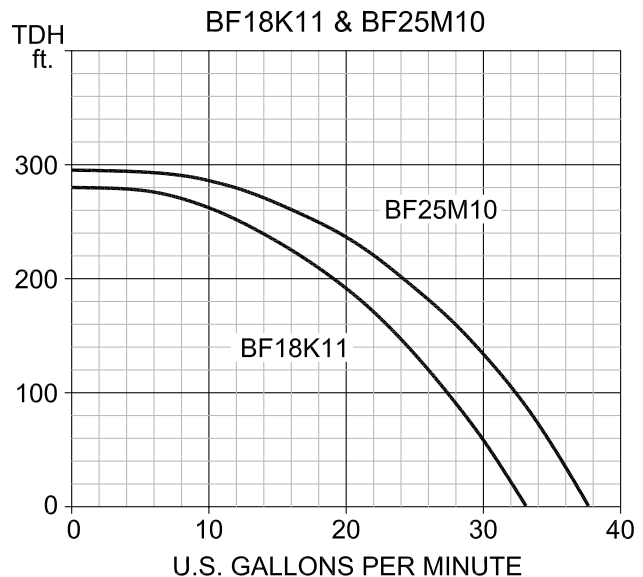
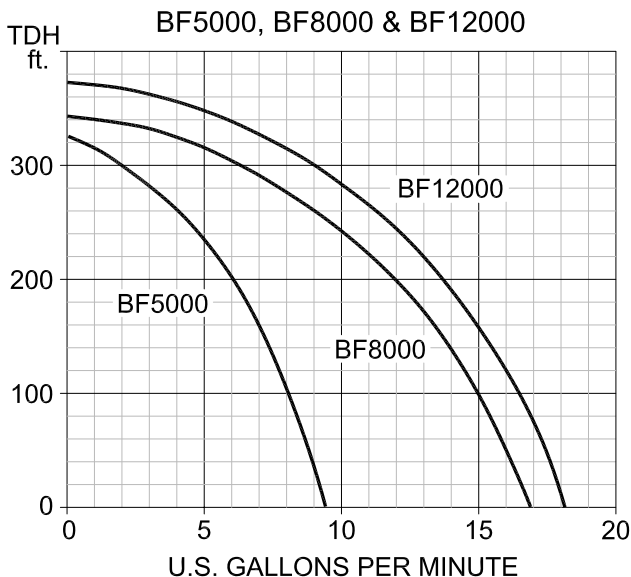
Adds 50 PSI to intake pressure at 26 GPM
 Adds 100 PSI to intake pressure at 15 GPM

Model BF25M10:

Adds 50 PSI to intake pressure at 31 GPM
 Adds 100 PSI to intake pressure at 20 GPM

QUALITY FEATURES

- Cast handle for easy mobility
- Stainless steel shaft
- Stainless steel wear rings
- Self-lubricating alignment bearings
- Locked staging for extra long life
- Heavy duty 56 frame motor designed for continuous operation
- High pressure seal
- O'ring construction for positive sealing
- Heavy duty bronze self-aligning shaft adapter
- Heavy duty cast iron suction and discharge housing
- Especially designed for hot and humid working conditions

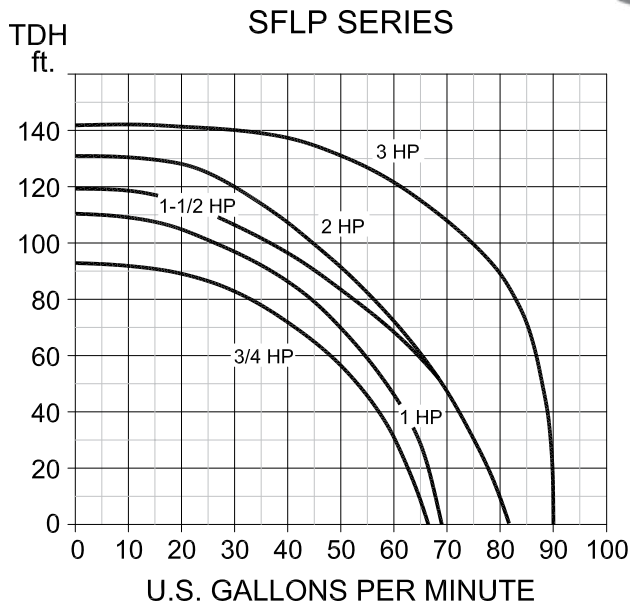


GENERAL INFORMATION						
MODEL	PART NO.	HP	SINGLE PHASE VOLTS	NPT INCH		WEIGHT LBS.
				SUCT.	DISC.	
BF5000	BFC05P14-110C	1/2	115/230	3/4	1 1/4	38
BF8000	BFC08C14-110C	3/4	230/115	3/4	1 1/4	40
BF12000	BFC12J14-110C	1	230/115	3/4	1 1/4	42

GENERAL INFORMATION						
MODEL	PART NO.	HP	SINGLE PHASE VOLTS	NPT INCH		WEIGHT LBS.
				SUCT.	DISC.	
BF18K11	BFC18K11-110C	1	115/230	1	1 1/4	40
BF25M10	BFC25M10-110C	1 1/2	115/230	1	1 1/4	43

Specifications are subject to change without notice.

SFLP SERIES: SELF-PRIMING LAWN SPRINKLER 3/4 - 3 HP SINGLE OR THREE PHASE



QUALITY FEATURES

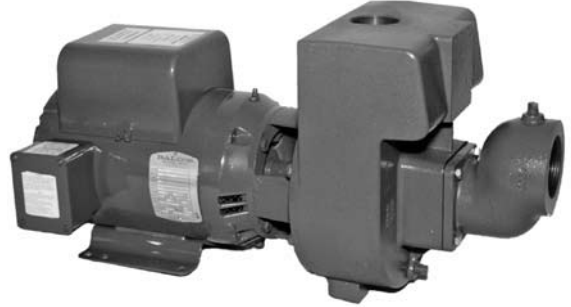
- High capacity, high volume
- Cast iron pump body and mounting ring for long life
- Noryl or bronze impeller through 2 HP
- NEMA J, capacitor start, double ball bearing motors for continuous operation
- 3/4, 1, 1 1/2, 2 and 3 HP sizes, with single or three phase options
- Easy access drain plug
- Designed for lawn sprinkling, irrigation and more
- Rapid self-priming characteristics under maximum suction conditions

SPECIFICATIONS															
MODEL #	PART #	HP	SINGLE PHASE VOLTS	NPT INCH		SUCTION LIFT FEET	DISCHARGE PRESSURE PSI						SHUT OFF PSI	WEIGHT LBS.	
				SUCT.	DISC.		20	25	30	35	40	45			
CAPACITY - U.S. GALLONS PER MINUTE															
SFLP75	CSF07504-110S	3/4	230/115	2	1 1/2	5	54	49	40	28			40	59	
						10	50	47	36	23			38		
						15	46	43	31				36		
						20	38	37	20				33		
						25	30	30					31		
SFLP100	CSF10004-110S	1	230/115	2	1 1/2	5	59	56	49	40	31		47	63	
						10	53	55	47	38	26		45		
						15	45	50	42	30	15		43		
						20	42	46	37	18			39		
						25	28	42	28				36		
SFLP150	CSF15004-110S	1 1/2	230/115	2	1 1/2	5	69	70	62	56	47	39	14	51	66
						10	67	69	60	55	46	38	13	49	
						15	60	58	51	42	30	10	47		
						20	49	50	46	35	20		44		
						25	44	44	39	30			41		
SFLP200	CSF20004-120S	2	230	2	1 1/2	5	72	72	65	60	54	46	37	57	72
						10	68	70	63	59	50	42	32	54	
						15	60	60	56	47	38	26	52		
						20	49	55	50	42	35	22	50		
						25	46	46	44	38	30		47		
SFLP300	CSF30004-120S NORYL IMPELLER	3	230	2	1 1/2	5	87	87	86	85	84	77	70	62	72
						10	86	86	85	84	77	70	60		
						15	84	83	81	80	75	68	58		
						20	72	71	70	69	68	61	56		
						25	56	55	53	52	51	50	53		

Specifications are subject to change without notice.

BMLS 3 & 5 HP: HIGH & MEDIUM SELF-PRIMING CENTRIFUGALS

One of the fastest self-priming pumps on the market. Available in high and medium head, they feature leak-proof mechanical seals, easy service design, heavy duty motors and rugged construction. They are specially suited for lawn sprinkling applications. The 3 & 5 HP feature a brass impeller and air volume control tapping, and include suction flange with flapper valve.



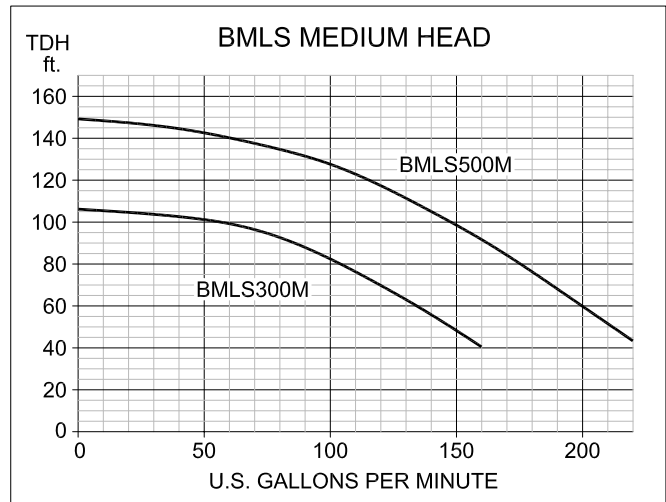
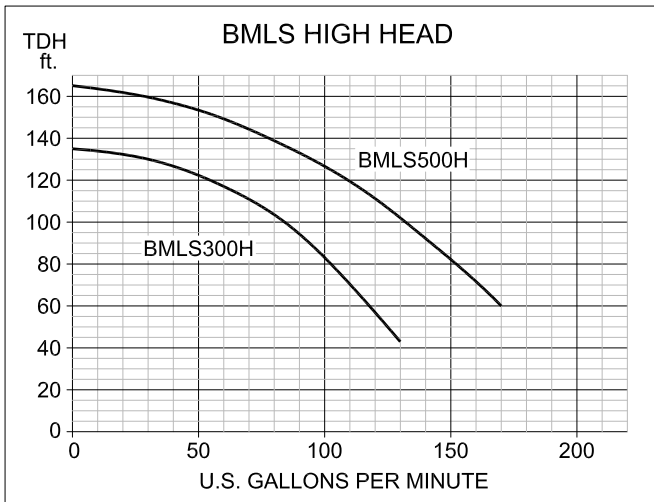
QUALITY FEATURES

ELECTRIC MOTORS:

All motors are NEMA "J", 3500RPM, 60Hz, dual ball bearings. Single phase or three phase. Single phase are capacitor start, 230 volts. Three phase are 230/460 volts.

MECHANICAL SEALS:

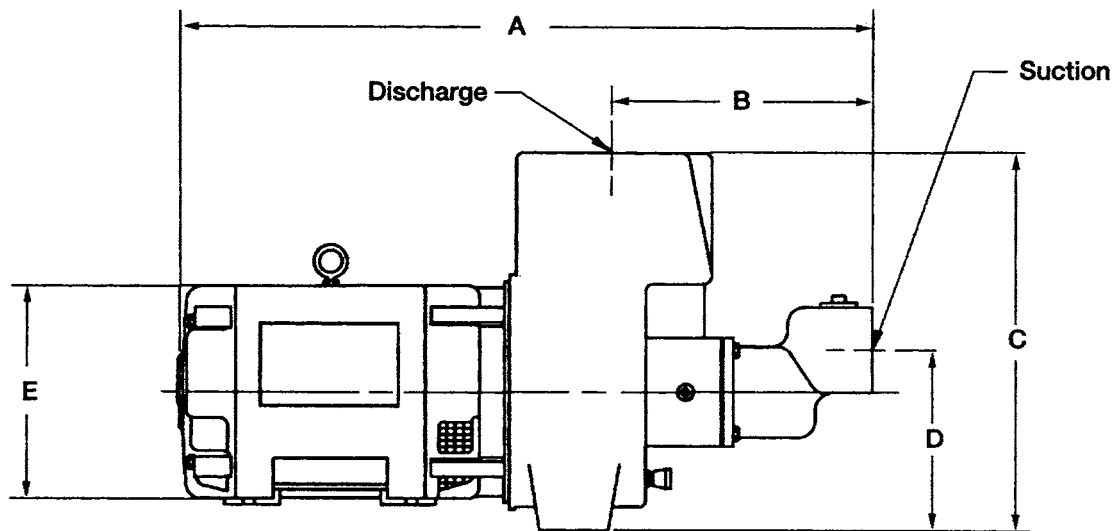
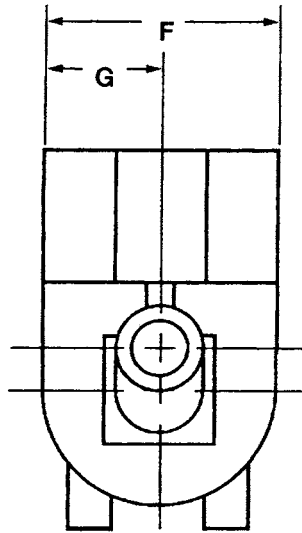
Carbon/Ceramic faces, Buna elastomers, and 300 series stainless steel. Optional seals are available.



PERFORMANCE RATINGS

MODEL #	PART #	HP	VOLTS	PHASE	NPT INCH		DISCHARGE HEAD		SUCTION LIFT IN FEET					WEIGHT LBS.
							PSI	FEET	5	10	15	20	25	
									CAPACITY - U.S. GALLONS PER MINUTE					
BMLS-300H BMLS-300H-3	CBM300H5-120J CBM300H5-330J	3	230 230/460	1 3	2	1 1/2	20	46	123	120	108	98	70	144
							30	69	108	105	98	94	68	
							40	92	87	82	76	70	62	
							50	115	60	52	44	33	18	
							60	138	40	30	20	15	10	
BMLS-500H BMLS-500H-3	CBM500H5-120J CBM500H5-330J	5	230 230/460	1 3	2 1/2	2	20	46	162	160	151	140	98	182
							30	69	160	158	150	136	98	
							40	92	146	141	136	130	96	
							50	115	118	115	104	94	94	
							60	138	80	71	54	28	20	
BMLS-300M BMLS-300M-3	CBM300M5-120J CBM300M5-330J	3	230 230/460	1 3	2 1/2	2	20	46	156	150	140	135	100	144
							30	69	124	116	108	99	91	
							40	92	84	76	40	30	30	
							50	115	60	52	44	33	18	
							60	138	40	30	20	15	10	
BMLS-500M BMLS-500M-3	CBM500M5-120J CBM500M5-330J	5	230 230/460	1 3	3	2 1/2	20	46	218	212	206	198	172	182
							30	69	190	182	176	170	160	
							40	92	160	148	140	136	126	
							50	115	118	116	90	72	36	
							60	138	80	71	54	28	20	

BMLS 3 & 5 HP: HIGH & MEDIUM SELF-PRIMING CENTRIFUGALS



DIMENSIONAL INFORMATION													
PART #	HP	VOLTAGE	PHASE	SUCT.	DISC.	A	B	C	D	E	F	G	WEIGHT LBS.
CBM300H5-120J	3	230	1	2	1 1/2	25.50	7.44	13.25	6.50	9.38	9.25	4.75	144
CBM300H5-330J	3	208-230/460	3	2	1 1/2	23.50	7.44	13.25	6.69	7.19	9.25	4.75	144
CBM500H5-120J	5	230	1	2 1/2	2	27.25	8.44	13.25	7.44	8.56	9.25	4.75	182
CBM500H5-330J	5	208-230/460	3	2 1/2	2	25.75	8.44	13.25	7.44	9.38	9.25	4.75	182
CBM300M5-120J	3	230	1	2 1/2	2	26.50	8.44	13.25	7.44	9.38	9.25	4.75	144
CBM300M5-330J	3	208-230/460	3	2 1/2	2	24.50	8.44	13.25	7.44	7.19	9.25	4.75	144
CBM500M5-120J	5	230	1	3	2 1/2	27.25	8.44	13.25	7.44	8.56	9.25	4.75	182
CBM500M5-330J	5	208-230/460	3	3	2 1/2	25.75	8.44	13.25	7.44	9.38	9.25	4.75	182

EC SERIES CENTRIFUGAL PUMPS

EC Series end suction centrifugal pumps are ideal for many applications. Our pumps feature closed impellers designed for vertical or horizontal installation. 4 position discharge with drain plug. Pumps are available in 1/2 thru 3 HP models.

Rugged cast iron pump and back plate close coupled to square flange motor.



QUALITY FEATURES

ELECTRIC MOTORS:

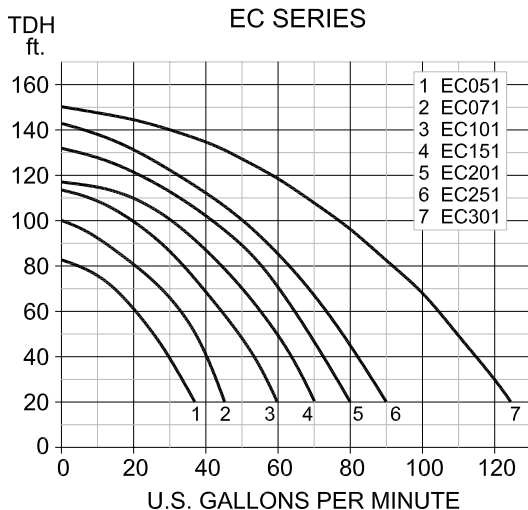
NEMA Standard, 3500RPM, 60Hz, Capacitor Start, dual ball bearings, with automatic reset overload protection. Motors 1/2 thru 1 1/2 HP are dual voltage with voltage change switch. 2 HP and up are 230 volts. Square flange motors provide for simple back pull out for service without disturbing pipe connections.

IMPELLERS:

Closed impeller design of NORYL® GE.TM for peak efficiency. This design assures smooth performance.

MECHANICAL SEALS:

Carbon/Ceramic faces, Buna elastomers, and 300 series stainless steel. Optional seals are available.



PERFORMANCE RATINGS

MODEL #	PART #	HP	SINGLE PHASE VOLTS	NPT INCH		WEIGHT LBS.
				SUCT.	DISC.	
EC-051	CEC05004-110S	1/2	115/230	1 1/4	1	35
EC-071	CEC07504-110S	3/4	230/115	1 1/4	1	46
EC-101*	CEC10004-110S	1	230/115	1 1/4	1	47
EC-151*	CEC15004-110S	1 1/2	230/115	1 1/4	1	52
EC-201	CEC20004-120S	2	230	1 1/2	1 1/4	54
EC-251	CEC25004-120S	2 1/2	230	2	1 1/2	55
EC-301	CEC30004-120S	3	230	2	1 1/2	58

* Available in 1-1/2" / 1-1/4". Please specify
All models are available in 3 phase - specify voltage

Creating Quality Pump Systems and Satisfied Customers

Visit us on the web at: www.nationalpumpcompany.com



Delivering Pump and Pump Systems
Reliability, Dependability
and Service Since 1969

motralec

4 rue Lavoisier . ZA Lavoisier . 95223 HERBLAY CEDEX

Tel. : 01.39.97.65.10 / Fax. : 01.39.97.68.48

Demande de prix / e-mail : service-commercial@motralec.com

www.motralec.com