



**motralec**

4 rue Lavoisier . ZA Lavoisier . 95223 HERBLAY CEDEX

Tel. : 01.39.97.65.10 / Fax. : 01.39.97.68.48

Demande de prix / e-mail : [service-commercial@motralec.com](mailto:service-commercial@motralec.com)

[www.motralec.com](http://www.motralec.com)

## Petroleum Pumps:

Bio-diesel

Fuel Oil

Kerosene

Aviation Gasoline

Diesel

Jet A / JP-8

Gasoline

Ethanol

E 85

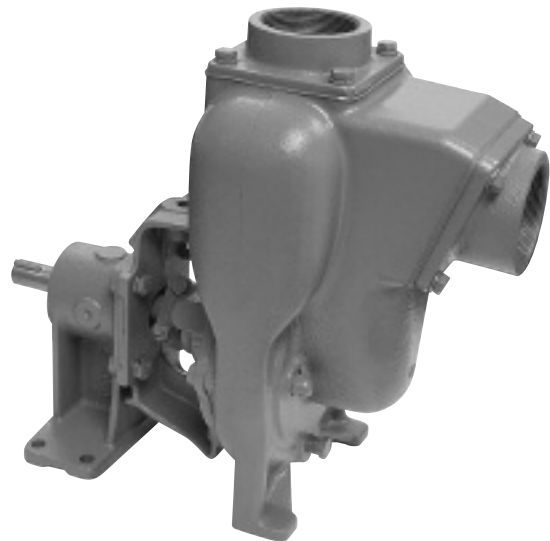
MEMBER  
**PEI**  
PETROLEUM EQUIPMENT INSTITUTE

**MP PUMPS, INC.**

# Model PG Pumps Compatible For Gasoline, Kerosene, Avgas & Jet Fuel



The "PG" model is available in Pedestal mount for flexible coupling or Close Coupled mount to C Face Class I Group D Explosion Proof electric motors. Ductile Iron is the standard construction for the volute and adapter. The open impeller is standard in cast iron construction with aluminum as an optional material. Standard material for the wear plate is aluminum. The standard self-lubricated Type 2 mechanical seal is equipped with a carbon rotating face, viton elastomer and stainless steel spring. The stationary face is silicon carbide.

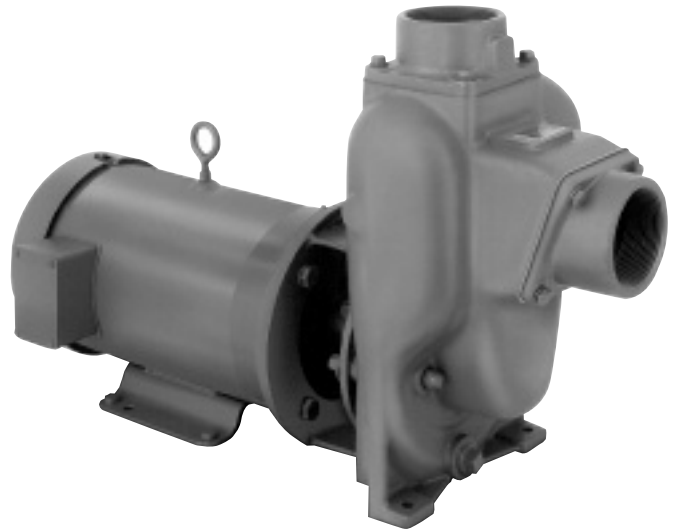


MODEL	SIZE	MOUNTING	STANDARD MATERIALS OF CONSTRUCTION					OPTIONAL MATERIALS		
			VOLUTE	IMPELLER	WEAR PLATE	GASKET	SEAL	VOLUTE	IMPELLER	WEAR PLATE
PG 8	2" X 2"	Explosion Proof	Ductile Iron	Cast Iron	Aluminum	Cork/Nitrile	Type 2 Viton/Carbon/ Sil.Car./SS	<b>C O N S U L T  F A C T O R Y</b>	Aluminum	<b>C O N S U L T  F A C T O R Y</b>
PG 8	2" X 2"	Pedestal	Ductile Iron	Cast Iron	Aluminum	Cork/Nitrile	Type 2 Viton/Carbon/ Sil.Car./SS		Aluminum	
PG 10	2" X 2"	Explosion Proof	Ductile Iron	Cast Iron	Aluminum	Cork/Nitrile	Type 2 Viton/Carbon/ Sil.Car./SS		Aluminum	
PG 15	3" X 3"	Explosion Proof	Ductile Iron	Cast Iron	Aluminum	Cork/Nitrile	Type 2 Viton/Carbon/ Sil.Car./SS		Aluminum	
PG 15	3" X 3"	Pedestal	Ductile Iron	Cast Iron	Aluminum	Cork/Nitrile	Type 2 Viton/Carbon/ Sil.Car./SS		Aluminum	
PG 30	3" X 3"	Pedestal	Ductile Iron	Cast Iron	Aluminum	Cork/Nitrile	Type 2 Viton/Carbon/ Sil.Car./SS		Aluminum	
PG 40	4" X 4"	Pedestal	Ductile Iron	Cast Iron	Aluminum	Cork/Nitrile	Type 2 Viton/Carbon/ Sil.Car./SS		Aluminum	

# Model PO Pumps Compatible For BioDiesel, Fuel Oil & Diesel



The "PO" model mounting offerings for fuel oil and diesel fuel applications include both Pedestal mount for flexible coupling and Close Coupled mount to C Face, TEFC electric motors. Cast Iron is the standard construction for the volute, adapter and open impeller. Standard material for the wear plate is steel. The volute is also available in ductile iron. The standard self-lubricated Type 21 mechanical seal is equipped with a carbon rotating face, viton elastomer and stainless steel spring. The stationary face is Ni-Resist.



MODEL	SIZE	MOUNTING	STANDARD MATERIALS OF CONSTRUCTION					OPTIONAL MATERIALS		
			VOLUTE	IMPELLER	WEAR PLATE	GASKET	SEAL	VOLUTE	IMPELLER	WEAR PLATE
PO 8	2" X 2"	TEFC	Cast Iron	Cast Iron	Steel	Cork/Nitrile	Type 21 Viton/Carbon/ NiResist/SS	Ductile Iron	<b>C O N S U L T  F A C T O R Y</b>	<b>C O N S U L T  F A C T O R Y</b>
PO 8	2" X 2"	Pedestal	Cast Iron	Cast Iron	Steel	Cork/Nitrile	Type 21 Viton/Carbon/ NiResist/SS	Ductile Iron		
PO 10	2" X 2"	TEFC	Cast Iron	Cast Iron	Steel	Cork/Nitrile	Type 21 Viton/Carbon/ NiResist/SS	Ductile Iron		
PO 15	3" X 3"	TEFC	Cast Iron	Cast Iron	Steel	Cork/Nitrile	Type 21 Viton/Carbon/ NiResist/SS	Ductile Iron		
PO 15	3" X 3"	Pedestal	Cast Iron	Cast Iron	Steel	Cork/Nitrile	Type 21 Viton/Carbon/ NiResist/SS	Ductile Iron		
PO 30	3" X 3"	Pedestal	Cast Iron	Cast Iron	Steel	Cork/Nitrile	Type 21 Viton/Carbon/ NiResist/SS	Ductile Iron		
PO 40	4" X 4"	Pedestal	Cast Iron	Cast Iron	Steel	Cork/Nitrile	Type 21 Viton/Carbon/ NiResist/SS	Ductile Iron		

# Model PE Pumps Compatible For Ethanol & E 85



The "PE" model is available in Pedestal mount for flexible coupling or Close Coupled mount to C Face Class I Group D Explosion Proof electric motors. Ductile Iron is the standard construction for the volute and adapter. The open impeller is standard in cast iron construction with 316 SS as an optional material. Standard material for the wear plate is steel. The standard self-lubricated Type 2 mechanical seal is equipped with a carbon rotating face, viton elastomer and stainless steel spring. The stationary face is silicon carbide.



MODEL	SIZE	MOUNTING	STANDARD MATERIALS OF CONSTRUCTION					OPTIONAL MATERIALS		
			VOLUTE	IMPELLER	WEAR PLATE	GASKET	SEAL	VOLUTE	IMPELLER	WEAR PLATE
PE 8	2" X 2"	Explosion Proof	Ductile Iron	Cast Iron	Steel	Cork/Nitrile	Type 2 Viton/Carbon/ Sil.Car./SS	<b>C O N S U L T  F A C T O R Y</b>	316 SS	<b>C O N S U L T  F A C T O R Y</b>
PE 8	2" X 2"	Pedestal	Ductile Iron	Cast Iron	Steel	Cork/Nitrile	Type 2 Viton/Carbon/ Sil.Car./SS		316 SS	
PE 10	2" X 2"	Explosion Proof	Ductile Iron	Cast Iron	Steel	Cork/Nitrile	Type 2 Viton/Carbon/ Sil.Car./SS		316 SS	
PE 15	3" X 3"	Explosion Proof	Ductile Iron	Cast Iron	Steel	Cork/Nitrile	Type 2 Viton/Carbon/ Sil.Car./SS		316 SS	
PE 15	3" X 3"	Pedestal	Ductile Iron	Cast Iron	Steel	Cork/Nitrile	Type 2 Viton/Carbon/ Sil.Car./SS		316 SS	
PE 30	3" X 3"	Pedestal	Ductile Iron	Cast Iron	Steel	Cork/Nitrile	Type 2 Viton/Carbon/ Sil.Car./SS		316 SS	
PE 40	4" X 4"	Pedesta	Ductile Iron	Cast Iron	Steel	Cork/Nitrile	Type 2 Viton/Carbon/ Sil.Car./SS		316 SS	

# MP Pumps

## Self Priming Petroleum Pumps

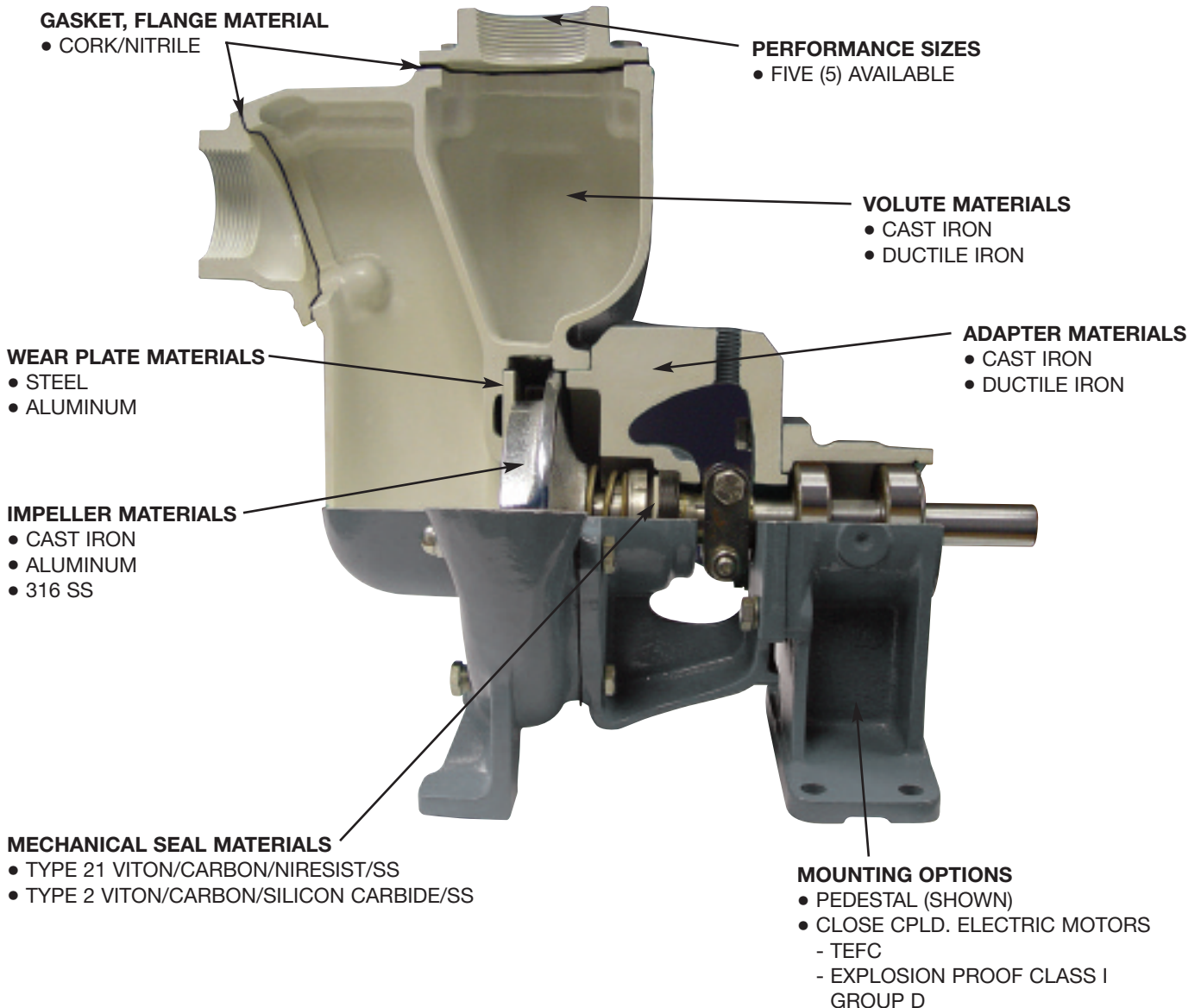
MP Pumps has specifically reengineered its popular Flomax® Self-Priming Series for compatibility with clean, non-abrasive petroleum products.

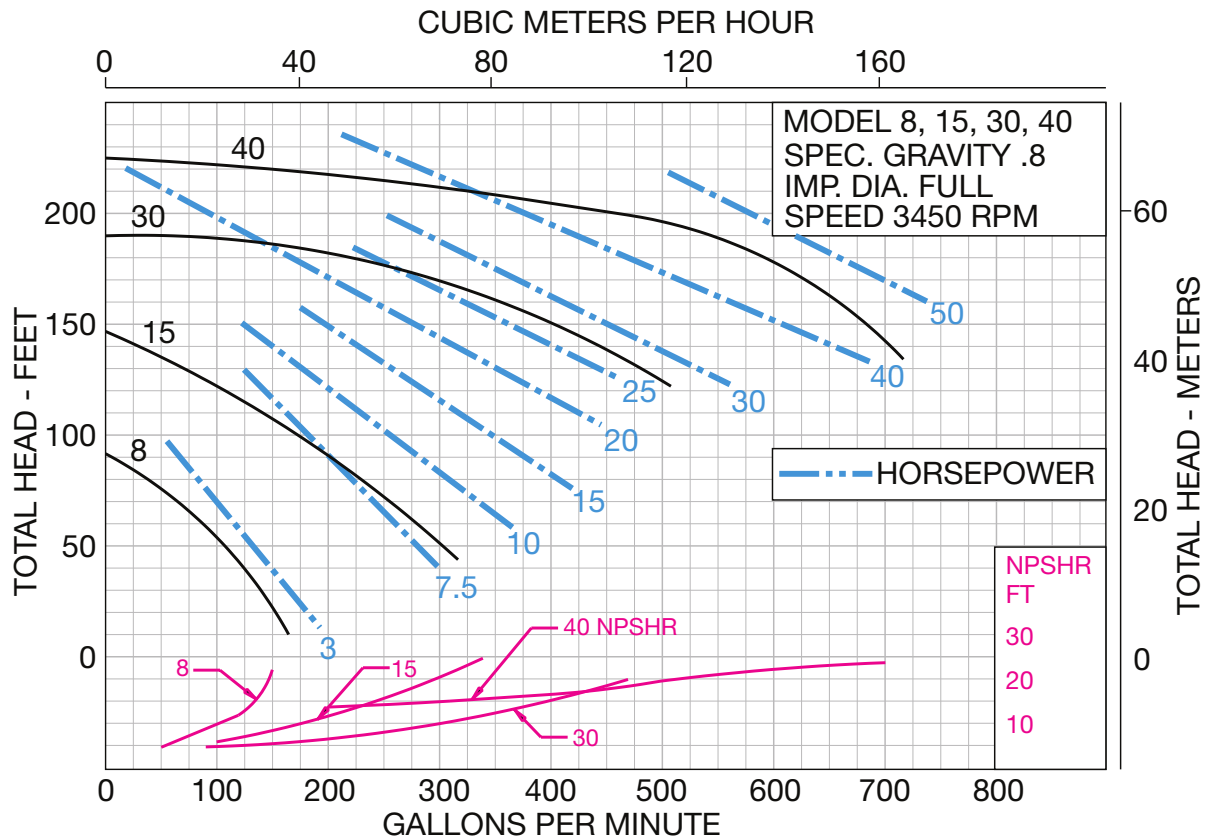
Transfer and delivery of various fuels such as gasoline, ethanol, biodiesel, and fuel oils are just a few of the petroleum based products the Flomax® Series is suitable for handling.

Long recognized as the leader in self-priming applications, the Flomax® Series addresses today's fuel market by offering:

- **Five (5) performance models.**
- **Various drive options.**
- **Specific mechanical seal offerings.**
- **Materials of construction compatible for three (3) distinct fuel classifications.**

By classifying various fuels into three (3) distinct segments, MP Pumps can recommend that its design is capable of handling the specific fuel groups without incurring the additional cost associated with “one pump for all fuels”.





CONSULT FACTORY FOR PERFORMANCE VARIATIONS.

