

MP PUMPS, INC.

HHLF "HR" HIGH HEAD

Self-Priming Centrifugal Pump

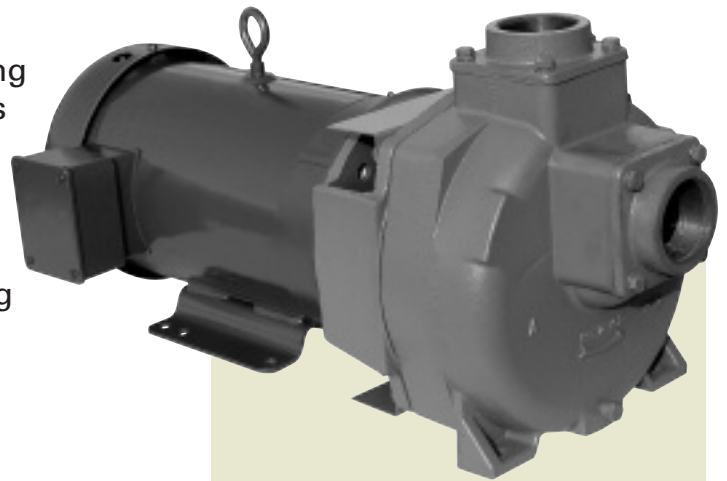


HHLF "HR" high pressure self-priming pumps meet USCG specifications for auxiliary fire control.

The high suction centerline and impeller design eliminates premature priming loss while ensuring consistent priming capability. The HHLF pump is capable of achieving up to 25 feet suction lift.

The HHLF series is available close coupled to NEMA "C" Face electric motors or as *pumpaks*. The engine drive models are capable of coupling to both gasoline and diesel engines with 1" keyed drive shafts. Pedestal mounted pumps are also available.

The volute and impeller are removable and easily replaced.



SPECIFICATIONS:

Suction and Discharge . . .	1 1/2" x 1 1/2" NPT 2" x 2" NPT
Housing	Cast Iron Class 30 or Silicon Bronze CA 875
Volute	Cast Iron Class 30 or Silicon Bronze CA 875
Impeller	Cast Iron Class 30 or Silicon Bronze CA 875
Adaptor	Cast Iron Class 30 or Silicon Bronze CA 875
Drive Sleeve	304 Stainless Steel
Seal, Type 21	Carbon/Ceramic/Viton Optional Seals Available
Fasteners	Stainless Steel

MOUNTING OPTIONS:

- Close Cpld to 182/184TC Motor Frame
- Pumpak
- Engine Drive
- Pedestal
- Hydraulic Drive

FLOWS TO 140 GPM

PRESSURES TO 190 TDH

APPLICATION:

- Marine
- Agricultural
- Industrial

ABS TYPE APPROVED

46 CFR COMPLIANT

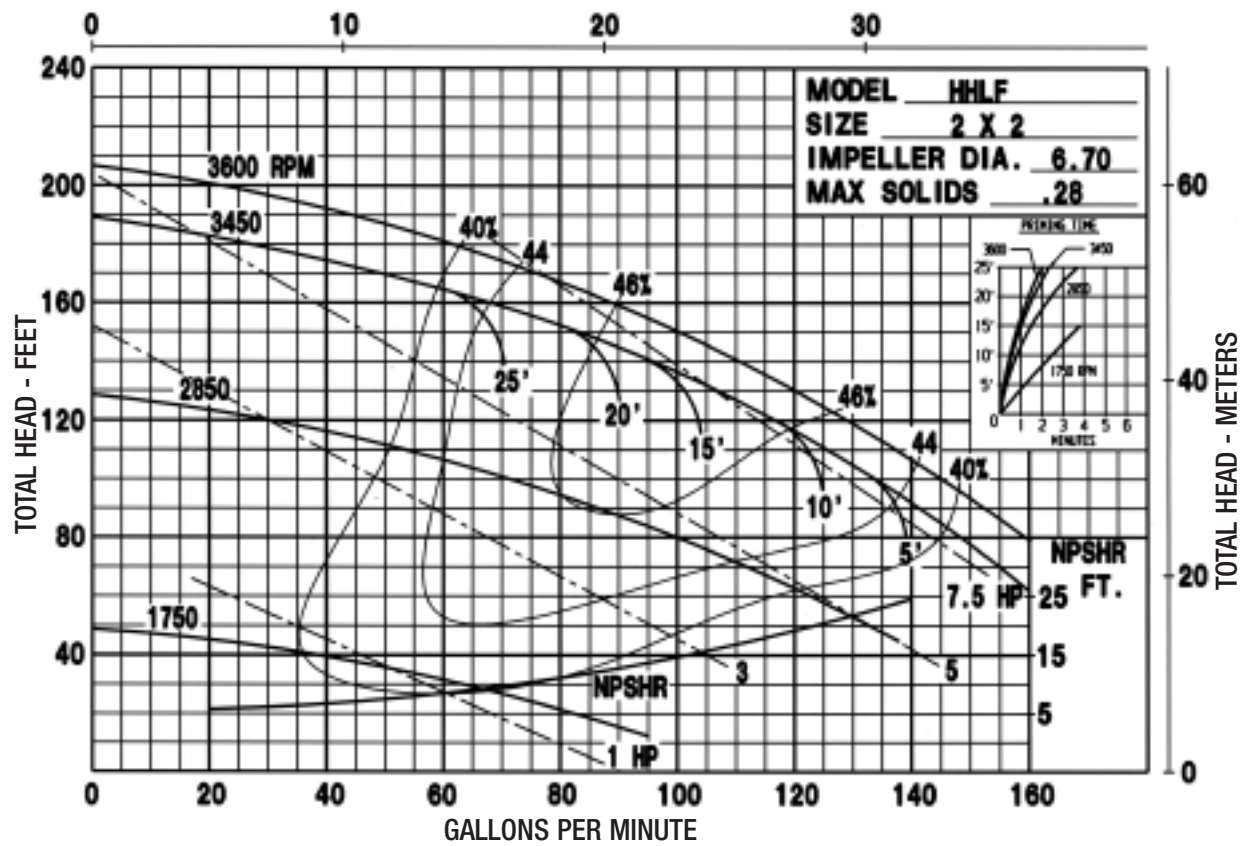
motralec

4 rue Lavoisier . ZA Lavoisier . 95223 HERBLAY CEDEX
Tel. : 01.39.97.65.10 / Fax. : 01.39.97.68.48
Demande de prix / e-mail : service-commercial@motralec.com

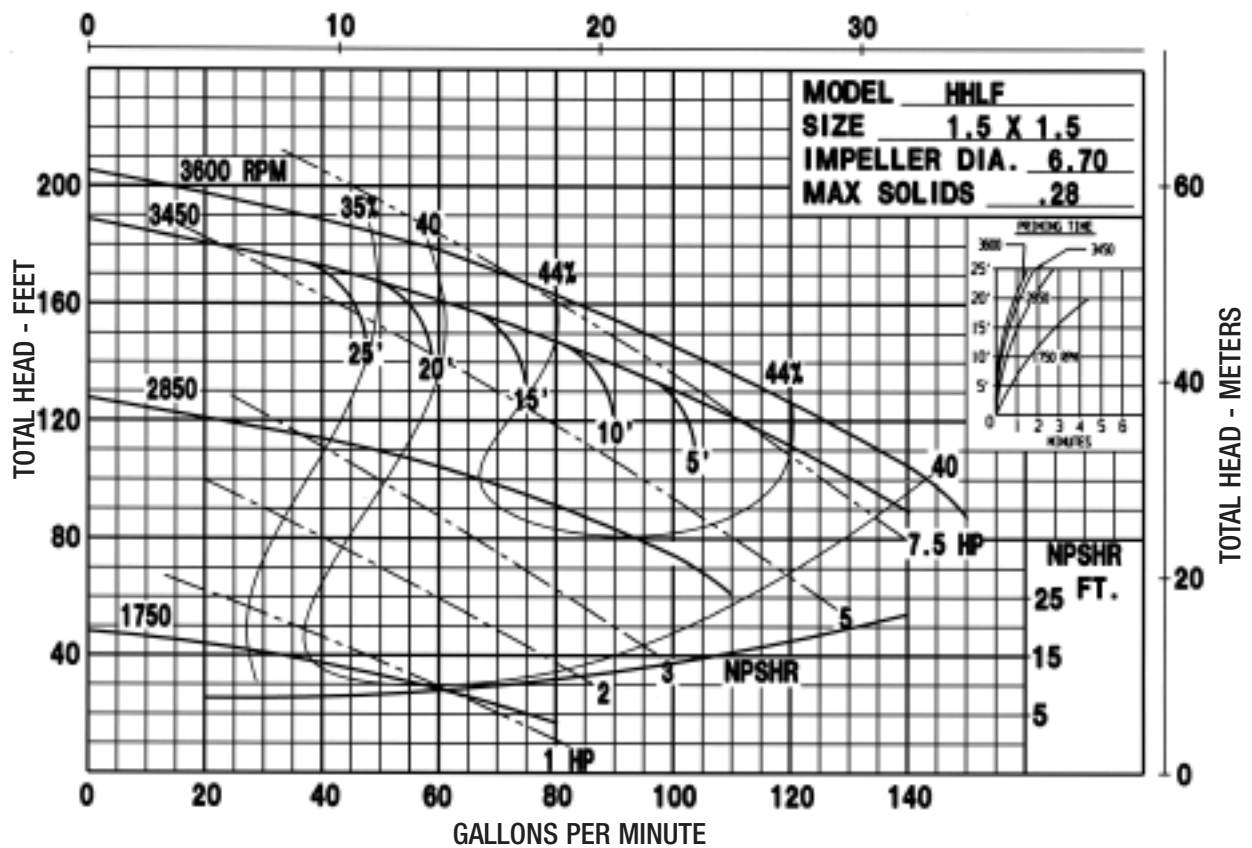
www.motralec.com

HHLF

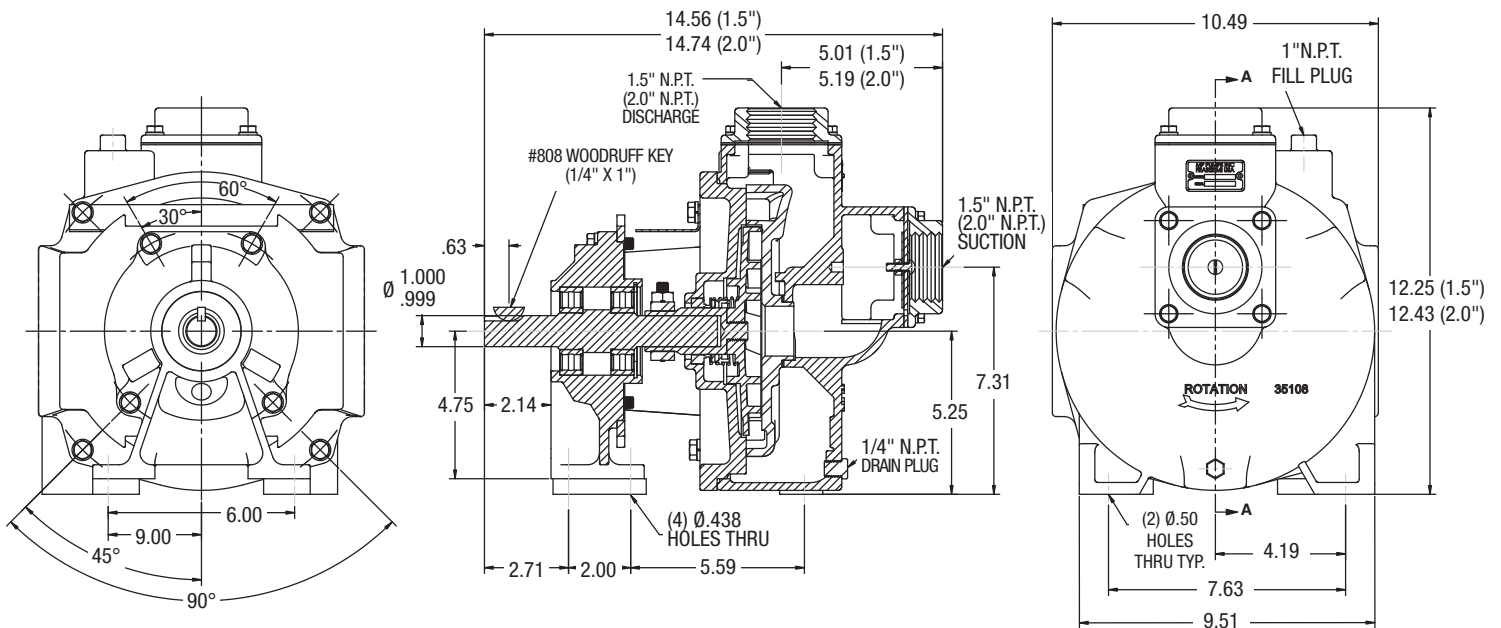
CUBIC METERS PER HOUR



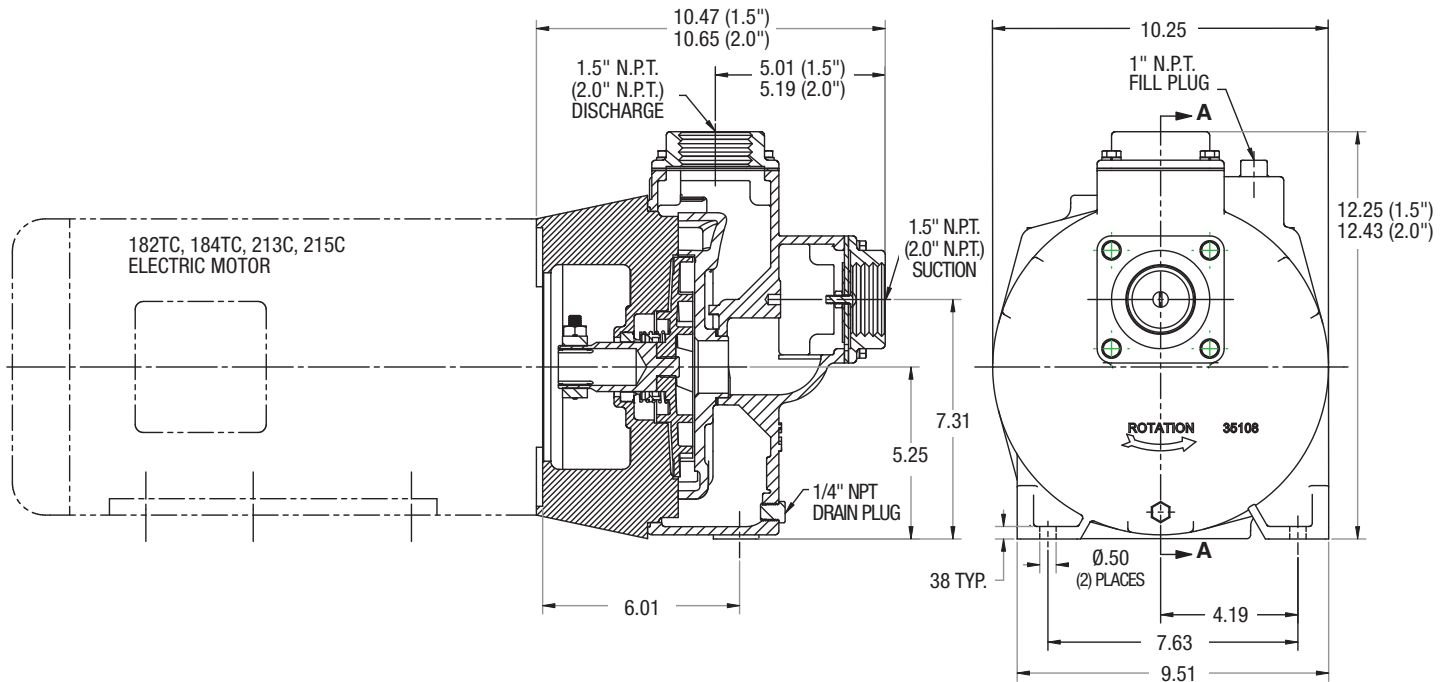
CUBIC METERS PER HOUR



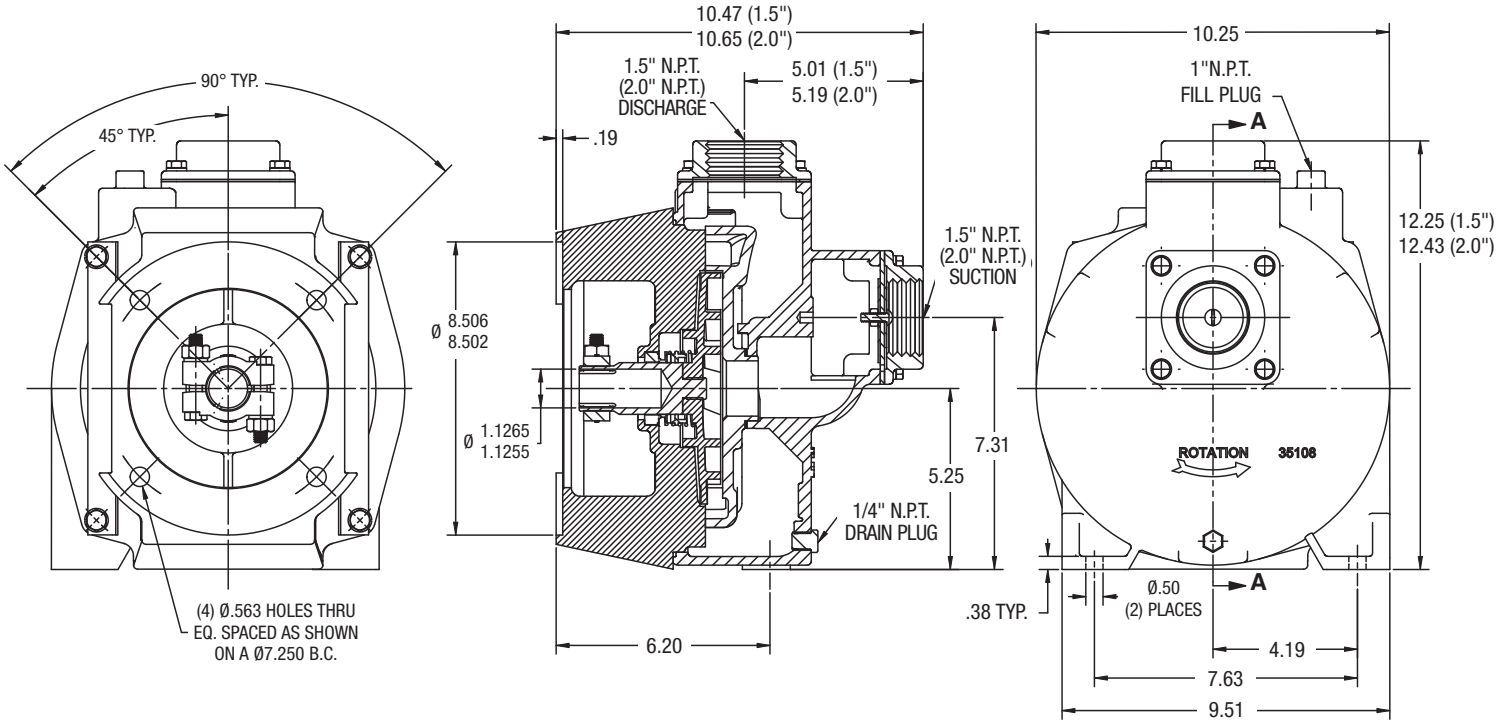
HHLF 1.5" (2.0") PEDESTAL PUMP



HHLF 1.5" (2.0") CLOSE COUPLED ELECTRIC MOTOR



HHLF 1.5" (2.0") CLOSE COUPLED MTR PUMPAK



HHLF 1.5" (2.0") ENGINE MOUNT PUMPAK

