



CENTRAC B PUMPS

motralec

4 rue Lavoisier . ZA Lavoisier . 95223 HERBLAY CEDEX
Tel. : 01.39.97.65.10 / Fax. : 01.39.97.68.48
Demande de prix / e-mail : service-commercial@motralec.com

www.motralec.com

GENERAL SPECIFICATIONS

Drive

Helical Gear and Scotch Yoke (all moving parts submerged in oil)

Liquid End

High Performance Diaphragm (hydraulically balanced)

Multiplexing

Simplex or Duplex

Maximum Performance Ratings (per head)

550 GPH @ 185 PSIG to 37 GPH @ 2350 PSIG

Capacity Control

(DC) Electronic Variable Speed Drive with 100:1 Turndown

(AC) Electronic Variable Frequency 10:1 Turndown

Maximum Stroking Speed

162 SPM

Accuracy

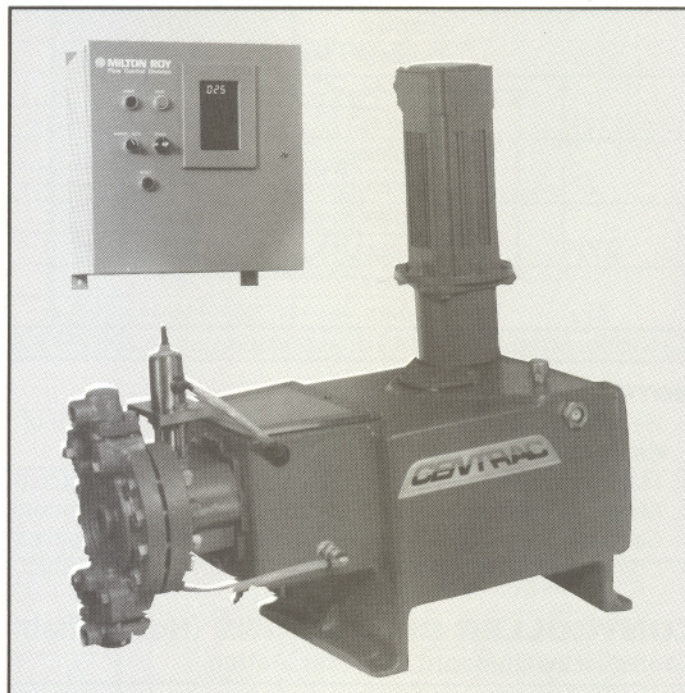
0.5% Steady State Accuracy Over 100:1 Turndown

Weight (approximate with largest liquid end)

Simplex 455 lbs.

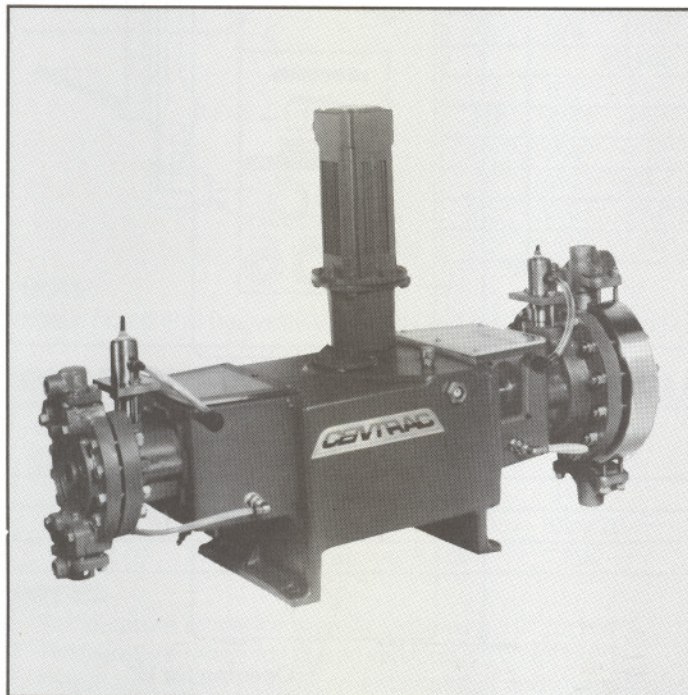
Duplex 640 lbs.

CENTRAC B SIMPLEX W/LOCAL OPERATOR STATION



CENTRAC B

CENTRAC B DUPLEX



MOTOR & CONTROLLER SPECIFICATIONS

Standard Voltages

Drive (DC) 230 VAC, 3 Phase, 50/60 Hz
230 VAC, 1 Phase, 50/60 Hz
(up to & including 2 HP)

Remote Operator Station .. 115/230 VAC, 1 Phase, 50/60 Hz

Maximum Distances

Controller to Motor 250 ft.

Remote Operator Station to Slave Controller 5000 ft.

Duty Cycle

Continuous

Input Control Signal

4-20 mA, Direct or Reverse Acting Standard,
Split Range Configurable

Feedback Signal

4-20 mA

Motor Description

Brushless DC TENV Watertight - Standard

Explosion Proof - Optional

Standard AC - Optional



CENTRAC B PERFORMANCE

Plunger Dia.		Maximum Capacity GPH	Motor Horsepower		
			1	2	3
			Maximum Discharge Pressure PSIG		
1"	Simplex	45	780	1575	2350
	Duplex	90	590	1180	1770
1¼"	Simplex	70	500	1000	1500
	Duplex	140	380	760	1140
1½"	Simplex	100	350	700	1050
	Duplex	200	260	525	785
2"	Simplex	180	200	400	600
	Duplex	360	145	295	440
2½"	Simplex	280	125	250	375
	Duplex	560	95	190	285
3½"	Simplex	550	60	125	185
	Duplex	1100	45	95	140

Capacities listed are for discharge pressures up to 200 PSIG. Capacity will decrease by 0.8% for each 100 PSIG over 200 PSIG.

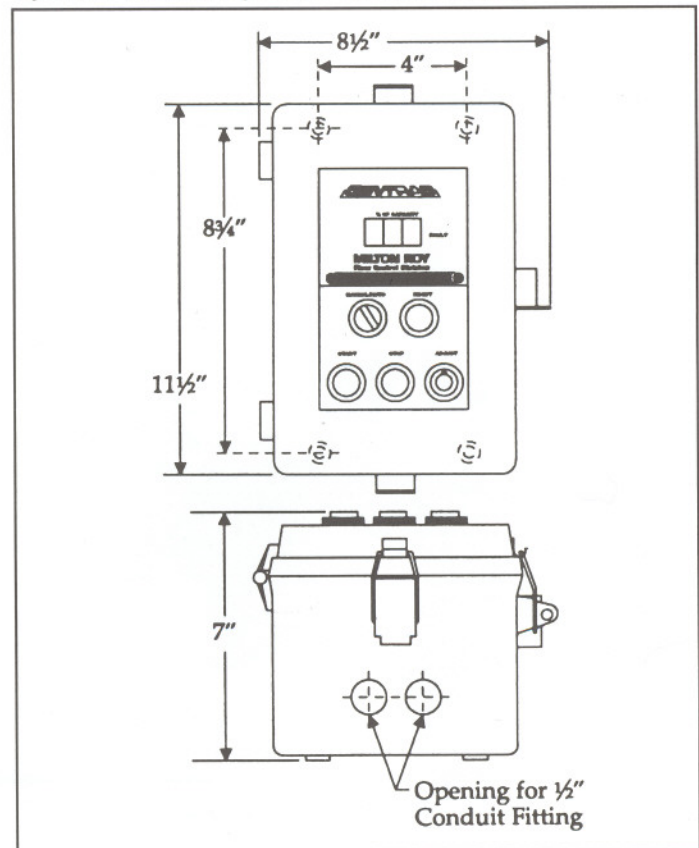
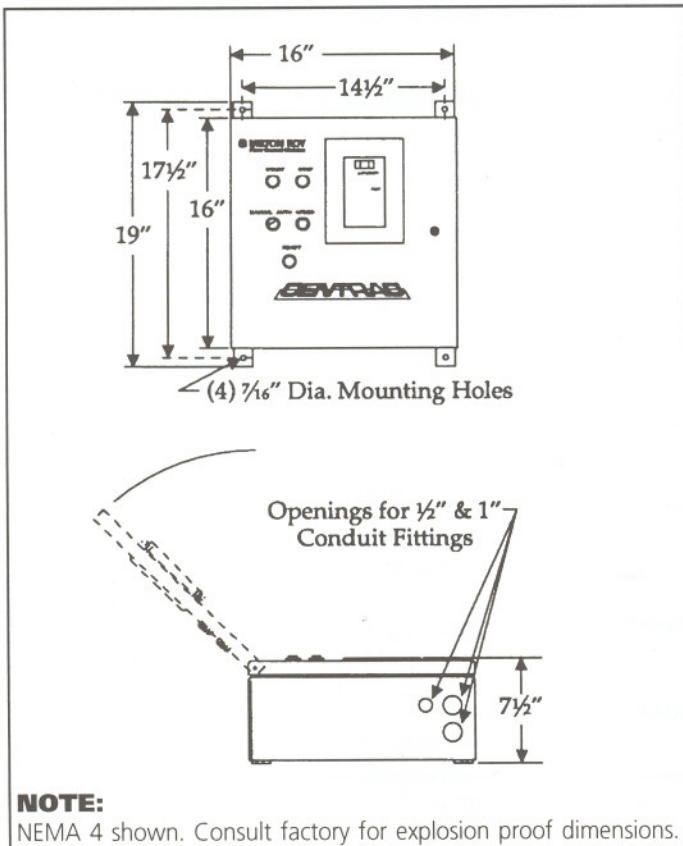
NOTES:

1. Plastic HPD liquid ends are limited to maximum pressure of 150 PSIG @ 68°F, and are linearly derated to 65 PSIG @ 140°F.
2. Capacity is shown at 162 SPM (100:1 turndown).
3. Maximum speed can be set below 162 SPM where required. Consult factory.
4. Minimum capacity is 1% (100:1 turndown) of actual maximum flow at full speed.
5. Centrac is only available with motor and controller supplied by Milton Roy.
6. Consult NPSH Handbook for proper design of suction lines.

CONTROLLER DIMENSIONS (Not available for use with AC motors)

Controller w/On-Board Operator Station

Optional Remote Operator Control Station

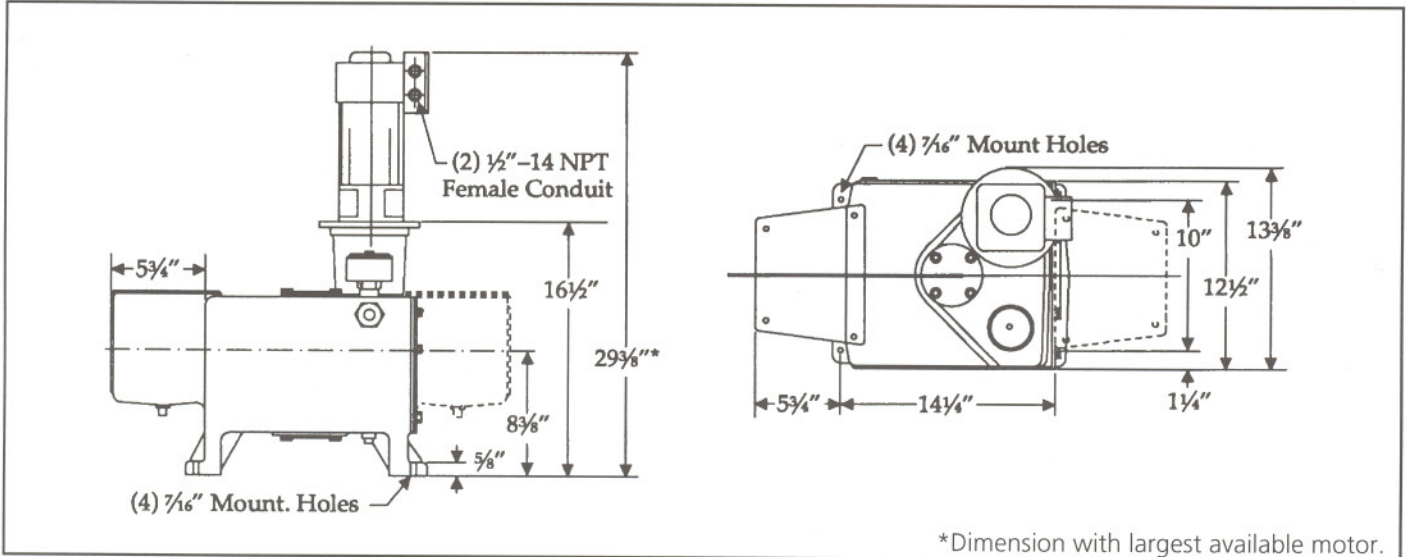




PUMP DIMENSIONS

Dimensions shown are approximate for TENV and are not for construction. Consult Milton Roy for exact engineering dimensions.

Drive



*Dimension with largest available motor.

Liquid End

Plgr. Dia.	A	B	C	D
Metallic				
1"	5 7/32"	5 7/32"	7"	1/2"
1 1/4"	5 7/32"	5 7/32"	7"	1/2"
1 1/2"	7 1/16"	7 1/16"	8 1/4"	1"
2"	7 9/16"	7 9/16"	8 1/4"	1"
2 1/2"	7 9/16"	7 9/16"	8 1/4"	1"
3 1/2"	10 1/8"	10 1/8"	13"	1 1/2"
Plastic				
1"	6 1/2"	6 1/2"	6 15/16"	1/2"
1 1/4"	6 1/2"	6 1/2"	6 15/16"	1/2"
1 1/2"	9 9/16"	9 9/16"	8 3/4"	1"
2"	9 9/16"	9 9/16"	8 3/4"	1"
2 1/2"	9 9/16"	9 9/16"	8 3/4"	1"
3 1/2"	15 7/8"	13 3/8"	13 1/4"	1 1/2"

NOTE:
Plastic liquid end has vertical suction and discharge connections.

Base (Envelope)

Plunger Size & Configuration	A	B	C
1" & 1 1/4"	No Base Required		
1 1/2", 2", 2 1/2"	4"	—	—
3 1/2" Simplex	—	36 5/8"	10"
3 1/2" Duplex	—	44 3/8"	10"

HIGH PERFORMANCE DIAPHRAGM (HPD) LIQUID END MATERIALS OF CONSTRUCTION

Materials of Construction	Diaphragm (3)	Diaphragm Head	Port Connection	Ball Seat (4)	Ball Check (4)	Ball Guide
316 SS (1)	PTFE/Elastomer Bond	316 SS	316 SS	316 SS	316 SS	316 SS
Alloy 20 (1)	PTFE/Elastomer Bond	Alloy 20	Alloy 20	Alloy 20	Alloy 20	Alloy 20
Plastic (2)	PTFE/Elastomer Bond	PVC	PVC	PVC (5)	Ceramic (5)	PVC (5)

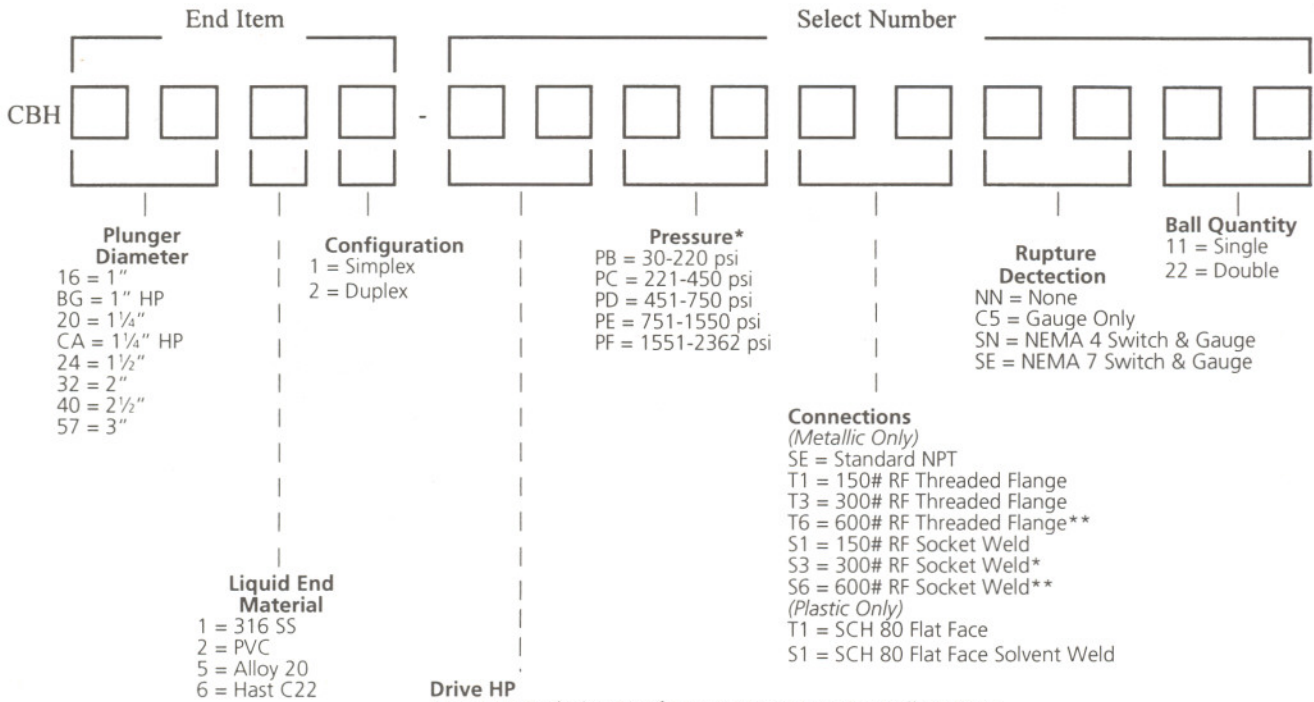
NOTES:

1. Temperature range for metallic versions is 10° to 194°F.
2. Temperature range for plastic versions is 10° to 140°F.
3. Diaphragm isolates displacement chamber and contour plate from process liquid.
4. Special ball check and seat materials are available for severe slurry service. Contact factory.
5. Double ball standard only in plastic liquid ends. Double ball optional on all other liquid ends.



MODEL NOMENCLATURE

Pump Model Code

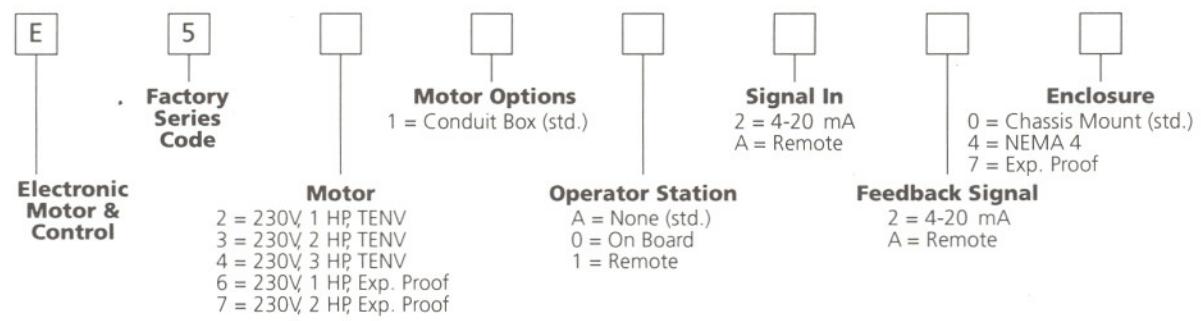


CENTRAC B

* - Not all pressure ranges are available with all plunger sizes. See capacity pressure tables for proper pressure availability
 ** - Not available on 3 1/2" plungers
 *** - Not available on 1 1/2", 2", 2 1/2" and 3 1/2" plungers
 † - Motor mount for standard type motors (AC/DC). 100:1 turndown may not be available with option.

motralec
 4 rue Lavoisier . ZA Lavoisier . 95223 HERBLAY CEDEX
 Tel. : 01.39.97.65.10 / Fax. : 01.39.97.68.48
 Demande de prix / e-mail : service-commercial@motralec.com

Controller & Motor Model Code



Optional Remote Control Station



ACCESSORIES

- Transformers
- Safety Valves
- Back Pressure Valves
- Calibration Columns
- Pulsation Dampeners
- Tanks & Standard Systems
- Mixers
- Sludge Traps
- Dissolving Baskets

All information contained herein is subject to change without notice.

